



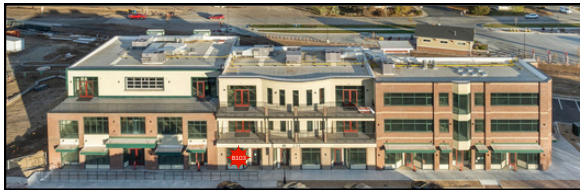
MEAD TOWN CENTER

SUITE B103



SIDEWALK LEVEL 1,176 SF RETAIL STOREFRONT

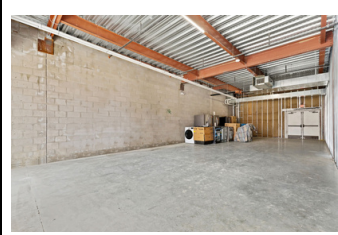
MAIN STREET IN GROWING DOWNTOWN MEAD



CHECK OUT THE VIDEO



TENANT FINISH NEGOTIABLE



WELCOME TO MEAD, COLORADO, AND THE NEW MEAD TOWN CENTER!

NESTLED IN THE HEART OF OUR CHARMING SMALL TOWN, THIS PROPERTY PRESENTS A UNIQUE OPPORTUNITY FOR ANCHOR BUSINESSES READY TO GROW AND BECOME A VITAL PART OF THE THRIVING MEAD COMMUNITY. WHETHER YOU'RE A LOCAL ENTREPRENEUR OR AN ESTABLISHED BRAND LOOKING TO EXPAND, SUITE B103 COULD BE THE PERFECT HOME FOR YOUR BUSINESS DREAMS.

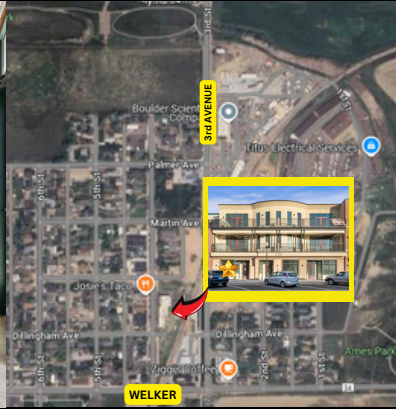
 Abby Renner
970.556.0635
arenner@remax.net

RE/MAX
COMMERCIAL®

LEARN MORE ABOUT THIS PROPERTY
MeadTownCenter.com

 Kurt Finley
303.589.5100
kurtfinley@remax.net

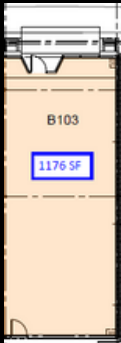
234 MAIN ST., SUITE B103, MEAD CO 80542



PRICING AT \$20.00/SF NNN ESTIMATED AT \$7.00/SF

THIS PRIME RETAIL UNIT IS ON THE MAIN SIDEWALK LEVEL AND OFFERS WONDERFUL FRONT AND BACK ACCESS. THIS SPACE IS A RARE FIND IN THE BUSTLING MEAD. WITH ITS VERSATILE CORE-AND-SHELL DESIGN, EXTENSIVE PARKING AND LIGHT FILLED WINDOWS THIS SPACE IS A BLANK CANVAS FOR YOU TO CREATE THE IDEAL LAYOUT TO SUIT YOUR NEEDS. IMAGINE THE POSSIBILITIES—A MASSAGE THERAPIST/SPA, BOOKSTORE, FITNESS CENTER, GAMING, HOBBY STORE, FLORIST, A SHIPPING SERVICE, OR A BOUTIQUE SPECIALTY STORE TO BRING SOMETHING UNIQUE TO THE AREA.

THIS PROPERTY IS CONVENIENTLY LOCATED MINUTES FROM I-25, OFFERING EASY ACCESS FOR BOTH LOCALS AND VISITORS. IT'S ALSO CLOSE TO SCHOOLS, WALK TO THE PARK, THE TOWN'S NEW COMMUNITY CENTER THAT IS UNDER CONSTRUCTION, AND OTHER KEY COMMUNITY AMENITIES. THIS VIBRANT LOCATION ENSURES STEADY FOOT TRAFFIC AND A SUPPORTIVE COMMUNITY READY TO WELCOME NEW BUSINESSES. JOIN THE HEART OF MEAD AND MAKE SUITE B103 YOUR NEXT BUSINESS VENTURE. THE COMMUNITY IS WAITING FOR YOU, AND THIS SPACE IS READY TO BE TRANSFORMED INTO SOMETHING SPECIAL. LET'S WORK TOGETHER TO BRING YOUR VISION TO LIFE!



**RE/MAX
NEXUS**



LEARN MORE VISIT
MeadTownCenter.com

