



ASHFORD

54 HIGH STREET & 2 NORTH STREET



Prime Retail Location - A1/A3/A5 Use

LOCATION

Ashford is a large town in Kent with a population of approximately 127,500 and c.530,000 economically active people within a 40 minute drive of the town centre. Ashford benefits from excellent road and rail links being close to the M20, and offering a high speed rail link to London in just 38 minutes.

The town is anchored by County Square Shopping Centre where occupiers include many multiple and good quality occupiers including **Specsavers**, **Waterstones**, **The Entertainer** and **Pandora**.

The subject property is located within a prime location on the High Street, opposite **Boots**. Multiple occupiers nearby include **McDonalds**, **Iceland**, **WHSmith** and **Ladbrokes**.

ACCOMMODATION

This Grade II listed property is arranged on ground floor only and is currently presented as two units. The accommodation is available either in current configuration, or alternatively, as one unit. Approximate areas and dimensions are as follows:-

54 High Street - A1 Use

Gross Frontage	4.64 m	15 ft 2 in
Net Frontage	4.32 m	14 ft 2 in
Return Frontage	16.45 m	54 ft
Ground Floor Sales	215.53 sq m	2,320 sq ft
WC		

2 North Street - A3/A5 Use

Gross Frontage	10.75 m	35 ft 3 in
Net Frontage	10.39 m	34 ft 1 in
Ground Floor Sales	88.16 sq m	949 sq ft
WC		

TERMS

Available by way of a new effectively full repairing and insuring lease, for a term of years to be agreed, subject to 5 yearly upward only rent reviews.

54 High Street – £40,000 per annum exclusive

2 North Street – £20,000 per annum exclusive

RATES

54 High Street

Current Rateable Value	£52,500
Rate in the £ (2019/20)	50.4p

2 North Street

Current Rateable Value	£11,500
Rate in the £ (2019/20)	49.1p

Prospective occupiers should make their own enquiries to verify this information.

ENERGY PERFORMANCE CERTIFICATE

An EPC is being commissioned.

LEGAL COSTS

Each party is responsible for their own costs incurred in a transaction.

CONTACT

For further information or to arrange an inspection of the property please contact agents:-

Matt Ritson
01892 707500
07484 022795
mritson@cradick.co.uk

Emma Clarke
01892 707512
07799 604406
eclarke@cradick.co.uk

Joint agent
Rory Gittins
020 7016 5340
rory@primeretailproperty.com

Prime Retail.

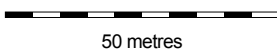
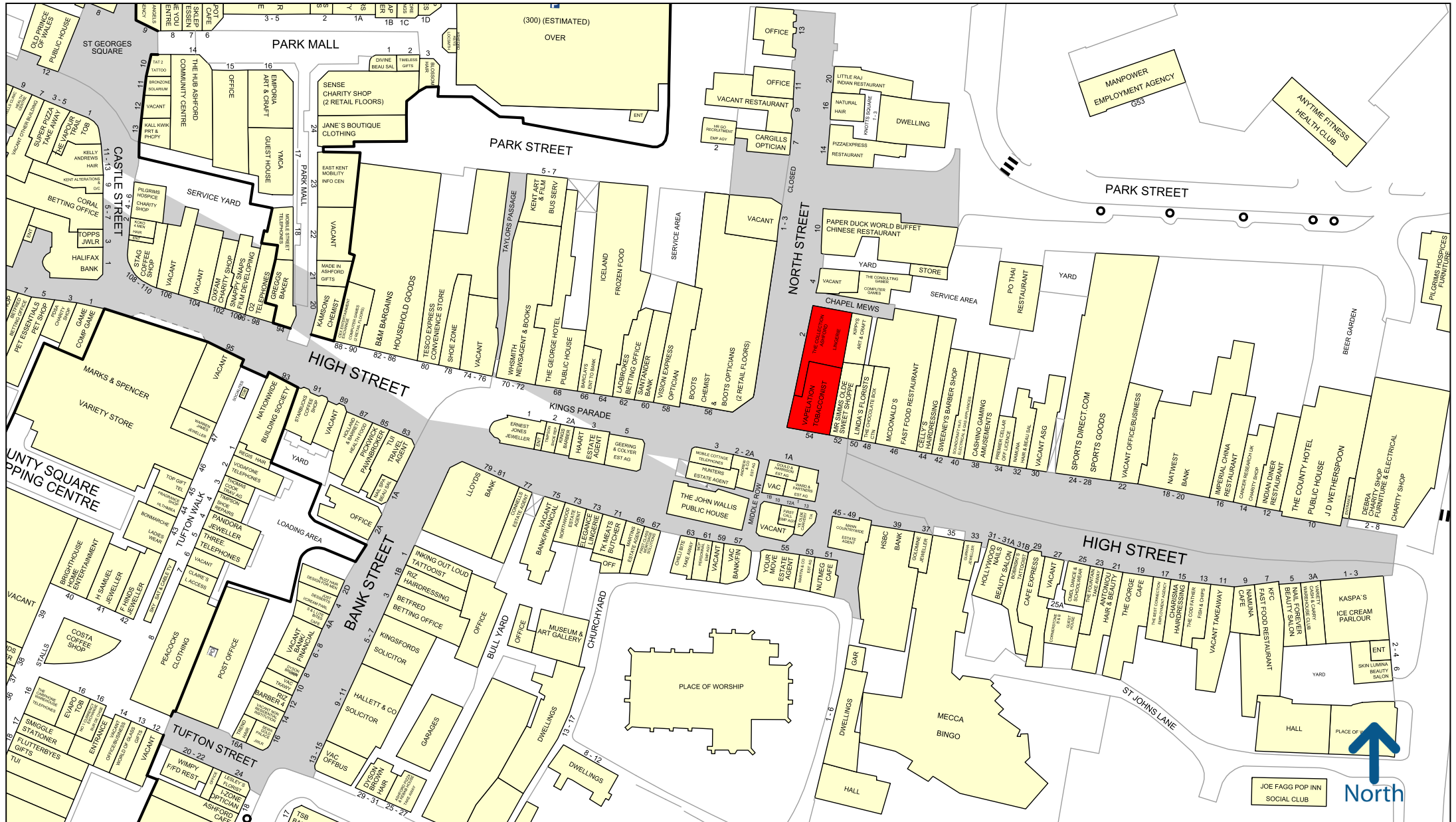
Subject to Contract, Vacant Possession & Exclusive of VAT

www.cradick.co.uk

Longford House, 19 Mount Ephraim Road, Tunbridge Wells, Kent TN1 1EN • 01892 515001
Offices in Tunbridge Wells & Brighton

 @CradickRetail

Cradick Retail LLP for themselves and the vendors of this property whose agents they are give notice that: 1) The particulars are set out as a general outline only for the guidance of intending purchasers or lessees, and do not constitute, nor constitute part of, an offer or contract. 2) All statements contained in these particulars as to this property are made without responsibility on the part of Cradick Retail LLP or the vendor or lessor. 3) All descriptions, dimensions, references to condition and necessary permission for use and occupation, and other details are given in good faith and are believed to be correct, but any intending purchasers or tenants should not rely upon them as statements or representations of fact and must satisfy themselves by inspection or otherwise as to the correctness of each of them. 4) No person in the employment of Cradick Retail LLP has any authority to make or give any representation or warranty whatever in relation to this property. We are fully registered under the Data Protection Act 1998 and personal data is collected, held and processed by us in accordance with the Act. For a full copy of our privacy policy, please refer to our website www.cradick.co.uk.



Experian Goad Plan Created: 29/01/2019
Created By: Cradick Retail



Copyright and confidentiality Experian, 2017. © Crown copyright and database rights 2017. OS 100019885

For more information on our products and services:
www.experian.co.uk/goad | goad.sales@uk.experian.com | 0845 601 6011