

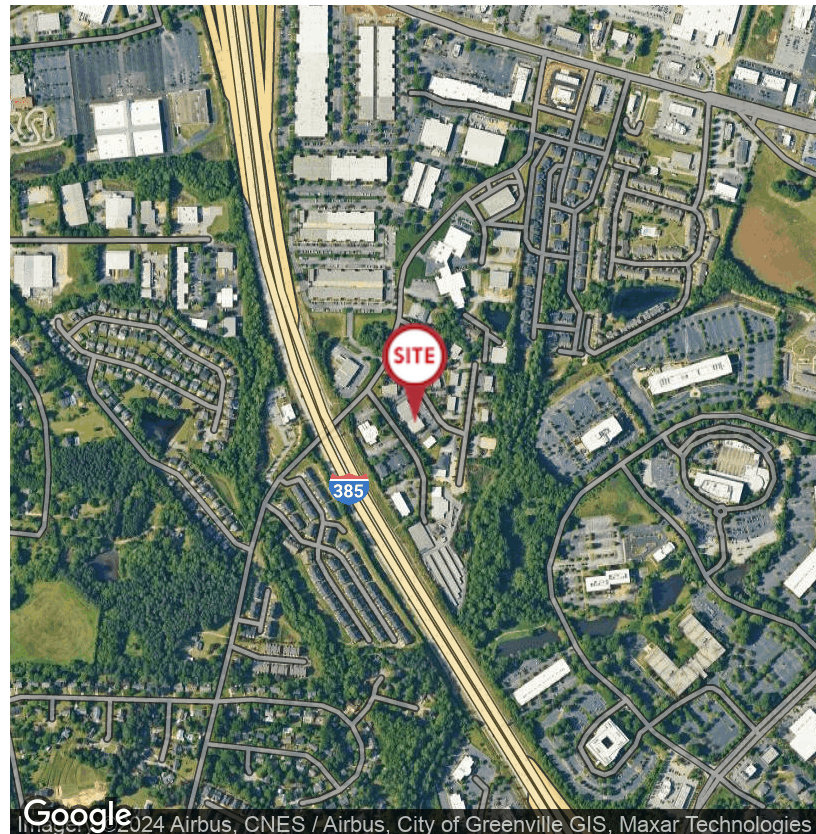
\$10.50 SF/YR (NNN)



Unit B | ±3,200 SF Flex Space

Single-story, stand-alone flex space ready for occupancy. The property is conveniently located 1/2 mile from Woodruff Road's restaurants, banks, big box stores, specialty stores, medical offices, and other retail shopping & only 3/4 of a mile from I-385, allowing easy access to all parts of Upstate SC.

- Unit B has ±3,200 total SF, including ±1,200 SF of office space and ±2,000 SF of warehouse space
- One (1) roll-up door in the rear opening to a loading dock-high platform
- Clear ceiling height is ±14'
- Excellent access to I-385 & I-85
- Ample parking
- Masonry construction
- Built in 2001



Hunter Garrett, CCIM, SIOR
O: +1 864 678 5934
C: +1 864 505 6813
hgarrett@naiearlefurman.com



John Staunton, SIOR
O: +1 864 678 5990
C: +1 864 905 1112
johnstaunton@naiearlefurman.com



Josh Kenyon
O: +1 704 964 2181
jkenyon@naiearlefurman.com



101 E Washington St
Greenville, SC 29601
naiearlefurman.com

8 Progress Road | Greenville SC
Exterior Photos



8 Progress Road | Greenville SC Interior Photos

NAI Earle Furman

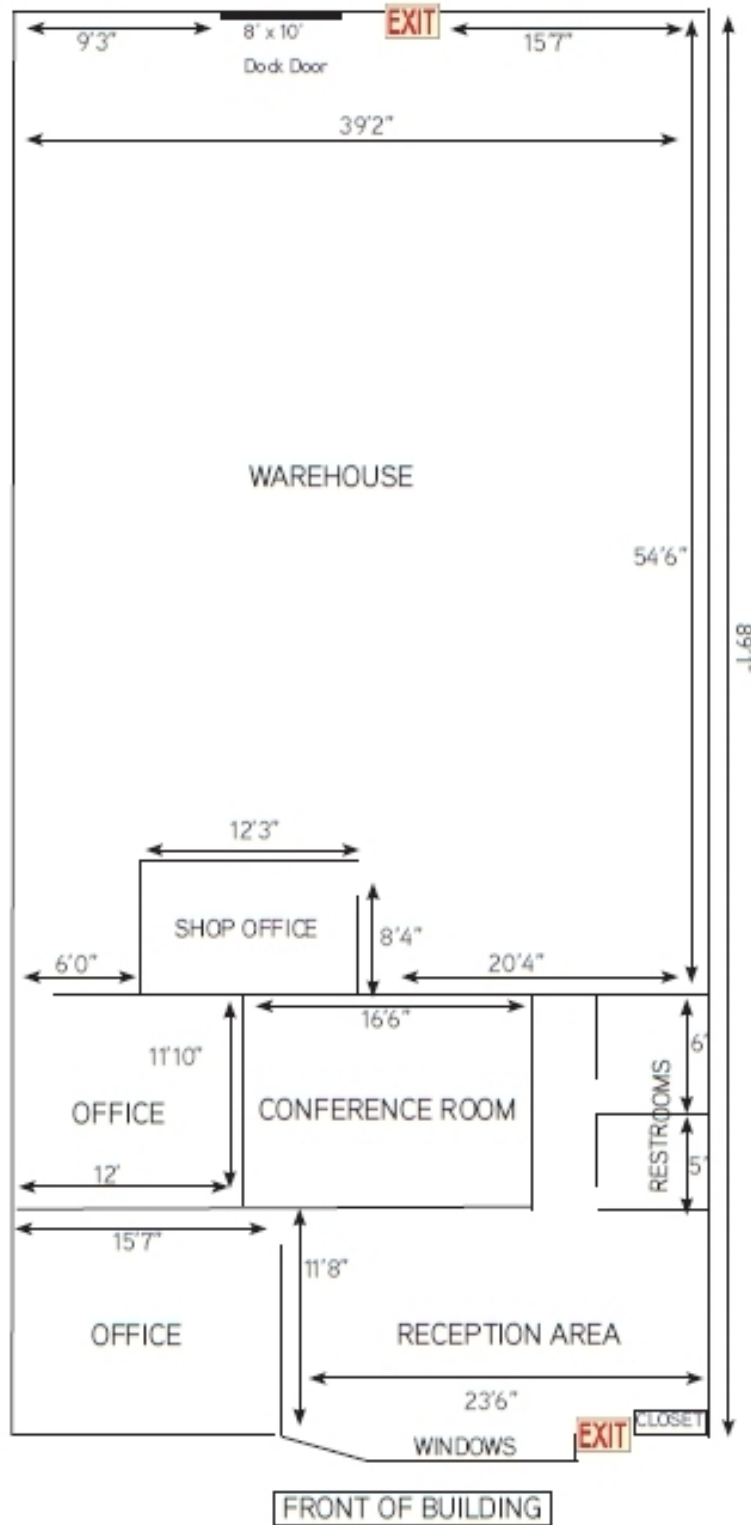


✉ Hunter Garrett, CCIM, SIOR
O: +1 864 678 5934
C: +1 864 505 6813
hgarrett@naiearlefurman.com

✉ John Staunton, SIOR
O: +1 864 678 5990
C: +1 864 905 1112
johnstaunton@naiearlefurman.com

✉ Josh Kenyon
O: +1 704 964 2181
jkenyon@naiearlefurman.com

📍 101 E Washington St
Greenville, SC 29601
naiearlefurman.com



UNIT B