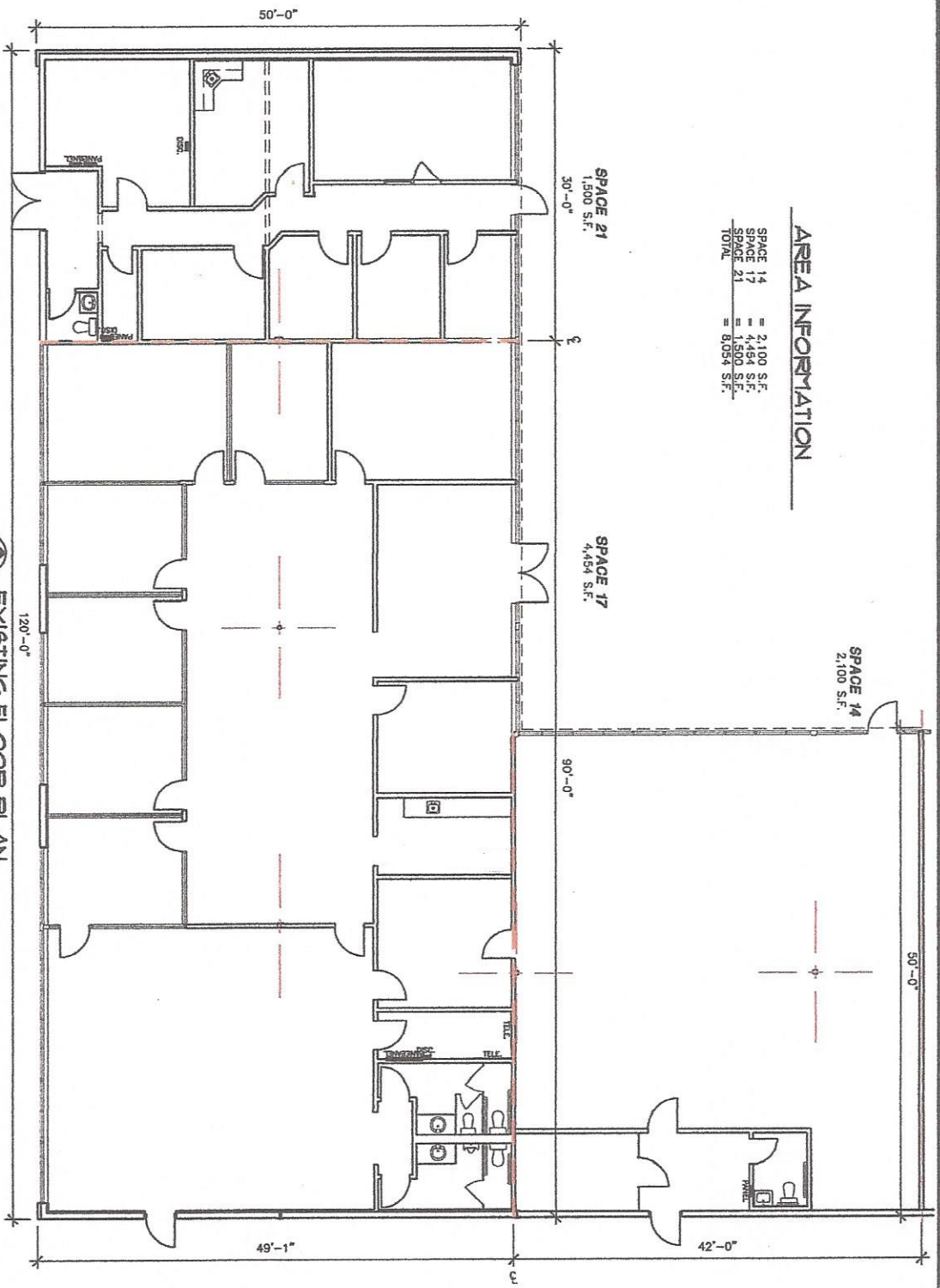


AREA INFORMATION

SPACE 14	=	2,100 S.F.
SPACE 17	=	4,454 S.F.
SPACE 21	=	1,500 S.F.
TOTAL	=	8,054 S.F.



NOT FOR REGULATORY APPROVAL, PERMITTING, OR CONSTRUCTION. REFER: TIPPIT, ARCHITECT #21899.



EXISTING FLOOR PLAN

SCALE: 3/32" = 1'-0"

Askins & Associates, Inc.
 8008 Slide Road, Suite 378
 Lubbock, Texas 79424
 Office (806) 771-9637
 Mobile (806) 789-2691
 Fax (806) 771-9179

Trinity's Center
 2811 S. Loop 289, Suites 14, 17, & 21
 Lubbock, Texas 79423

Date: 04/24/2018
 Drawn by: JMT
 Checked by:
 Rev:

TIPPIT CADD Services
 P.O. Box 9715
 Idalou, Texas 79329
 jef@tippitcaddservices.com

Area:
A1