

# Office for Lease



2000 Maxwell Drive, Hudson WI  
up to 2,736 square feet



715.441.2804

# 2000 Maxwell Drive, Hudson WI

This *new construction* in Hudson is situated just north of the redevelopment St. Croix Meadows park, where a variety of commercial and residential will be built. Up to 2,736 SF is available for commercial use; perfect for professional office, retail, or medical tenant. Currently a shell, the space can be built to tenant specs or tenant make take as is. Availability of men and women's restrooms along with adjacent kitchen area may be worked into the lease. Call today for a tour!

Up to 2,736 total SF  
Built in 2019  
Ample parking  
City water & sewer

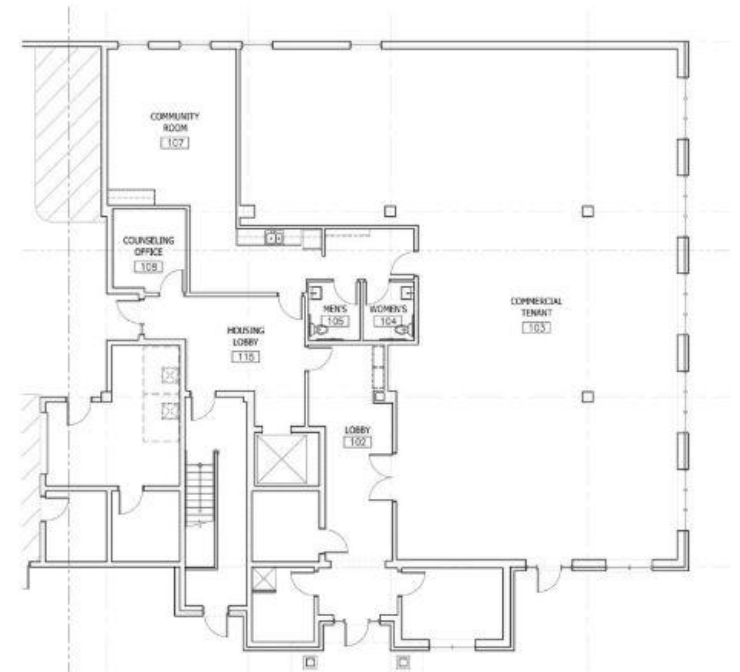
Rate: \$16/SF NNN  
Immediate availability  
5 Year minimum lease  
Low CAM/Taxes

[KunzProperties.com](http://KunzProperties.com)

\*Information deemed reliable but not guaranteed



# Floor Plan



Jeanette Kunz

WI & MN Licensed

715 441 2804

[jeanette@lakesarearealty.com](mailto:jeanette@lakesarearealty.com)

1600 Maxwell Drive, Hudson WI