



Sale Price: \$699,000 (\$58.25)/SF | Lease Rate: \$0.78/SF/Month

833 E. March Lane

Stockton, CA 95205

Property Features:

Contact Us

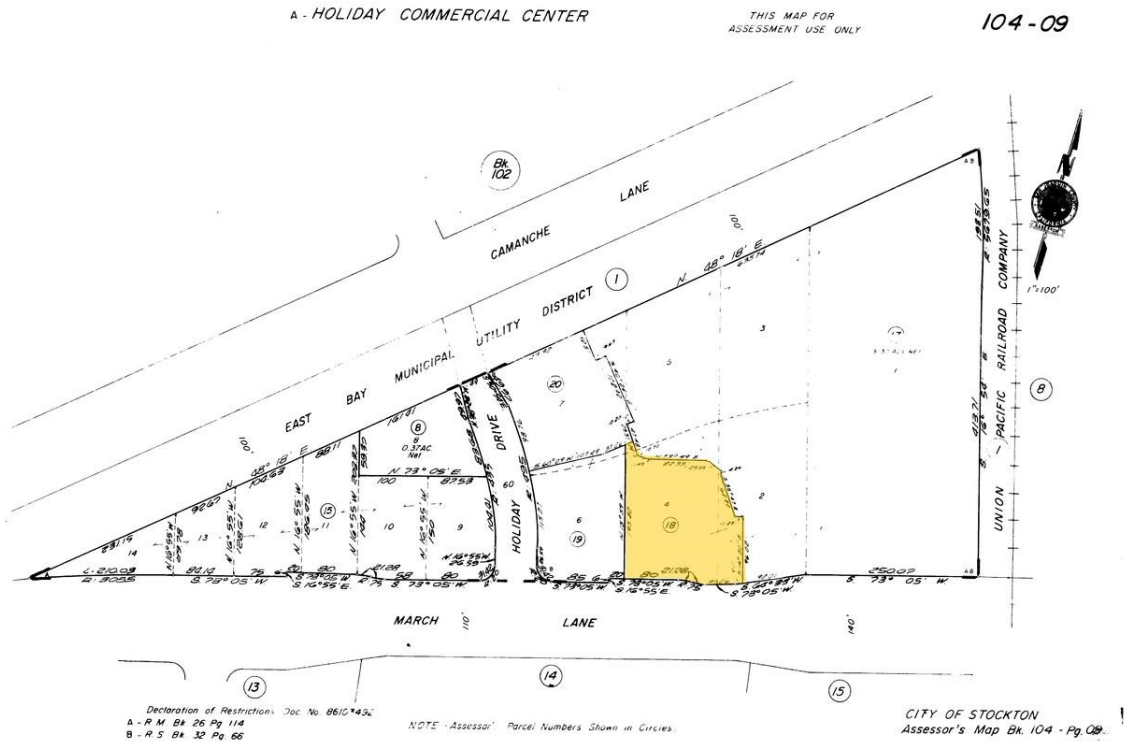
Ruben Sandoval
Vice President
+ 1 209 918 1536
ruben@naibenchmark.com
BRE# 01806675

Colton Toste
Associate
+ 1 209 461 6400
colton@naibenchmark.com
BRE# 01993261

- **6,000± SF - 12,000± SF available now**
- Grade level roll-up door accessible from parking lot
- Flexible space; can serve multiple uses
- Excellent owner/user or value-add opportunity
- Frontage and Access from March Ln with Daily traffic counts in Excess of 27,600+
- Site is surrounded by Numerous National Major Retailers
- Site is surrounded by Dense Residential Neighborhoods Including Numerous Apartment Complexes, Schools, Medical Centers, and Single Family Homes



Parcel Map



Demographics

	1 Mi	3 Mi
Population	25,375	165,736
Households	8,139	54,601
Average Age	34.00	35.40
Median HH Income	\$37,926	\$40,922
Daytime Employees	6,090	59,111

Population Growth '17-'22

4.8%



4.9%



Household Growth '17-'22

4.9%



5.0%



