



## **32500 Van Born Rd**

32500 Van Born Rd, Wayne, MI 48184

### **Peter Shin**

New Century And Beyond  
38275 W Twelve Mile Rd, Farmington Hills, MI 48331  
[peter@newtrendhomes.com](mailto:peter@newtrendhomes.com)  
(248) 553-5050

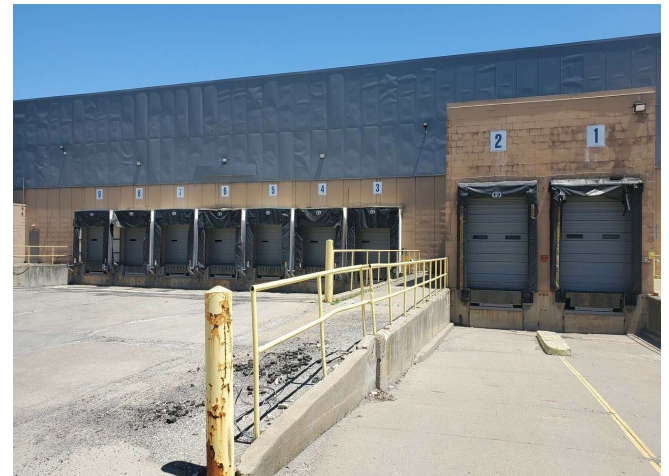


# 32500 Van Born Rd

\$7.00 /SF/YR

Prime 60,000 SF warehouse and 10,000sS/F office. Strategically located just minutes from Detroit Metropolitan Wayne County Airport. this freestanding industrial warehouse is designed for high-efficiency operations. Features a spacious height of 26' in high bay and 17' low bay allowing for maximum pallet racking capacity, paired with an excellent loading configuration including 9 dock-high doors with 9 levelers. The building offers a single 13,200 VAC primary, Qty-3 Sub-Station, 480/220 VAC throughout. Fully Wet-sprinklered interior. 10,000 S/ office space available, generous truck-trailer maneuvering, and ample dedicated employee parking. Perfect for regional distribution, e-commerce fulfillment, or light manufacturing. Contact us today to schedule a private tour....

- • 32500 Van Born Rd is a multi-tenant industrial warehouse equipped with 2 drive-ins, 9 loading docks, 9 levelers, and a 26' high bay and 17' low bay.
- • Parking space: 15 tractors and 20 trailers available for the specific area.
- • Rent included CAM: gross/ full service



Rental Rate: \$7.00 /SF/YR

Property Type: Industrial

Property Subtype: Warehouse

Rentable Building Area: 70,000SF

Year Built: 1968

Rental Rate Mo: \$0.58 /SF/MO

## 1st Floor

1

Space Available	60,000 SF
Rental Rate	\$7.00 /SF/YR
Contiguous Area	70,000 SF
Date Available	Now
Service Type	Full Service
Office Size	800 SF
Space Type	Relet
Space Use	Warehouse
Lease Term	2 - 20 Years

## 1st Floor

2

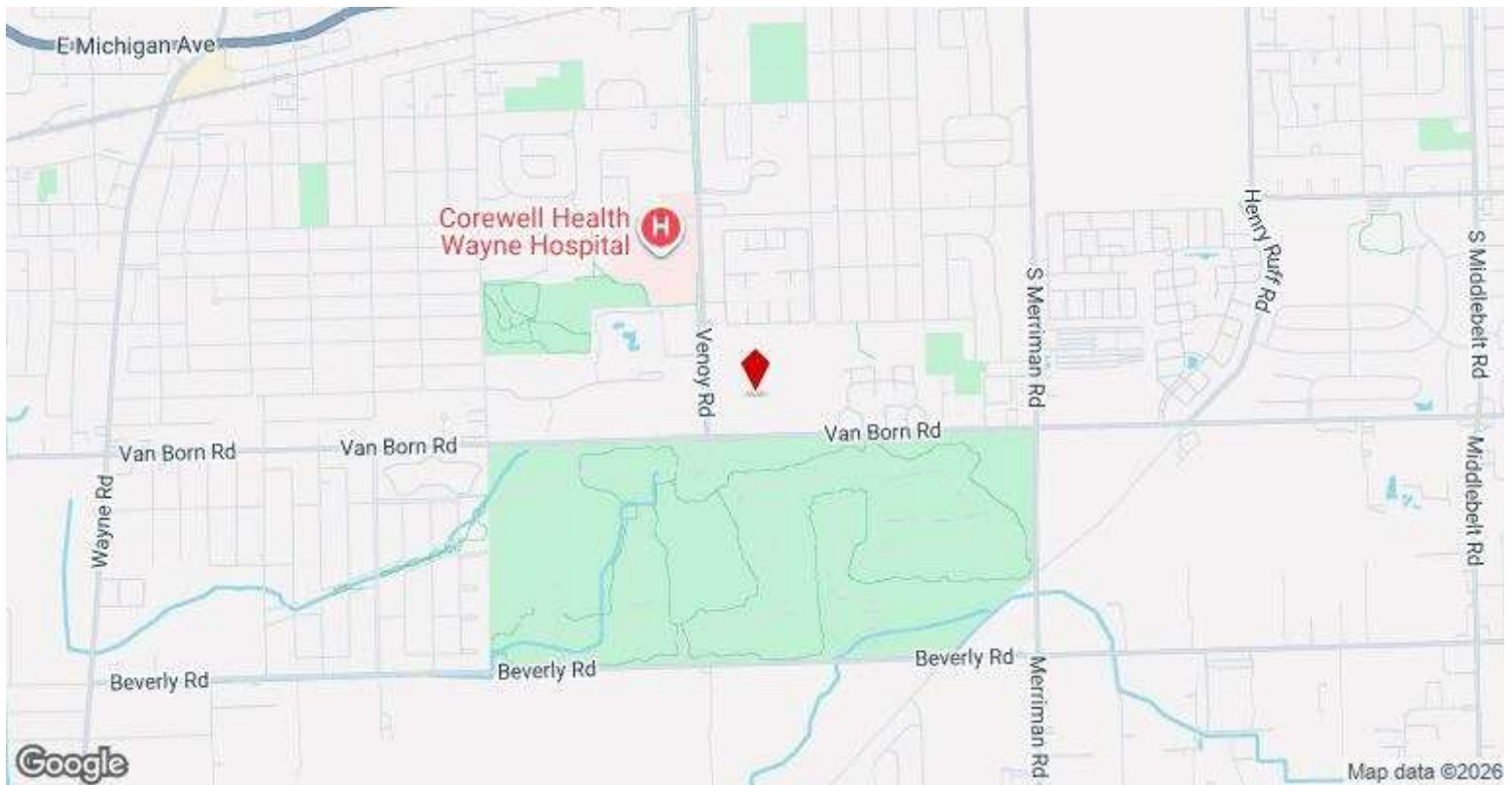
Space Available	10,000 SF
Rental Rate	\$7.00 /SF/YR
Contiguous Area	70,000 SF
Date Available	Now
Service Type	Full Service
Built Out As	Standard Office
Space Type	Relet
Space Use	Office
Lease Term	2 - 20 Years

---

## Major Tenant Information

---

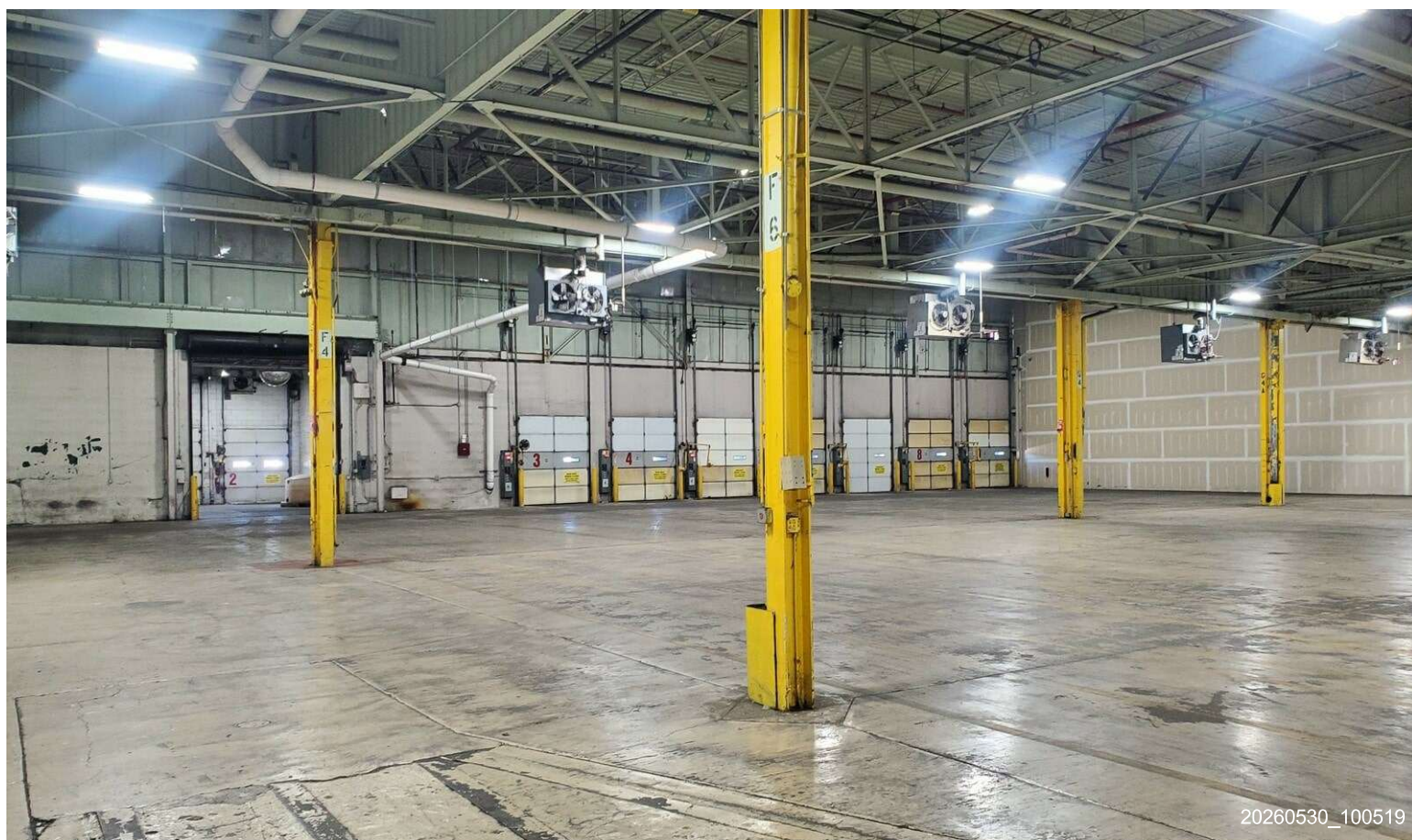
<b>Tenant</b>	<b>SF Occupied</b>	<b>Lease Expired</b>
Corrigan Air & Sea	-	
Federated Logistics LLC	-	
Gsa International LTD	-	January 2013
Gulf Midwest Packaging, Inc	-	
L&M Express LLC	-	November 2023
The United States Postal Service	-	
Wooshin North America, Inc	-	



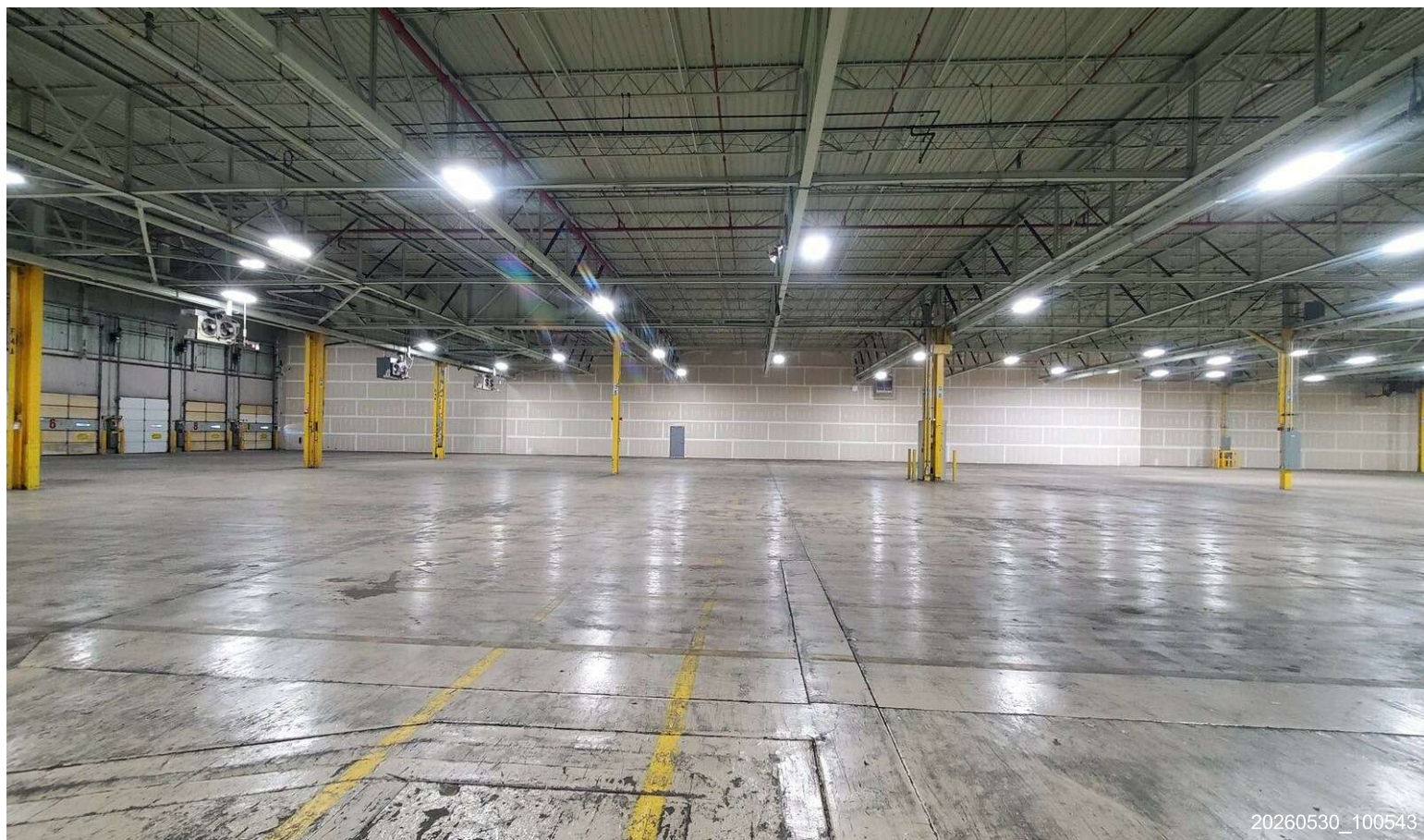
## 32500 Van Born Rd, Wayne, MI 48184

Prime 60,000 SF warehouse and 10,000sS/F office. Strategically located just minutes from Detroit Metropolitan Wayne County Airport, this freestanding industrial warehouse is designed for high-efficiency operations. Features a spacious height of 26' in high bay and 17' low bay allowing for maximum pallet racking capacity, paired with an excellent loading configuration including 9 dock-high doors with 9 levelers. The building offers a single 13,200 VAC primary, Qty-3 Sub-Station, 480/220 VAC throughout. Fully Wet-sprinklered interior. 10,000 S/ office space available, generous truck-trailer maneuvering, and ample dedicated employee parking. Perfect for regional distribution, e-commerce fulfillment, or light manufacturing. Contact us today to schedule a private tour.

# Property Photos



20260530\_100519



20260530\_100543

# Property Photos



Building Photo

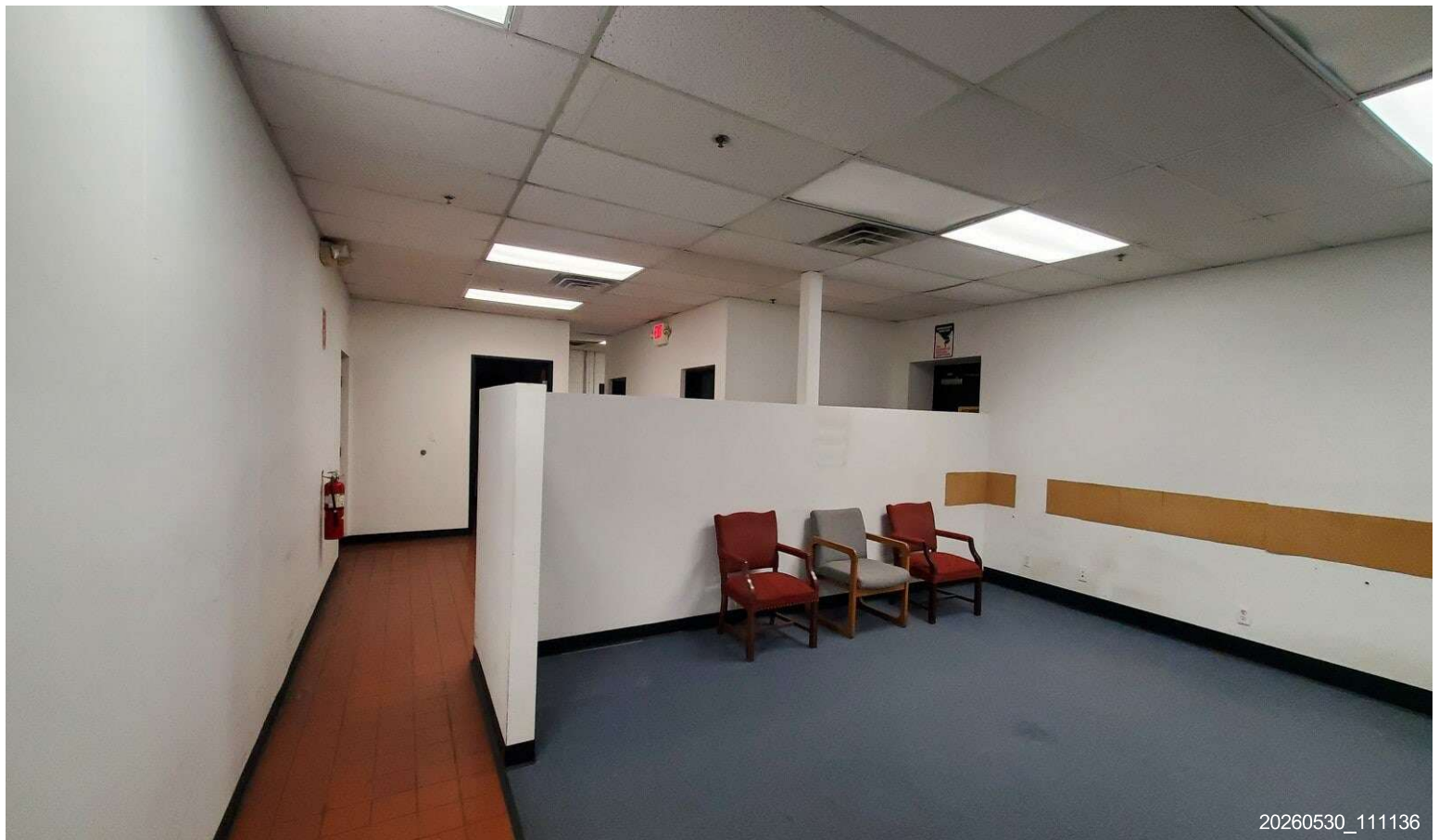


20260530\_111027

# Property Photos



20260530\_111055



20260530\_111136

# Property Photos

