

**LEASE**

# 910 Eastern Shore Drive

**910 EASTERN SHORE DRIVE**

Salisbury, MD 21801

**PRESENTED BY:**

**CHRIS PEEK, CCIM**

O: 410.603.9112

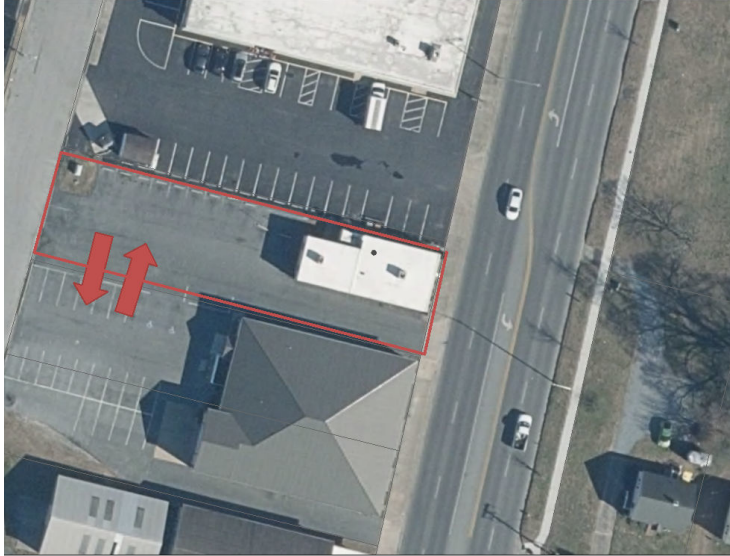
chris.peek@svn.com

MD #4155894



# PROPERTY SUMMARY

RLIN Maryland's Environmental Resources and Land Information Net

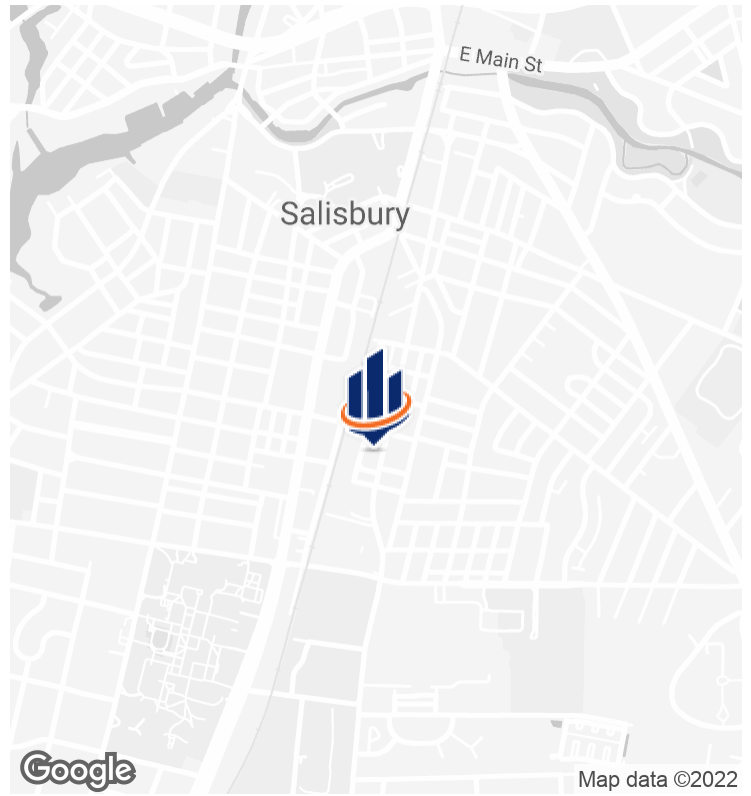


Green: Band\_2  
Blue: Band\_3



MD IMAF  
GeoTechnx  
IMAF, ESP

USGS, EPA, USDA | MD IMAF | MD IMAF, DoIT | MD IMAF, USDA | MD IMAF, USGS | MD IMAF, COMMERCE, DHCD, MDP, MHT, MDOT, MDOT SHA, USDOT, FHWA, DoIT | MD IMAF, MDP, MHT | MD IMAF



## OFFERING SUMMARY

**LEASE RATE:** \$1,900.00 per month (MG)

**BUILDING SIZE:** 1,900 SF

**AVAILABLE SF:** 1,900 SF

**LOT SIZE:**

**MARKET:** Eastern Shore

**SUBMARKET:** Salisbury MD

## PROPERTY OVERVIEW

Centrally located professional medical office.  
Excellent Condition!

Space layout includes a foyer, patient waiting area, reception office, 4 private offices, 3 exam rooms, and a kitchen area.

Zoning is C-1 General Commercial

## PROPERTY HIGHLIGHTS

### CHRIS PEEK, CCIM

O: 410.603.9112

chris.peek@svn.com

MD #4155894



## ADDITIONAL PHOTOS



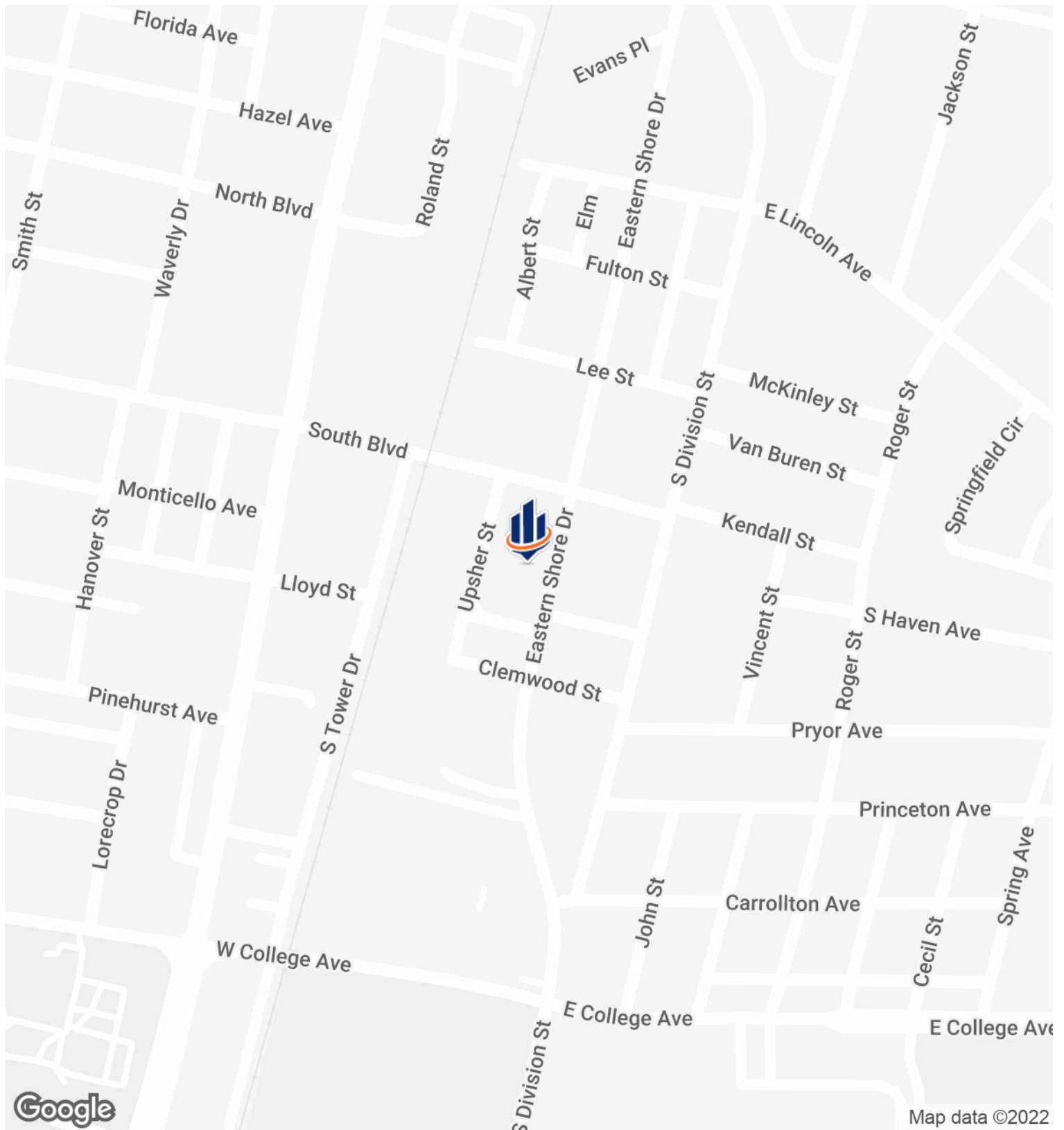
**CHRIS PEEK, CCIM**

O: 410.603.9112

chris.peek@svn.com

MD #4155894

# LOCATION MAP



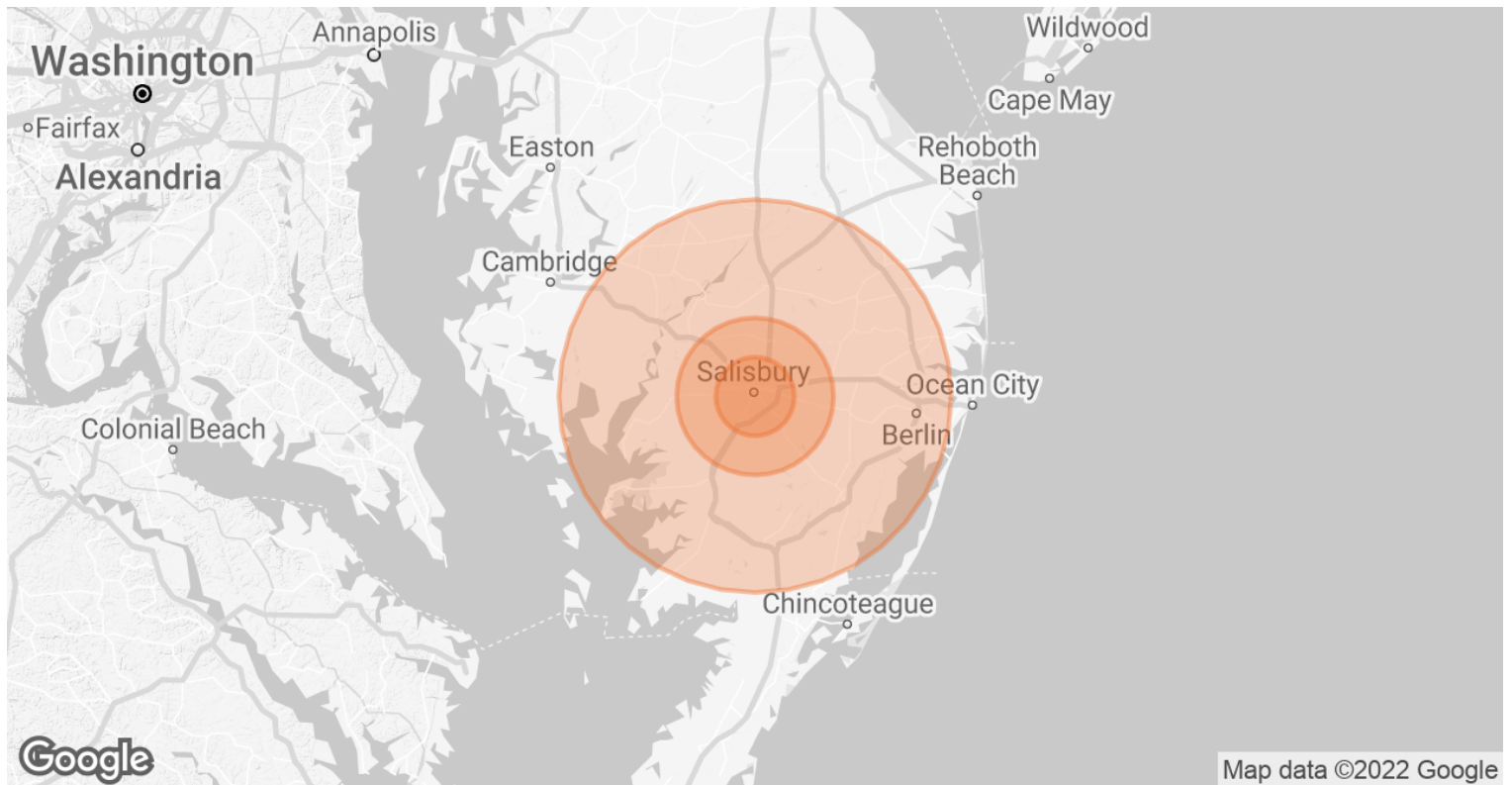
**CHRIS PEEK, CCIM**

O: 410.603.9112

chris.peek@svn.com

MD #4155894

# DEMOGRAPHICS MAP & REPORT



<b>POPULATION</b>	<b>5 MILES</b>	<b>10 MILES</b>	<b>25 MILES</b>
<b>TOTAL POPULATION</b>	69,881	98,939	241,819
<b>AVERAGE AGE</b>	35.6	37.3	40.9
<b>AVERAGE AGE (MALE)</b>	35.1	36.5	40.0
<b>AVERAGE AGE (FEMALE)</b>	36.4	38.3	41.9
<b>HOUSEHOLDS &amp; INCOME</b>	<b>5 MILES</b>	<b>10 MILES</b>	<b>25 MILES</b>
<b>TOTAL HOUSEHOLDS</b>	28,524	40,672	105,172
<b># OF PERSONS PER HH</b>	2.4	2.4	2.3
<b>AVERAGE HH INCOME</b>	\$67,259	\$68,184	\$64,243
<b>AVERAGE HOUSE VALUE</b>	\$163,067	\$173,013	\$195,546

*\* Demographic data derived from 2020 ACS - US Census*

## CHRIS PEEK, CCIM

O: 410.603.9112  
 chris.peek@svn.com  
 MD #4155894

## ADVISOR BIO 1



### CHRIS PEEK, CCIM

Advisor

chris.peek@svn.com

**Direct:** 410.603.9112 | **Cell:** 410.603.9112

MD #4155894

### PROFESSIONAL BACKGROUND

Christian Peek serves as a Senior Advisor for SVN-Miller Commercial Real Estate specializing in the sale and lease of land and industrial property in the Delmarva Peninsula; the region incorporating the inland and coastal regions of Delaware, Maryland and Virginia. With over 24 years in the real estate industry, Peek has secured over 1000 transactions resulting in a career brokerage volume in excess of \$600 million.

Active in the commercial real estate industry, Peek earned the prestigious Certified Commercial Investment Member designation in 1989 and has written several articles on developing and investing.

Peek earned a Bachelor of Science in Sociology and Mathematics from the University of Maryland College Park. Peek is also a member of the Salisbury Chamber of Commerce, the Salisbury Wicomico Development Commission and the Salisbury Rotary Club..

#### SVN | Miller Commercial Real Estate

206 E. Main Street  
Salisbury, MD 21801  
410.543.2440

### CHRIS PEEK, CCIM

O: 410.603.9112

chris.peek@svn.com

MD #4155894