

Industrial | For Lease



5250

Solar Drive

Unit 27

Mississauga, ON

NEW INDUSTRIAL CONDOS!

1980 SQ.FT



# Property Details



## Features

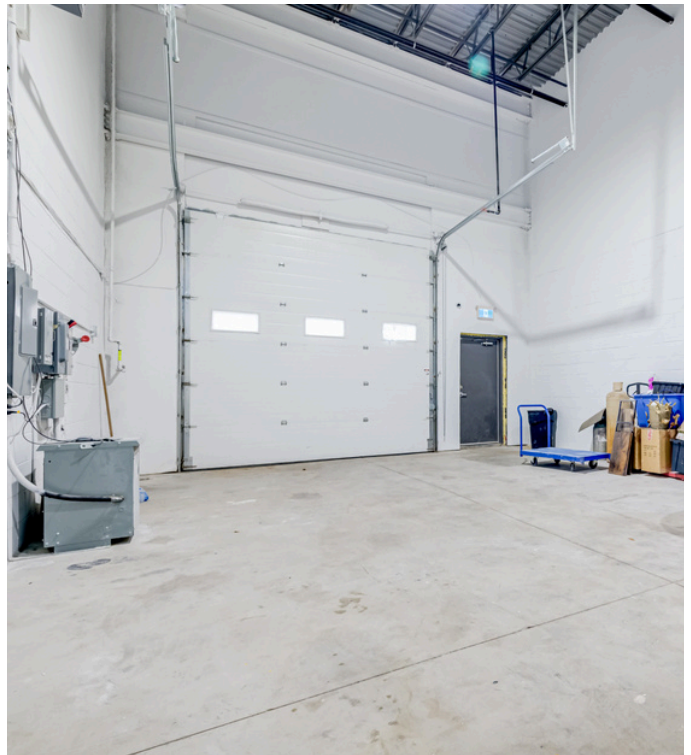
<b>ADDRESS</b>	5250 SOLAR DRIVE UNIT 27
<b>PRICE</b>	\$27
<b>OCCUPANCY</b>	TBD
<b>T.M.I</b>	\$7.50
<b>LOADING DOOR</b>	1 Drive-in
<b>HEATING + COOLING</b>	HVAC - 6 Tones
<b>ZONING</b>	E1
<b>POWER</b>	600 AMPS

- New industrial condo units
- 27' ceilings
- Just minutes away from Highways 401, 410, 427 &
- Pearson Airport
- Easy access to public transportation/labov
- Located in Airport Corporate Centre, highly soughtafter
- node of Mississauga
- E1 zoning permits wide variety of employment uses
- Tons of amenities nearby
- Ready for possession
- All permits have been closed by city
- Bathroom compelled.

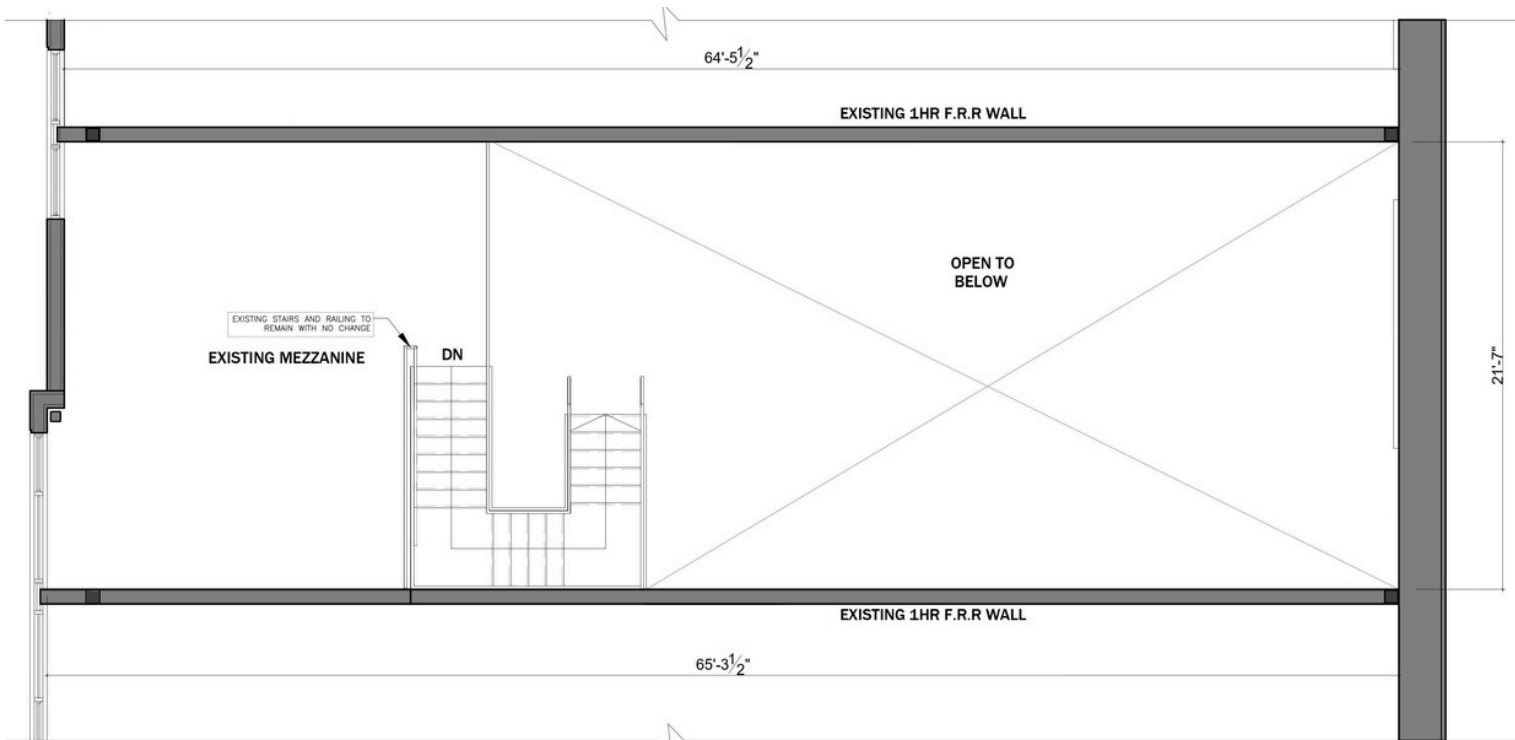
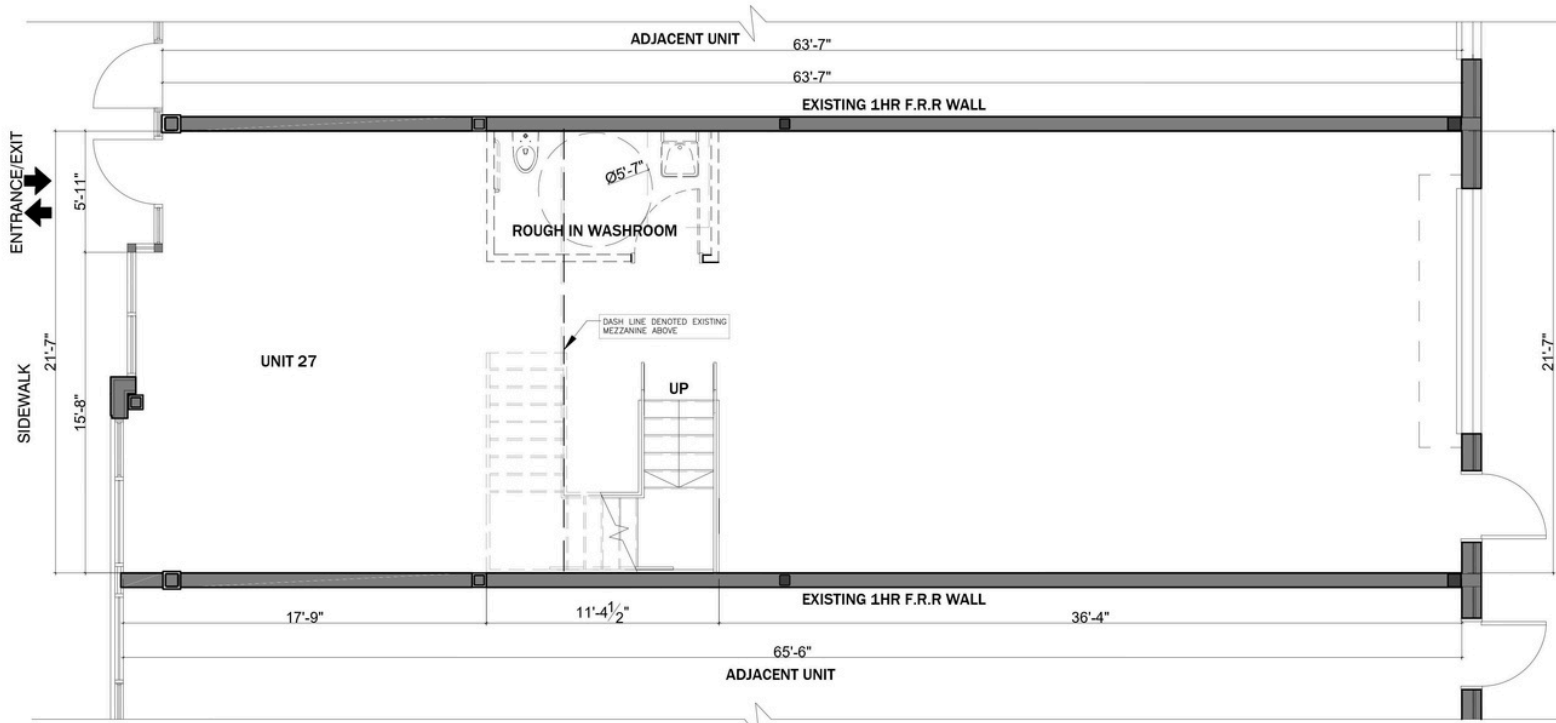
# Property Photos



# Property Photos



# Property Layout



# Amenities



## E1 ZONING

### PERMITTED USES

#### OFFICE

- Medical Office
- Office

#### BUSINESS ACTIVITIES

- Manufacturing Facility
- Science and Technology Facility
- Warehouse/Distribution Facility

#### COMMERCIAL

- Commercial School
- Financial Institution
- Veterinary Clinic

#### HOSPITALITY

- Overnight Accommodation

#### OTHER

- Active Recreational Use
- Recreational Establishment
- University/College
- Courier/Messenger Service.

And many others.

## Hassan Javeed

Commercial Sales Representative



647-917-2942  
905-812-8123



hassanjaveed@kw.com



7145 West Credit Ave Building 1  
Suite 100 Mississauga, ON L5N 6J7