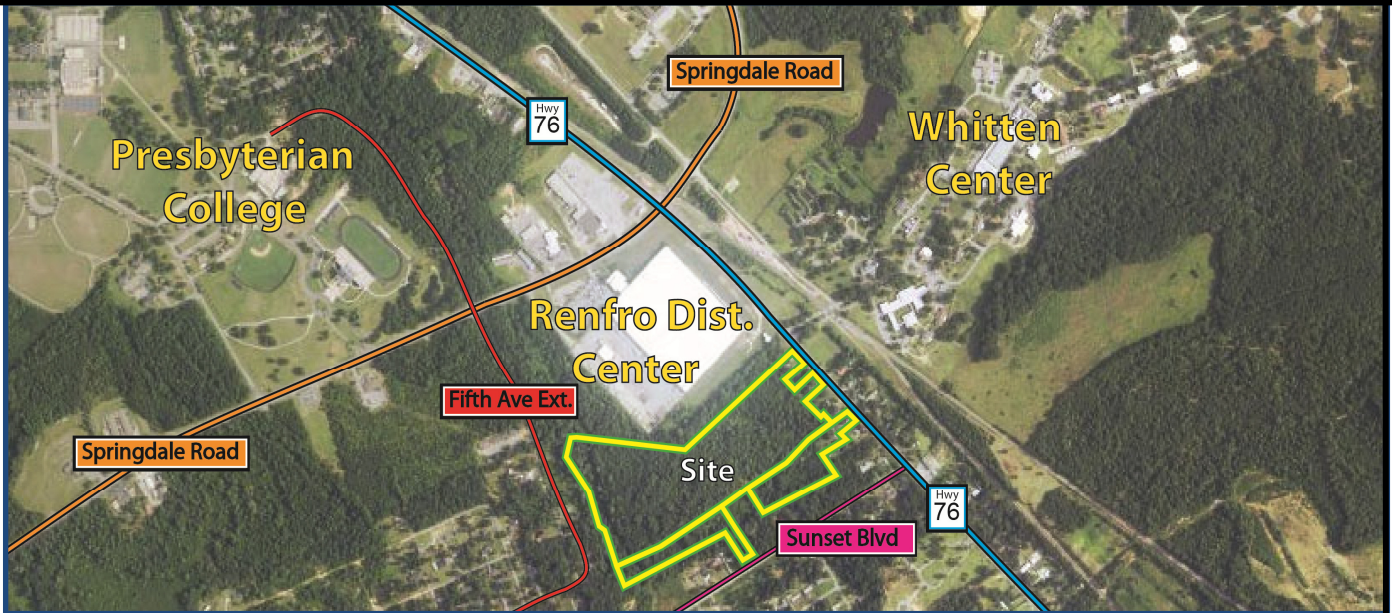


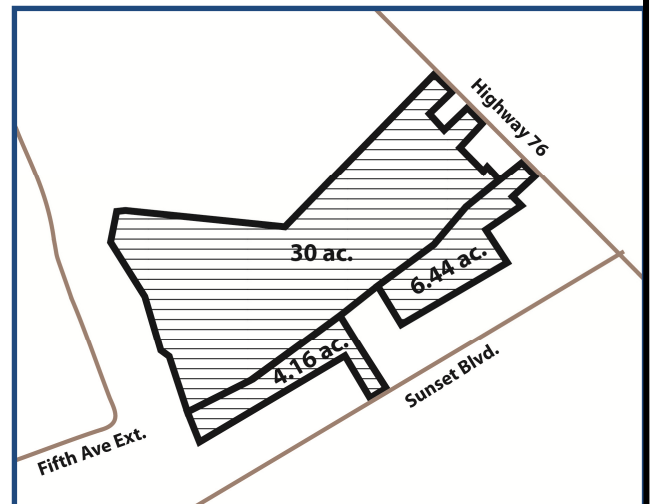
# Available

**+/- 40 Acres (water and sewer on site)**  
**State Highway 76**  
**Clinton, S.C.**  
**Laurens County**



**For Sale: \$225,000.00 or Build-To-Suit (will Develop)**

- +/- 40 acres
- Water and Sewer on site!
- Adjacent to the Presbyterian College Campus & the Renfro Distribution Facility.
- Frontage on Hwy 76
- Access also from Sunset Blvd (side) and Fifth Avenue Ext (rear)
- Great Hwy / street access and visibility  
(Co-Owner / Broker)



**GRB | JG Capital Properties, LLC**  
Real Estate Services  
P.O. Box 25986, Greenville, SC 29616

**Contact: Jimmy Grumbos**  
**Office: (864) 232-5544**  
**Mobile: (864) 230-8303**

The information above has been obtained from sources believed reliable. While we do not doubt its accuracy, we have not verified it and make no guarantee, warranty, or representation about it. It is your responsibility to independently confirm its accuracy.



**+/- 40 acres (For Sale \$225,000.00)**

**Water and Sewer available on Site!!**

**Frontage on Hwy 76 (with access to Sunset Blvd (side) and Fifth Avenue (rear))**

**Laurens County, Clinton, S.C.**

**GRB | JG Capital Properties, LLC**

**Real Estate Services**

**P.O. Box 25986, Greenville, SC 29616**

**Contact: Jimmy Grumbos**

**Office: (864) 232-5544**

**Mobile: (864) 230-8303**

The information above has been obtained from sources believed reliable. While we do not doubt its accuracy, we have not verified it and make no guarantee, warranty, or representation about it. It is your responsibility to independently confirm its accuracy.