

MILITARY CUTOFF OFFICE SUITE

1442 MILITARY CUTOFF RD | WILMINGTON, NC 28403



PROPERTY DESCRIPTION

Top Notch Location with signage on Military Cutoff Rd. 2nd floor office space for lease located on Military Cutoff in the Medac building, just south of Eastwood Rd. and a stone's throw from Wrightsville Beach. The building has a modern design with a clean coastal interior and features meticulously maintained common areas including restrooms, kitchen/break room, and an inviting mezzanine. Expansive windows extend across the entire perimeter giving nearly every office a fantastic ambiance of quality, to attract the brightest employees and impress visiting clients. A total of 7 perimeter spaces feature wall to wall glass, plus an interior space and ample storage. There is also illuminated signage on heavily traveled Military Cutoff Rd. Landlord covers taxes, insurance, and common area maintenance.

OFFERING SUMMARY

Lease Rate:	\$3,875 per month (MG)
Suite 30 SF:	1860SF
Floor:	2nd (no elevator)
Lease Type:	Modified Gross
Building Size:	12,900 SF

DEMOGRAPHICS	1 MILE	3 MILES	5 MILES
Total Households	1,792	17,174	47,453
Total Population	3,366	31,288	99,581
Average HH Income	\$113,815	\$82,420	\$76,532



KENNETH FISHER - RE/MAX COMMERCIAL
Each office independently owned and operated

KENNETH FISHER
Broker / REALTOR
910.616.2123
kfisher@beachtownbrokers.com
NC #227264

1650 Military Cutoff Rd | Ste 100
Wilmington, NC 28403

FOR LEASE

SUITE 30

SUITE 30

MILITARY CUTOFF OFFICE SUITE

1442 MILITARY CUTOFF RD | WILMINGTON, NC 28403



KENNETH FISHER - RE/MAX COMMERCIAL
Each office independently owned and operated

KENNETH FISHER
Broker / REALTOR
910.616.2123
kfisher@beachtownbrokers.com
NC #227264

1650 Military Cutoff Rd | Ste 100
Wilmington, NC 28403

All information contained herein is deemed reliable but not guaranteed. Each office independently owned and operated

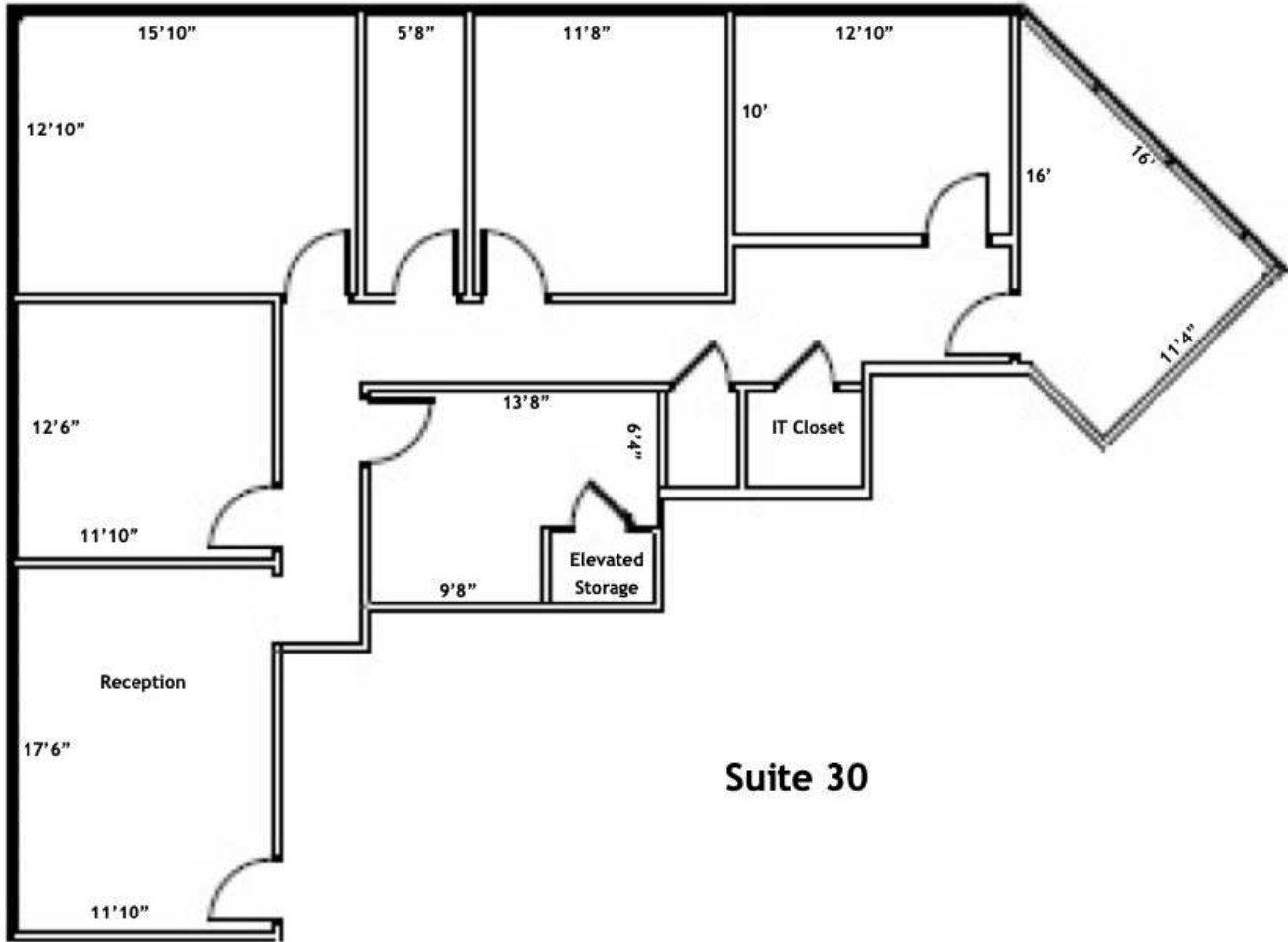
FOR LEASE

SUITE 30

SUITE 30

MILITARY CUTOFF OFFICE SUITE

1442 MILITARY CUTOFF RD | WILMINGTON, NC 28403



Suite 30



KENNETH FISHER - RE/MAX COMMERCIAL
Each office independently owned and operated

KENNETH FISHER

Broker / REALTOR

910.616.2123

kfisher@beachtownbrokers.com

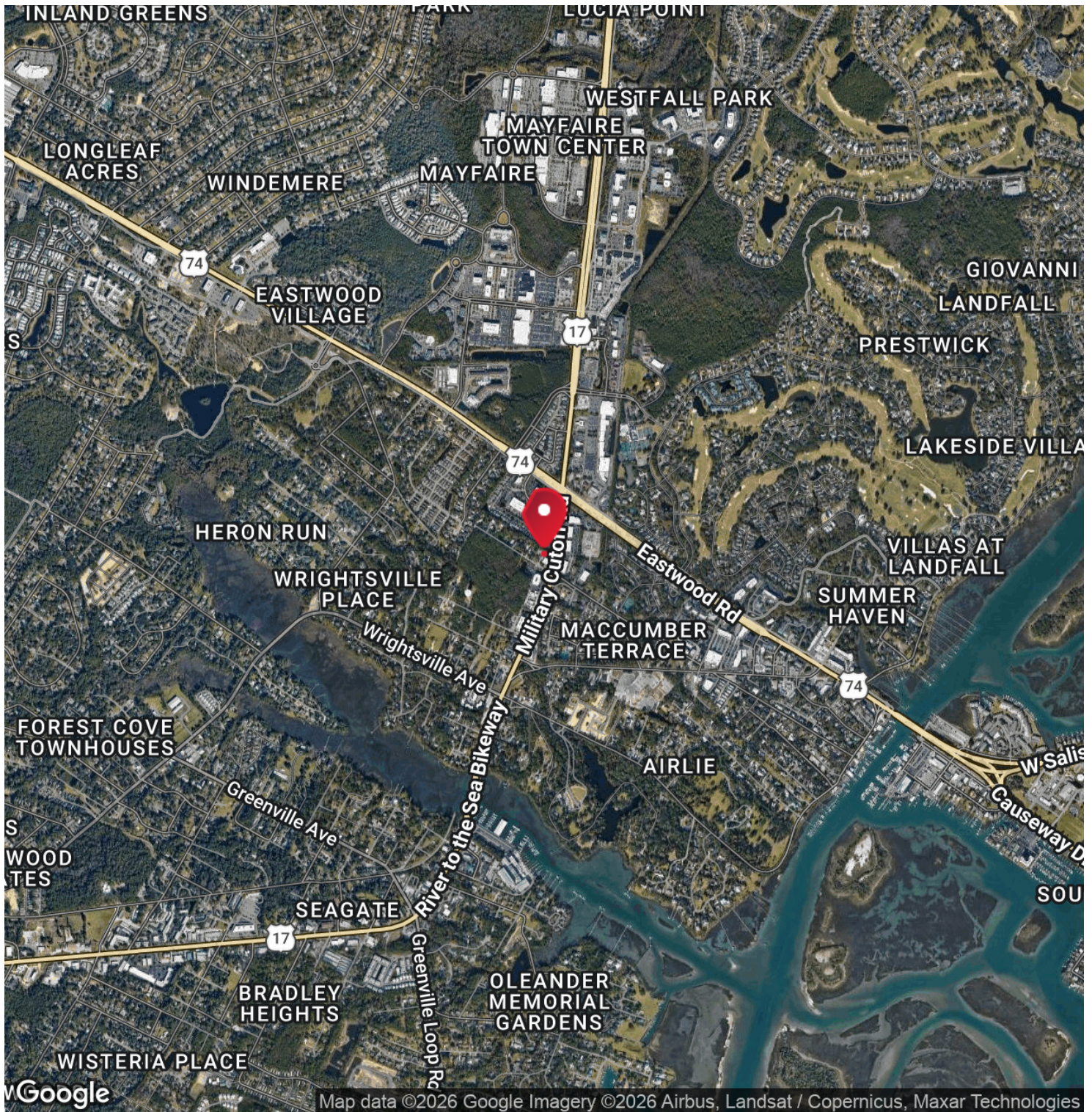
NC #227264

1650 Military Cutoff Rd | Ste 100
Wilmington, NC 28403

All information contained herein is deemed reliable but not guaranteed. Each office independently owned and operated

MILITARY CUTOFF OFFICE SUITE

1442 MILITARY CUTOFF RD | WILMINGTON, NC 28403



KENNETH FISHER - RE/MAX COMMERCIAL
 Each office independently owned and operated

KENNETH FISHER
 Broker / REALTOR
 910.616.2123
 kfisher@beachtownbrokers.com
 NC #227264

1650 Military Cutoff Rd | Ste 100
 Wilmington, NC 28403