



Colliers

Available  
January 1, 2023

**Matt Anderson, SIOR**

Executive Vice President  
+1 804 240 8833  
matt.anderson@colliers.com

---

2221 Edward Holland Dr  
Suite 600 | Richmond, VA  
P: +1 804 320 5500  
colliers.com/richmond

2001 Ware Bottom Spring Rd,  
Chester, VA

Available January 1, 2023

- 100,000 SF  
- 8,309 SF office
- 8 loading docks
- 7 drive-in doors
- 32' clear height
- 1,200-Amp, 3 phase, 4 wire, 480-volt power
- Over 3 acres of secured paved/ concrete yard
- Adjacent to I-95/ RT 10 interchange
- I-2 zoning allows for outdoor storage

**STAG**  
INDUSTRIAL

Copyright © 2022 Colliers International. Information herein has been obtained from sources deemed reliable, however its accuracy cannot be guaranteed. The user is required to conduct their own due diligence and verification.

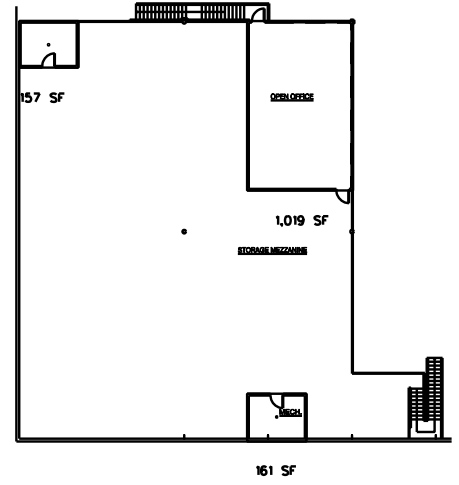
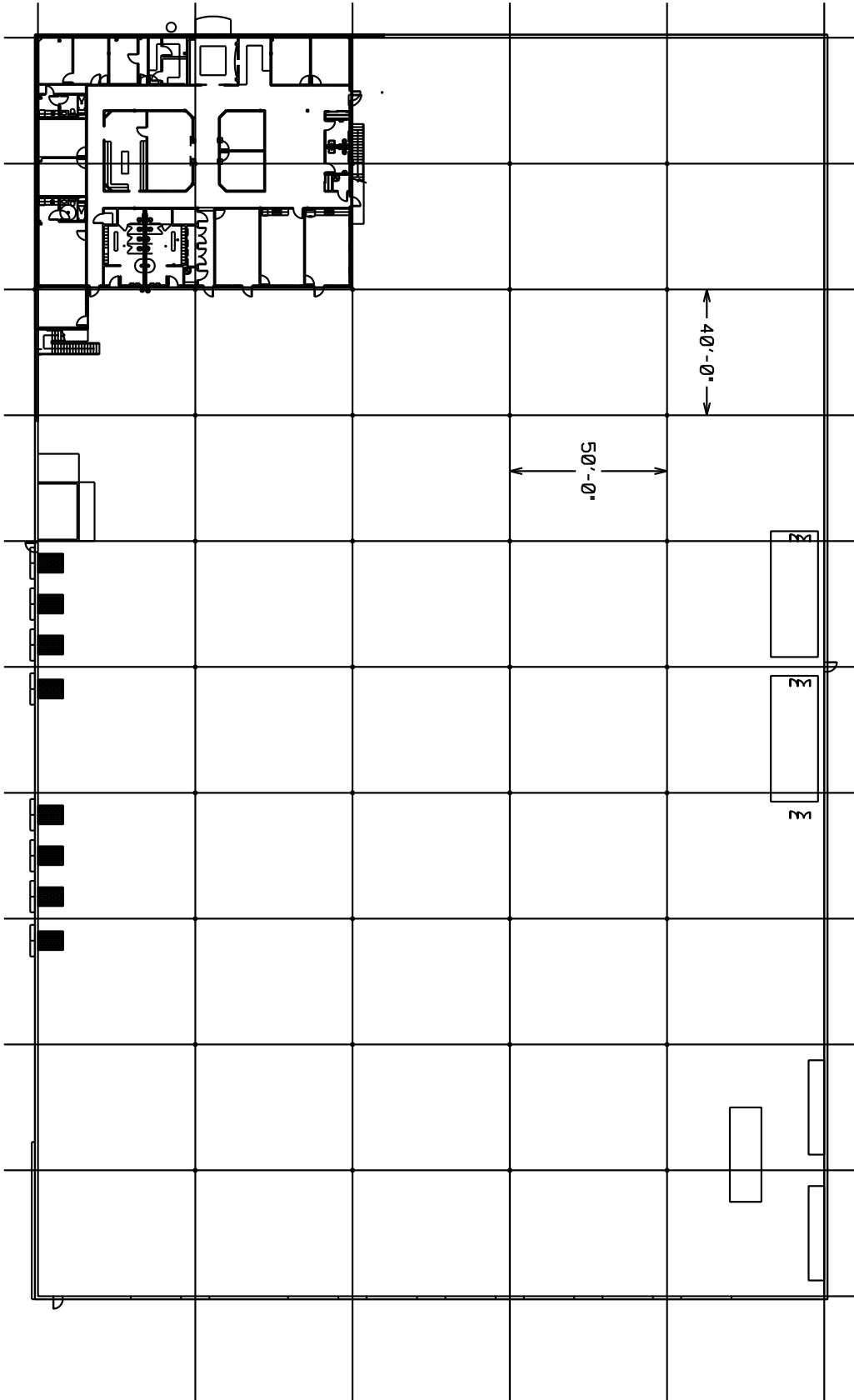
Accelerating success.

2001 Ware Bottom Spring Rd



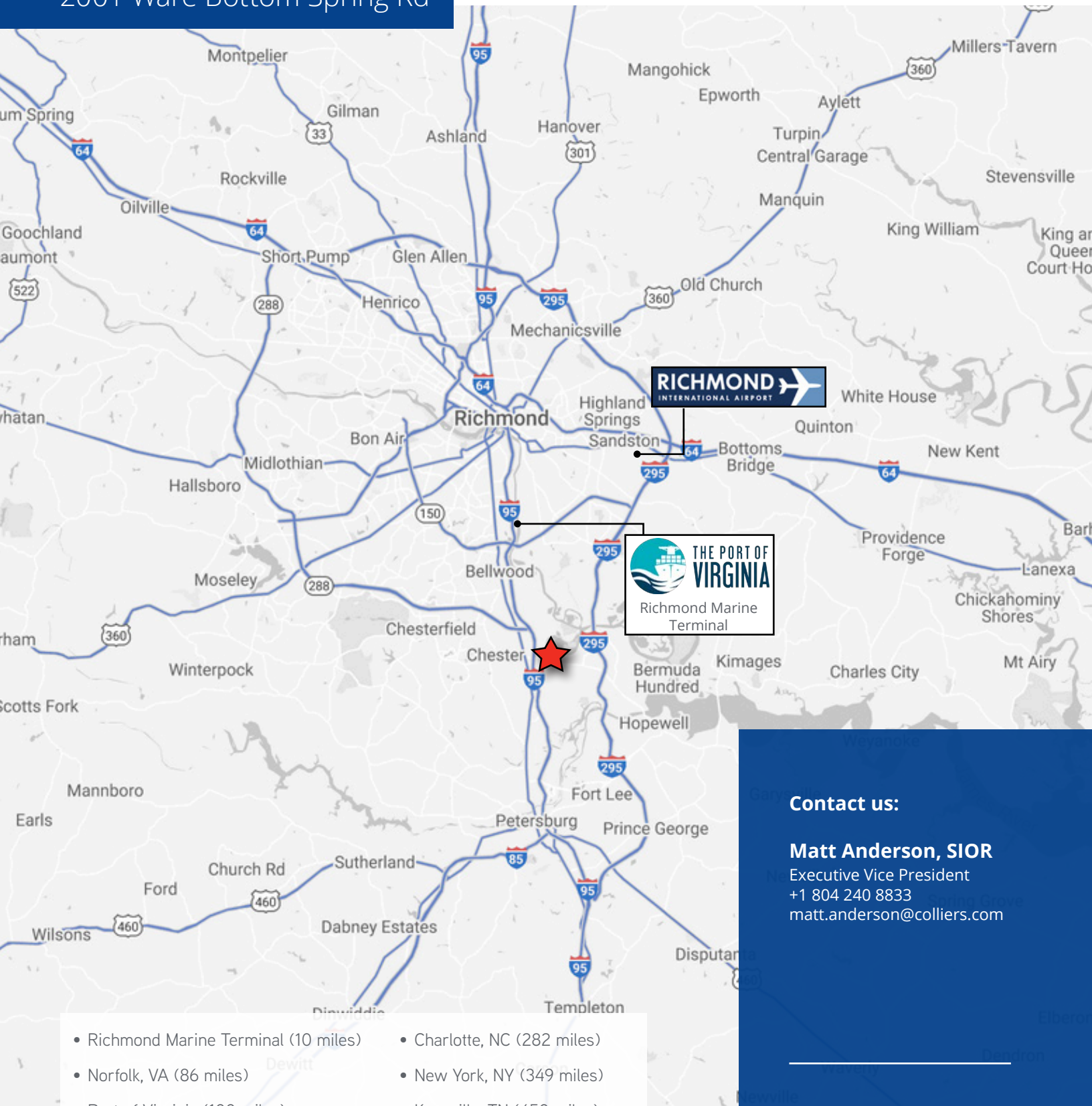
# 2001 Ware Bottom Spring Rd

100,000 SF (8,309 SF office)



Second Floor  
Offices

# 2001 Ware Bottom Spring Rd



- Richmond Marine Terminal (10 miles)
- Norfolk, VA (86 miles)
- Port of Virginia (100 miles)
- Washington, DC (123 miles)
- Raleigh, NC (157 miles)
- Baltimore, MD (168 miles)
- Greensboro, NC (193 miles)
- Philadelphia, PA (262 miles)
- Charlotte, NC (282 miles)
- New York, NY (349 miles)
- Knoxville, TN (450 miles)
- Atlanta, GA (517 miles)
- Detroit, MI (638 miles)
- Indianapolis, IN (641 miles)
- Chicago, IL (813 miles)
- St. Louis, MO (836 miles)

## Contact us:

**Matt Anderson, SIOR**  
Executive Vice President  
+1 804 240 8833  
matt.anderson@colliers.com

## Colliers

2221 Edward Holland Dr  
Suite 600 | Richmond, VA  
P: +1 804 320 5500