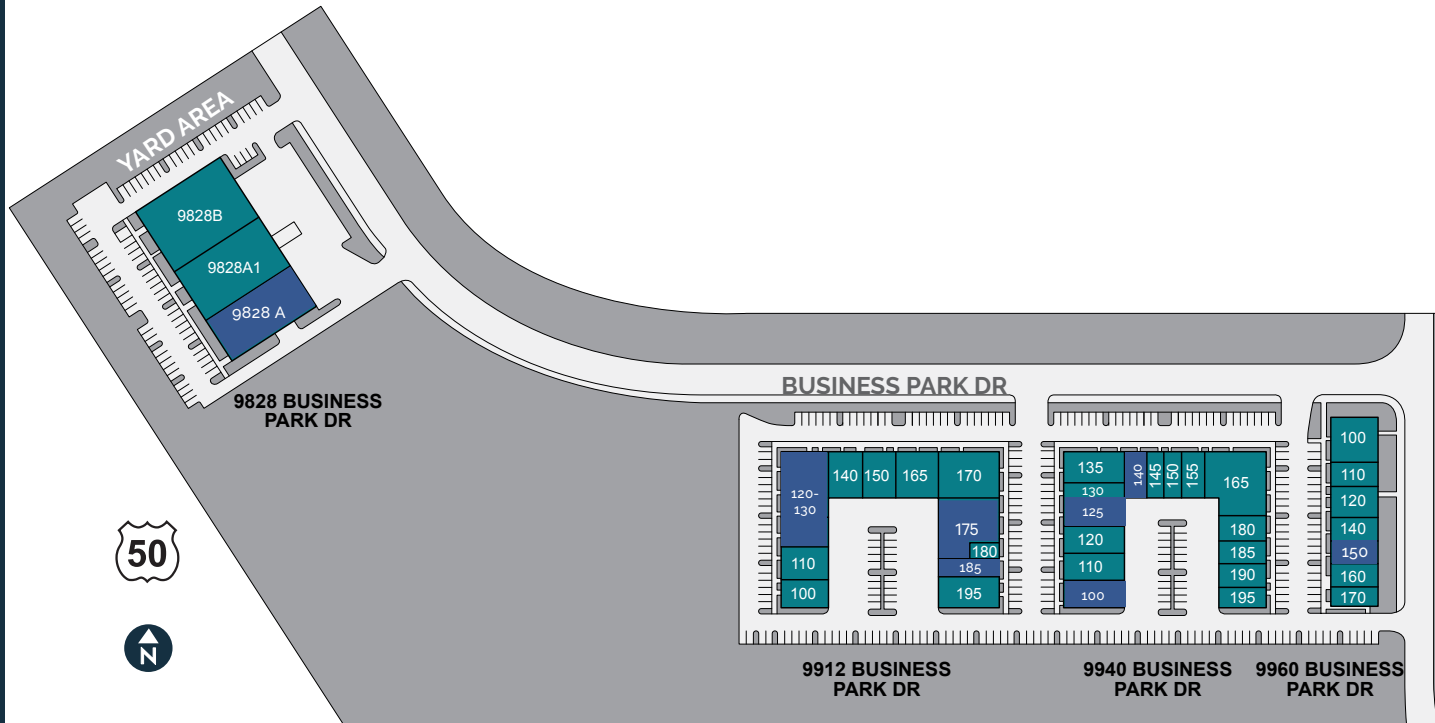


CAPITOL INDUSTRIAL CENTER *SOUTH*

Site Plan



FOR MORE INFORMATION

MATT SUSAC
 +1 916 781 4832
 matt.susac@cbre.com
 Lic. 01979110

TYLER HOWELL
 +1 916 781 4835
 tyler.howell1@cbre.com
 Lic. 02100245

TODD SANFILIPPO
 +1 916 781 4859
 todd.sanfilippo@cbre.com
 Lic. 01045162

www.cbre.com

CAPITOL INDUSTRIAL CENTER SOUTH
 9828, 9912, 9940, 9960
 BUSINESS PARK DRIVE
 SACRAMENTO, CA 95827



AVAILABILITIES

 AVAILABLE

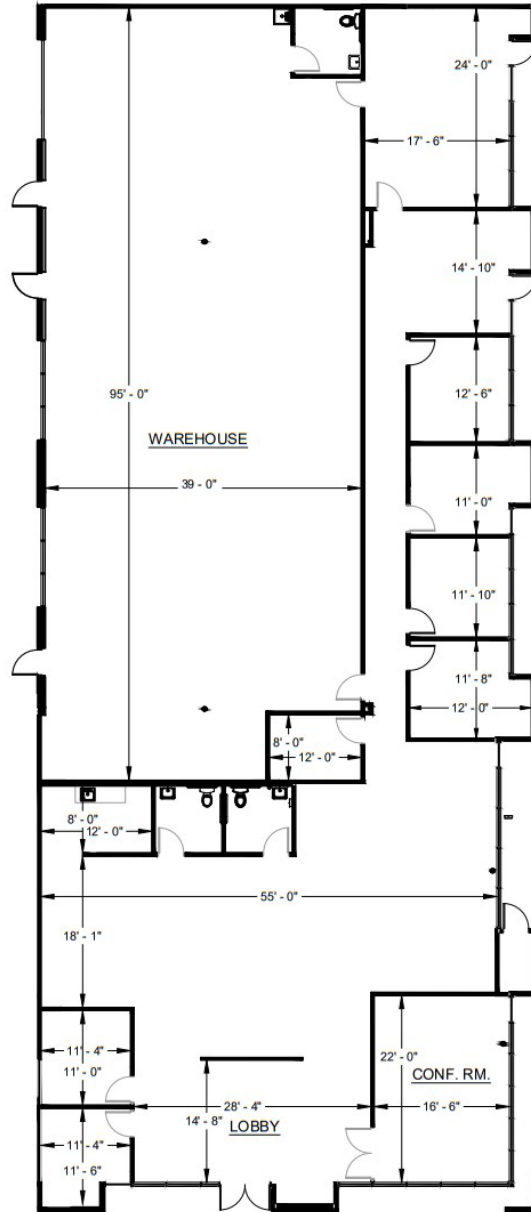
SUITE	TOTAL SF	OFFICE SF	AVAILABLE
9828-A	±13,211 SF	±8,571 SF	Now
9912-120/130	±8,301 SF	±4,570 SF	Now
9912-175	±5,809 SF	±4,318 SF	Now
9912-185	±1,920 SF	±1,073 SF	08/01/26
9940-100	±2,215 SF	±807 SF	Now
9940-125	±2,241 SF	±1,035 SF	Now
9940-140	±1,560 SF	±690 SF	30 days
9960-150	±1,560 SF	±1,560 SF	09/01/26

CAPITOL INDUSTRIAL CENTER *SOUTH*

Suite 9912-120/130



GPR VENTURES



SUITE DATA

Office Area	4,570 SF
Warehouse Area	3,731 SF
Total Suite Area	8,301 SF
Clear Height	14'-0"
Grade Level Doors	1

CAPITOL INDUSTRIAL CENTER SOUTH
 9828, 9912, 9940, 9960
 BUSINESS PARK DRIVE
 SACRAMENTO, CA 95827



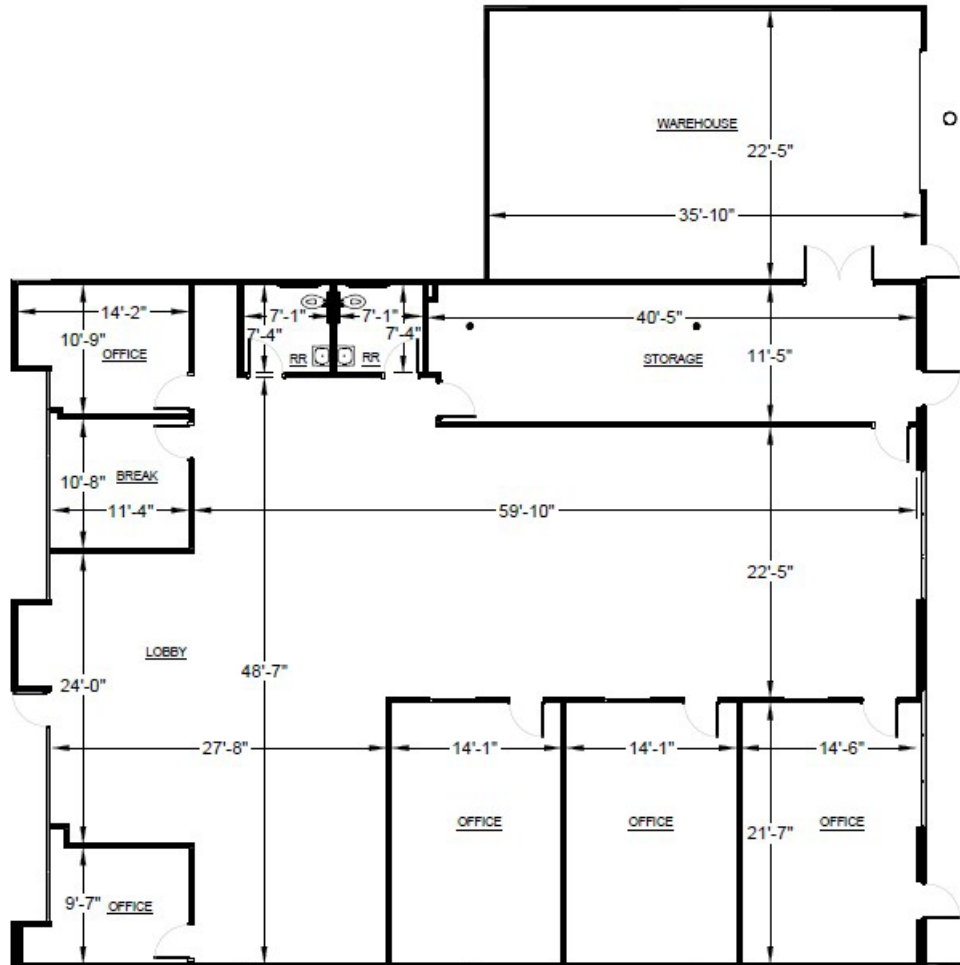
ALL MEASUREMENTS ARE APPROXIMATE.

CAPITOL INDUSTRIAL CENTER *SOUTH*

Suite 9912-175



GPR VENTURES



SUITE DATA

Office Area	4,318 SF
Warehouse Area	1,491 SF
Total Suite Area	5,809 SF
Clear Height	14'-1"
Grade Level Doors	1

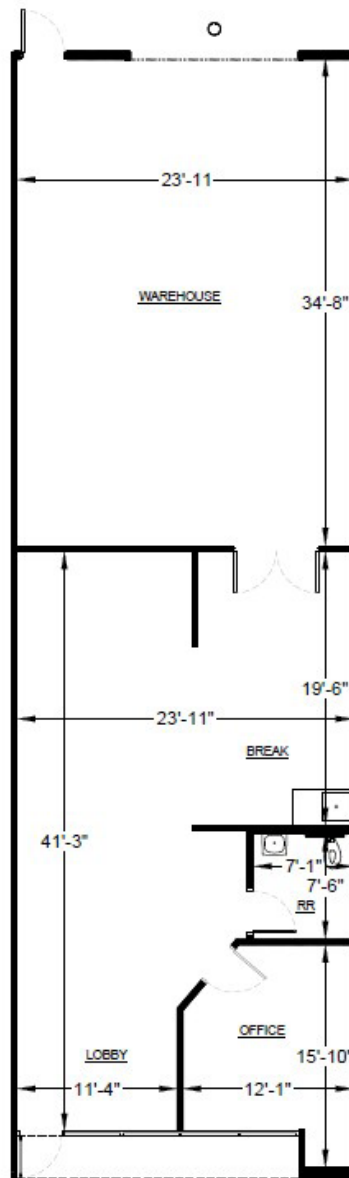
CAPITOL INDUSTRIAL CENTER SOUTH
 9828, 9912, 9940, 9960
 BUSINESS PARK DRIVE
 SACRAMENTO, CA 95827

CBRE

ALL MEASUREMENTS ARE APPROXIMATE.

CAPITOL INDUSTRIAL CENTER *SOUTH*

Suite 9912-185



SUITE DATA

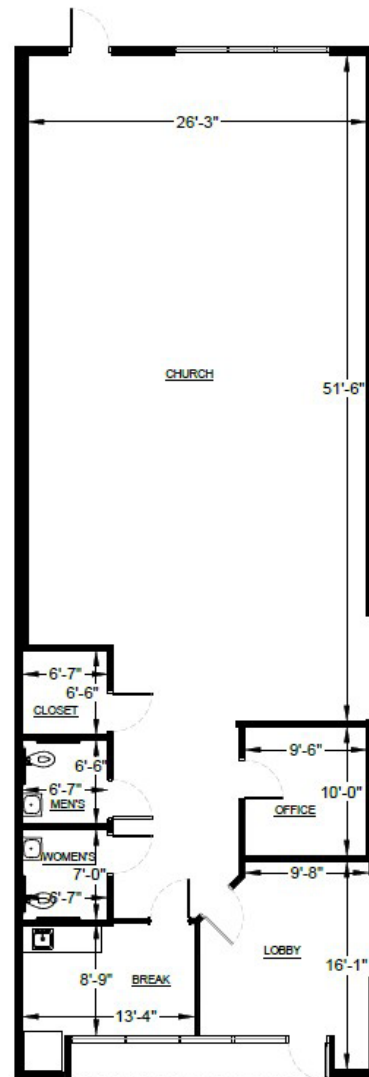
Office Area	1,073 SF
Warehouse Area	847 SF
Total Suite Area	1,920 SF
Clear Height	13'-3"
Grade Level Doors	1

CAPITOL INDUSTRIAL CENTER SOUTH
9828, 9912, 9940, 9960
BUSINESS PARK DRIVE
SACRAMENTO, CA 95827

CBRE

CAPITOL INDUSTRIAL CENTER *SOUTH*

Suite 9940-100



SUITE DATA

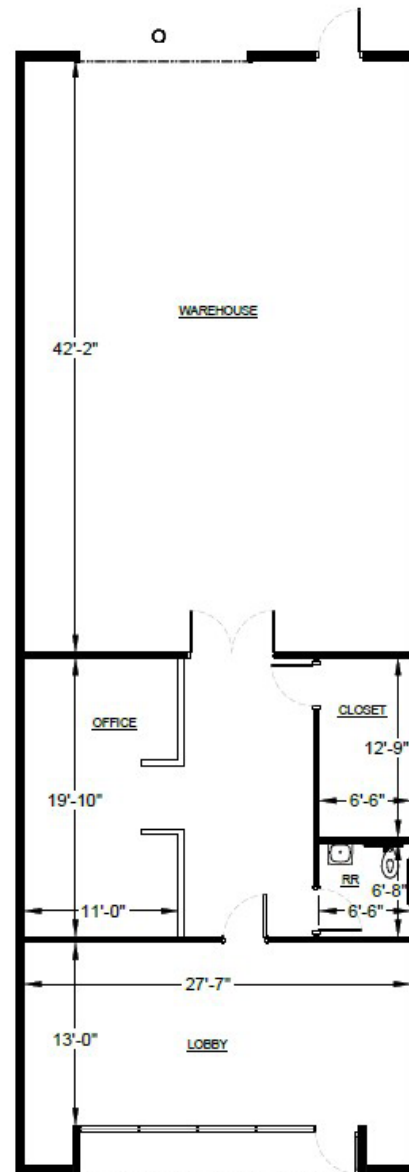
Office Area	807 SF
Warehouse Area	1,408 SF
Total Suite Area	2,215 SF
Clear Height	16'-0"
Grade Level Doors	0

CAPITOL INDUSTRIAL CENTER SOUTH
9828, 9912, 9940, 9960
BUSINESS PARK DRIVE
SACRAMENTO, CA 95827

CBRE

CAPITOL INDUSTRIAL CENTER *SOUTH*

Suite 9940-125



SUITE DATA

Office Area	1,035 SF
Warehouse Area	1,206 SF
Total Suite Area	2,241 SF
Clear Height	16'-0"
Grade Level Doors	1

CAPITOL INDUSTRIAL CENTER SOUTH
9828, 9912, 9940, 9960
BUSINESS PARK DRIVE
SACRAMENTO, CA 95827

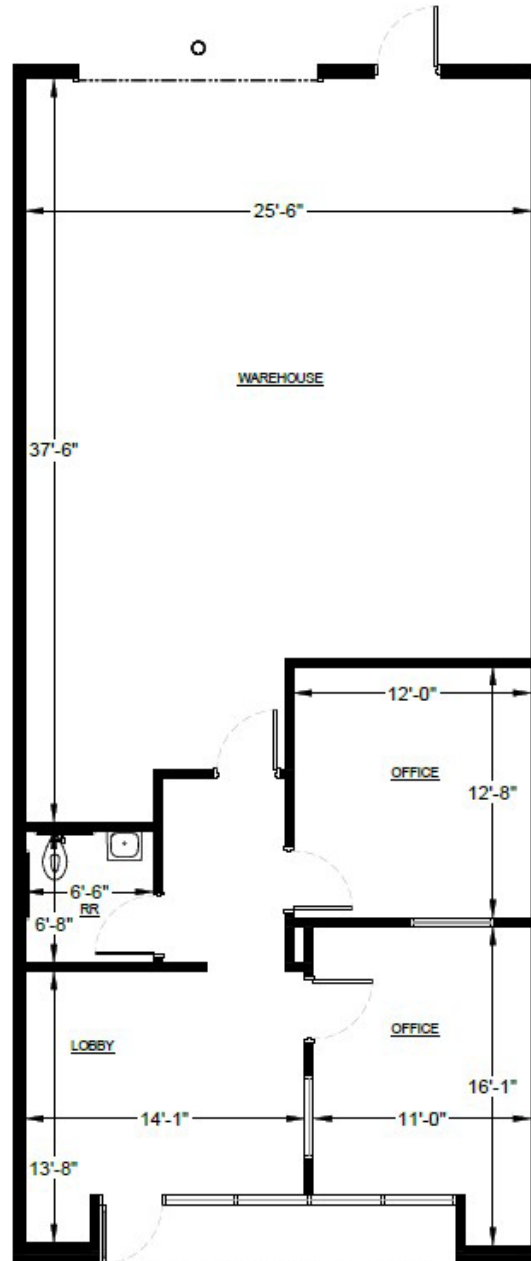
CBRE

CAPITOL INDUSTRIAL CENTER *SOUTH*

Suite 9940-140



GPR VENTURES



SUITE DATA

Office Area	690 SF
Warehouse Area	870 SF
Total Suite Area	1,560 SF

Clear Height	16'-0"
Grade Level Doors	1

CAPITOL INDUSTRIAL CENTER SOUTH
9828, 9912, 9940, 9960
BUSINESS PARK DRIVE
SACRAMENTO, CA 95827

CBRE

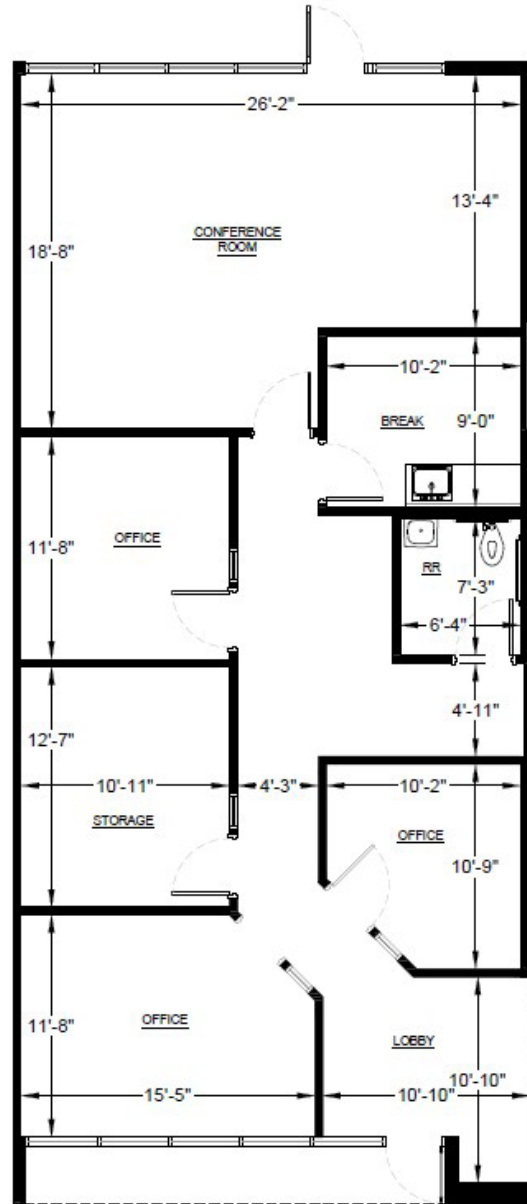
ALL MEASUREMENTS ARE APPROXIMATE.

CAPITOL INDUSTRIAL CENTER *SOUTH*

Suite 9960-150



GPR VENTURES



SUITE DATA

Office Area	1,560 SF
Warehouse Area	0 SF
Total Suite Area	1,560 SF

CAPITOL INDUSTRIAL CENTER SOUTH
 9828, 9912, 9940, 9960
 BUSINESS PARK DRIVE
 SACRAMENTO, CA 95827

CBRE

ALL MEASUREMENTS ARE APPROXIMATE.

CAPITOL INDUSTRIAL CENTER *SOUTH*



GPR VENTURES



FOR MORE INFORMATION:

MATT SUSAC

+1 916 781 4832

matt.susac@cbre.com

Lic. 01979110

TYLER HOWELL

+1 916 781 4835

tyler.howell1@cbre.com

Lic. 02100245

TODD SANFILIPPO

+1 916 781 4859

todd.sanfilippo@cbre.com

Lic. 01045162

CBRE

1512 Eureka Road, Ste. 100

Roseville, CA 95661

www.cbre.com



CAPITOL INDUSTRIAL CENTER SOUTH

9828, 9912, 9940, 9960

BUSINESS PARK DRIVE

SACRAMENTO, CA 95827

CBRE

CAPITOL INDUSTRIAL CENTER SOUTH



FOR MORE INFORMATION:

MATT SUSAC
 +1 916 781 4832
 matt.susac@cbre.com
 Lic. 01979110

TYLER HOWELL
 +1 916 781 4835
 tyler.howell1@cbre.com
 Lic. 02100245

TODD SANFILIPPO
 +1 916 781 4859
 todd.sanfilippo@cbre.com
 Lic. 01045162

CBRE
 1512 Eureka Road, Ste. 100
 Roseville, CA 95661
 www.cbre.com

CAPITOL INDUSTRIAL CENTER SOUTH
 9828, 9912, 9940, 9960
 BUSINESS PARK DRIVE
 SACRAMENTO, CA 95827

Amenities & Improvements

CBRE