



OFFERING SUMMARY

Lease Rate:	\$7.00 SF/yr (NNN)
Building Size:	7,000 SF Warehouse: 3,600 SF Office: 3,400 SF +/-
Available SF:	7,000 SF
Zoning:	Commercial

PROPERTY HIGHLIGHTS

- Suburban Airport
- 3,600 SF warehouse space and around 3,400 SF office space
- Airport Taxi/Runway fees are negotiable direct with owner



The information contained herein is from sources deemed reliable, but no warranty or representation is made as to accuracy thereof. It is subject to correction of errors, omissions, change of price prior to sale or withdrawal from market, all without notice. Further, no warranty or representation is made in regard to any environmental condition that may or may not exist

KYLE JURGENSON

419.708.0835

kjurgenson@millerdiversified.com



LOCATION INFORMATION

Street Address	4369 Section Rd.
City, State, Zip	Ottawa Lake, MI 49267
County/Township	Monroe
Nearest Intersection	Section Rd. and Whiteford Ctr.

BUILDING SPECIFICATIONS

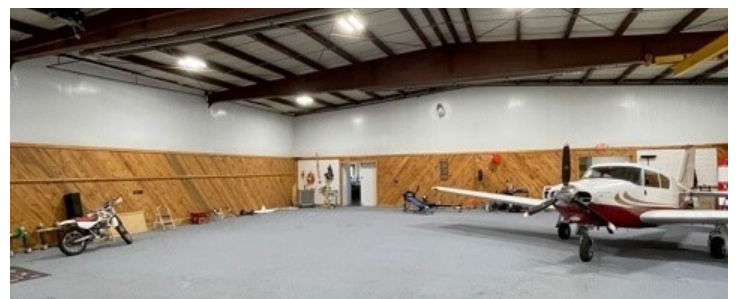
Building Size	7,000 SF
Construction Type	Steel
HVAC	Natural Gas
Restroom	1
Electric	220 Amp
Roof	Metal
Free Standing	Yes
Ceiling Height	16' warehouse, 8' office
Overhead Doors	Folding, 1 Man door
Floors	Concrete
Floor Drains	Trench

DEMOGRAPHICS

	1 MILE	5 MILES	10 MILES
Total Households	759	51,681	181,649
Total Population	2,018	125,623	451,194
Average HH income	\$86,626	\$70,300	\$58,287

PARKING & TRANSPORTATION

Street Parking	Yes
----------------	-----

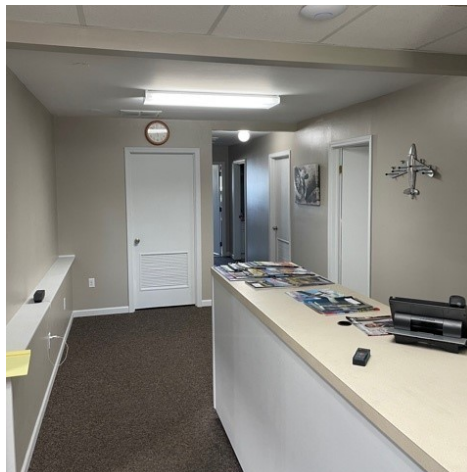
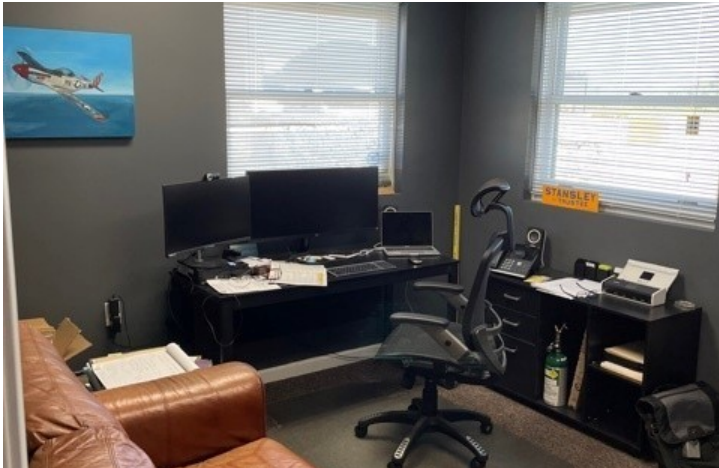


KYLE JURGENSON

419.708.0835

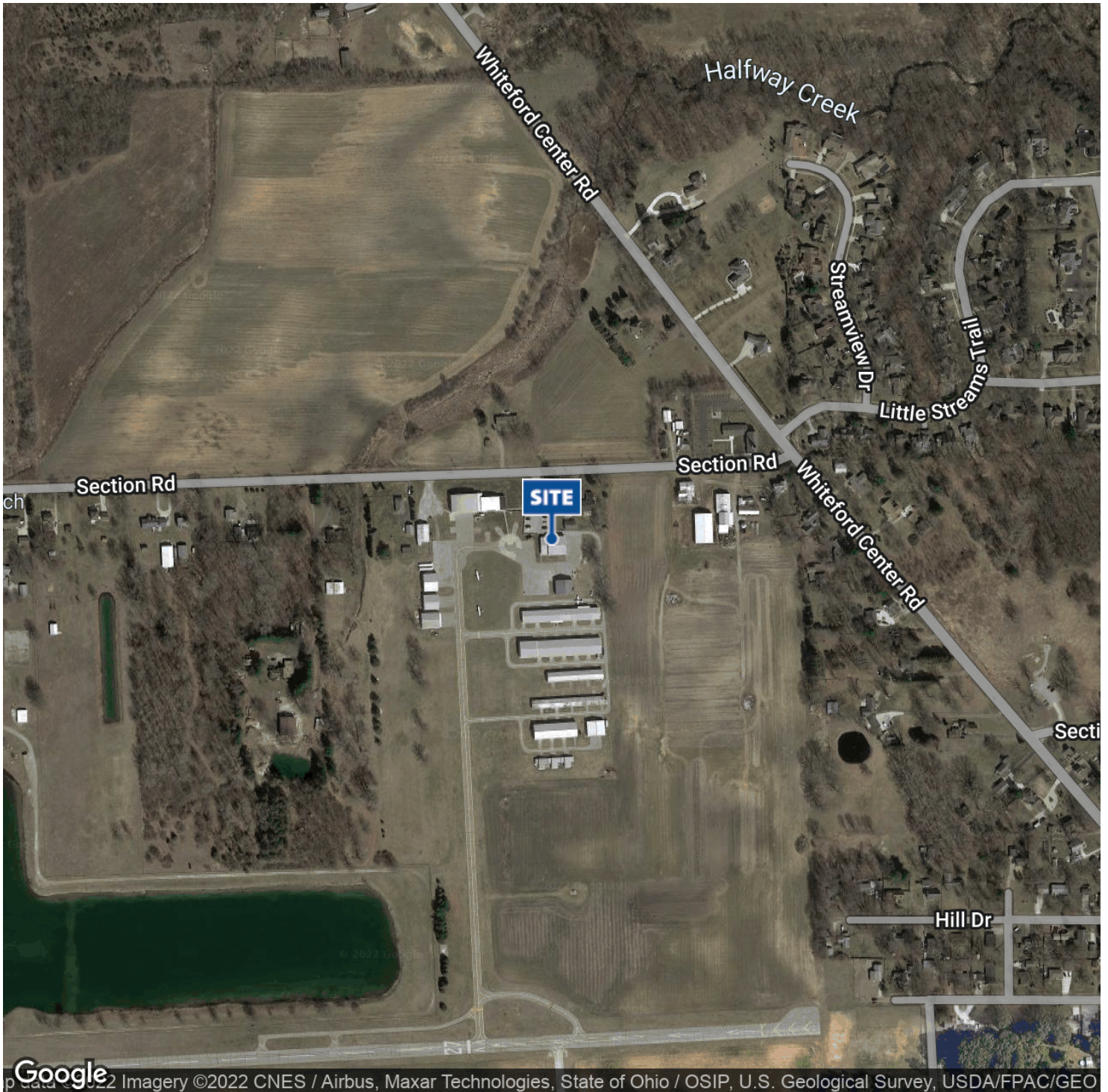
kjurgenson@millerdiversified.com





KYLE JURGENSON
419.708.0835
kjurgenson@millerdiversified.com





KYLE JURGENSON

419.708.0835

kjurgenson@millerdiversified.com

