



**Keegan & Coppin**  
COMPANY, INC.

FOR LEASE

**30 5TH STREET, SUITE 200  
PETALUMA, CA**

**Downtown Petaluma  
Professional Office**



Go beyond broker.

REPRESENTED BY:

**SARA WANN, PARTNER**  
LIC # 01437146 (707) 664-1400, EXT 108  
[SWANN@KEEGANCOPPIN.COM](mailto:SWANN@KEEGANCOPPIN.COM)



# PROFESSIONAL DOWNTOWN OFFICE FOR LEASE



30 5TH STREET, STE 200  
PETALUMA, CA

**DOWNTOWN PETALUMA  
PROFESSIONAL OFFICE**

## PROPERTY INFORMATION

### HIGHLIGHTS

- Professional Office
- Historic Victorian
- Downtown Petaluma
- Peaceful West Side Location
- Beautifully Maintained
- Pride of Ownership

### OFFICE SPACE

**Suite 200:** 850 +/- sq ft

### DESCRIPTION

Unique opportunity to occupy the entire 2nd floor. Suite includes 3 spacious private offices with high ceilings, large operable windows for abundant natural light and private restroom. Period details throughout add to the charm and character of the building. With fantastic proximity to everything Petaluma's downtown has to offer, this is quintessential west side Petaluma at its best.

### DESCRIPTION OF PREMISES

Professional office suite in a beautiful historic Victorian. Perfect for financial services, attorneys, insurance and other professional service providers.

### LEASE TERMS

#### Rate

\$2.20 per sq ft

#### Terms

Modified Full Service Lease  
Utilities Included  
3 - 5 year lease term preferred

#### Parking

Street/Public Garage

#### Zoning

MU2 (Mixed Use 2)

Keegan & Coppin Co., Inc.  
1201 North McDowell Boulevard  
Petaluma, CA 94954  
www.keegancoppin.com  
(707) 664-1400

The above information, while not guaranteed, has been secured from sources we believe to be reliable. Submitted subject to error, change or withdrawal. An interested party should verify the status of the property and the information herein.

REPRESENTED BY:

**SARA WANN, PARTNER**  
LIC # 01437146 (707) 664-1400, EXT 108  
SWANN@KEEGANCOPPIN.COM



# PROFESSIONAL DOWNTOWN OFFICE FOR LEASE



30 5TH STREET, STE 200  
PETALUMA, CA

**DOWNTOWN PETALUMA  
PROFESSIONAL OFFICE**

## DESCRIPTION OF AREA

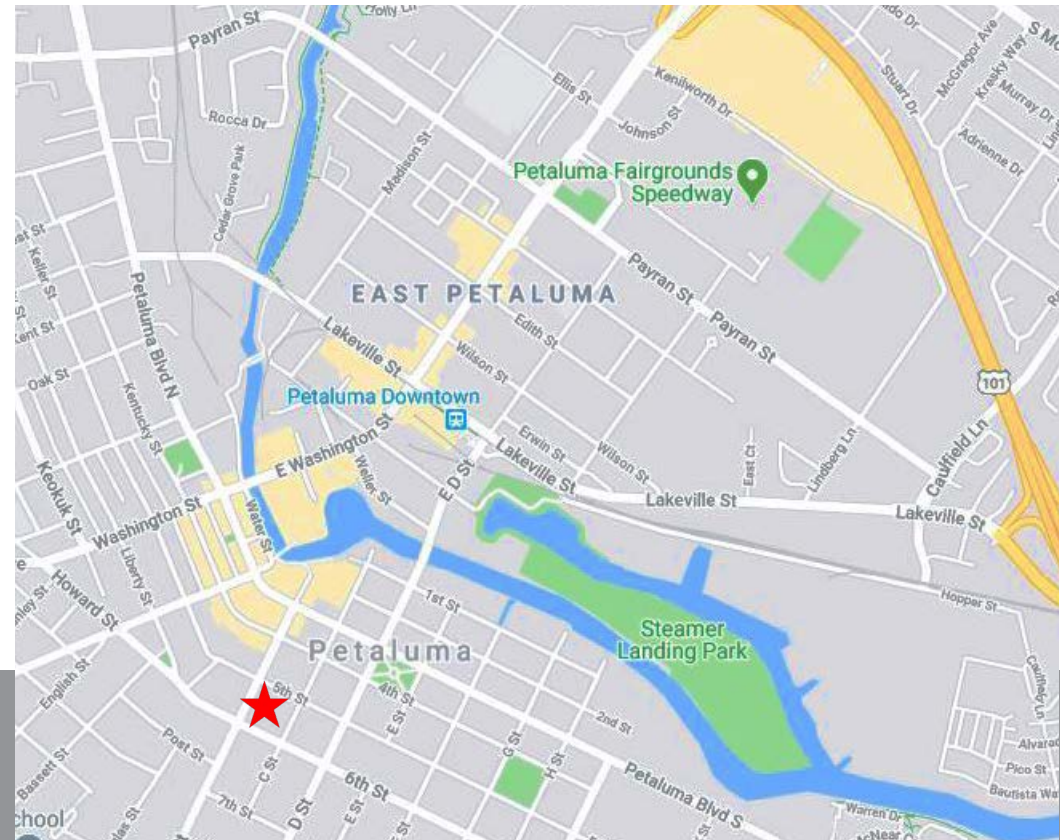
This bucolic setting offers a little haven of peace and quiet while benefiting from the proximity to everything downtown has to offer. Walking distance to Petaluma's best restaurants, coffee shops and entertainment. Take a leisurely lunch and stroll down to the river or admire Petaluma's historic architecture. If you have to work, this is the place to do it.

## NEARBY AMENITIES

- Downtown Petaluma
- Walking distance to a variety of retail, including high quality restaurants and food establishments, soft goods, hotels, and other service retailers

## TRANSPORTATION ACCESS

- Easy access to Highway 101



REPRESENTED BY:

**SARA WANN, PARTNER**  
LIC # 01437146 (707) 664-1400, EXT 108  
SWANN@KEEGANCOPPIN.COM

The above information, while not guaranteed, has been secured from sources we believe to be reliable. Submitted subject to error, change or withdrawal. An interested party should verify the status of the property and the information herein.



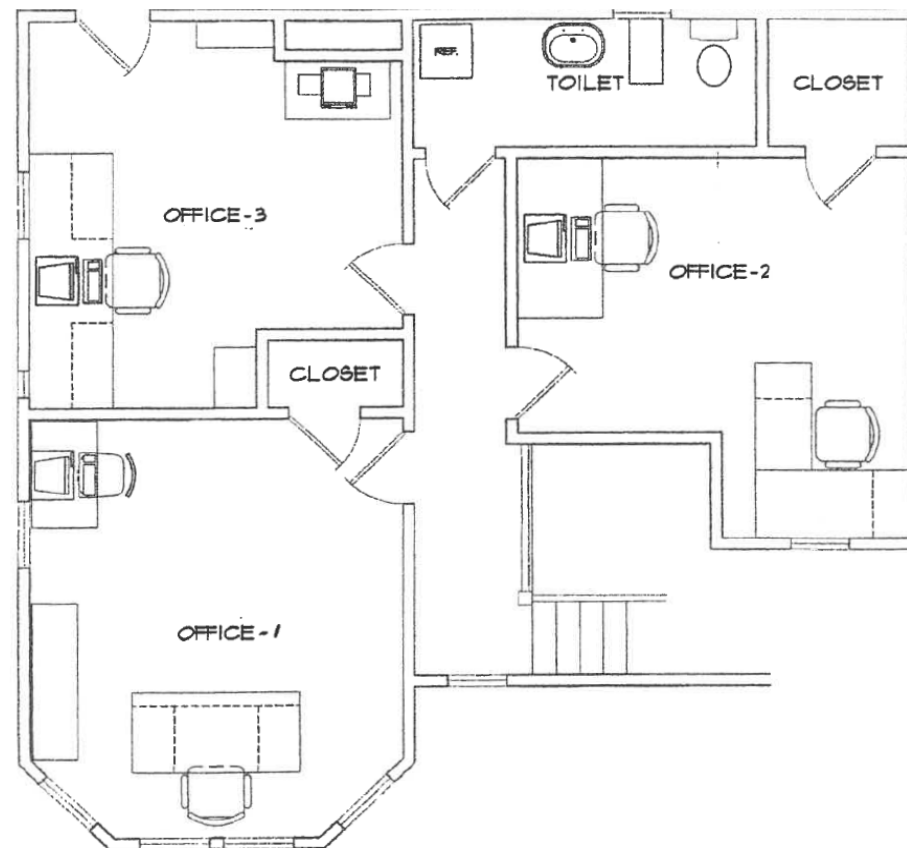
# 30 5TH STREET, PETALUMA, CA FLOOR PLAN



30 5TH STREET, STE 200  
PETALUMA, CA

**DOWNTOWN PETALUMA  
PROFESSIONAL OFFICE**

SUITE 200  
850+/- RSF



**PRESENTED BY:**

**SARA WANN, PARTNER**  
LIC # 01437146 (707) 664-1400, EXT 108  
SWANN@KEEGANCOPPIN.COM

The above information, while not guaranteed, has been secured from sources we believe to be reliable. Submitted subject to error, change or withdrawal. An interested party should verify the status of the property and the information herein.

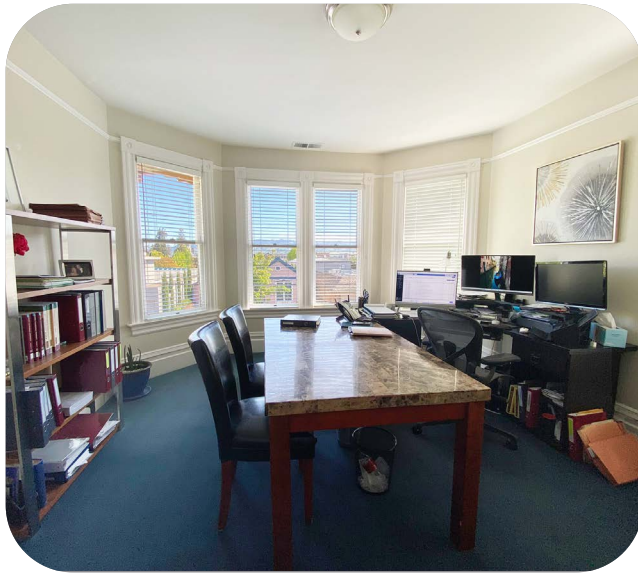


# 30 5TH STREET, PETALUMA, CA PHOTOS



30 5TH STREET, STE 200  
PETALUMA, CA

**DOWNTOWN PETALUMA  
PROFESSIONAL OFFICE**



**PRESENTED BY:**

**SARA WANN, PARTNER**  
LIC # 01437146 (707) 664-1400, EXT 108  
SWANN@KEEGANCOPPIN.COM

The above information, while not guaranteed, has been secured from sources we believe to be reliable. Submitted subject to error, change or withdrawal. An interested party should verify the status of the property and the information herein.



# 30 5TH STREET, PETALUMA, CA AERIAL MAP



30 5TH STREET, STE 200  
PETALUMA, CA

DOWNTOWN PETALUMA  
PROFESSIONAL OFFICE



PRESENTED BY:

SARA WANN, PARTNER  
LIC # 01437146 (707) 664-1400, EXT 108  
SWANN@KEEGANCOPPIN.COM