

# TOK

COMMERCIAL

# 142 MAIN AVE

RIGBY, ID



**HIGH VISIBILITY**  
RETAIL, OFFICE, EVENT SPACE  
**FOR LEASE**

CONTACT



**DUSTIN MORTIMER**

208.656.2272  
dustin@tokcommercial.com

**NICK TERRY**

208.357.4678  
nickt@tokcommercial.com

HIGHLIGHTS



- Fully remodeled event center
- Downtown Rigby
- Ample parking
- Great tenant visibility and exceptional window line
- Growing market

DETAILS



<b>LEASE TYPE</b>	NNN
<b>LEASE RATE</b>	\$15.00/SF
<b>BLDG TYPE</b>	Retail   Office   Flex
<b>BLDG/SPACE SIZE</b>	5,800 SF
<b>BASEMENT</b>	1,800 SF
<b>AVAILABLE</b>	Immediately

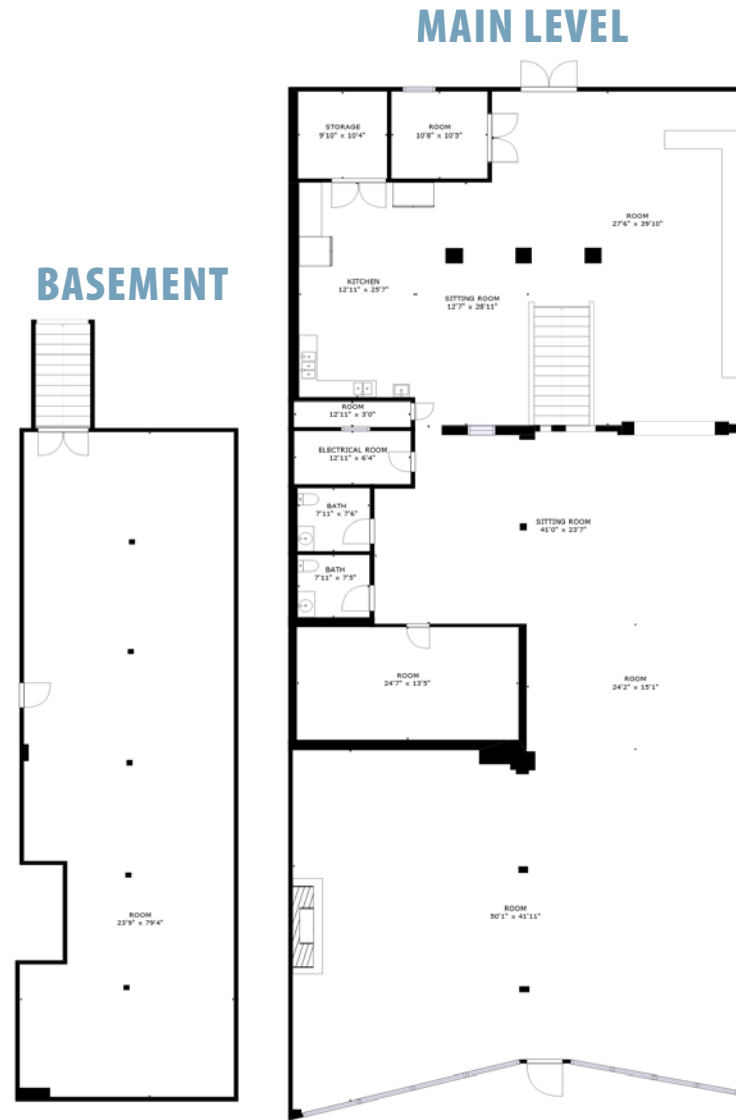
# PHOTOS - PARKING



# PHOTOS - INTERIOR SPACE



# FLOORPLAN



# AERIAL OVERVIEW

