

FOR SALE

RESIDENTIAL DEVELOPMENT OPPORTUNITY

20350 W INDIAN CREEK ROAD

Mundelein, Illinois



www.cbre.us/lsgoakbrook

CBRE

FOR SALE RESIDENTIAL DEVELOPMENT OPPORTUNITY

20350 W INDIAN CREEK RD

Mundelein, Illinois

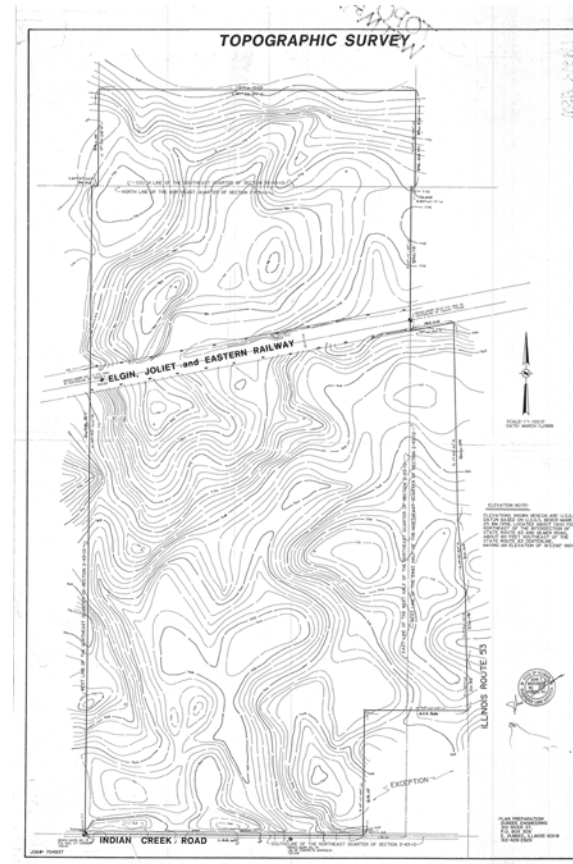


PROPERTY HIGHLIGHTS

- + ±93.94 acres
- + Zoned Agricultural
- + Prime Residential Redevelopment Opportunity
- + Contiguous Land (+/-47.4 acres) to the west also available
- + Freemont schools in Mundelein District 79
- + Parcel Numbers:
14-02-200-001, 14-02-200-010,
14-02-200-008
- + Taxes: \$15,942
- + Asking: \$3,000,000
- + Please call for additional information



SURVEY



www.cbre.us/lsgoakbrook

CBRE

FOR SALE RESIDENTIAL DEVELOPMENT OPPORTUNITY

20350 W INDIAN CREEK RD

Mundelein, Illinois



CONTIGUOUS **LAND AVAILABLE**



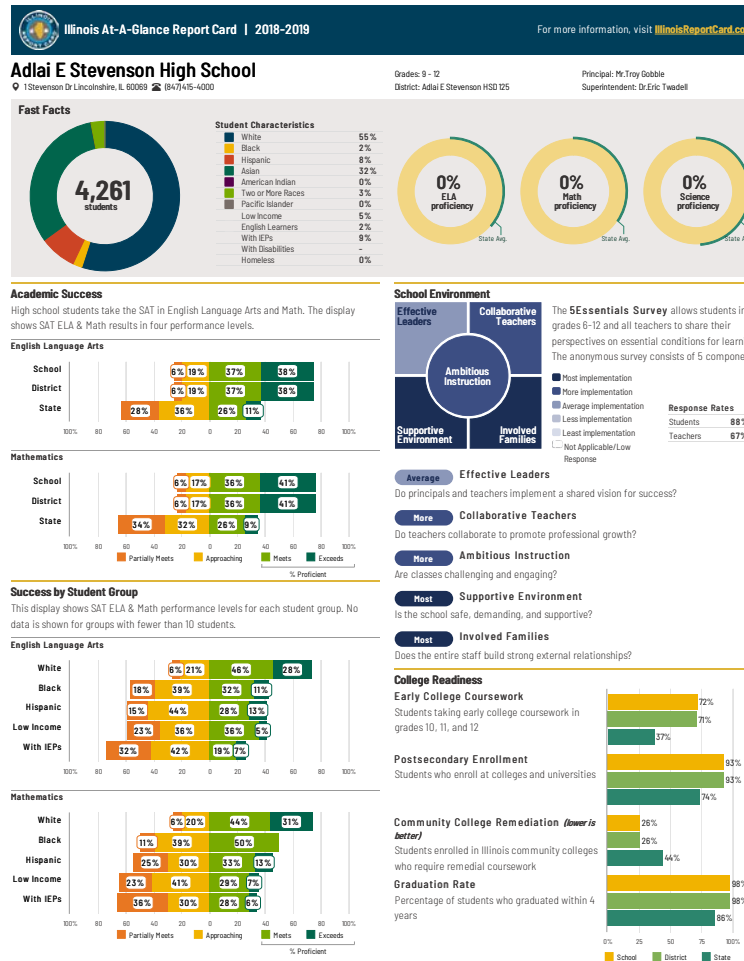
www.cbre.us/lsgoakbrook

CBRE

FOR SALE RESIDENTIAL DEVELOPMENT OPPORTUNITY

20350 W INDIAN CREEK RD

Mundelein, Illinois



www.cbre.us/lsgoakbrook

CBRE

FOR SALE RESIDENTIAL DEVELOPMENT OPPORTUNITY

20350 W INDIAN CREEK RD

Mundelein, Illinois



AREA RETAIL



www.cbre.us/lsgoakbrook

CBRE

FOR SALE RESIDENTIAL DEVELOPMENT OPPORTUNITY

20350 W INDIAN CREEK RD

Mundelein, Illinois



DEMOGRAPHIC SNAPSHOT

DEMOGRAPHIC SNAPSHOT	1 MILE	3 MILES	5 MILES
Population	2,474	43,970	122,887
Average Household Income	\$184,853	\$141,693	\$153,079
Average Housing Value	\$580,417	\$435,528	\$444,481



FLOODPLAIN/WETLAND AERIAL



CONTACT US

BRIAN BUCKINGHAM

First Vice President
+1 630 573 7021
brian.buckingham@cbre.com

MIKE SMITH

Associate
+1 630 573 7804
mike.r.smith@cbre.com

© 2020 CBRE, Inc. All rights reserved. This information has been obtained from sources believed reliable, but has not been verified for accuracy or completeness. You should conduct a careful, independent investigation of the property and verify all information. Any reliance on this information is solely at your own risk. CBRE and the CBRE logo are service marks of CBRE, Inc. All other marks displayed on this document are the property of their respective owners. Photos herein are the property of their respective owners. Use of these images without the express written consent of the owner is prohibited.

www.cbre.us/lsgoakbrook

CBRE