

OFFICE FOR LEASE

Southside of Pittsburgh



PROPERTY DETAILS:

- ❖ Corner office space featuring open loft-like rooms.
- ❖ Prime location in Southside, near to many restaurants, public access and close to downtown
- ❖ Kitchen, balcony, and two bathrooms are included.
- ❖ Asking \$7/SF / \$915/mth

For additional information or to arrange to inspect this property, please contact Jerry Speer – jerry@equityrealestate.net

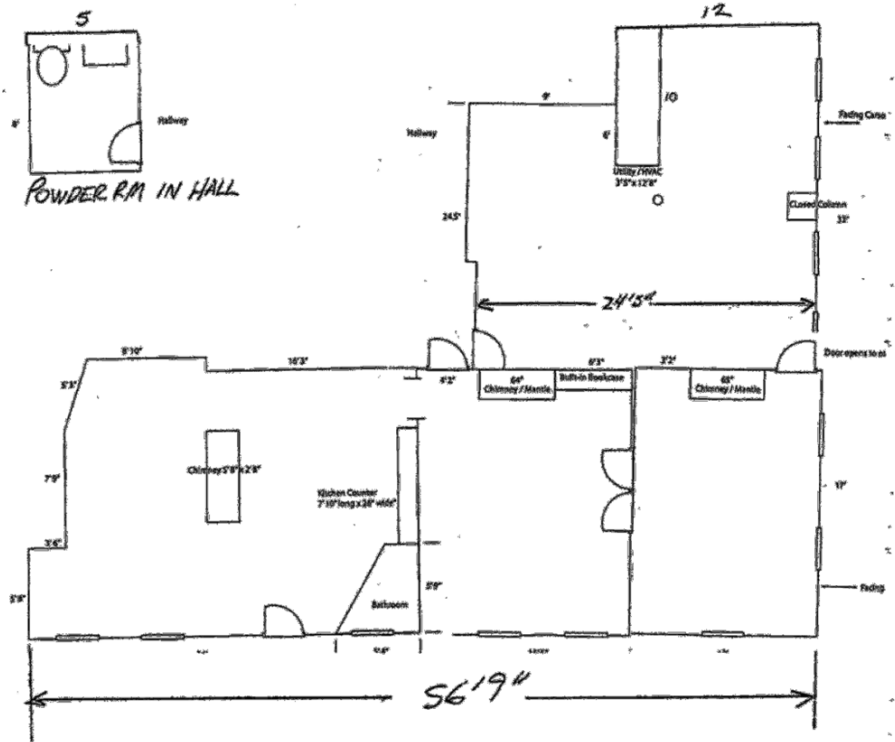


412-422-1600

2029 Murray Avenue – Pittsburgh, PA 15217

All information furnished regarding property for sale, rental or financing is from sources deemed reliable. No representation is made as to the accuracy thereof and it is submitted subject to errors, omissions, change of price, rental or other conditions, prior sale, lease or financing, or withdrawal notice.

1224 East Carson Street
Suites 201 + 202
Approximately 1,570 Square Feet



This Is Not Drawn by An Architect
Do Not Scale

