



## 830 Main Street

Baton Rouge, Louisiana

### Property Features

- Executive Office Suites for Lease
- Interstate Access
- Receptionist, Parking, Wifi, Utilities, and Janitorial Services included
- Access to Conference Room, Kitchen, and Bathrooms
- \$23/SF for individual suites
- **Entire 2<sup>nd</sup> floor can be leased out**

**Erin Caballero**

225.297.7868

[erinc@latterblum.com](mailto:erinc@latterblum.com)

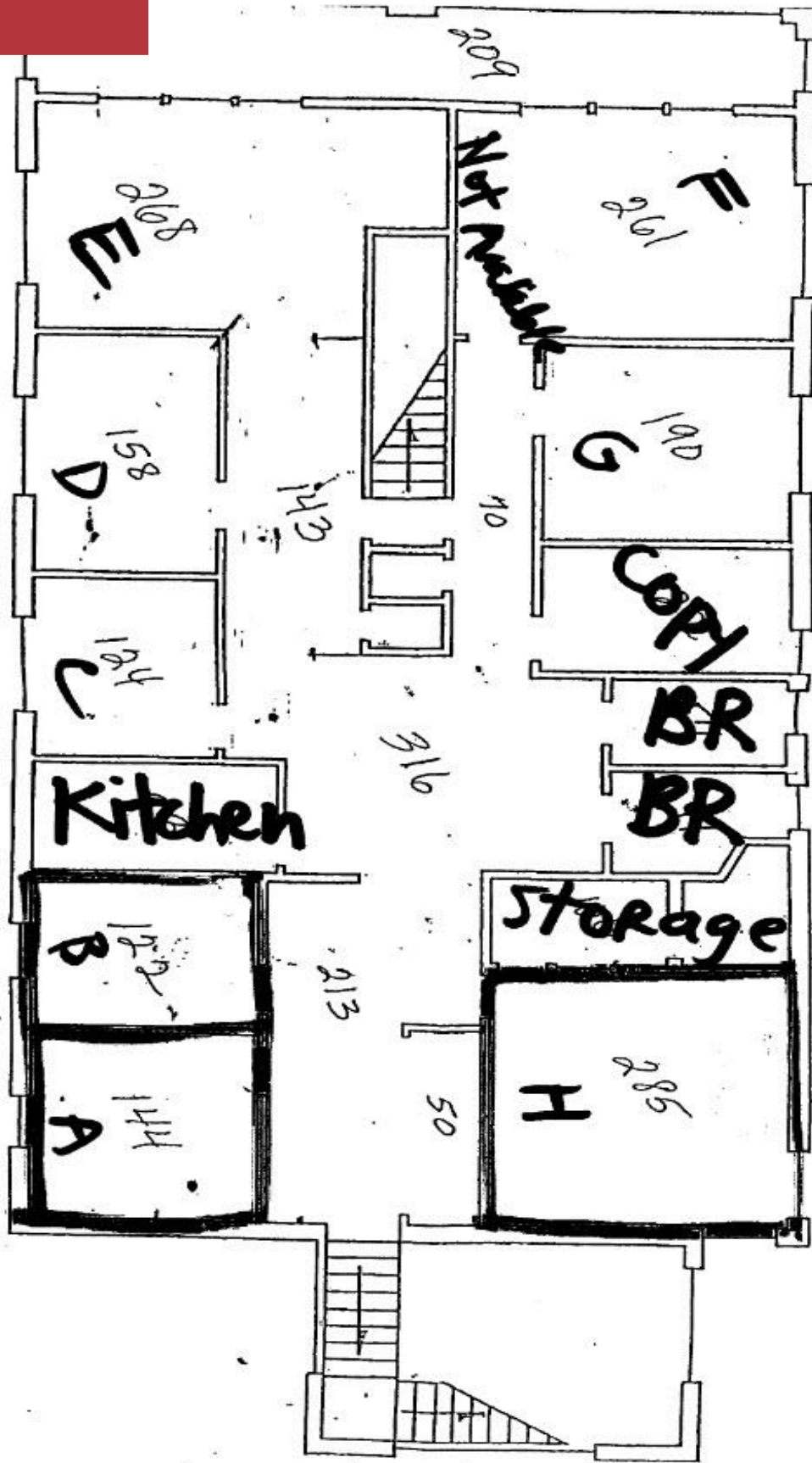
**Jordan Sutton**

318.537.3434

[jsutton@latterblum.com](mailto:jsutton@latterblum.com)

For Lease

# Office Space



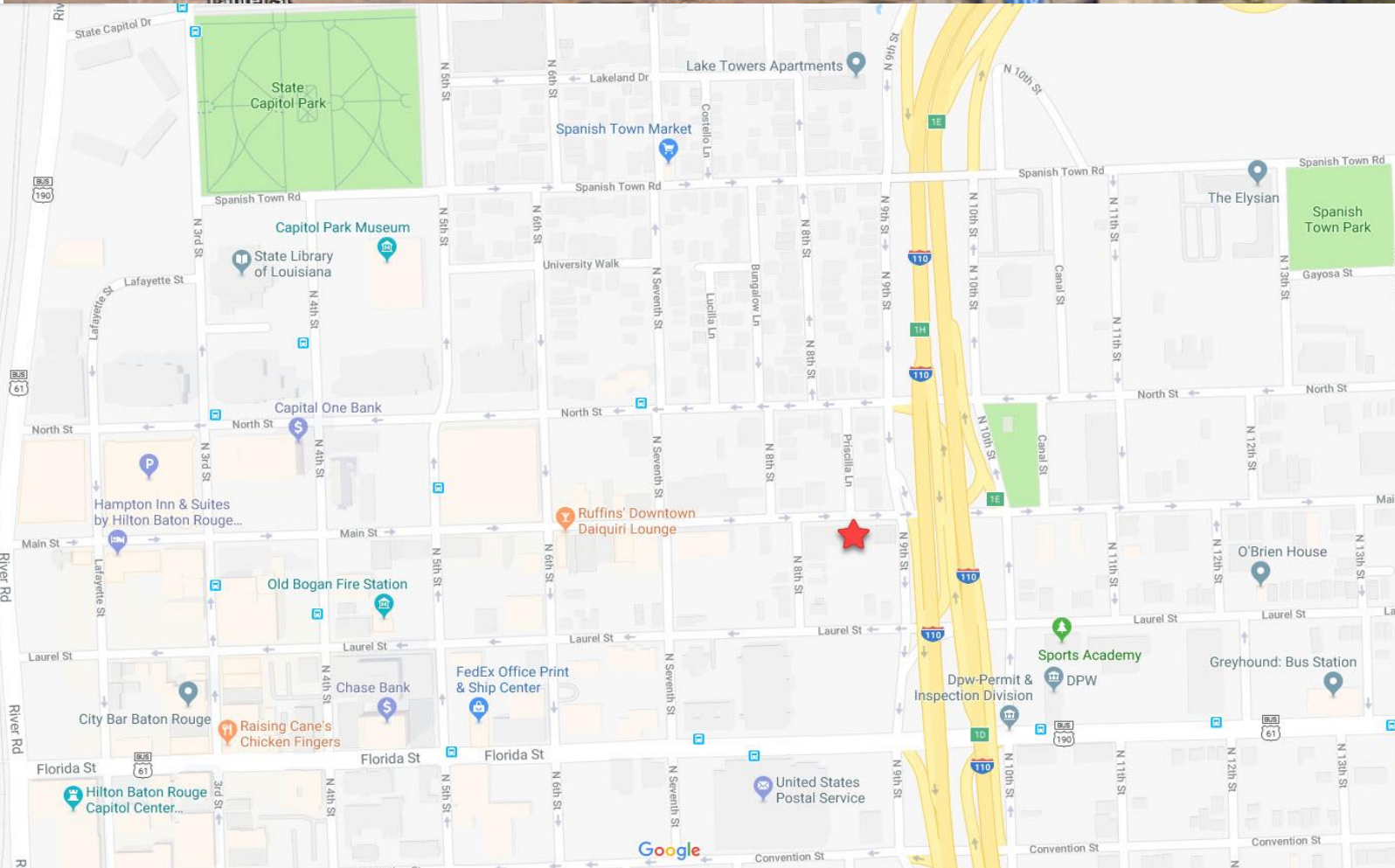
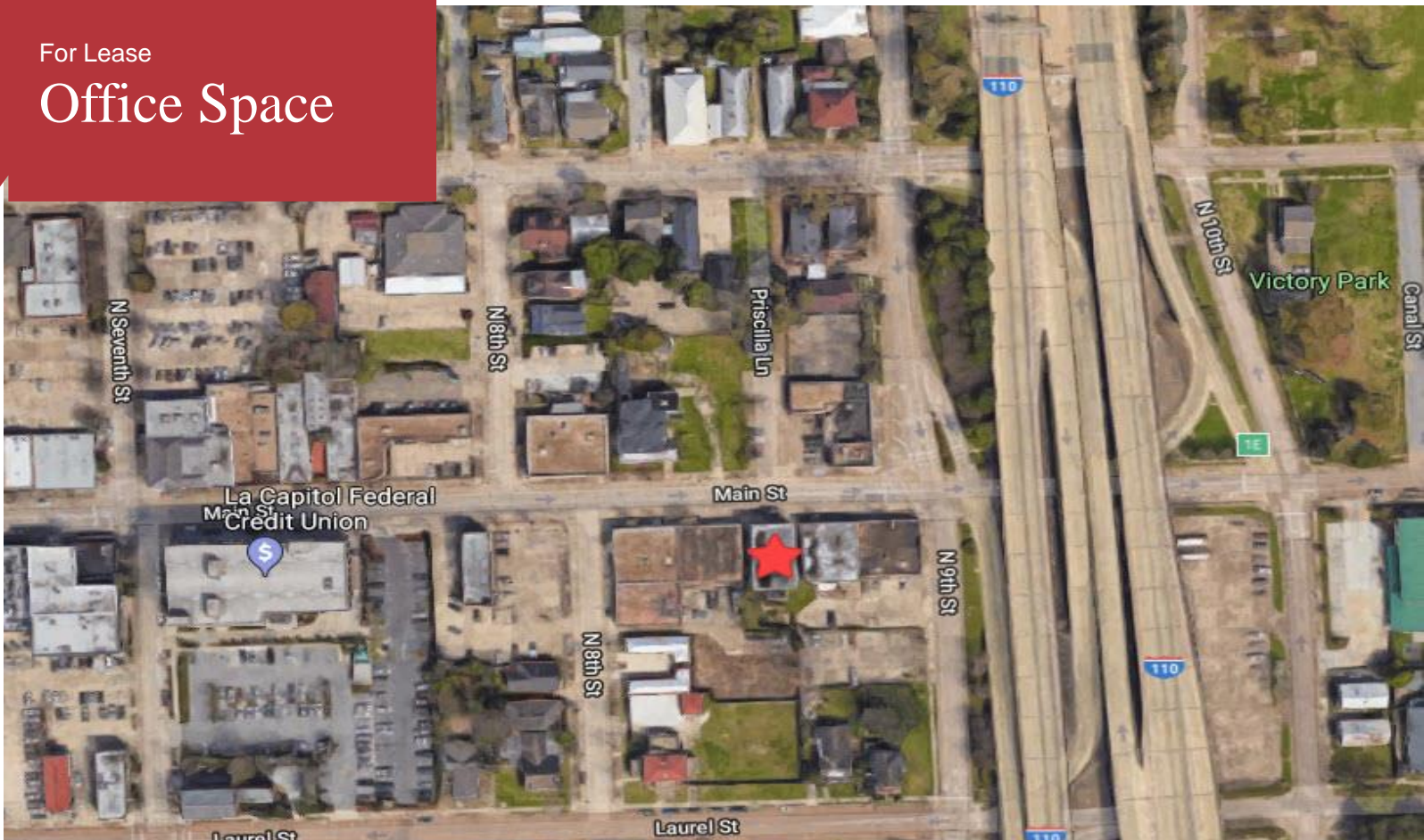
For Lease

# Office Space



For Lease

# Office Space



1700 City Farm Drive,  
Baton Rouge, LA 70806 USA  
225.295.0800  
[www.latterblum.com](http://www.latterblum.com)