

Sublease available at 8131 LBJ

savills

FOR SUBLEASE

8131 Lyndon B Johnson Freeway
Dallas, TX 75251



SPACE PROFILE

2,457 RSF
Total SF

7/31/2028
Term

6.0/1,000
Parking ratio

TBD
Rental rate

Negotiable
Furniture

Immediate
Availability



SPACE PROFILE

270
Suite

2,457 RSF
Total SF

TBD
Rental Rate

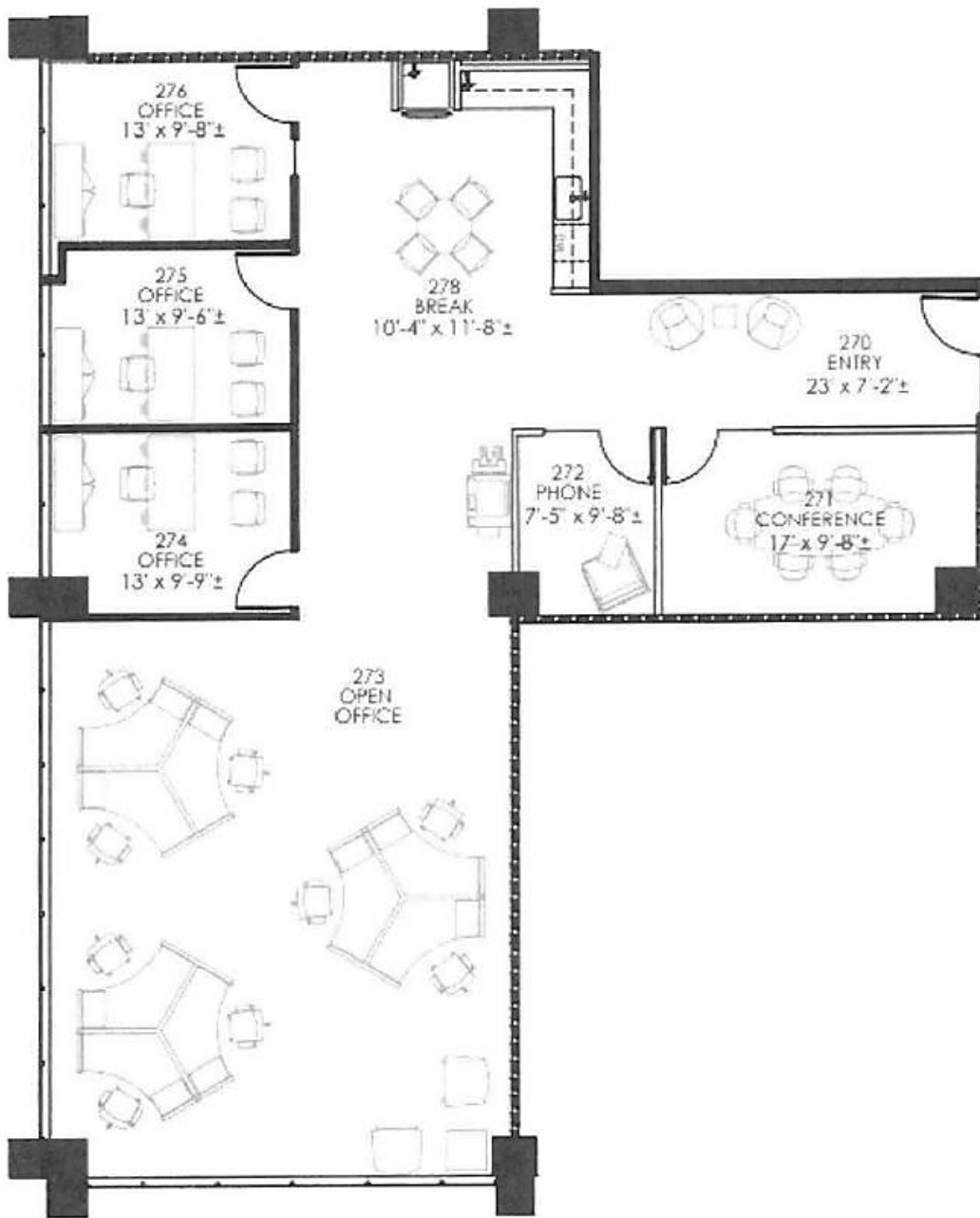
Immediate
Availability

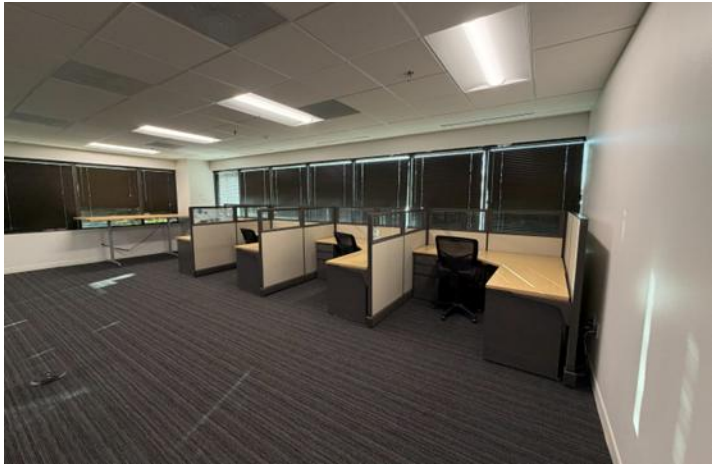
7/31/2028
Term

KEY PROPERTY HIGHLIGHTS

- Class A office building
- Built in 1980, Renovated December 2020
- Building Size: 227,891 SF
- 8 Stories
- Average Floor Plates: 28,486 SF
- Parking Ratio: 6.0/1,000 SF
- Covered garage parking and abundant surface parking
- Grab-n-Go deli
- Shared conferencing facility
- Large training room









Harrison Burt

Corporate Managing Director
214 546 6491
hburt@savills.us

Nate Jackson

Associate Director
214 454 0096
njackson@savills.us



The information contained in this communication has been obtained from a variety of sources believed to be reliable but has not been verified. NO WARRANTY OR REPRESENTATION, EXPRESS OR IMPLIED, IS MADE AS TO THE CONDITION OF THE PROPERTY OR ACCURACY OR COMPLETENESS OF THE INFORMATION CONTAINED HEREIN AND SAME IS SUBMITTED SUBJECT TO ERRORS, OMISSIONS, CHANGE OF PRICE, RENTAL OR OTHER CONDITIONS, WITHDRAWAL WITHOUT NOTICE AND TO ANY SPECIFIC CONDITIONS IMPOSED BY THE PROPERTY OWNER OR LESSOR.