

ARTS DISTRICT

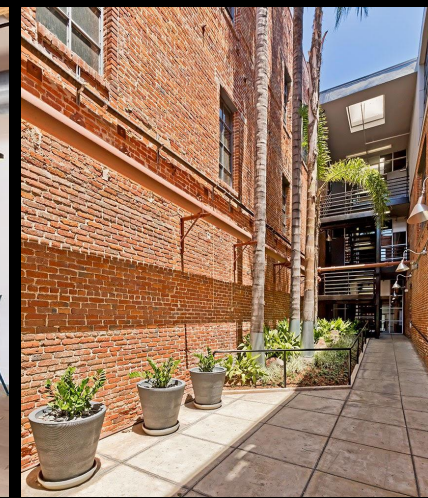
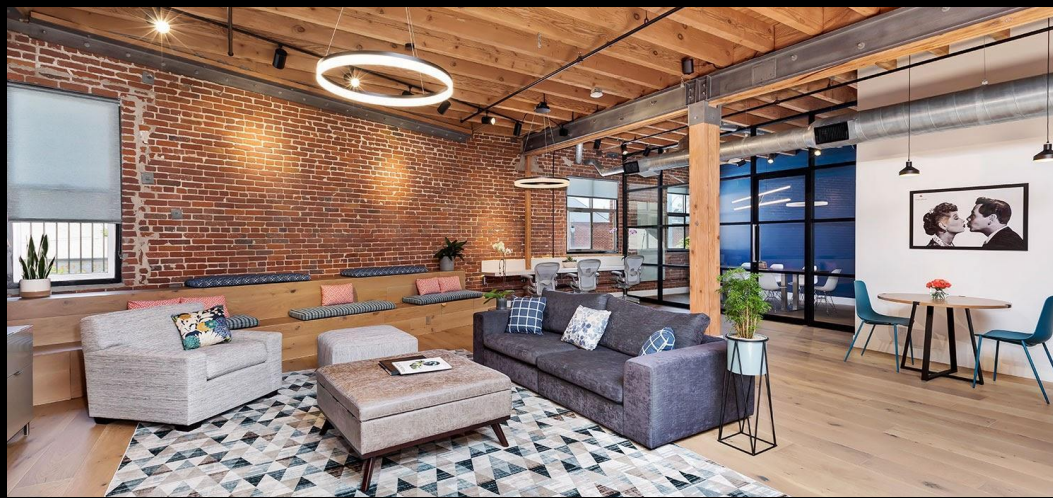
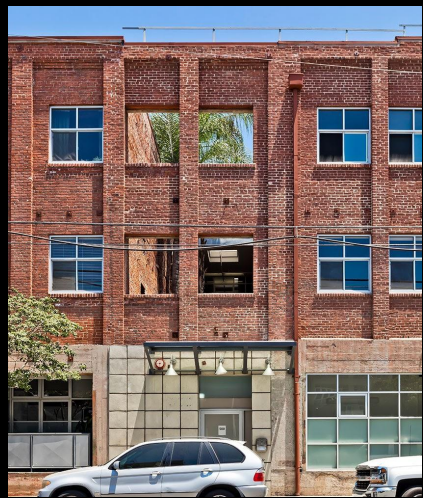
CREATIVE WORKSPACE

500 MOLINO | LOS ANGELES



COLDWELL
BANKER
COMMERCIAL





ABOUT

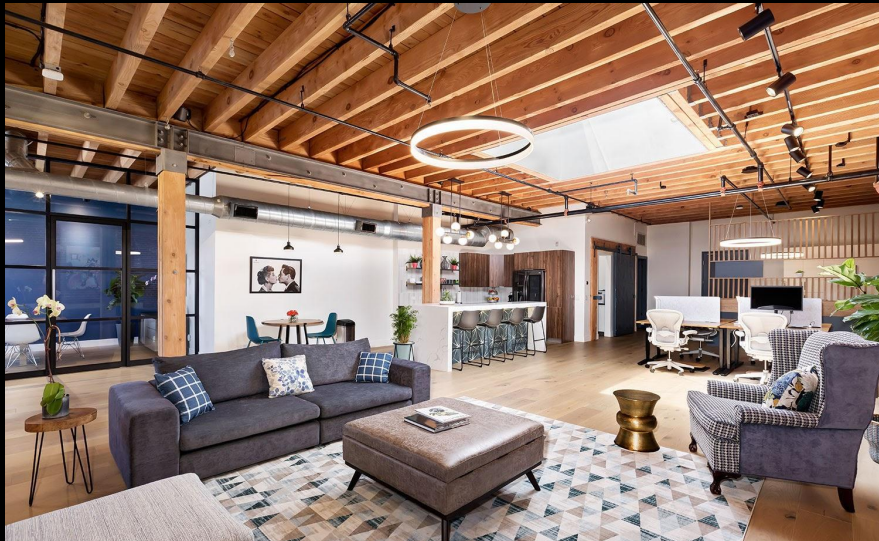
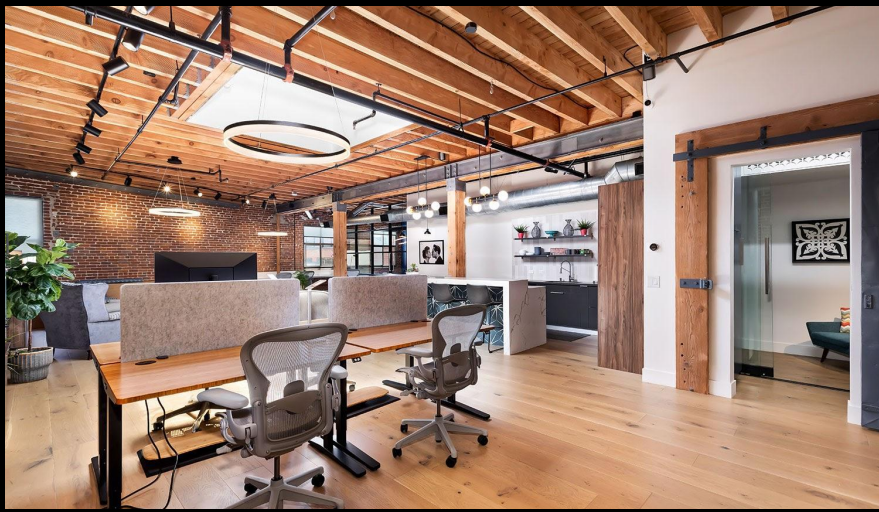
The Molino Lofts has available this architecturally stunning office located in DTLA'S thriving creative community within the Arts District! This office features state of the art modern amenities with a nod to its century old heritage - 14 foot soaring ceilings, exposed piping, heavy timbers and original 1926 brick. Available immediately for \$5,000/Month or \$6,000 Fully Furnished.

Plenty of parking available at Off-Site parking lots nearby.



LOFT STYLE CREATIVE WORKSPACE

UNIT 211



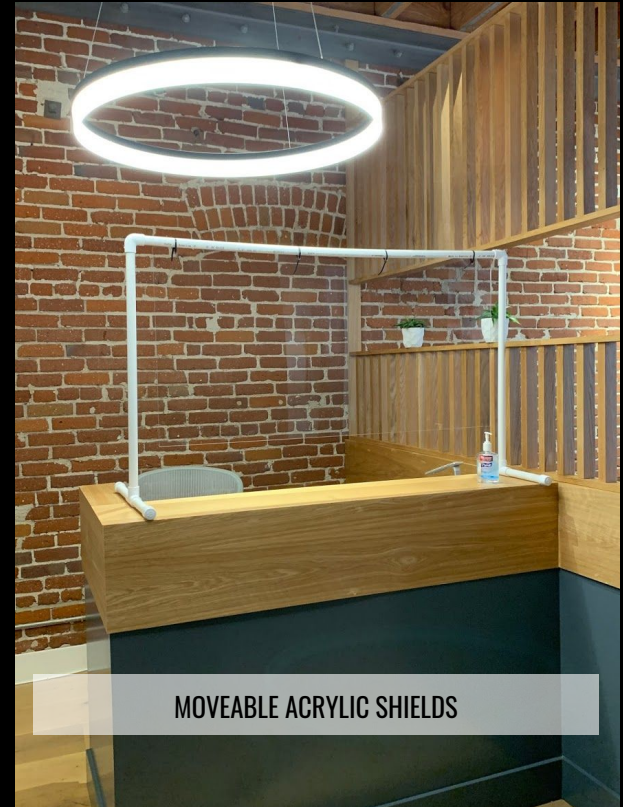
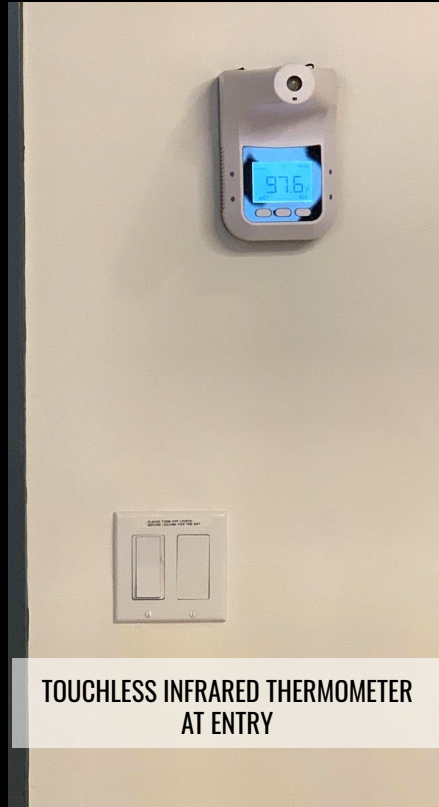
COVID CONSIDERATIONS

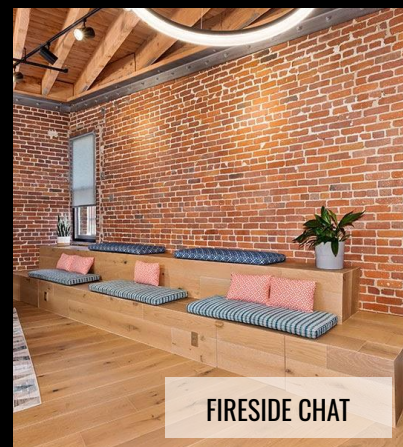
UNIT	211
SIZE	1740 sqft
PRICE/ SQFT	\$2.88 Sqft Modified Gross (\$5,000/Month)
LEASE TERM	Negotiable
PARKING	1 Included + Nearby Parking Lot
AVAILABILITY	Approx \$225/Month/Spot For Additional October 1, 2020

FEATURES

- 14' Soaring Ceilings
- Conference room
- Phone Booth | Meditation Lounge
- Stadium Seating for Fire Side Chats
- Flexible Hot Desks
- Entertainers Kitchen with Quartz Countertops, SS appliances
- Full Suite of Google Home/ Nest Integration: Lock, Thermostat + Smoke Alarm
- Sonos Surround Sound
- Full Bathroom
- Central Heating & Cooling
- Rooftop Pool & Lounge
- Available Fully Furnished - Inquire on Details

COVID: WORKPLACE SAFETY





FIRESIDE CHAT



RECEPTION



LIVING SPACE



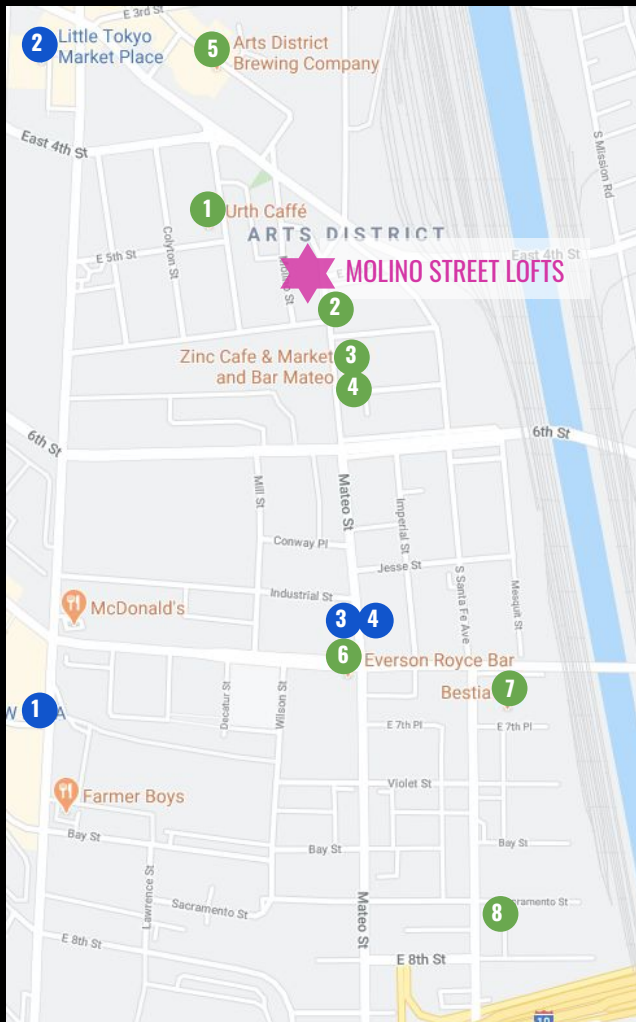
FLEXIBLE HOT DESKS



CONFERENCE ROOM



PHONE BOOTH | MEDITATION



RESTAURANTS | BARS | COFFEE

- 1 Urth Cafe
- 2 Bavel
- 3 Zinc Cafe & Market | Bar Mateo
- 4 Blue Bottle Coffee
- 5 Arts District Brewing Company
- 6 Everson Royce Bar
- 7 Bestia
- 8 Soho Warehouse

ATTRACTIONS

- 1 ROW DTLA
- 2 Little Tokyo
- 3 Two Bit Circus
- 4 Dover Street Market

500 MOLINO STREET #211 | LOS ANGELES

CONTACT

SUSAN LAU

ERIC SACKLER

T: 310-979-3960

C: 213-220-5466



**COLDWELL
BANKER
COMMERCIAL**