

FOR LEASE

1431 McHenry Ave 2nd Floor

Modesto, CA



Thomas R Solomon
209.521.1591
ThomasS@cosol.net
DRE# 01954944

CoSoL Commercial Real Estate
2020 Standiford Avenue
Modesto, CA 95350
(209) 521-1591 Office

The above information while not guaranteed has been secured from sources we deem reliable. However, no warranty or representation express or implied is made as to the accuracy of the information contained herein.

FOR LEASE

1431 McHenry Ave 2nd Floor

Modesto, CA



CoSoL
COMMERCIAL
REAL ESTATE

Rate: \$2.00 psf MG

Year Built: 1991

Parcel: 119.006.028

Parking Stalls: 31 Stalls

Size: ± 2,520 Sq Ft

Use Code: Medical Building



Thomas R Solomon
209.521.1591
ThomasS@cosol.net
DRE# 01954944

CoSoL Commercial Real Estate
2020 Standiford Avenue
Modesto, CA 95350
(209) 521-1591 Office

The above information while not guaranteed has been secured from sources we deem reliable. However, no warranty or representation express or implied is made as to the accuracy of the information contained herein.

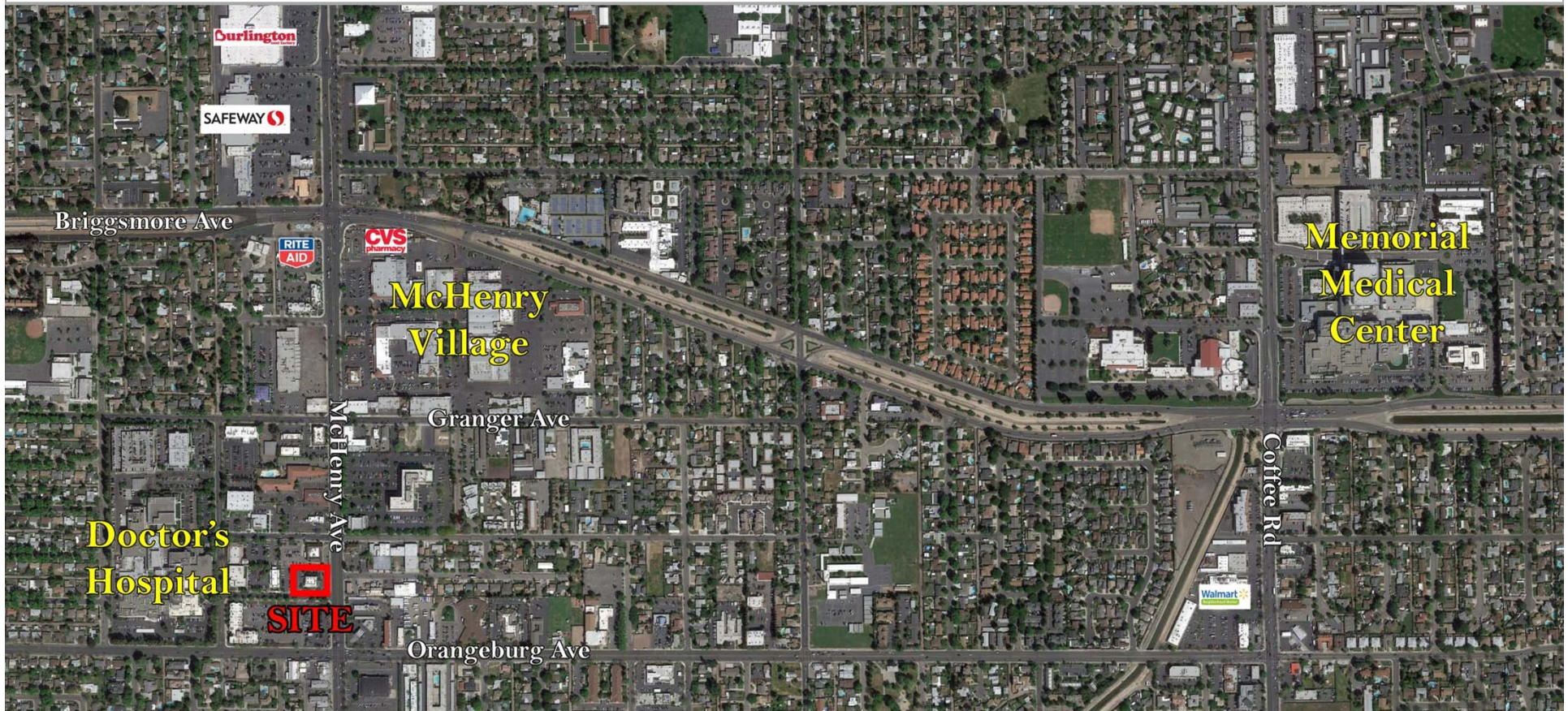
FOR LEASE

1431 McHenry Ave 2nd Floor

Modesto, CA



CoSoL
COMMERCIAL
REAL ESTATE



Thomas R Solomon
209.521.1591
ThomasS@cosol.net
DRE# 01954944

CoSoL Commercial Real Estate
2020 Standiford Avenue
Modesto, CA 95350
(209) 521-1591 Office

The above information while not guaranteed has been secured from sources we deem reliable. However, no warranty or representation express or implied is made as to the accuracy of the information contained herein.

FOR LEASE

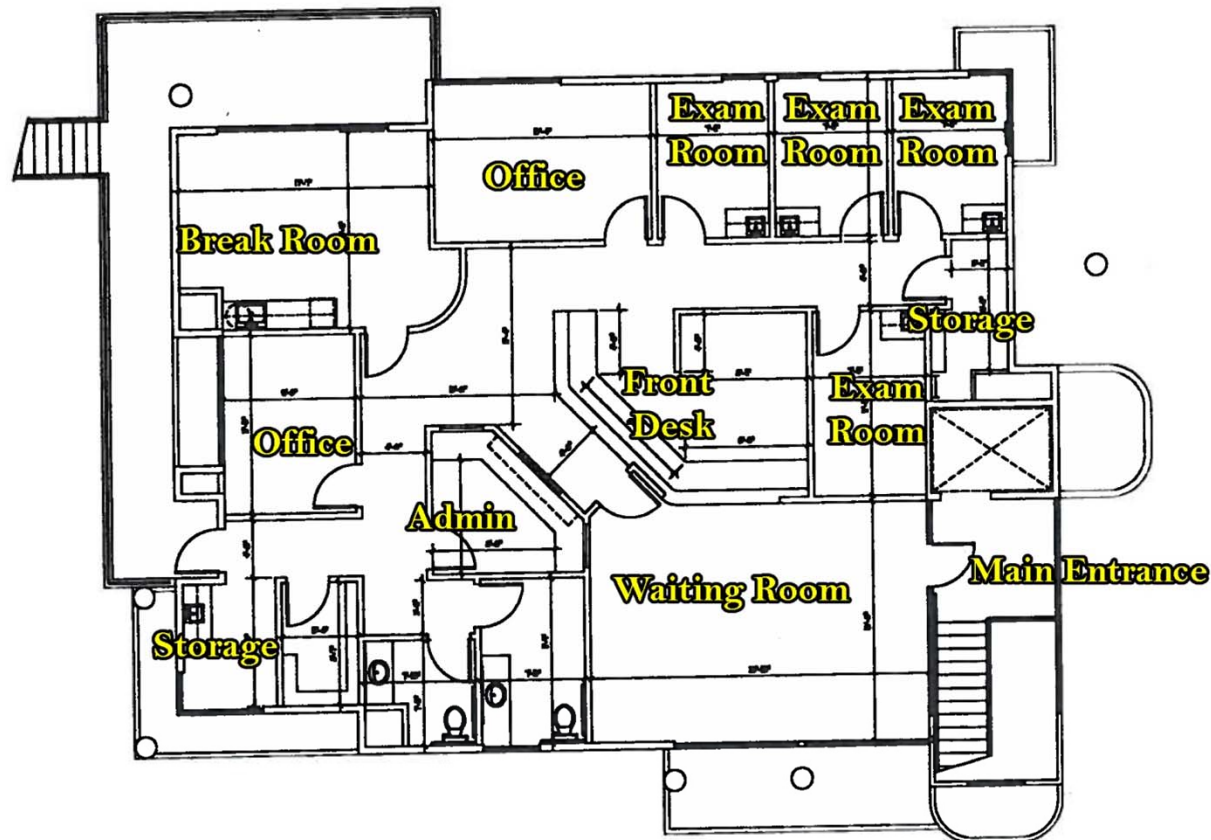
1431 McHenry Ave 2nd Floor

Modesto, CA



CoSoL
COMMERCIAL
REAL ESTATE

Floor Plan



Thomas R Solomon
209.521.1591
ThomasS@cosol.net
DRE# 01954944

CoSoL Commercial Real Estate
2020 Standiford Avenue
Modesto, CA 95350
(209) 521-1591 Office

The above information while not guaranteed has been secured from sources we deem reliable. However, no warranty or representation express or implied is made as to the accuracy of the information contained herein.

FOR LEASE

1431 McHenry Ave 2nd Floor

Modesto, CA



Thomas R Solomon
209.521.1591
ThomasS@cosol.net
DRE# 01954944

CoSoL Commercial Real Estate
2020 Standiford Avenue
Modesto, CA 95350
(209) 521-1591 Office

The above information while not guaranteed has been secured from sources we deem reliable. However, no warranty or representation express or implied is made as to the accuracy of the information contained herein.

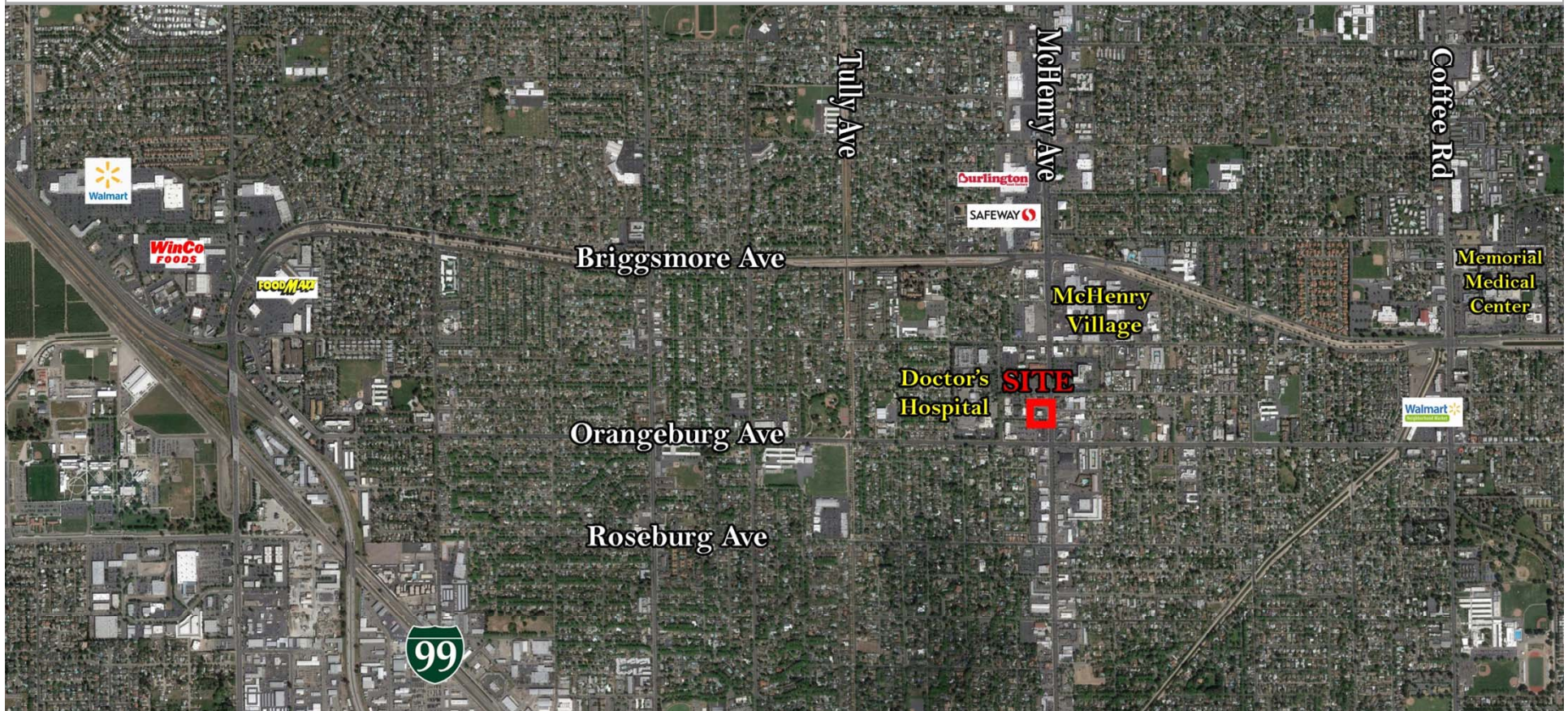
FOR LEASE

1431 McHenry Ave 2nd Floor

Modesto, CA



CoSoL
COMMERCIAL
REAL ESTATE



Thomas R Solomon
209.521.1591
ThomasS@cosol.net
DRE# 01954944

CoSoL Commercial Real Estate
2020 Standiford Avenue
Modesto, CA 95350
(209) 521-1591 Office

The above information while not guaranteed has been secured from sources we deem reliable. However, no warranty or representation express or implied is made as to the accuracy of the information contained herein.