

1005 ALEXANDER CT. UNIT D
CARY, IL 60013

FOR LEASE

MLS # 11727884

February 27, 2023



OFFICE CONDO
1,000 SF

\$1,334./mo (\$16 psf Gross)

DESCRIPTION

Office Condo
1,000 SF

Suite D: 1,000 SF professional office condo located in a multi-tenant office building. Built out with 2 private offices, large conference room with kitchenette, open clerical area and one ADA bath.

Faces Three Oaks Rd. across from Stryker and near the new Mercy Hospital with easy access to Route 14 and Route 31. Close to Holiday Inn, restaurants and Walmart. Monument signage available.

SPECIFICATIONS

Condo Size	1,000 SF
Year Built	2000
HVAC System	GFA / Central Air
Electrical	100 AMP
Sprinklered	No
Washrooms	1 ADA
Ceiling Height	9 FT
Parking	Common
Sewer/Water	City
Zoning	O
CAM & Taxes	Included in Rent
Utilities	Tenant Responsibility
Lease Term	3-5 years
PIN	19-11-153-004

No warranty or representation is made as to the accuracy of the foregoing information. Terms of sale or lease and availability are subject to change or withdrawal without notice. This document is for information purposes only. No offer of sub-agency is being made.

PREMIER
COMMERCIAL REALTY

- Industrial
- Commercial
- Office
- Land
- Business

[CLICK HERE](#)
to view our website

9225 S. IL Route 31
Lake in the Hills, IL 60156
www.PremierCommercialRealty.com
Office: 847-854-2300 | Fax: 847-854-2380

HEATHER SCHWEITZER

Vice President/Managing Broker

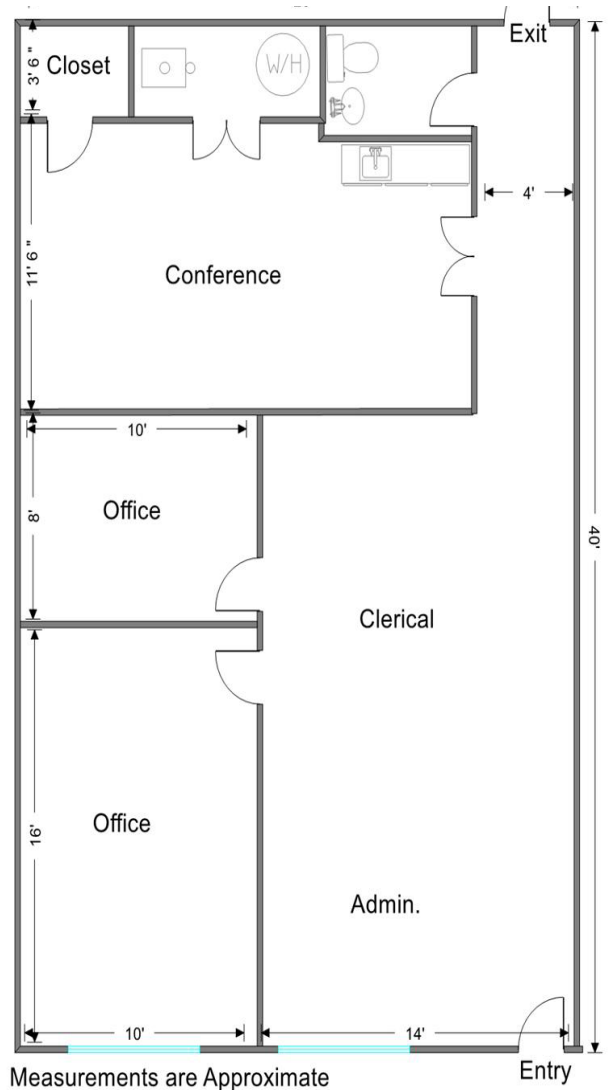
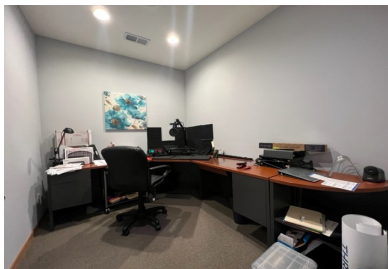
Office: 847-854-2300 Ext 15

Cell: 815-236-9816

HeatherS@PremierCommercialRealty.com

1005 ALEXANDER CT. UNIT D
CARY, IL 60013

FOR LEASE



PREMIER
COMMERCIAL REALTY

- Industrial
- Commercial
- Office
- Land
- Business

[CLICK HERE](#)
to view our website

9225 S. IL Route 31
Lake in the Hills, IL 60156
www.PremierCommercialRealty.com
Office: 847-854-2300 | Fax: 847-854-2380