

6675 SHOOK ROAD

Columbus, Ohio 43217

FLEX/RETAIL SPACE AVAILABLE AT
THE NEW MOBILITY CENTER AT RICKENBACKER



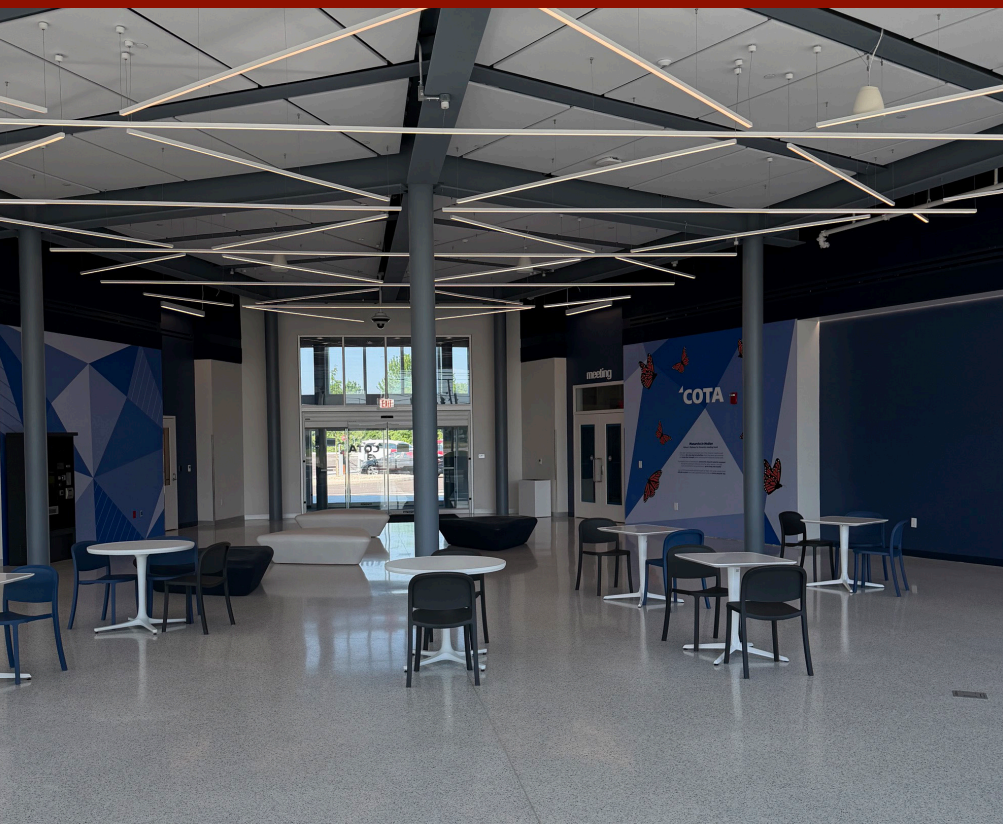
FLEX/RETAIL SPACE FOR LEASE / 4,735 SF





FLEX/RETAIL SPACE AVAILABLE

- **AVAILABLE:** 4,335 RSF
400 RSF
- **USE:** FLEX / RETAIL
- **ASKING RENT:** NEGOTIABLE



COMMENTS

- First generation space
- Outdoor areas and green spaces
- Strong demographics
- 38,000 workers in the Rickenbacker area



MOBILITY CENTER AT RICKENBACKER

Located at London-Groveport and Shook roads, the Mobility Center at Rickenbacker is more than just a transit hub. It's a place that connects you to essential services and helps you take care of what matters most. Serving more than 38,000 workers in the Rickenbacker area, this center will offer:

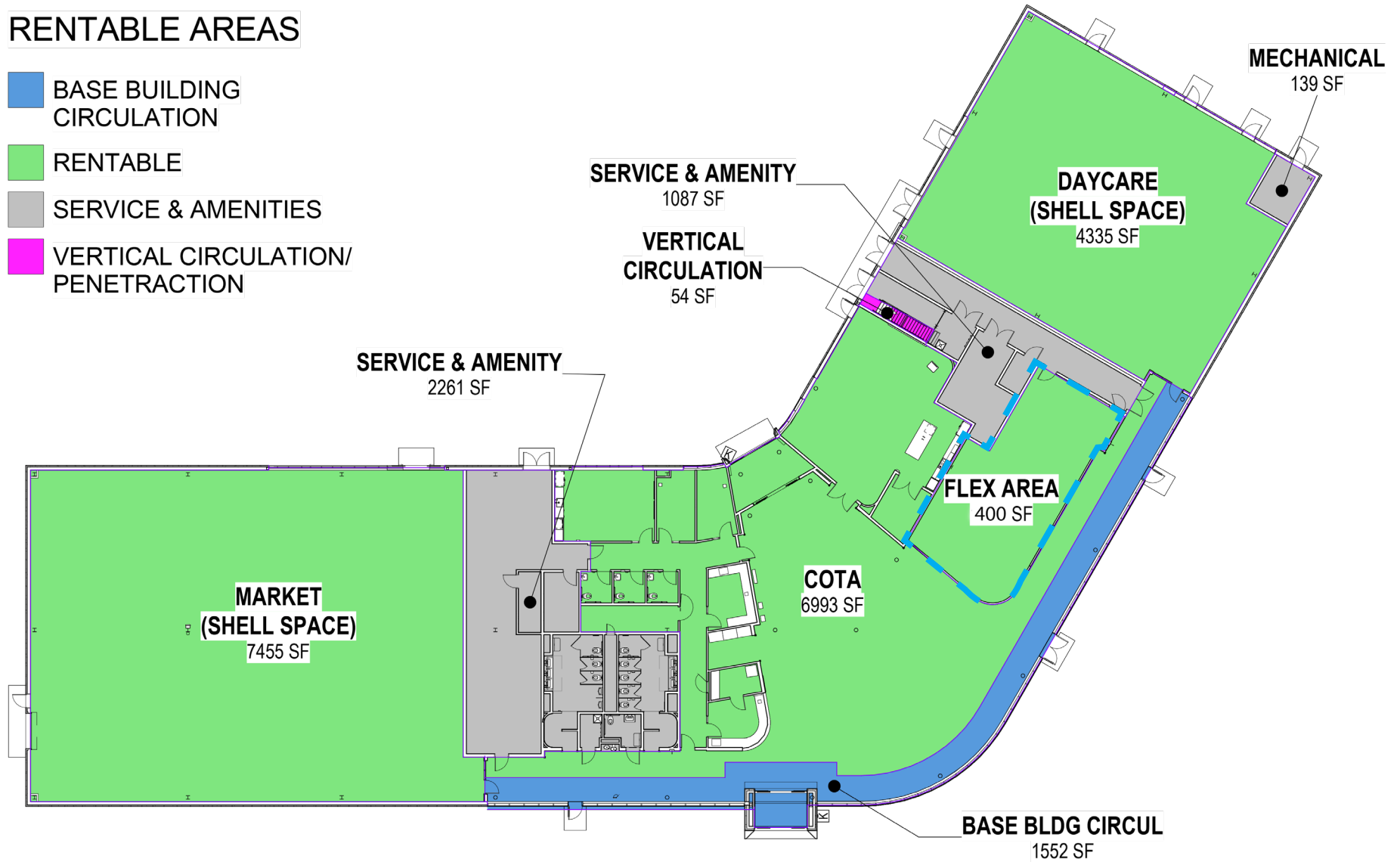
- **7,000 SF MARKET SPECIALIZING IN FRESH VEGETABLES AND MEATS**
- **COMMUNITY SPACES FOR EVENTS & WORKFORCE TRAINING**
- **CONVENIENT & GREEN TRAVEL OPTIONS**
- **ELECTRIC VEHICLE CHARGING STATIONS**
- **COMMUNITY GARDENS INCLUDING BUTTERFLY GARDEN**
- **FOOD TRUCK PATIO**



FLOOR PLAN

RENTABLE AREAS

- BASE BUILDING CIRCULATION
- RENTABLE
- SERVICE & AMENITIES
- VERTICAL CIRCULATION/PENETRATION



AMENITIES

Holiday Inn Express
bp
Arby's
McDonald's
Taco Bell
Arby's

DOLLAR GENERAL
Advance Auto Parts
Arby's

Hardee's
Love's
Godfather's Pizza

SUBWAY Kroger
Starbucks
DQ

SHEETZ

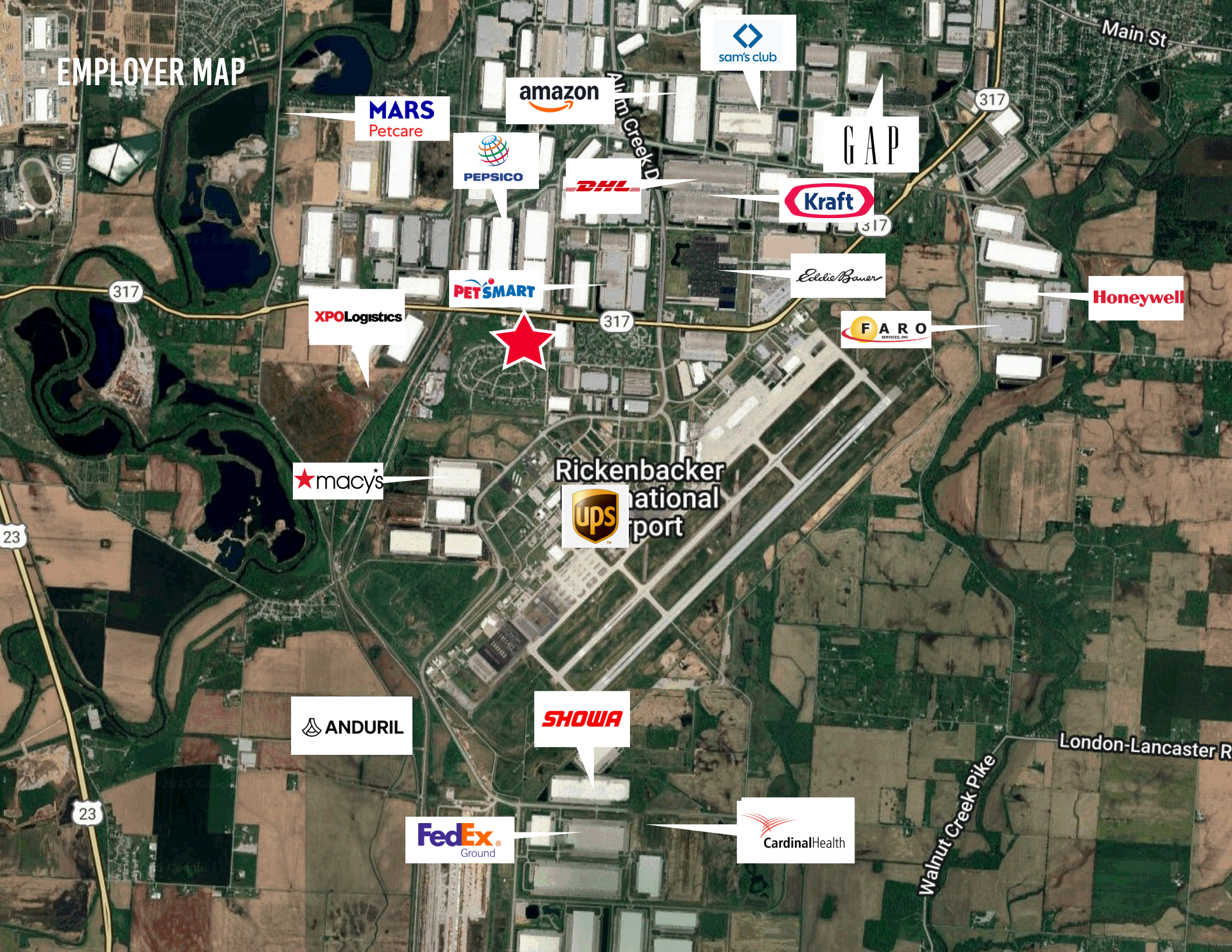
MARATHON SUBWAY



BAYMONT
INN & SUITES



EMPLOYER MAP



MARS
Petcare

amazon

sam's club

PEPSICO

DHL

GAP

Kraft

PETSMART

Eddie Bauer

Honeywell

XPO Logistics

FARO
SERVICES, INC.

★ macys

Rickenbacker
ups
national
port

ANDURIL

SHOWA

FedEx
Ground

CardinalHealth

Main St

317

317

317

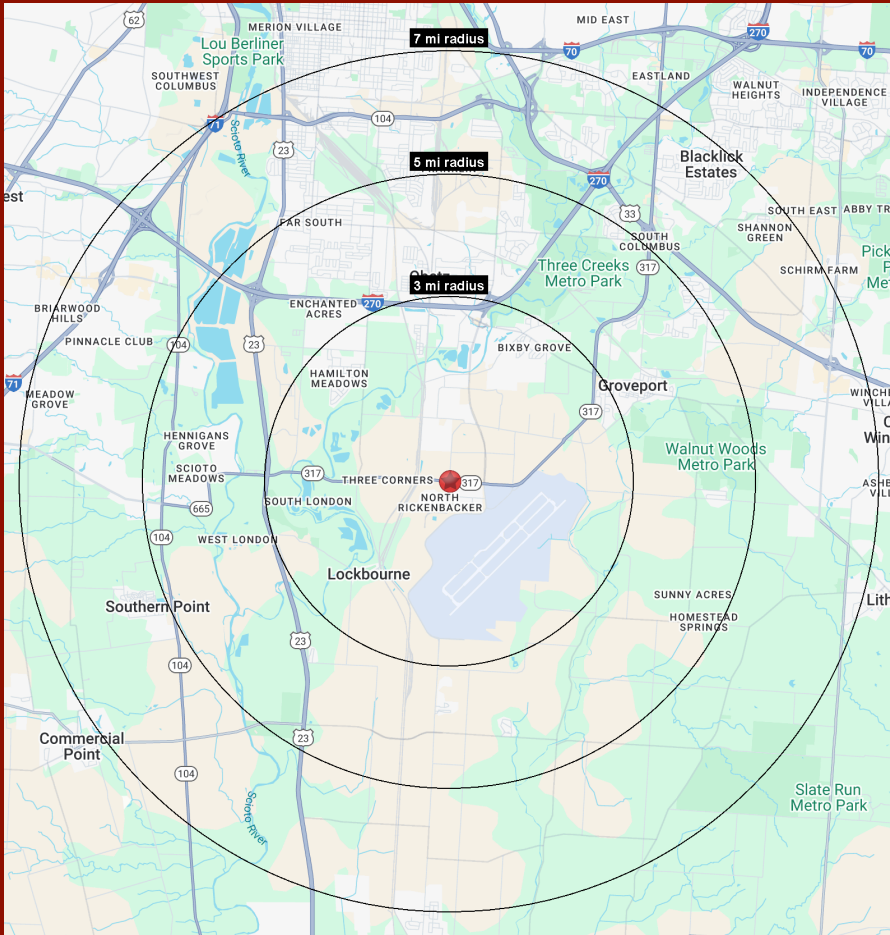
317

23

23

Walnut Creek Pike

London-Lancaster R



NEIGHBORHOOD DEMOGRAPHICS



POPULATION



MEDIAN
HOUSEHOLD INCOME



HOUSEHOLDS

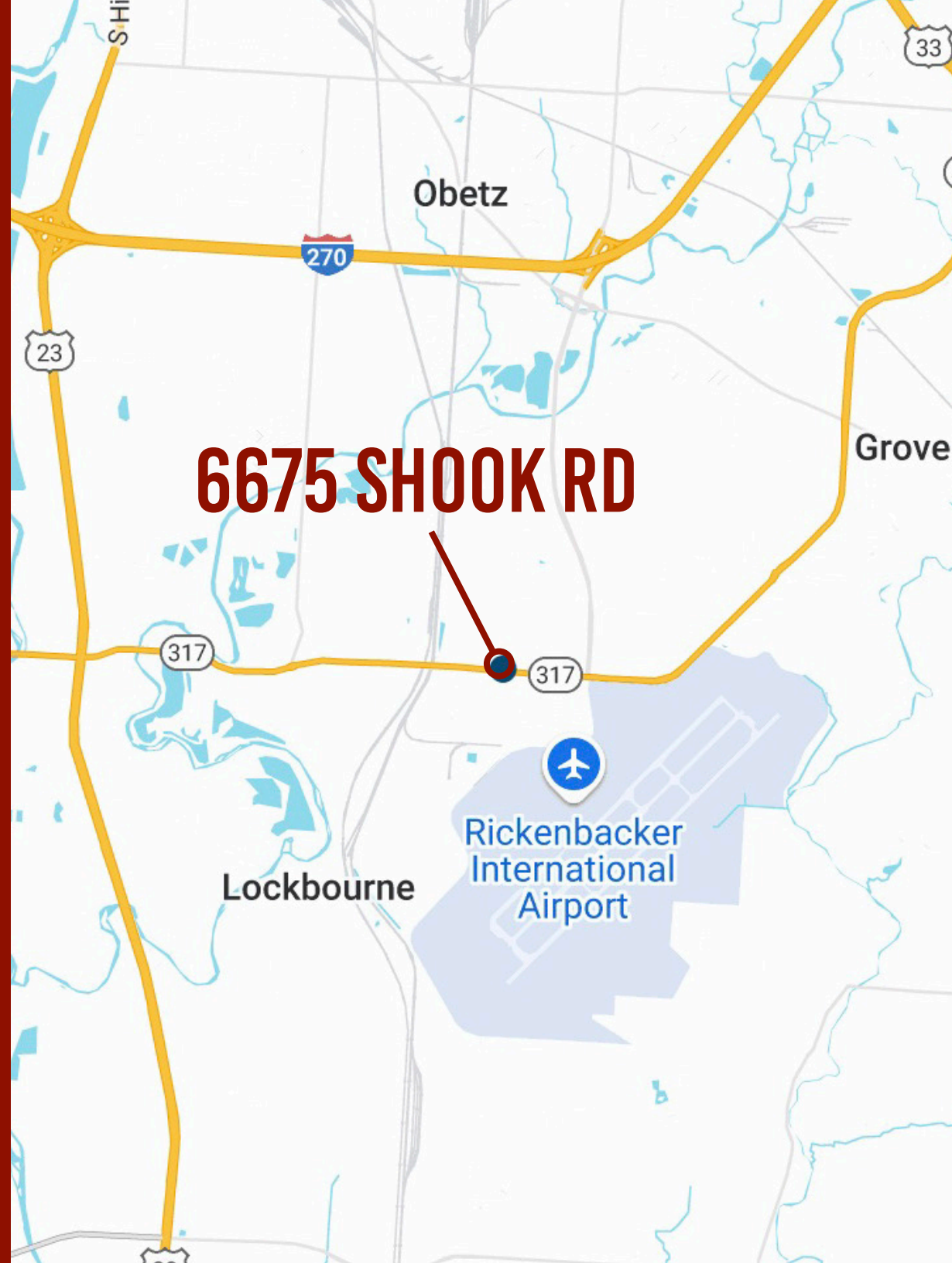
3 Miles	9,383	\$72,055	3,409
5 Miles	42,874	\$72,180	16,223
7 Miles	115,990	\$76,451	45,580

LOCATION

TRAVEL OPTIONS

Whether you rely on COTA, cars, bikes or alternative mobility options, the Mobility Center at Rickenbacker will make your travel easier. The center will be a safe transfer point for COTA's transit vehicles, as well as bikes, scooters, shared rides and even the Groveport Rickenbacker Employee Access Transit (GREAT) shuttle.

But that's not all. The center will also provide electric vehicle charging stations for public use, supporting your commitment to sustainable travel while COTA moves toward its goal of becoming a zero-emissions organization.



LEASING

PLEASE CONTACT US FOR MORE INFORMATION:

BRIAN DOUGLAS

+1 614 827 1908

brian.douglas@cushwake.com

EVAN MILLER

+1 614 827 1715

evan.miller@cushwake.com

ZANE FRY

+1 614 827 1723

zane.fry@cushwake.com



**325 JOHN H MCCONNELL BLVD
SUITE 450
COLUMBUS, OH 43215**

©2024 Cushman & Wakefield. All rights reserved. The information contained in this communication is strictly confidential. This information has been obtained from sources believed to be reliable but has not been verified. NO WARRANTY OR REPRESENTATION, EXPRESS OR IMPLIED, IS MADE AS TO THE CONDITION OF THE PROPERTY (OR PROPERTIES) REFERENCED HEREIN OR AS TO THE ACCURACY OR COMPLETENESS OF THE INFORMATION CONTAINED HEREIN, AND SAME IS SUBMITTED SUBJECT TO ERRORS, OMISSIONS, CHANGE OF PRICE, RENTAL OR OTHER CONDITIONS, WITHDRAWAL WITHOUT NOTICE, AND TO ANY SPECIAL LISTING CONDITIONS IMPOSED BY THE PROPERTY OWNER(S). ANY PROJECTIONS, OPINIONS OR ESTIMATES ARE SUBJECT TO UNCERTAINTY AND DO NOT SIGNIFY CURRENT OR FUTURE PROPERTY PERFORMANCE.

