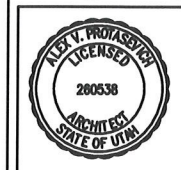


DATE: 28 MARCH 2007
 PROJECT No. 26119
 DRAWN BY: AMP

Arc/Artele
 architecture

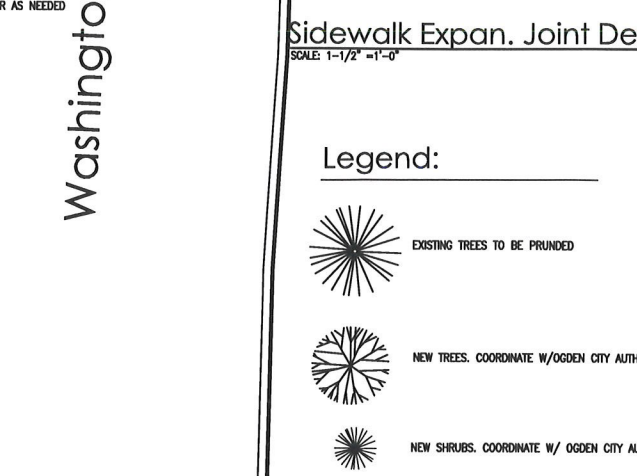
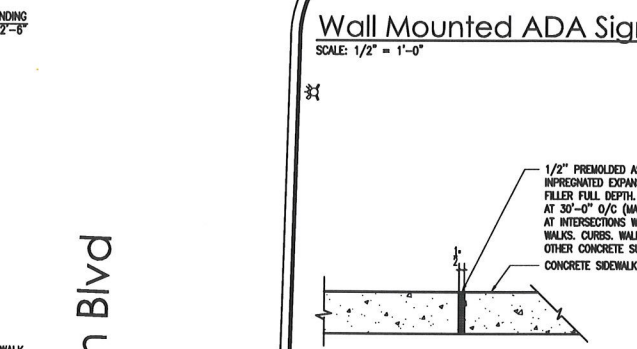
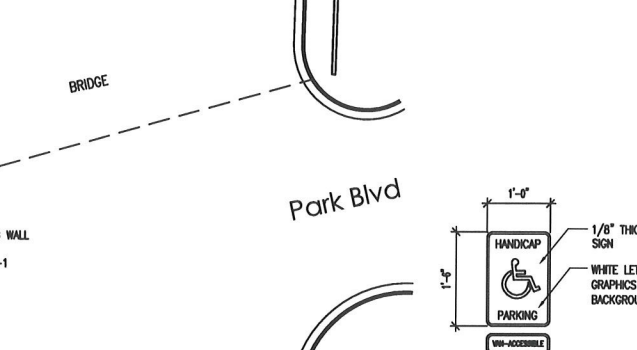
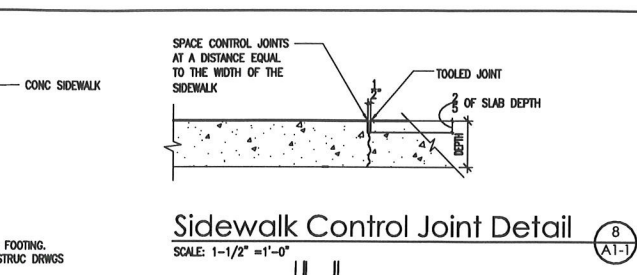
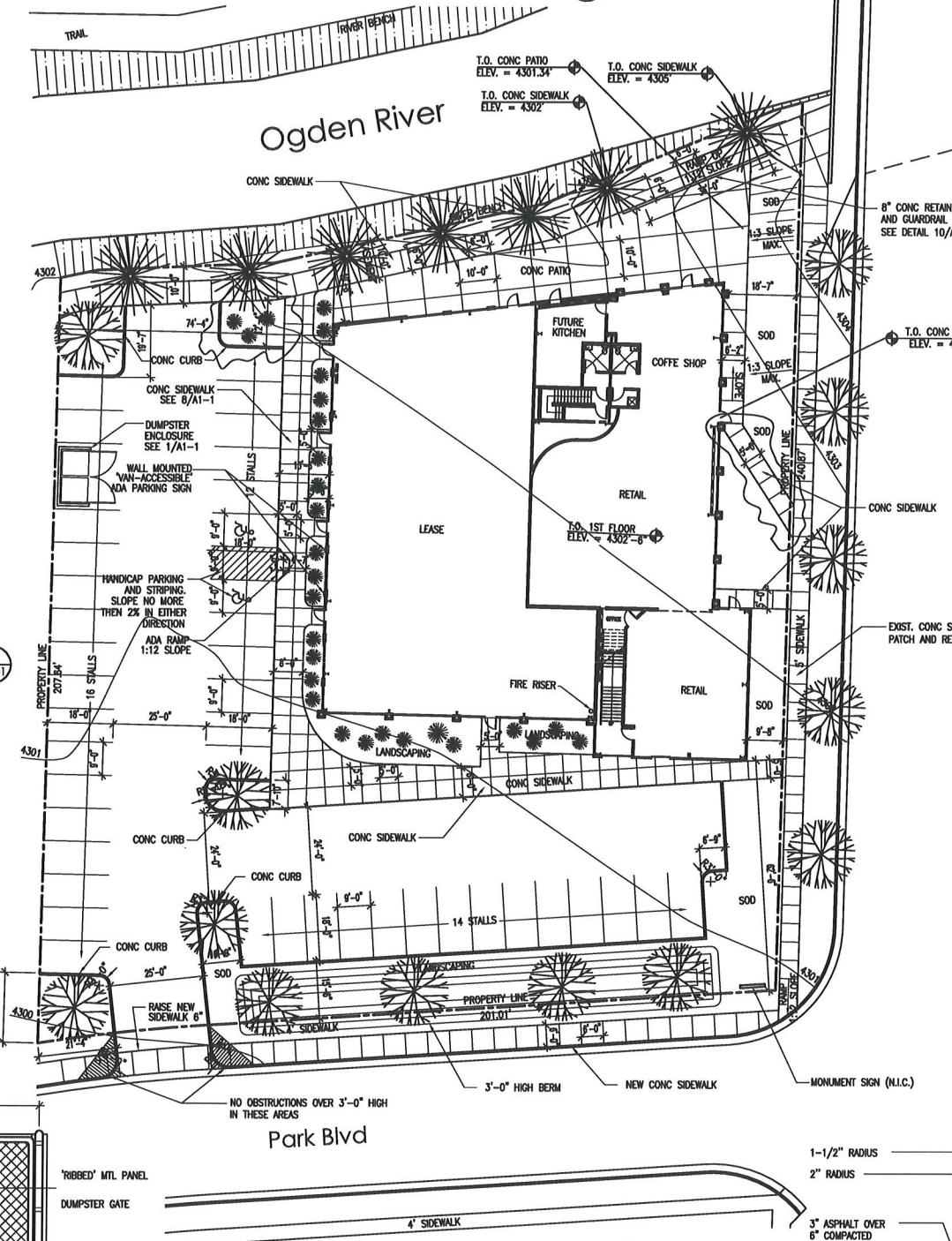
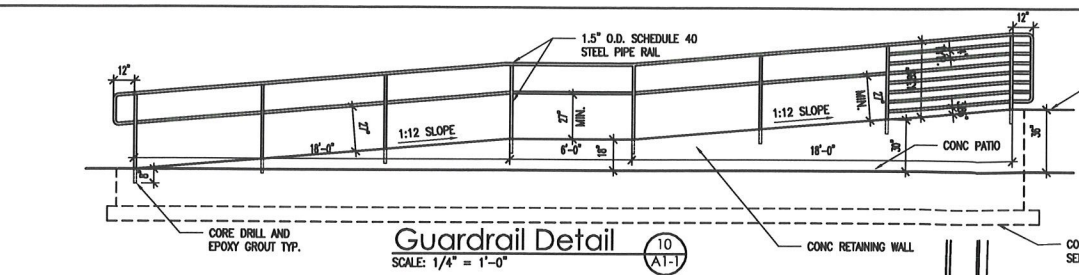
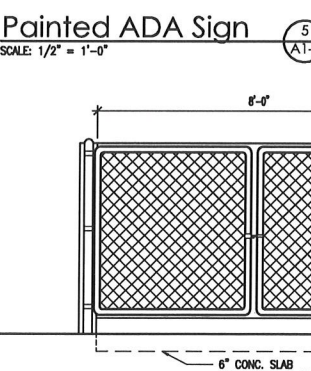
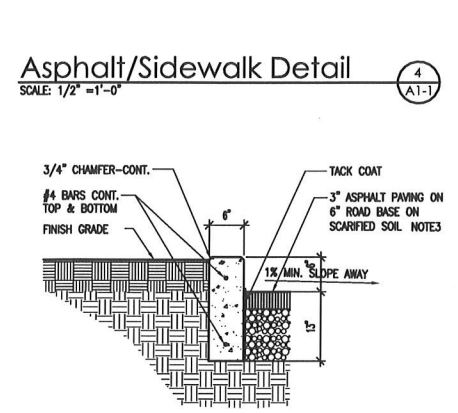
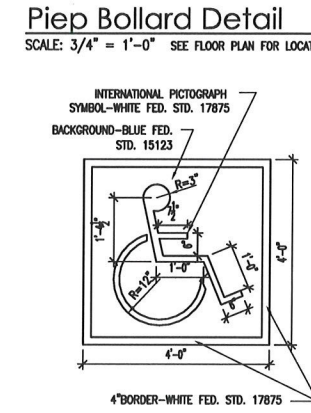
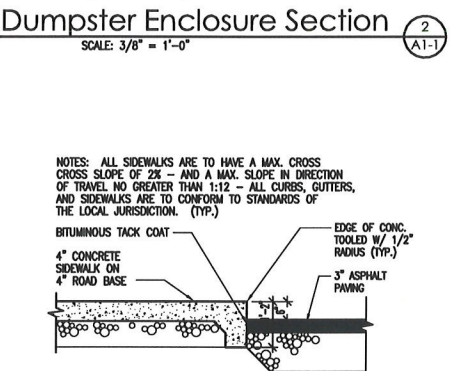
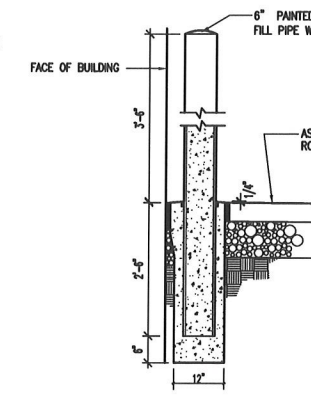
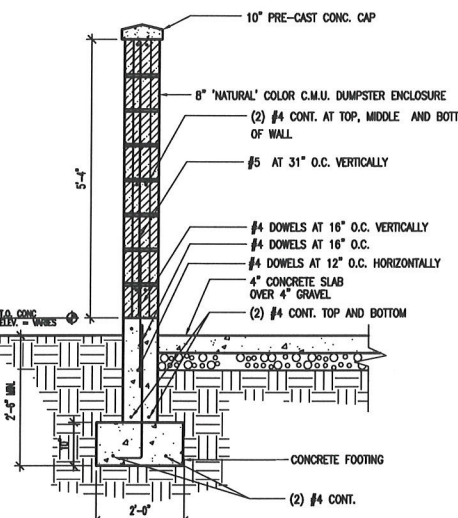
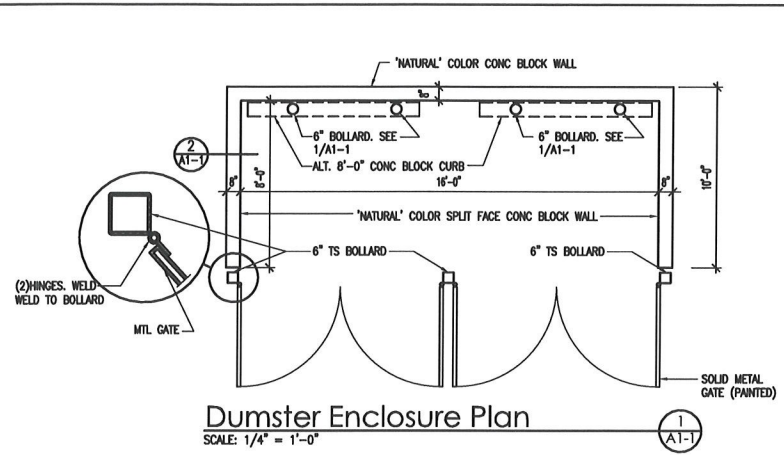
Alex Protosevich
 331 South Rio Grande Street, Suite 306
 Salt Lake City, Utah 84101 Tel: (801) 364-2725



Bingham Cyclery
 Retail Store
 1895 South Washington Avenue
 Ogden, Utah 84401

Architectural
 Site Plan

A1-1



- Legend:**
- EXISTING TREES TO BE PRUNED
 - NEW TREES. COORDINATE W/ OGDEN CITY AUTHORITIES
 - NEW SHRUBS. COORDINATE W/ OGDEN CITY AUTHORITIES

Site Summary:

TOTAL SITE: 43,330 Sq. Ft.
 BUILDING FOOT PRINT: 12,600 Sq. Ft.
 SECOND FLOOR: 2,975 Sq. Ft.
 TOTAL: 15,575 Sq. Ft.

TOTAL LANDSCAPING REQUIRED: 4,330 Sq. Ft. (10%).
 TOTAL LANDSCAPING PROVIDED: 7,971 Sq. Ft. (18.4%)
 ASPHALT AREA: 16,092 Sq. Ft.
 INTERIOR LANDSCAPING REQUIRED: 965 Sq. Ft. (6%)
 INTERIOR LANDSCAPING PROVIDED: 1,837 Sq. Ft. (11.4%)

PARKING STALLS REQUIRED: 42 (1 PER 300 Sq. Ft.)
 PARKING STALLS PROVIDED: 42

A.D. CONSTRUCTION
 CONTRACTORS - ERECTORS PRE-ENGINEERED BUILDINGS

(801) 255-2767
 Fax: (801) 255-4707
 1436 West 9040 South
 West Jordan, Utah 84088

- NOTE:**
- SEE SITE SURVEY DRAWING FOR PROPERTY LEGAL DESCRIPTION
 - SEE CIVIL DRAWINGS FOR GRADING AND DRAINAGE PLAN, CURB AND GUTTER LOCATION AND ELEVATIONS, CATCH BASIN LOCATION
 - SEE DRAWING L1-1 FOR LANDSCAPING AND IRRIGATION PLAN
 - IN CASE OF DUPLICATED SITE DETAILS CIVIL DRAWINGS TAKE PRIORITY