

AVAILABLE FOR LEASE

# 8400-8464 RONDA DRIVE

## CANTON, MICHIGAN



**Completely Renovated**



### PROPERTY FEATURES

- + Three-building complex totaling 125,467 SF
- + Easy access to I-275 at Ann Arbor Road or Ford Road
- + Each building can be leased separately
- + **8464 Ronda Drive - Building A**
  - 38,117 SF with 2,500 SF of office space
  - Heavy power
  - Buss duct
  - One dock door and one grade level door
  - Fire suppression
- + **8464 Ronda Drive - Building B**
  - Features 36,710 SF clear span space
  - Two docks / Three grade level doors
  - New Air Rotation heater
  - Fire suppression
- + **8400 Ronda Drive**
  - Approximately 25,000 SF available for lease
  - Fire suppression
  - Three dock doors with shelters under roof
  - Two grade level doors



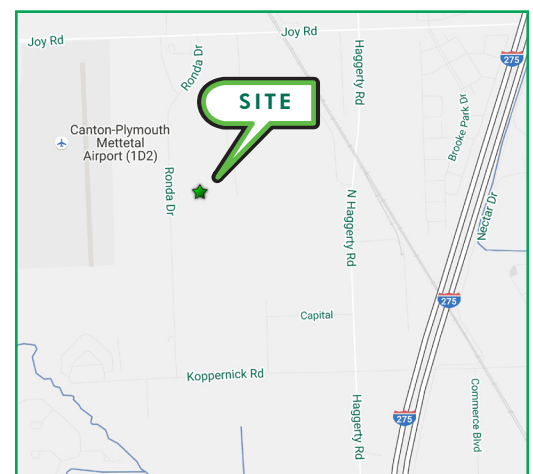
### CONTACT US

**GREGG LOICHINGER**

Senior Associate

+1 248 351 2025

gregg.loichinger@cbre.com



© 2016 CBRE, Inc. The information contained in this document has been obtained from sources believed reliable. While CBRE, Inc. does not doubt its accuracy, CBRE, Inc. has not verified it and makes no guarantee, warranty or representation about it. It is your responsibility to independently confirm its accuracy and completeness. Any projections, opinions, assumptions or estimates used are for example only and do not represent the current or future performance of the property. The value of this transaction to you depends on tax and other factors which should be evaluated by your tax, financial and legal advisors. You and your advisors should conduct a careful, independent investigation of the property to determine to your satisfaction the suitability of the property for your needs.

Photos herein are the property of their respective owners and use of these images without the express written consent of the owner is prohibited.

AVAILABLE FOR LEASE

# 8400-8464 RONDA DRIVE

## CANTON, MICHIGAN

PHOTOS - Building A



PHOTOS - Building B



© 2017 CBRE, Inc. The information contained in this document has been obtained from sources believed reliable. While CBRE, Inc. does not doubt its accuracy, CBRE, Inc. has not verified it and makes no guarantee, warranty or representation about it. It is your responsibility to independently confirm its accuracy and completeness. Any projections, opinions, assumptions or estimates used are for example only and do not represent the current or future performance of the property. The value of this transaction to you depends on tax and other factors which should be evaluated by your tax, financial and legal advisors. You and your advisors should conduct a careful, independent investigation of the property to determine to your satisfaction the suitability of the property for your needs.

Photos herein are the property of their respective owners and use of these images without the express written consent of the owner is prohibited.

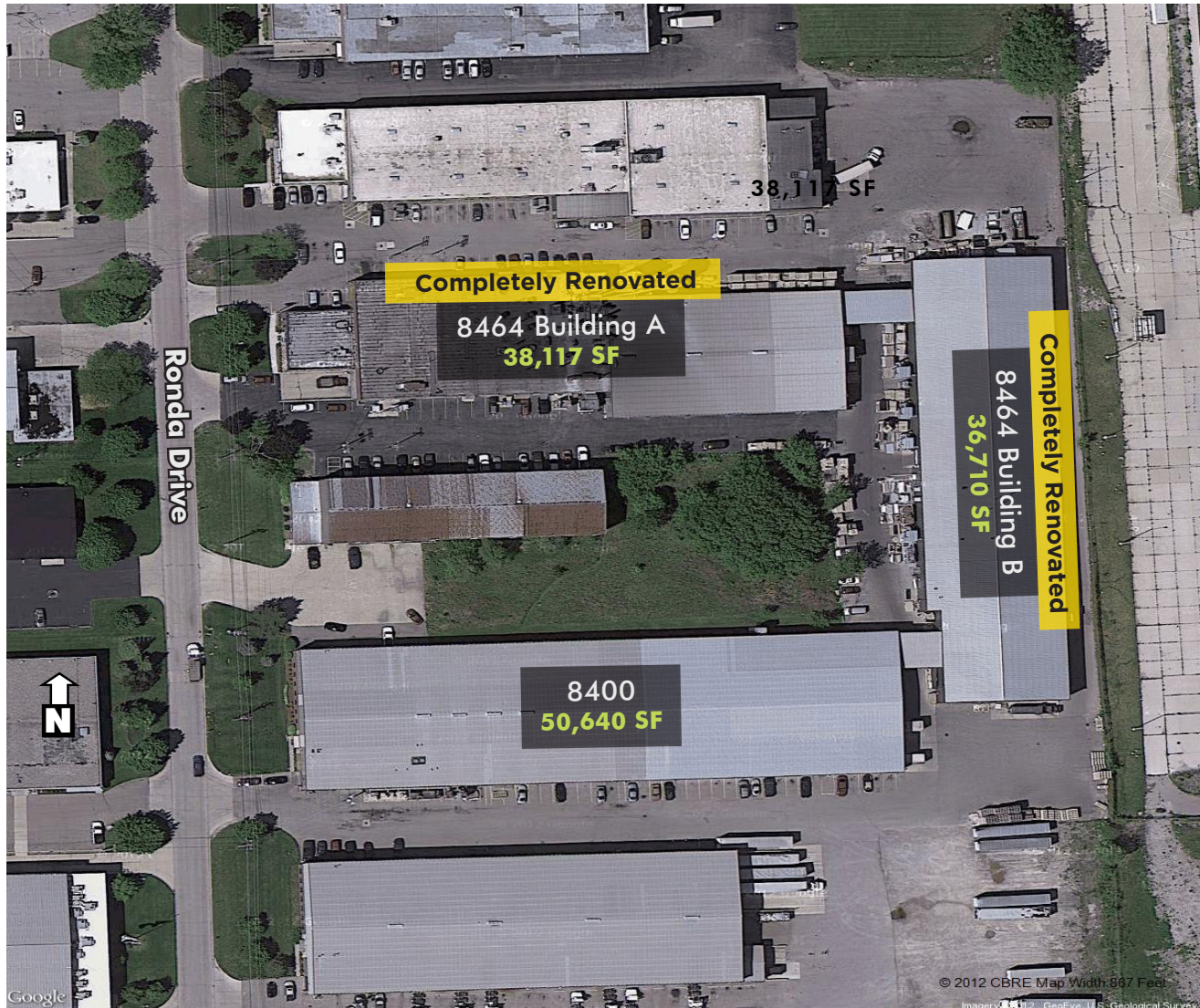


AVAILABLE FOR LEASE

# 8400-8464 RONDA DRIVE

CANTON, MICHIGAN

## AERIAL



### GREGG LOICHINGER

Senior Associate

+1 248 351 2025

gregg.loichinger@cbre.com

© 2017 CBRE, Inc. The information contained in this document has been obtained from sources believed reliable. While CBRE, Inc. does not doubt its accuracy, CBRE, Inc. has not verified it and makes no guarantee, warranty or representation about it. It is your responsibility to independently confirm its accuracy and completeness. Any projections, opinions, assumptions or estimates used are for example only and do not represent the current or future performance of the property. The value of this transaction to you depends on tax and other factors which should be evaluated by your tax, financial and legal advisors. You and your advisors should conduct a careful, independent investigation of the property to determine to your satisfaction the suitability of the property for your needs.

Photos herein are the property of their respective owners and use of these images without the express written consent of the owner is prohibited.



## PROPERTY OVERVIEW

- + County: Wayne
- + Zoning: Industrial
- + Total Building Size: 125,467 SF
- + Divisible (Min/Max): By Building Only
- + Lease Rate: \$4.75 PSF NNN
- + Taxes: \$0.32 psf (2015)



## LAND & STRUCTURES

Year Built:	1977	Parking:	60 Spaces
Total Available:	99,824 SF	Heat Type:	Radiant
Available Office:	Up to 4,000 SF	Power:	8464 "A"-35A, 8464 "B"-50KVA
Available Shop:	99,824 SF	Security System:	Available
Divisible:	By building only	Lighting:	Metal Halide
Acreage	Approximately 5.5. acres	Restrooms:	Multiple
Construction:	Block and steel	Grade Level Doors:	Four (4)
Stories:	Single	Truckwells / Docks:	Three (3)
Floor Drains:	Yes	Cranes:	None
Ceiling Height:	Up to 26'	Elevator:	None
Sprinklers:	Yes	Rail:	No



## COMMENTS

- + Three buildings available totaling 99,824 SF
- + 5.5 acres
- + Easy Access to I-275 at Ann Arbor Road or Ford Road
- + Each building can be leased separately



## CONTACT US

### GREGG LOICHINGER

Senior Associate  
+1 248 351 2025  
gregg.loichinger@cbre.com

CBRE, Inc. | LICENSED REAL ESTATE BROKER

We obtained the information above from sources we believe to be reliable. However, we have not verified its accuracy and make no guarantee, warranty or representation about it. It is submitted subject to the possibility of errors, omissions, change of price, rental or other conditions, prior sale, lease or financing, or withdrawal without notice. We include projections, opinions, assumptions or estimates for example only, and they may not represent current or future performance of the property. You and your tax and legal advisors should conduct your own investigation of the property and transaction.