

White City



The ambitious regeneration of White City includes Imperial College West, Westfield London, Berkeley St James, Television Centre and White City Place.

Together, they are implementing a shared vision across 112 acres, including over 2m sq ft of offices, up to 5,000 high quality homes, new public squares and parks, an enhanced world-class shopping offer and a hub for academia, innovation and start-ups.

Local businesses within the White City area include Stella McCartney, Mario Testino, Net-A-Porter, BBC and Fox amongst others.

In time White City will deliver:

Offices

– 2.2 million sq ft

Retail and Leisure

- 2.3 million sq ft
- Westfield London, 400 stores including John Lewis
- Soho House hotel and members' club
- Cinema and 30 acres of public space

Residential

– 4,730 homes

Education

- 25-acre site with state of the art education facilities
- 211,220 sq ft of offices and 600 new homes

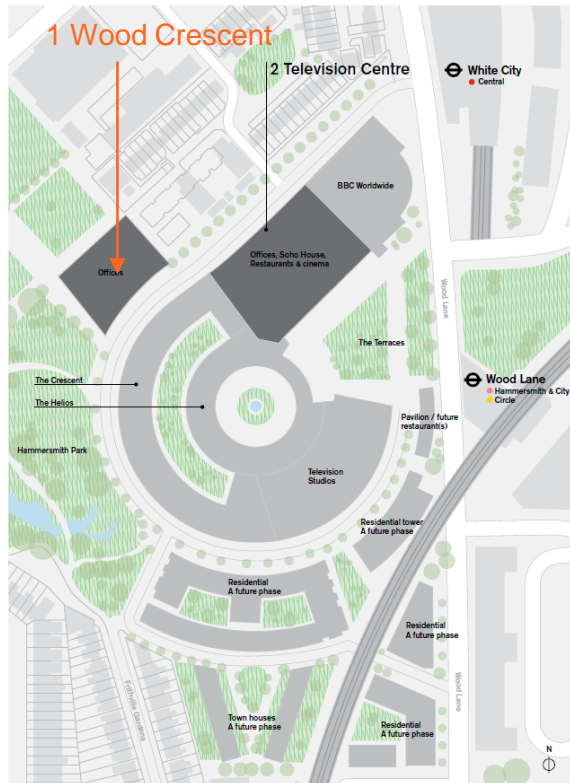
Television Studios

– Three (22,500 sq ft)

1 Wood Crescent

1 Wood Crescent is a standalone building which will sit proudly overlooking the rest of Television Centre on the Southeast corner of Hammersmith Park. The nine storey building designed by renowned architects Duggan Morris will provide ground floor retail with 9 upper floors of office accommodation with excellent sightlines of the local area and London.

The self contained building has been designed to offer external space by way of Loggia's and Terraces on a number of floors to connect the accommodation with the surrounding public realm.



- Planning consent secured
- Site cleared
- Projected construction period of 24 months with 12 months of pre-construction
- Part of the historic Television Centre development
- Within 2 minutes walk of the Central, Circle and Hammersmith & City Underground lines

1 Wood Crescent

Floor	Area (sq ft)	Terrace/Loggia (sq ft)
Ninth	4,528	–
Eighth	7,047	429
Seventh	7,072	5,420
Sixth	13,404	–
Fifth	13,404	715
Fourth	14,132	955
Third	14,810	–
Second	14,810	360
First	13,461	–
Ground floor	506	–
Reception	2,268	–
Retail	4,754	–
Basement	3,333	–
Office Total	108,775	7,879
Retail Total	4,754	–

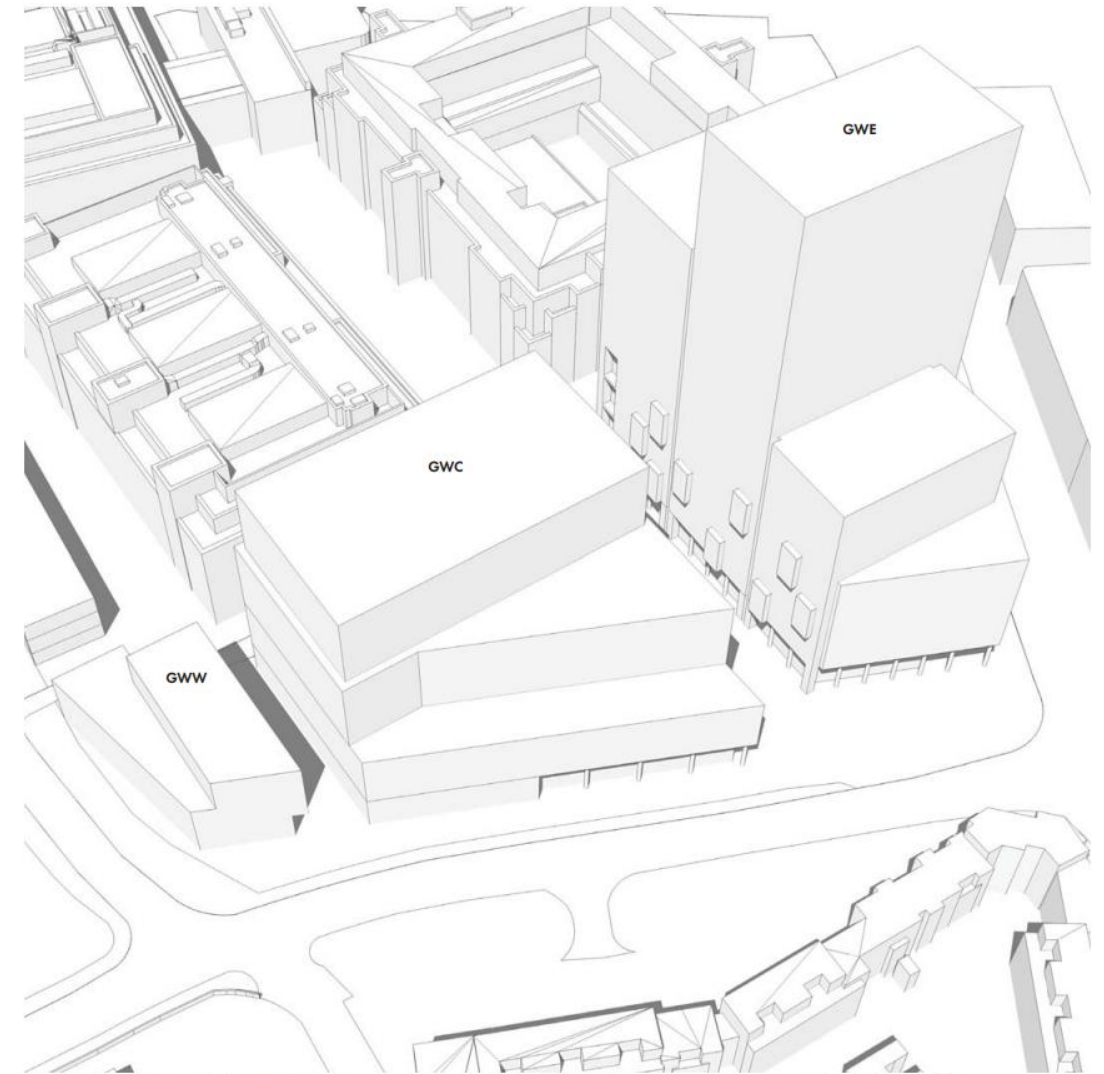
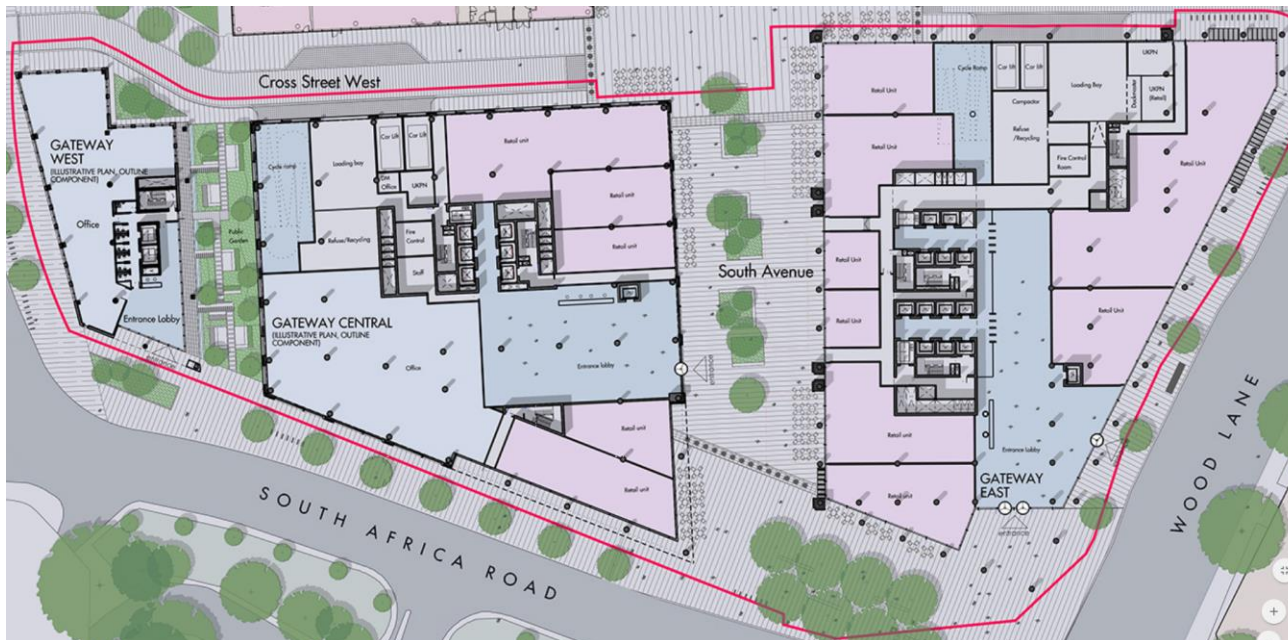
Typical upper floor



The Gateway

The Gateway scheme presents the next stage in the regeneration of the former BBC Media Village to become the new White City Place. This scheme will result in the comprehensive development of three new office buildings with supporting retail uses at ground floor level.

- Planning application submitted, outcome expect in October 2017
- Cleared site
- Adjacent to Imperial Colleges, White City campus

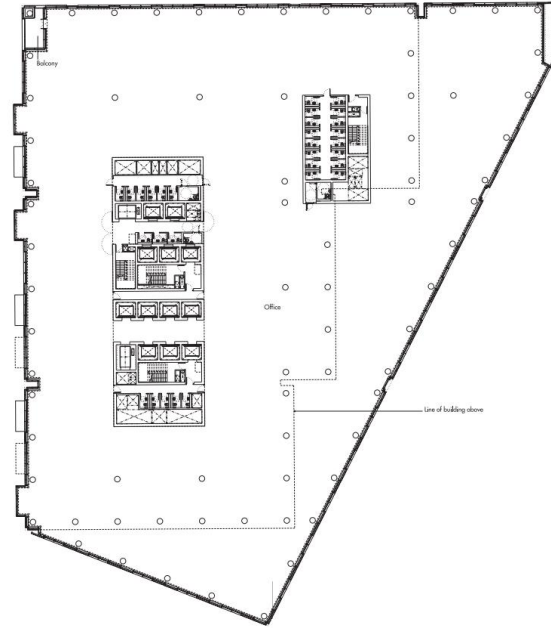


The illustrative Gateway Central massing in the context of the detailed and illustrative proposals for Gateway East and Gateway West

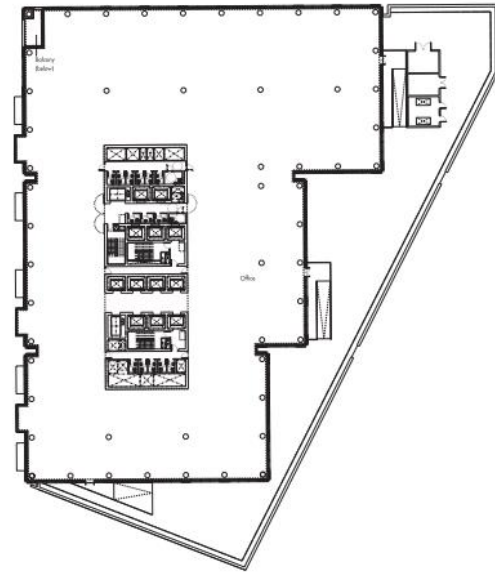
Gateway East

Projected construction period of 30 months with 12 months pre-construction

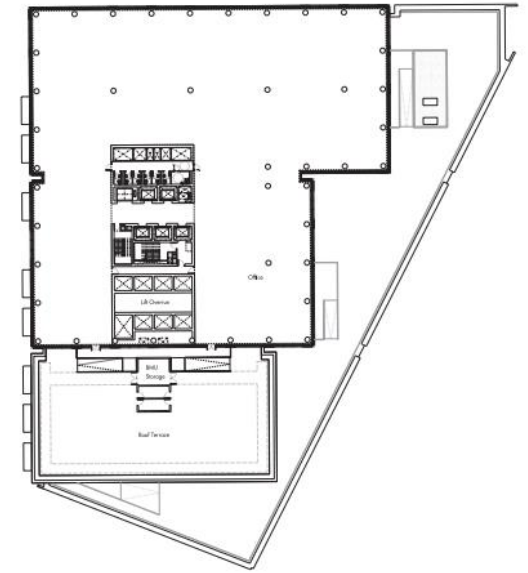
Floor	Area (Sq Ft)
20	9,117
19	9,117
18	9,117
17	9,117
16	9,117
15	9,117
14	23,713
13	23,713
12	23,713
11	22,927
10	30,322
9	30,322
8	30,322
7	30,322
6	30,128
5	42,345
4	42,345
3	42,345
2	42,345
1	42,345
G	
Office	511,909



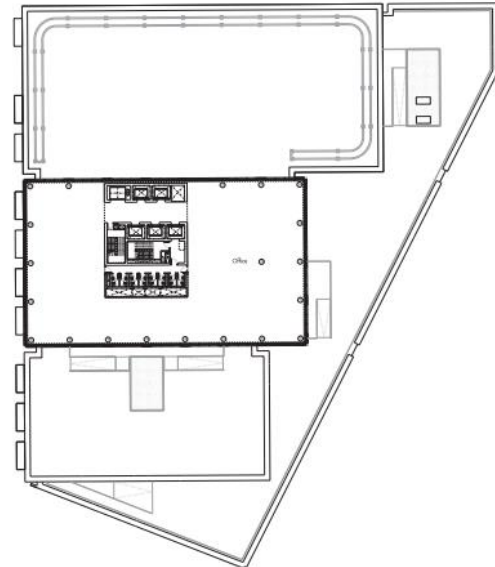
Podium: Level 01 to level 05



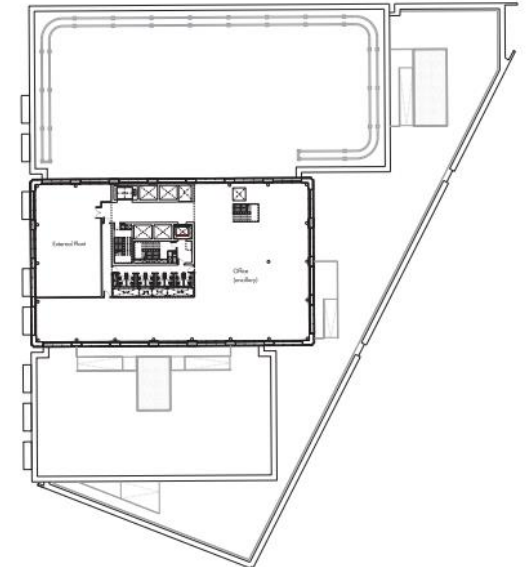
Tower: Level 06 to level 10 (balcony below on L6 only)



Tower: Level 11 to level 14



Tower: Level 15 to level 20



Tower: Level 21 to level 22

Gateway East

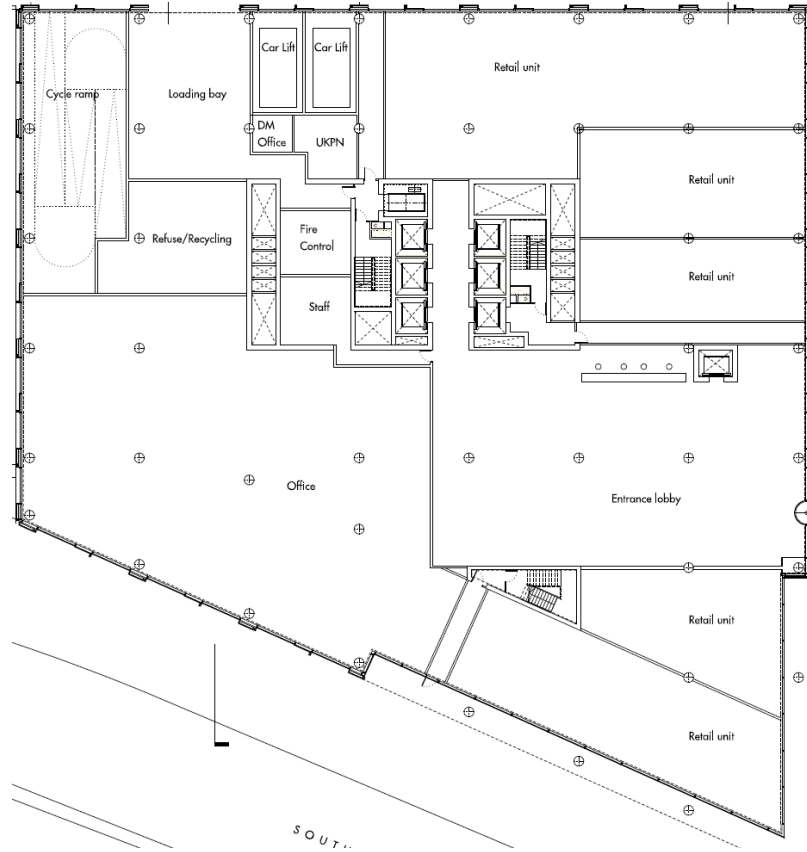


Gateway Central

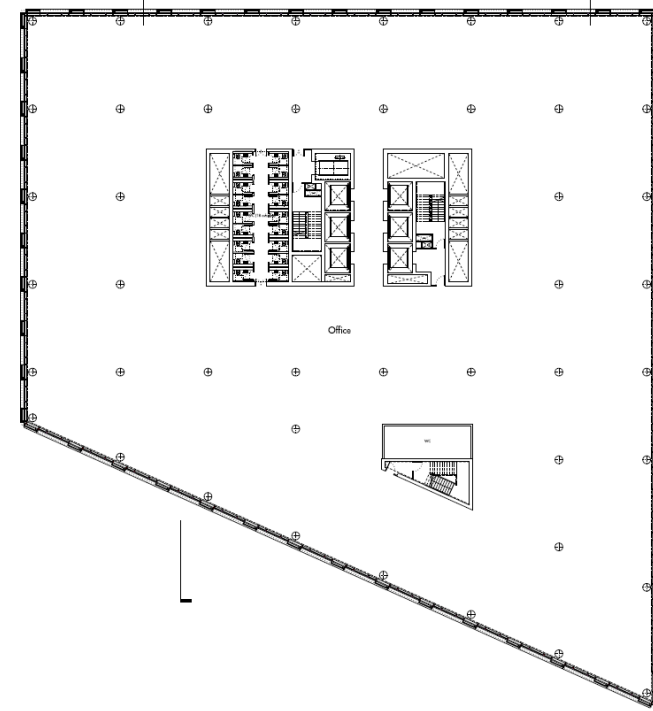
Projected construction period of 24 months with 12 months pre-construction

Floor	Area (Sq Ft)
10	18,344
9	18,344
8	18,344
7	26,296
6	26,296
5	26,296
4	26,296
3	33,570
2	33,570
1	33,570
G	8,407
Office	269,333

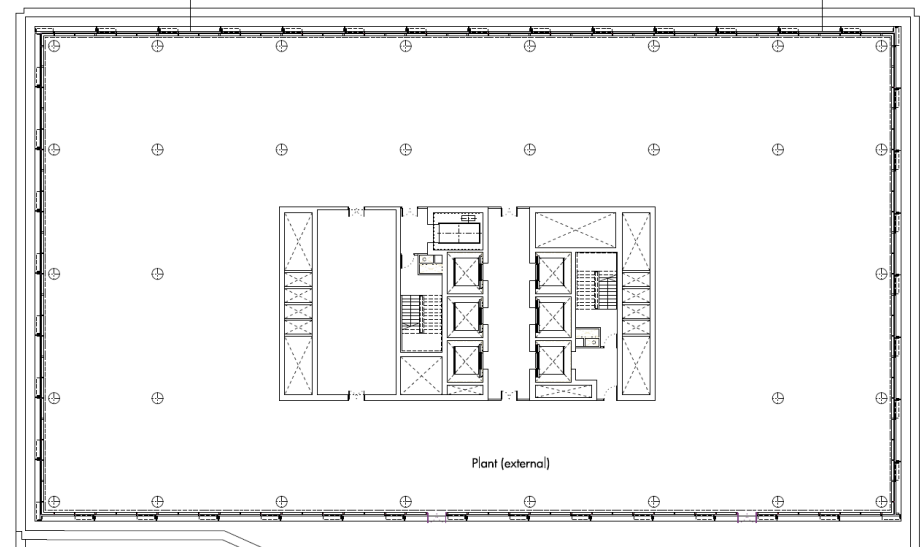
Ground Floor



Levels 1-6



Levels 7-10



Gateway Central

