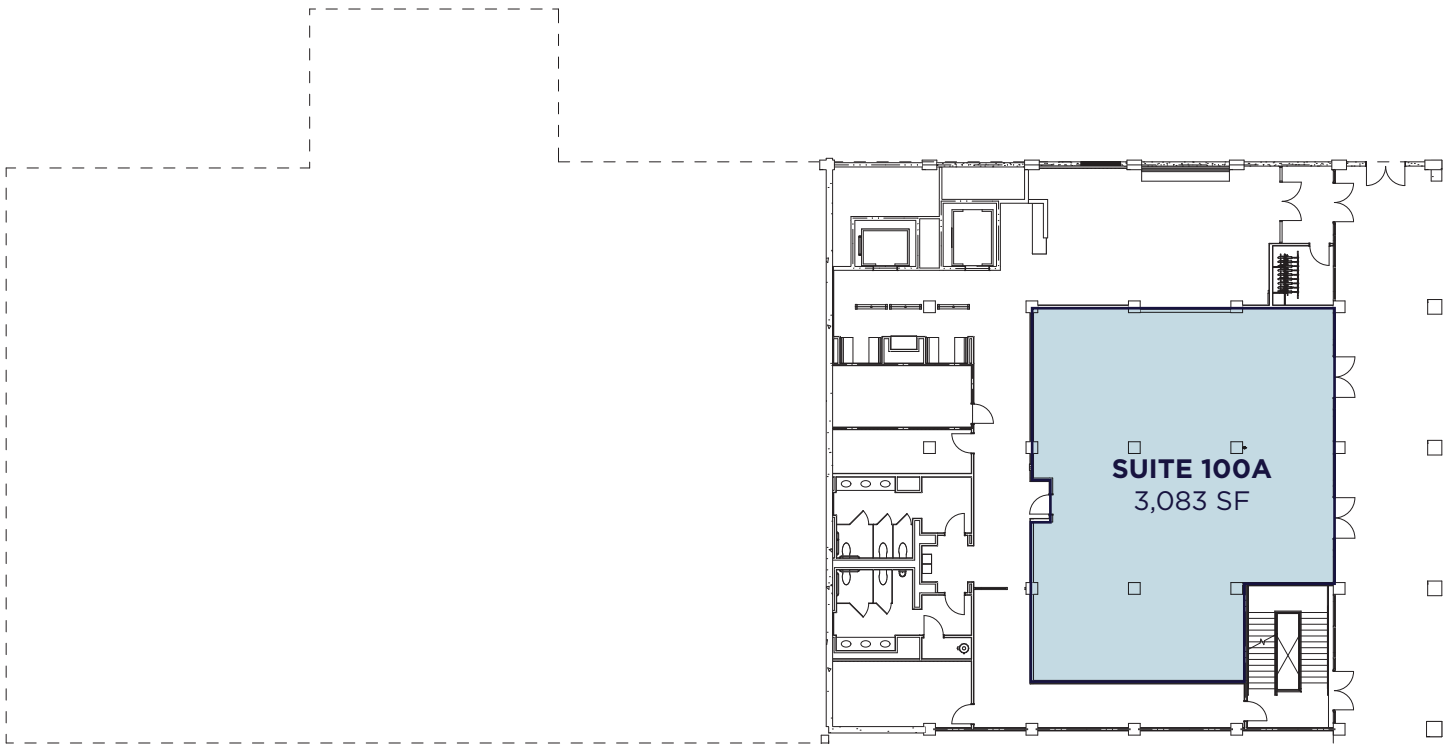


577 Vine Street

FIRST FLOOR



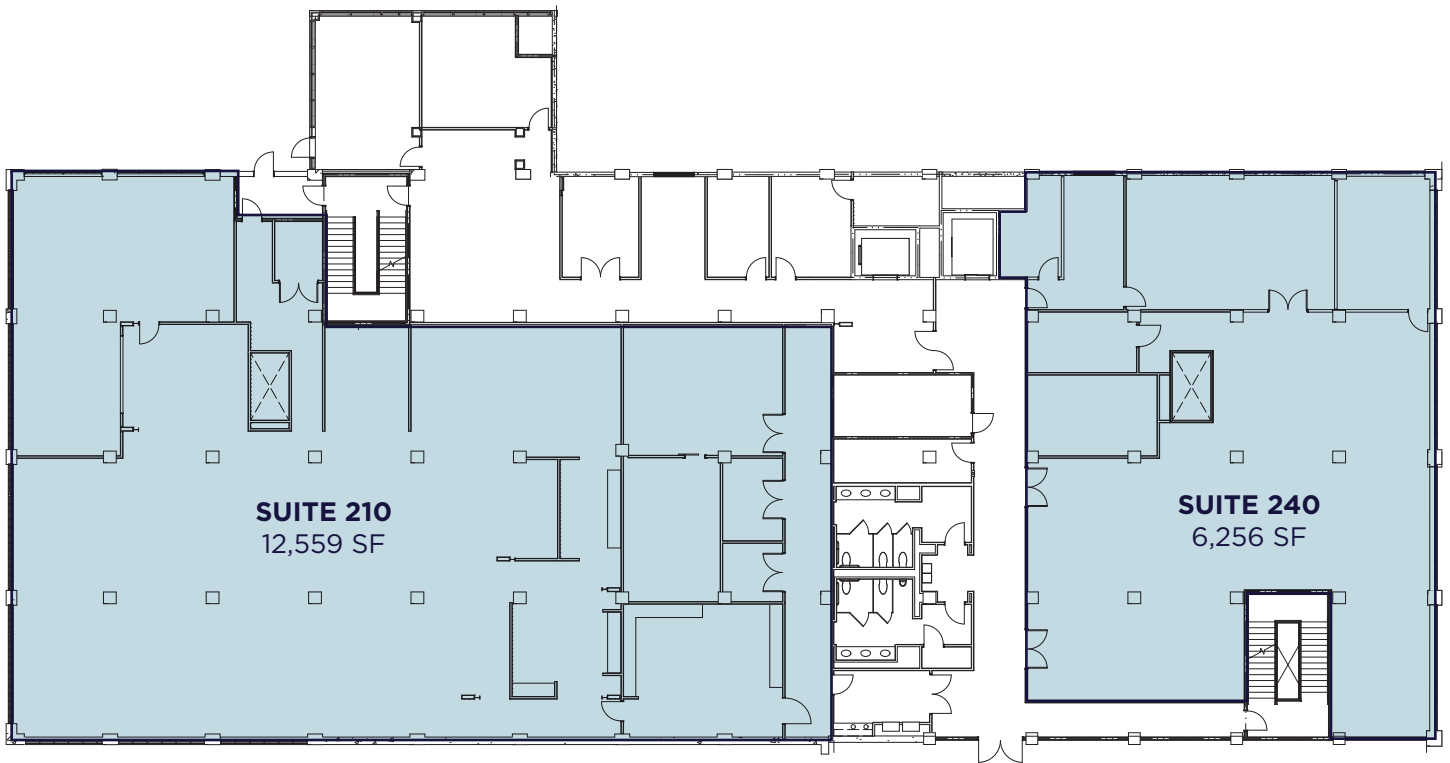
BOBBY FINCH
Executive Managing Director
(336) 287-8599
bobby.finch@cushwake.com

WILLIAM WOLTZ
Vice Chairman
(336) 577-4540
william.woltz@cushwake.com

SETH CONSTABLE
Senior Associate
(336) 407-3654
seth.constable@cushwake.com



577 Vine Street SECOND FLOOR



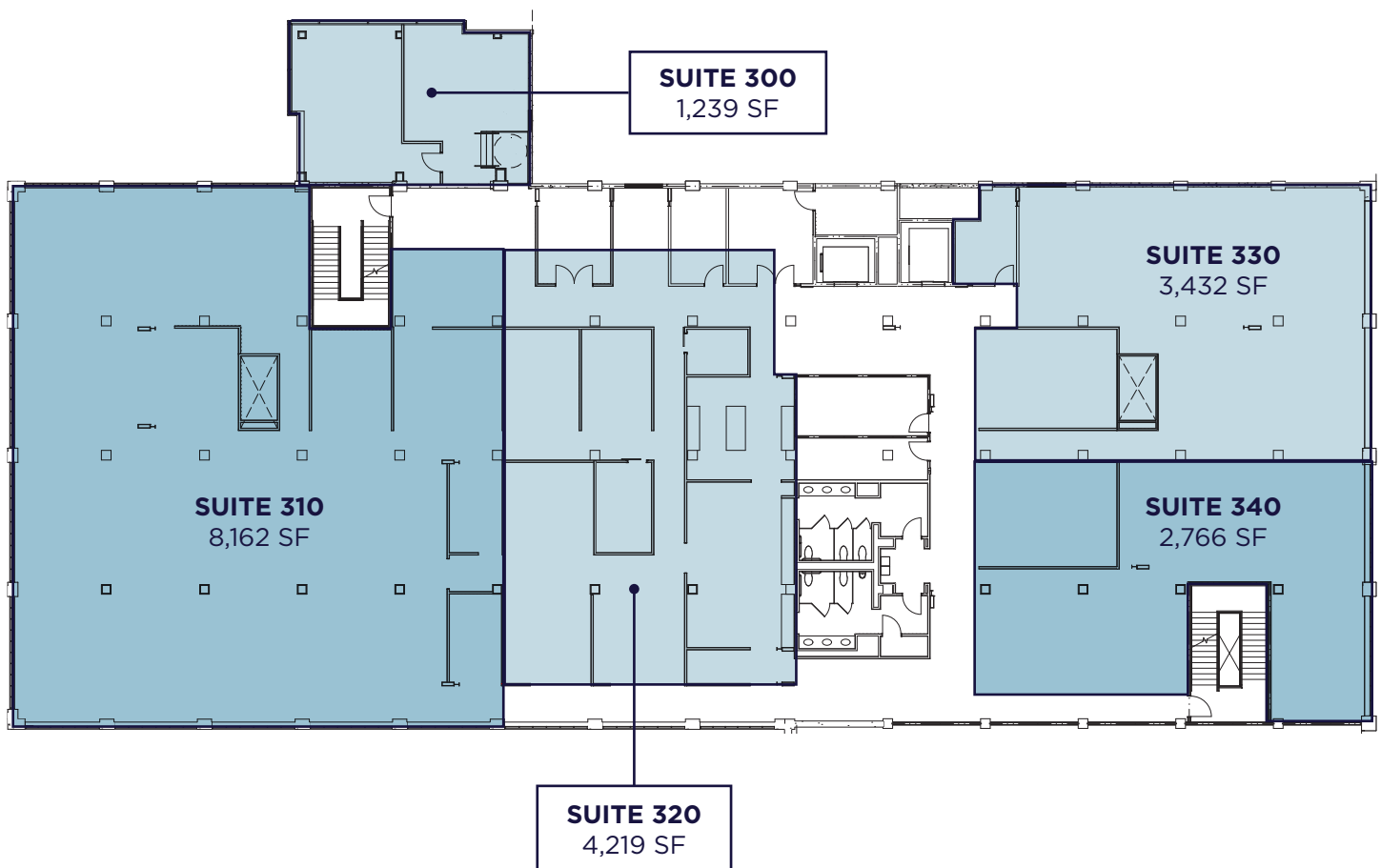
BOBBY FINCH
Executive Managing Director
(336) 287-8599
bobby.finch@cushwake.com

WILLIAM WOLTZ
Vice Chairman
(336) 577-4540
william.woltz@cushwake.com

SETH CONSTABLE
Senior Associate
(336) 407-3654
seth.constable@cushwake.com



577 Vine Street THIRD FLOOR



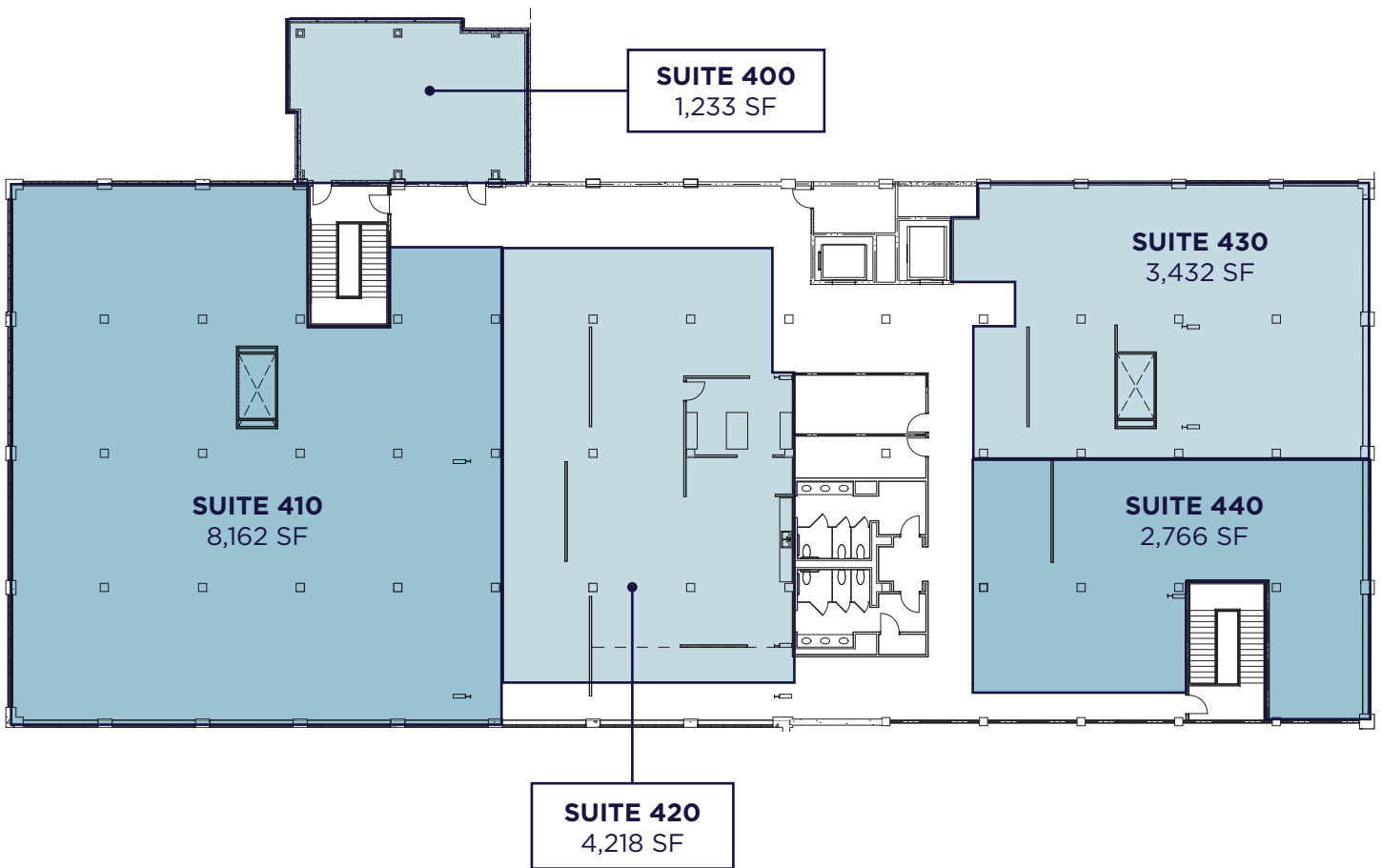
BOBBY FINCH
Executive Managing Director
(336) 287-8599
bobby.finch@cushwake.com

WILLIAM WOLTZ
Vice Chairman
(336) 577-4540
william.woltz@cushwake.com

SETH CONSTABLE
Senior Associate
(336) 407-3654
seth.constable@cushwake.com



577 Vine Street FOURTH FLOOR



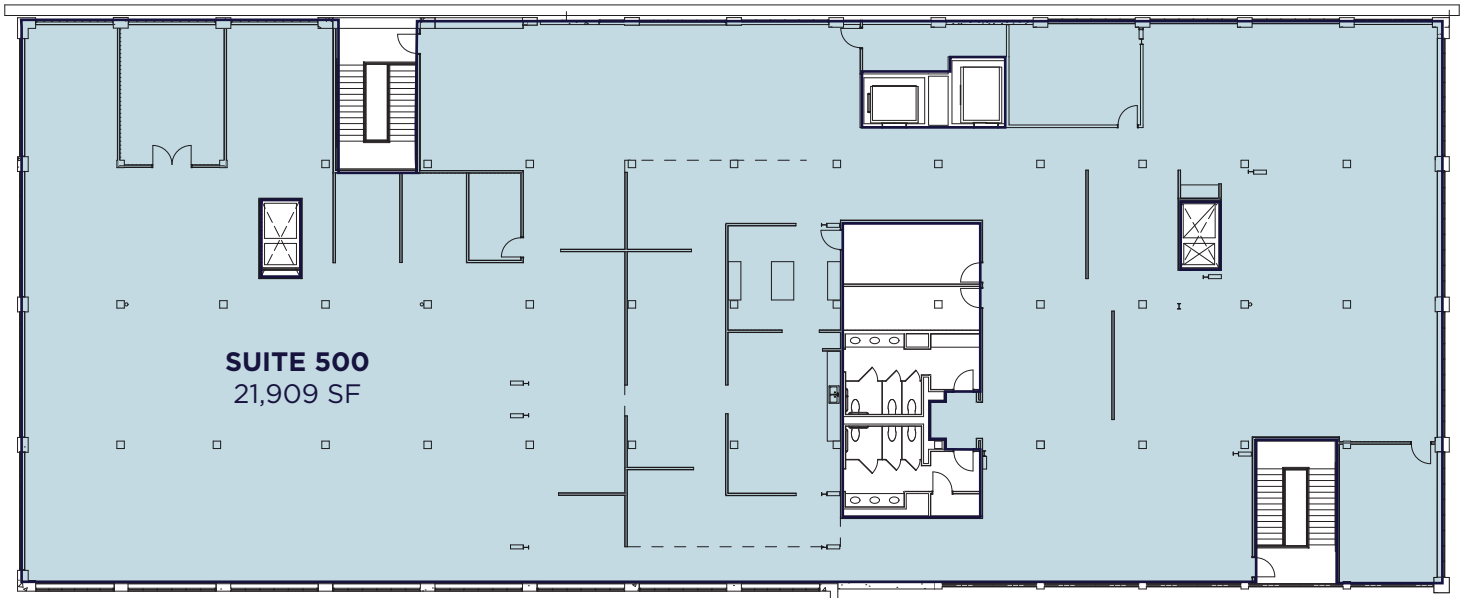
BOBBY FINCH
Executive Managing Director
(336) 287-8599
bobby.finch@cushwake.com

WILLIAM WOLTZ
Vice Chairman
(336) 577-4540
william.woltz@cushwake.com

SETH CONSTABLE
Senior Associate
(336) 407-3654
seth.constable@cushwake.com



577 Vine Street FIFTH FLOOR



BOBBY FINCH
Executive Managing Director
(336) 287-8599
bobby.finch@cushwake.com

WILLIAM WOLTZ
Vice Chairman
(336) 577-4540
william.woltz@cushwake.com

SETH CONSTABLE
Senior Associate
(336) 407-3654
seth.constable@cushwake.com

