

DYAD

SOUTH BAY

19700-19750 S. VERMONT AVE.
TORRANCE, CALIFORNIA



NEWMARK

ERIC LASTITION

Exec. Managing Director
t 310-491-2047
eric.lastition@nmrk.com
CA RE Lic. #01119647

GEOFF LUDWIG

Exec. Managing Director
t 310-491-2077
geoff.ludwig@nmrk.com
CA RE Lic. #01232244



NEWMARK

DYAD SOUTH BAY

DYAD is a low-rise office campus consisting of two buildings totaling ± 116,226 square feet. The property was completely renovated in 2019 to modern, clean, creative space with common amenities, an outdoor seating area, free surface parking, and new monument signage.

PROPERTY HIGHLIGHTS

Modern atrium-style lobbies, concrete floors, and open ceilings

Abundant natural light with floor to ceiling glass windows

Flexible office layouts with build to suit customization

Suite sizes to accommodate large and small tenant requirements

Shared access to common kitchen and two conference rooms

Inviting lobbies with seating areas and electronic directories

Functional outdoor space with tables and seating areas

Prominent monument and building top signage opportunities

New drought resistant landscaping throughout the property

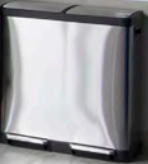
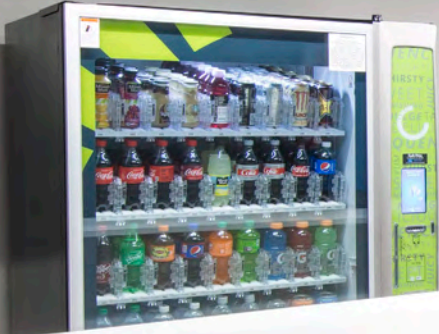
Abundant 4.0/1,000 surface parking ratio, free of charge

Ease of access to the I-405, I-110, and SR-91 freeways

NEWMARK



REST TALK **EAT** COLLABORATE
BREAK REFRESH
CHILL OUT **RELAX** SNACK





NEWMARK

DYAD SOUTH BAY

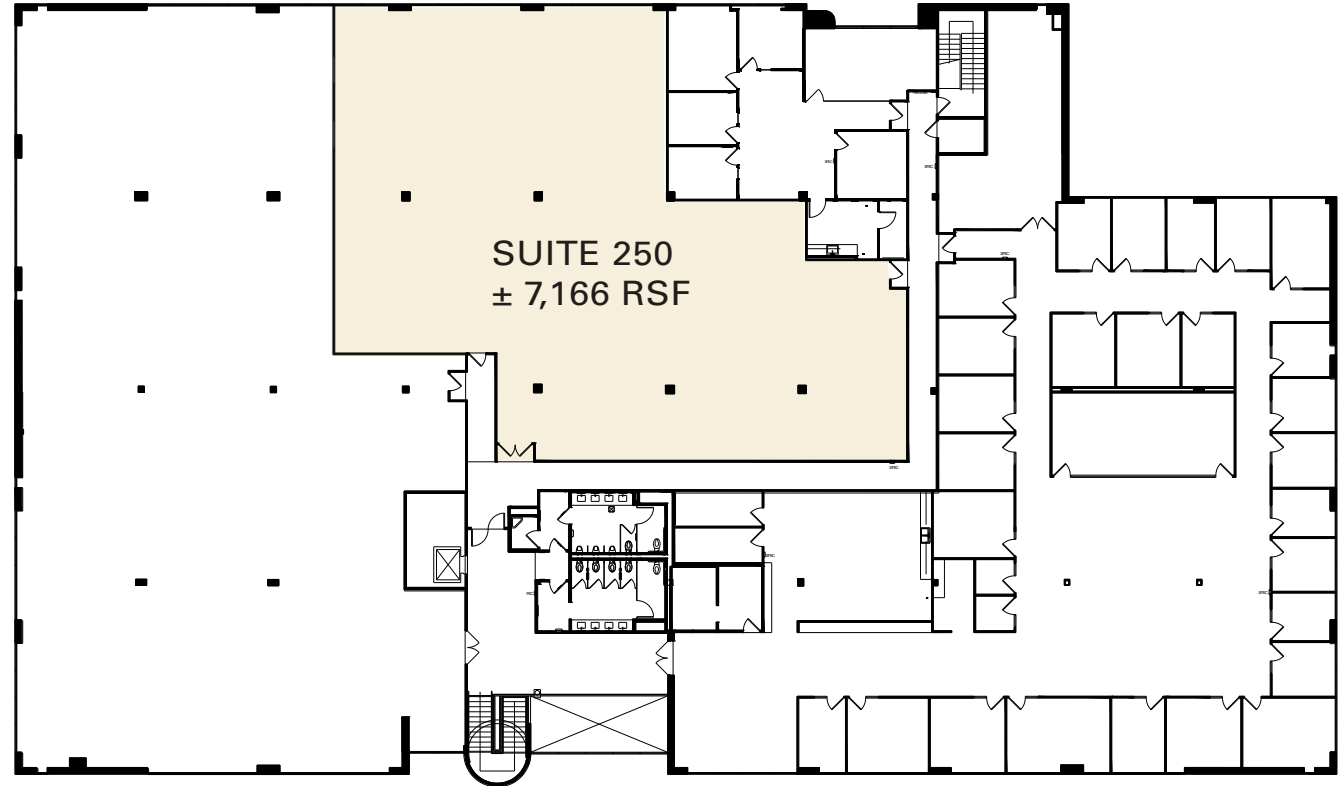
LEASE AVAILABILITY

19700 S. VERMONT AVE.

SUITE 250: 7,166 RSF

RENTAL RATE:

\$2.85 PER RSF, FSG



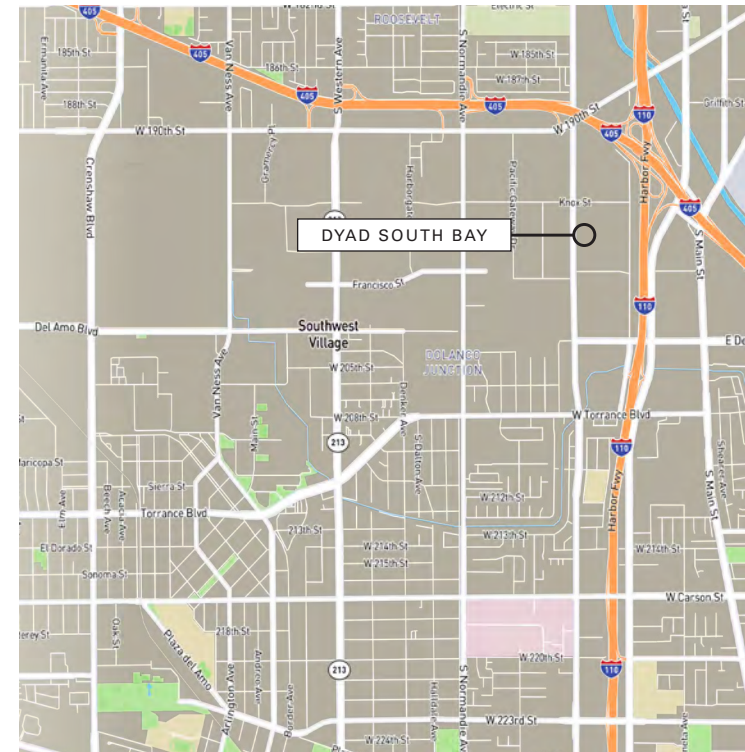
FLOOR PLAN

NEWMARK

DYAD

SOUTH BAY

19700-19750 S. VERMONT AVE.
TORRANCE, CALIFORNIA



NEWMARK

Corporate License #01355491

The information contained herein has been obtained from sources deemed reliable but has not been verified and no guarantee, warranty or representation, either express or implied, is made with respect to such information. Terms of sale or lease and availability are subject to change or withdrawal without notice.

ERIC LASTITION

Exec. Managing Director
t 310-491-2047
eric.lastition@nrmk.com
CA RE Lic. #01119647

GEOFF LUDWIG

Exec. Managing Director
t 310-491-2077
geoff.ludwig@nrmk.com
CA RE Lic. #01232244