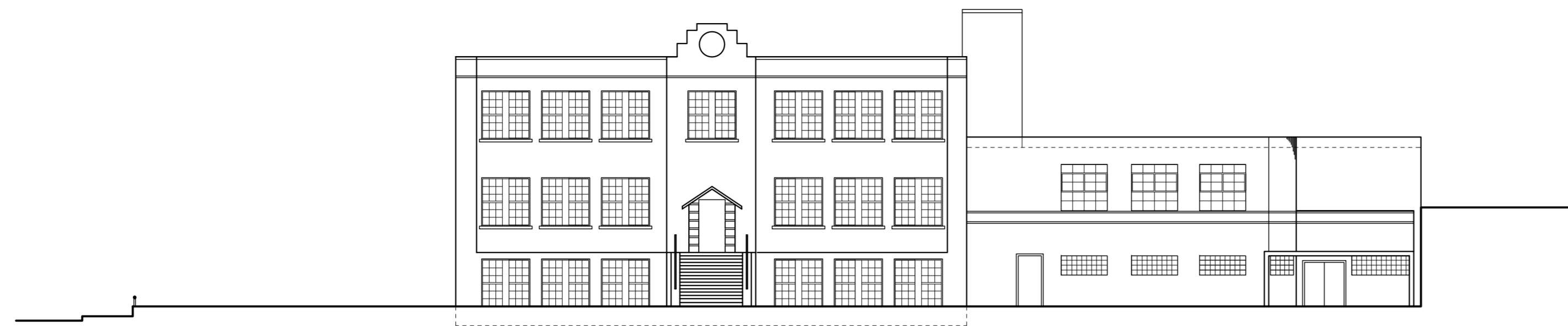
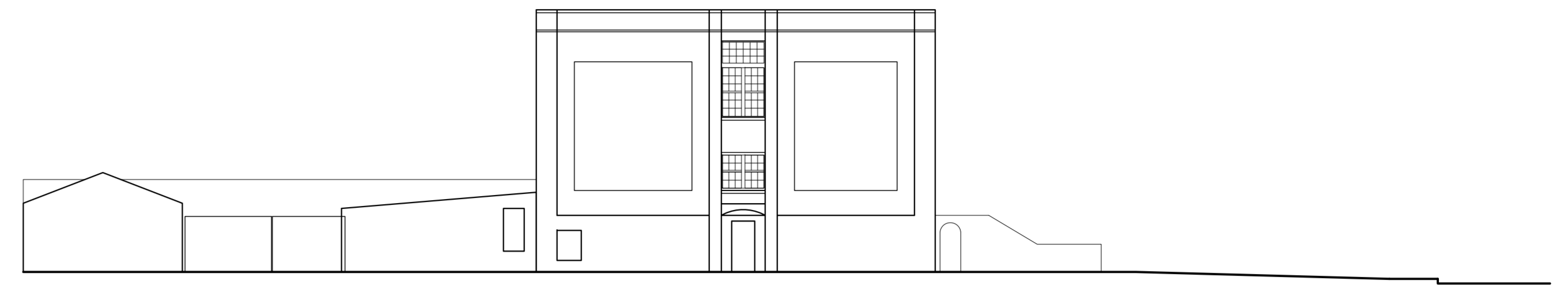


SECTION THROUGH  
3-STORY SCHOOLHOUSE  
BUILDING (SHOWING  
WALL/WINDOW/CEILING HTS)



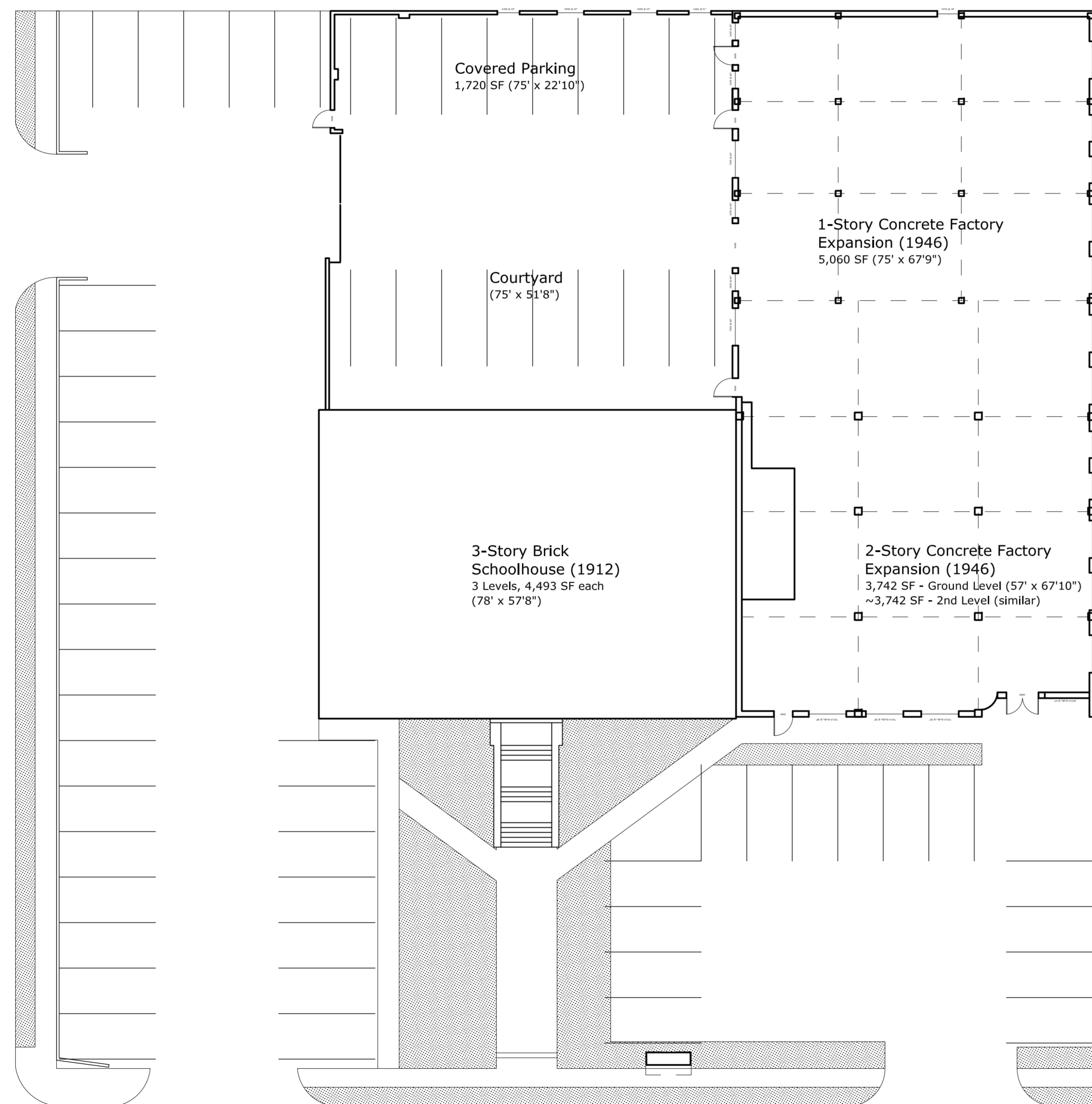
SOUTHWEST (FRONT) ELEVATION  
AS SEEN FROM 2ND AVENUE



NORTHEAST (SIDE) ELEVATION,  
AS SEEN FROM CARPENTER AVE

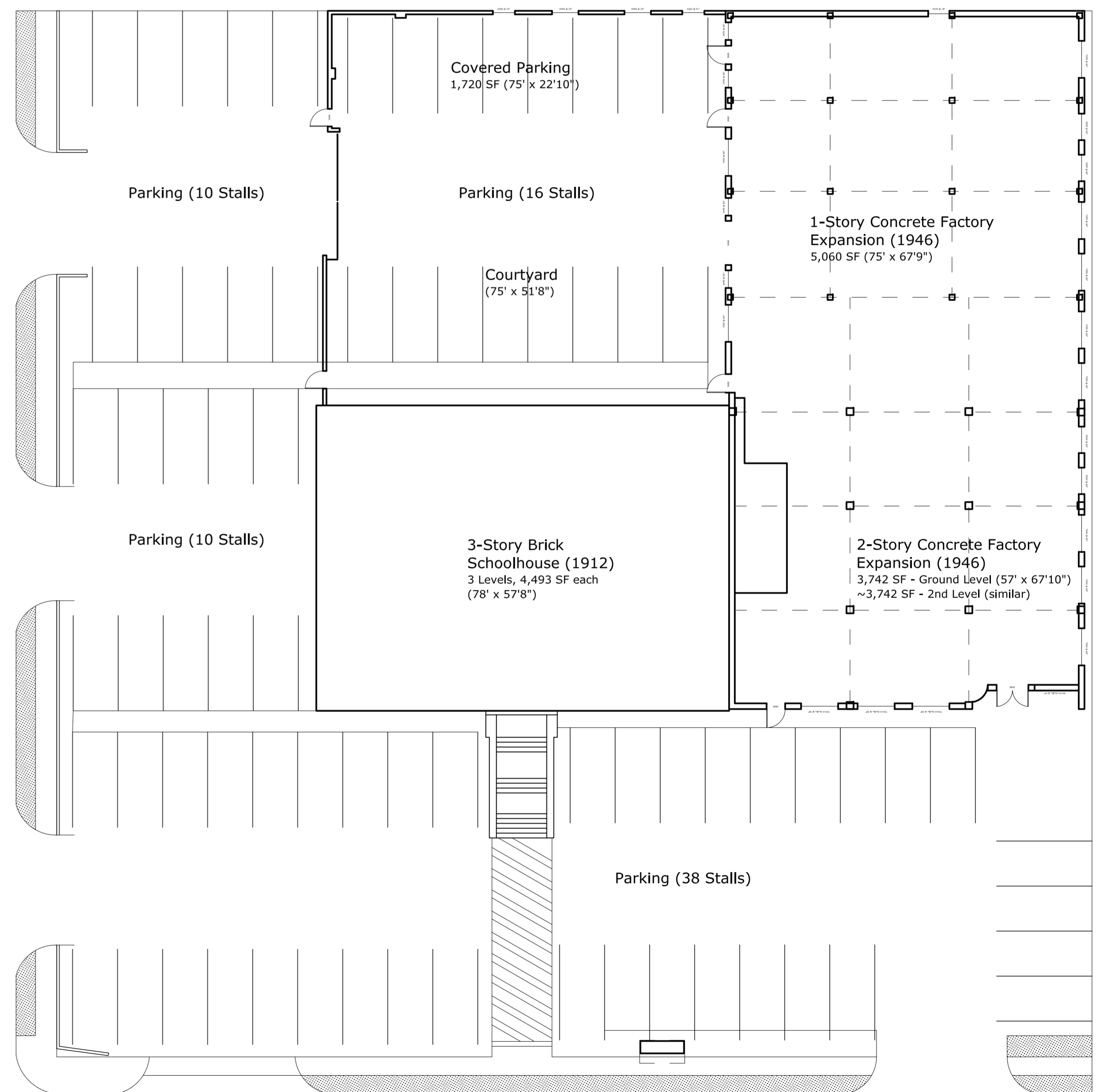
DISCLAIMER: The dimensions used to create these drawings were made by the previous owner/designer for his own use, not a professional surveyor. While care was taken to ensure the greatest accuracy possible, due to the scale, condition, and complexity of the buildings, these drawings should be considered close approximates for design purposes--not exact representations for engineering or surveying purposes.

These drawings have been made in good faith, with much care. However, the former owner does not guarantee the accuracy of these dimensions, or bear any liability for mistakes or problems that might arise thereof.



2nd Avenue

PARKING LAYOUT A2  
61 Parking Spaces



2nd Avenue

PARKING LAYOUT A8  
74 Parking Spaces



4408 S. 2ND AVENUE

SCALE: 1/16" = 1'-0"