

2910 WATERVIEW DRIVE
ROCHESTER HILLS, MICHIGAN

HI-TECH FOR LEASE
28,401 – 71,612 Square Feet Available



**SIGNATURE
ASSOCIATES**
KNOW SIGNATURE | KNOW RESULTS

AVAILABLE IMMEDIATELY



PROPERTY FEATURES

- 43,216 square feet of office available on two floors
- 24,401 square feet of shop available
- 24' clear
- All A/C
- Will renovate to suit
- Up to 250 parking spaces
- Close to FCA Headquarters
- Lease Rate: \$7.95/sf NNN



For more information, please contact:

JOHN BOYD
(248) 948 0102
jboyd@signatureassociates.com

KRIS PAWLOWSKI
(248) 359 3801
kpawlowski@signatureassociates.com

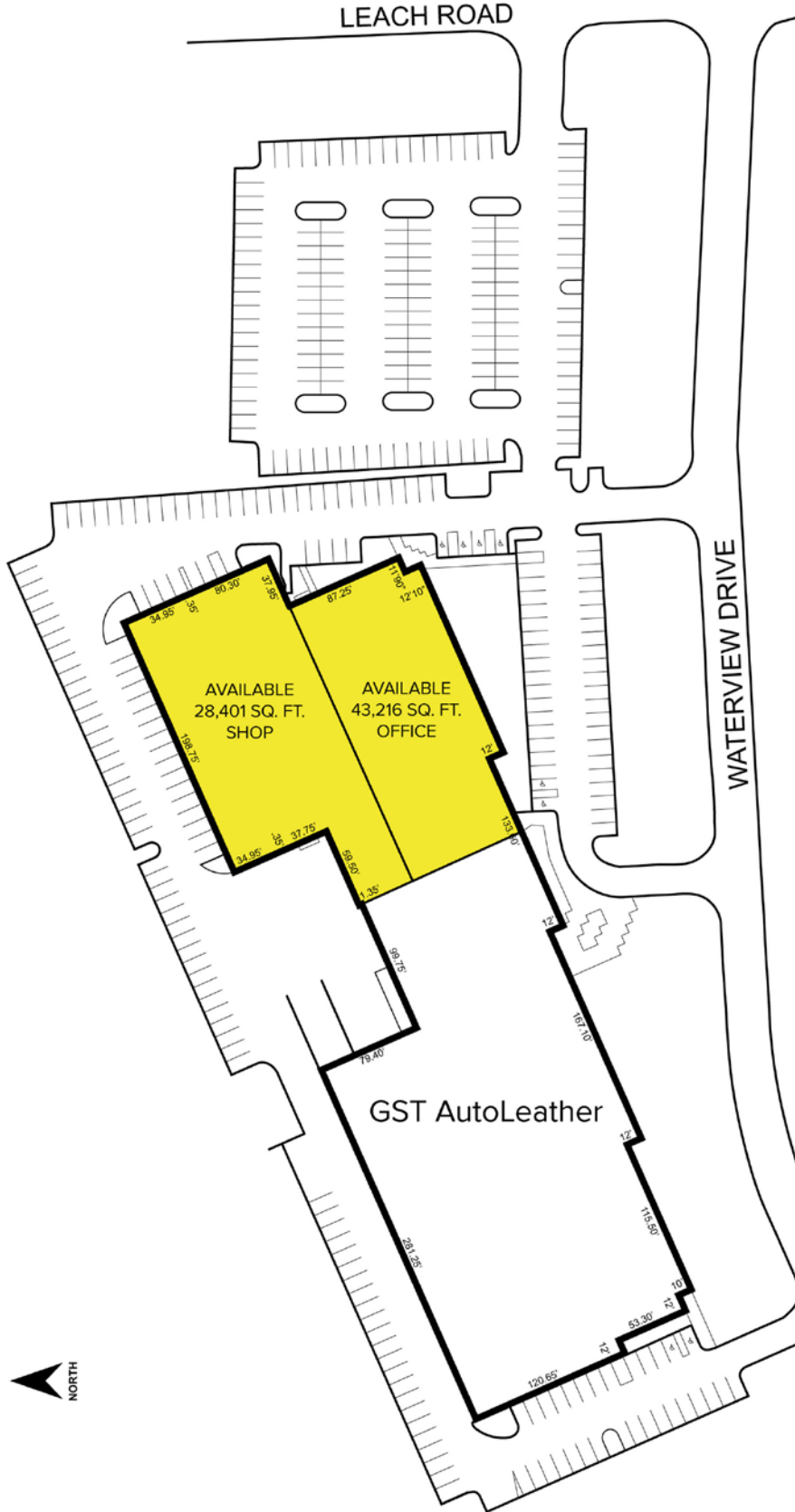
SIGNATURE ASSOCIATES
One Towne Square, Suite 1200
Southfield, MI 48076
www.signatureassociates.com

2910 Waterview Drive – Rochester Hills, Michigan

Hi-Tech For Lease

28,401 – 71,612
Square Feet
AVAILABLE

Site Plan



For more information, please contact:

JOHN BOYD
(248) 948 0102

jboyd@signatureassociates.com

KRIS PAWLOWSKI
(248) 359 3801

kpawloWSKI@signatureassociates.com

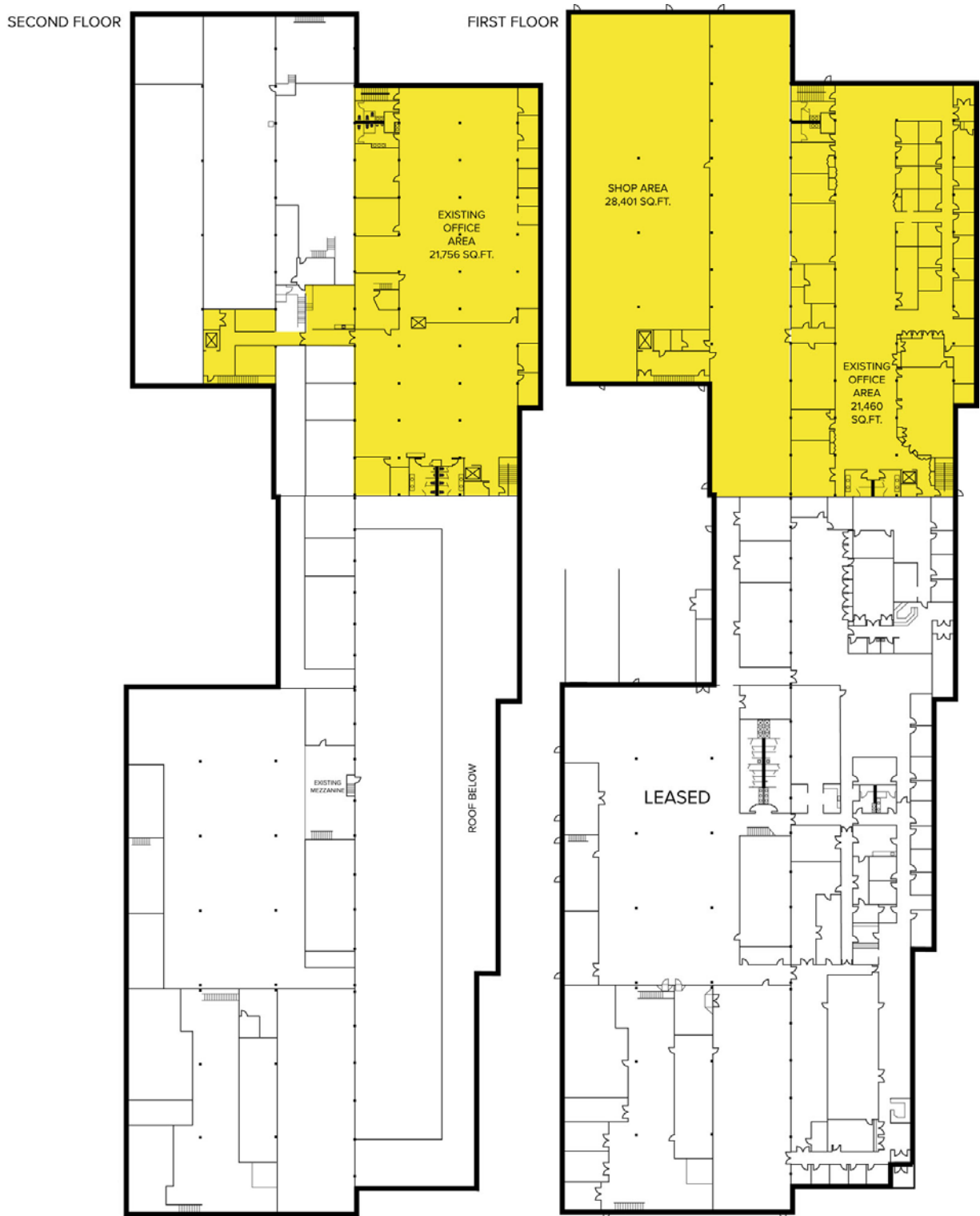
SIGNATURE ASSOCIATES
One Towne Square, Suite 1200
Southfield, MI 48076
www.signatureassociates.com

2910 Waterview Drive – Rochester Hills, Michigan

Hi-Tech For Lease

28,401 – 71,612
Square Feet
AVAILABLE

Floor Plan



For more information, please contact:

JOHN BOYD
(248) 948 0102
jboyd@signatureassociates.com

KRIS PAWLOWSKI
(248) 359 3801
kpawlowski@signatureassociates.com

SIGNATURE ASSOCIATES
One Towne Square, Suite 1200
Southfield, MI 48076
www.signatureassociates.com