



1200 E. WATERTOWER

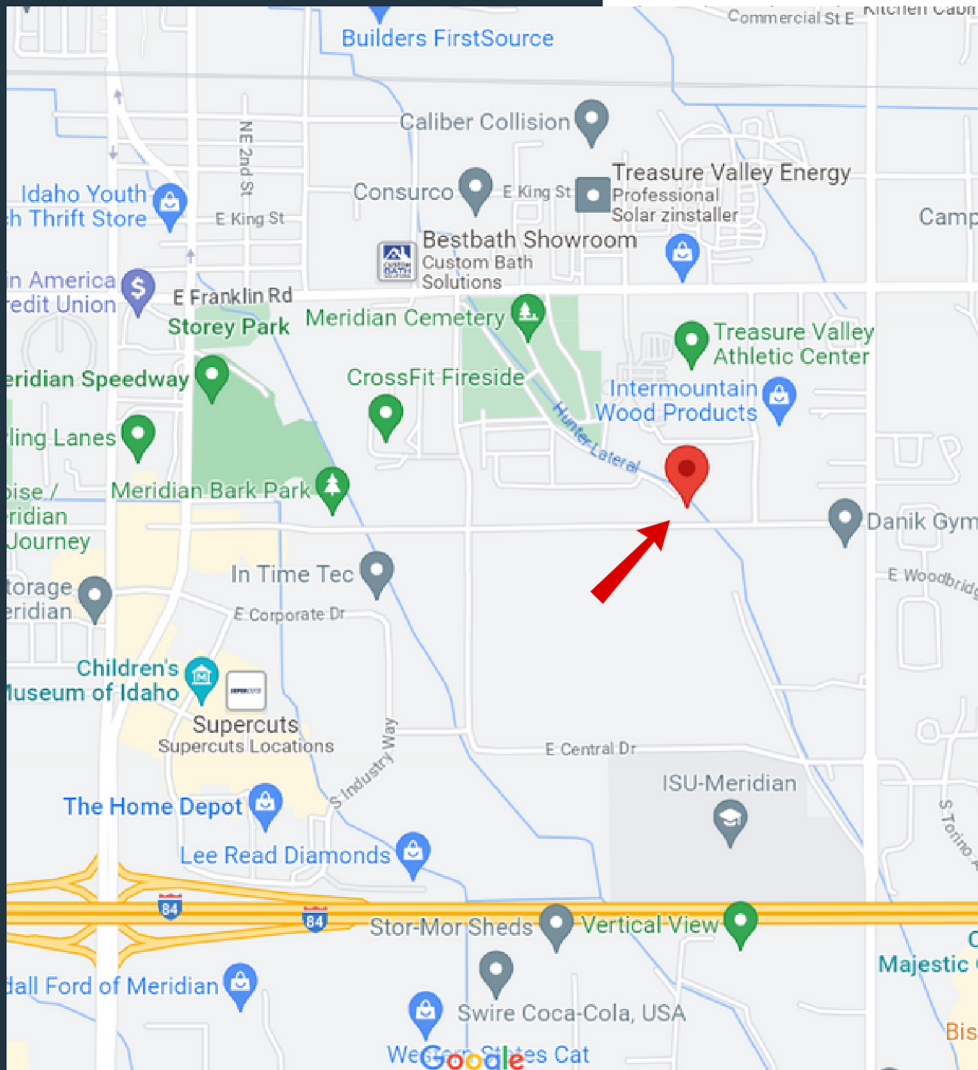
1200 E WATERTOWER ST #120
MERIDIAN, ID 83642

**LEASE RATE: \$20 SF/YR
NNN**

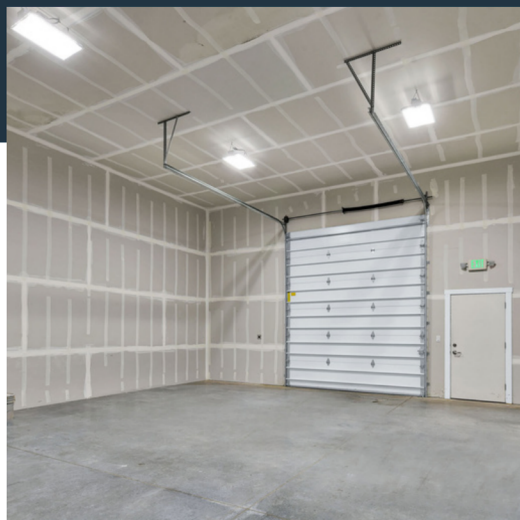
- Well-maintained office suite with garage
- Amazing location- conveniently located between Locust Grove and Meridian Road
- Available suites:
 - Unit 120: 2,258 SF
- Lot Size: .836 acres
- Building Size: 12,415 SF
- Zoning: C-G
- Market: Meridian



COMMERCIAL NORTHWEST
PROPERTY MANAGEMENT



**1200 E WATERTOWER ST #120
MERIDIAN, ID 83642**

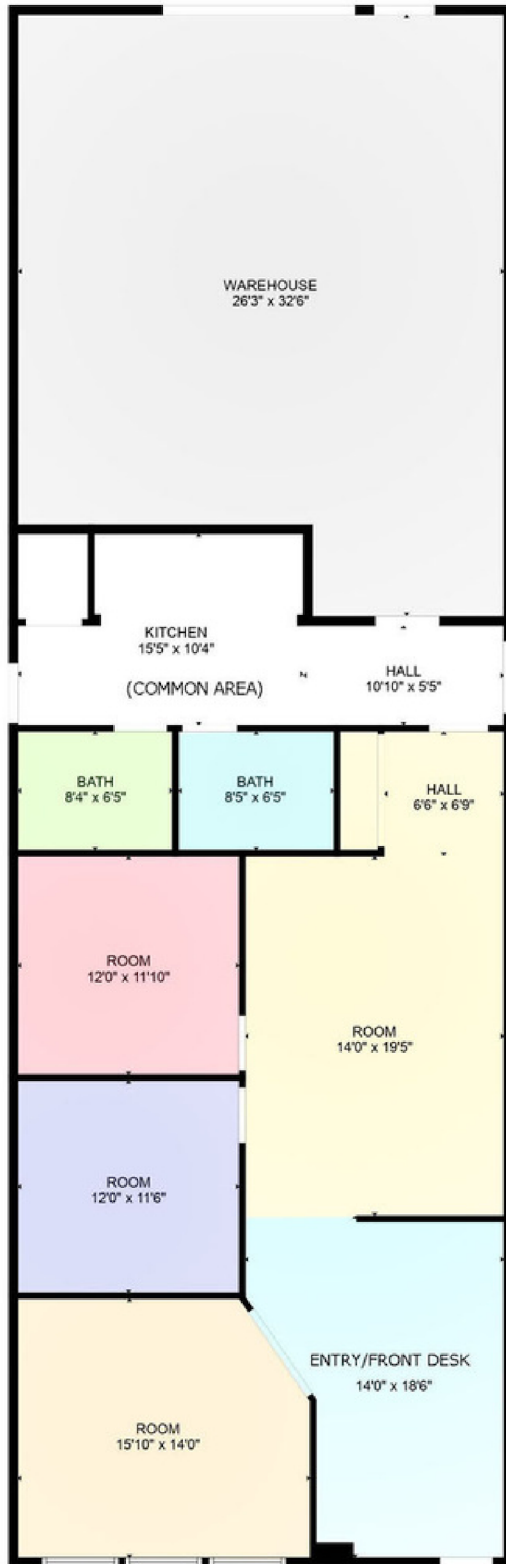


PROPERTY HIGHLIGHTS

- Reserved Parking Spaces for Convenience
- Spacious Garage Featuring a Convenient Roll-Up Door
- Welcoming Reception Area
- Thoughtfully Designed Private Office Spaces for Enhanced Privacy
- Exclusive Private Restrooms for Your Comfort
- Fully Equipped Kitchenette,
- Scenic and Tranquil Landscaping, Enhancing the Property's Appeal



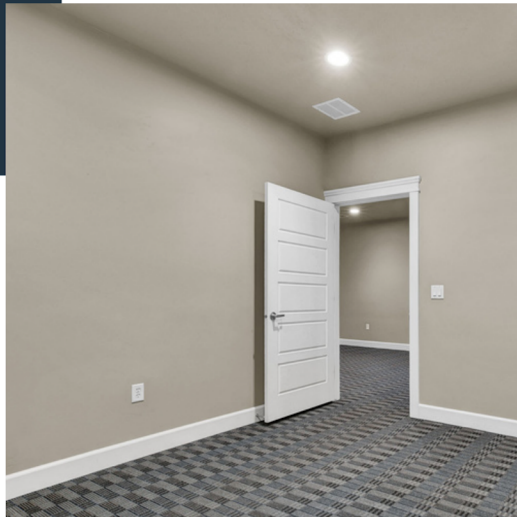
COMMERCIAL NORTHWEST
PROPERTY MANAGEMENT



1200 E WATERTOWER ST #120
MERIDIAN, ID 83642



COMMERCIAL NORTHWEST
PROPERTY MANAGEMENT



1200 E WATERTOWER ST #120
MERIDIAN, ID 83642



COMMERCIAL NORTHWEST
PROPERTY MANAGEMENT

Hailey Powell

 hpowell@commercialnw.com

 cell: (208) 325-5758