

NOW LEASING

CENTRA OFFICE PARK

11808 - 11820 NORTHUP WAY, BELLEVUE, WA



CentraOfficePark.com



For leasing information contact:

Riley Shephard

425.974.4041

riley.shephard@am.jll.com

Mark Flippo

425.974.4007

mark.flippo@am.jll.com





Property Features

- Two 3-story office buildings with 2-story atrium lobbies
- Covered and surface parking stalls with additional covered stalls available
- Natural wooded setting
- On-site amenities:
 - Avanti Deli-Coffee/grab-n-go
 - Conference Center with AV equipment and WiFi
 - Shower/locker facilities
 - Picnic area
- Planned street improvements on Northup Way to include sidewalks, bike lanes and crosswalks

Recent property upgrades

CORRIDOR REFRESH The hallway corridors received a face-lift with brand new carpet, paint, signage and door stains in a contemporary palette. The elevator lobbies have brand new tile.

LOBBY UPGRADES The building lobbies feature brand new paint, tile and furniture for a fresh, modern look

MICRO-MARKET The on-site Avanti micro-market got a makeover with new open seating and brand new coffee service.

ENTRY CANOPY A new sculpture with address signage and bench seating was installed under the entry canopy, along with new tile and brick to improve the building arrival experience.

PICNIC AREA An outdoor seating area with picnic tables, stools, benches, and permanent umbrellas was installed in front of the West building.

MONUMENT SIGNAGE Fresh new, more visible monument signage was installed at the property entrance off of Northup Way









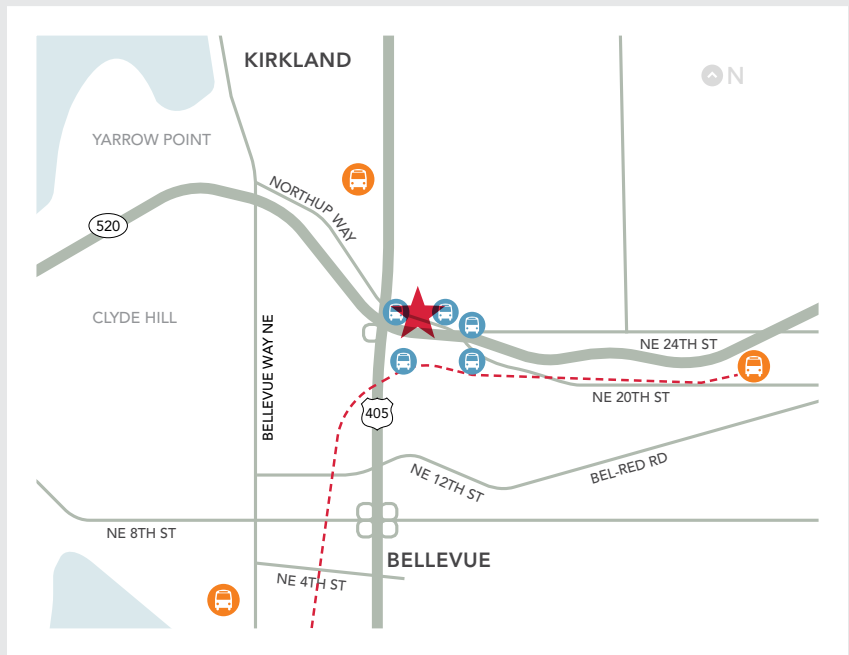
Location Highlights

- Convenient access to SR-520 and I-405, downtown Seattle and all of the Eastside
- Easy access to the abundant amenities and services of Bellevue and Kirkland
- Located in an area with strong demographics



Transit Map

-  Centra Office Park
-  King County Metro Transit Centers
-  Bus stops
-  Future Link Light Rail



Amenities Map



- | KIRKLAND | |
|-----------------------------|---------------------------|
| 1 Beach House Bar and Grill | |
| 2 Kidd Valley | |
| 3 Caren's Chicago Grill | |
| 4 Starbucks | |
| 5 Woodmark Hotel | |
| 6 Beach Cafe | |
| NORTHUP CORRIDOR | |
| 7 The Keg | 15 Dixie's BBQ |
| 8 McDonalds | 16 Lowe's |
| 9 Big Fish Grill | 17 Bellevue Brewing Co. |
| 10 La Quinta Hotel | 18 Kiku Sushi |
| 11 Burger Master | 19 Caspian |
| 12 Subway | 20 Amore' Coffee |
| 13 QFC | 21 I Love Teriyaki |
| 14 Starbucks | |
| BELLEVUE | |
| 22 Wendy's | 32 Daniel's Broiler |
| 23 QFC | 33 Hyatt Hotel |
| 24 Starbucks | 34 Courtyard By Marriott |
| 25 PF Changs | 35 Lunchbox Laboratory |
| 26 Cheesecake Factory | 36 John Howie Steak House |
| 27 Red Robin | 37 Wild Ginger |
| 28 520 Bar and Grill | 38 Whole Foods |
| 29 Palomino's | 39 Uwajimaya |
| 30 Westin Hotel | 40 Home Depot |
| 31 Maggiano's | |

For leasing information contact:

Riley Shephard
425.974.4041
riley.shephard@am.jll.com

Mark Flippo
425.974.4007
mark.flippo@am.jll.com

CentraOfficePark.com



now leasing

CENTRA OFFICE PARK

11808 - 11820 NORTHUP WAY, BELLEVUE, WA

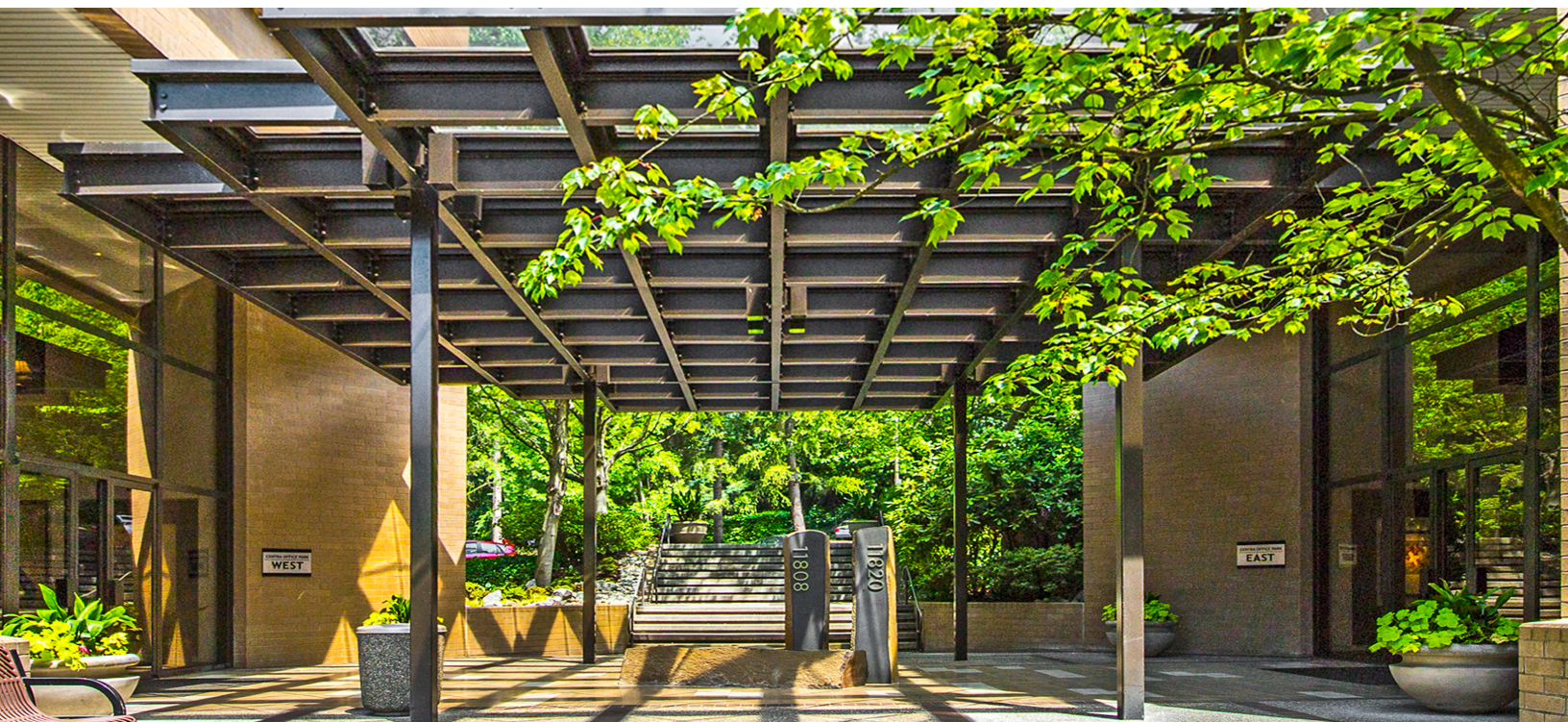
Current Availabilities

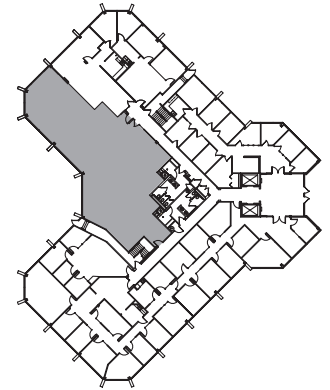
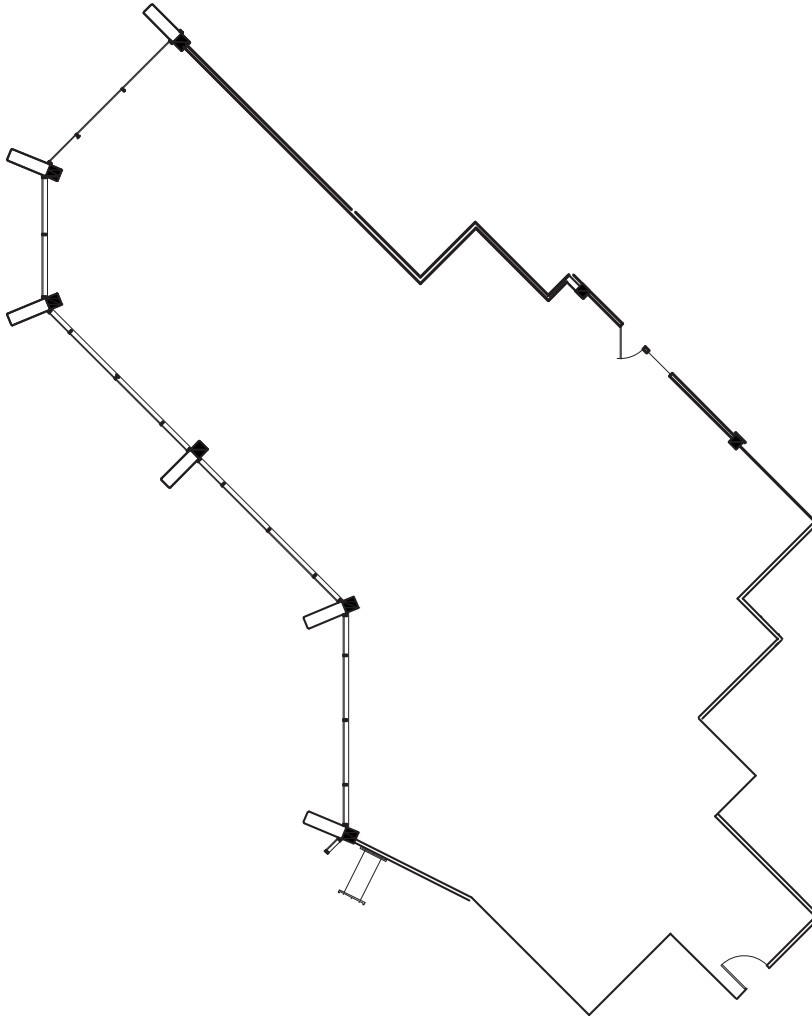
West Building

Suite 150 3,575 SF Available Now

East Building

Suite 100 3,275 SF September 2018
Suite 200 9,961 SF December 2018
Suite 310 5,640 SF Available Now





Riley Shephard

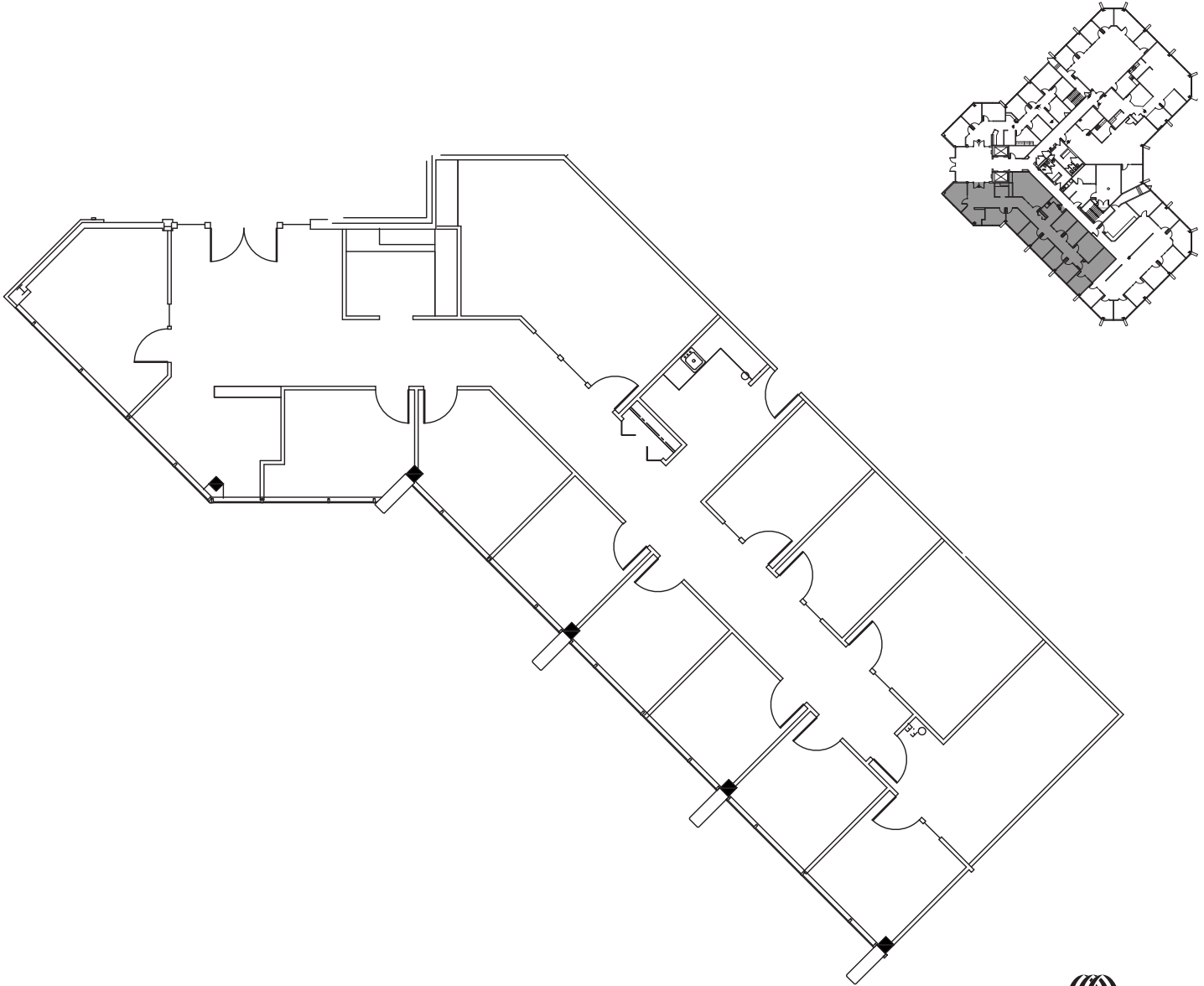
425.974.4041

riley.shephard@am.jll.com

Mark Flippo

425.974.4007

mark.flippo@am.jll.com



Riley Shephard

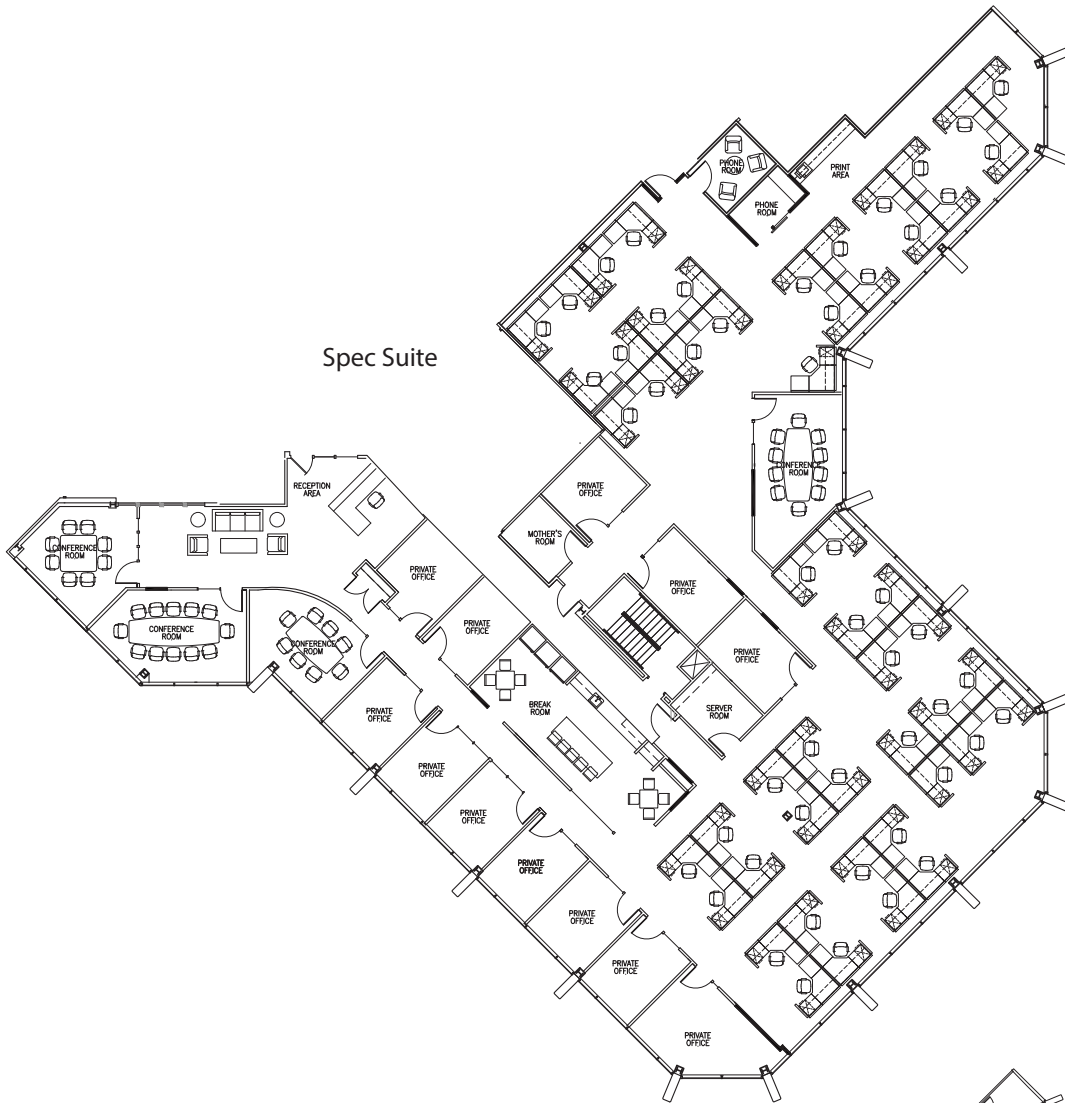
425.974.4041

riley.shephard@am.jll.com

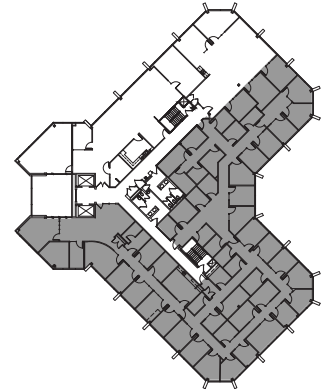
Mark Flippo

425.974.4007

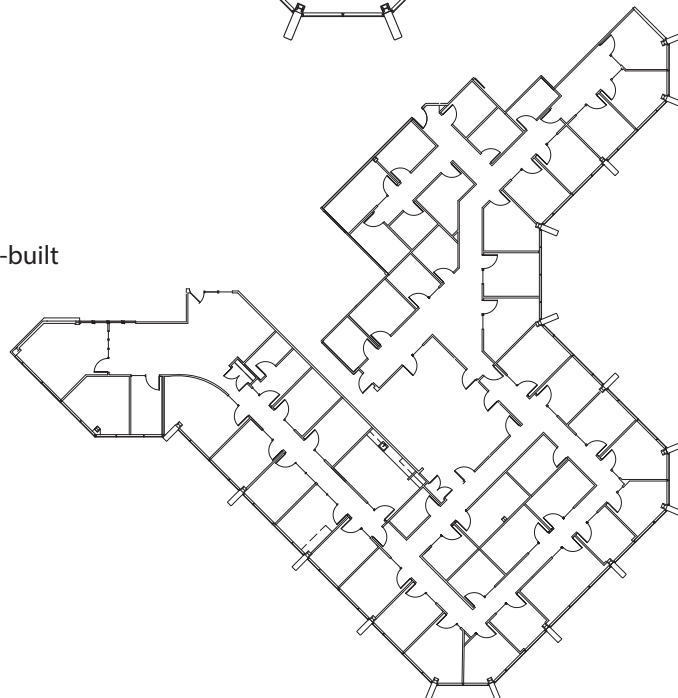
mark.flippo@am.jll.com



Spec Suite

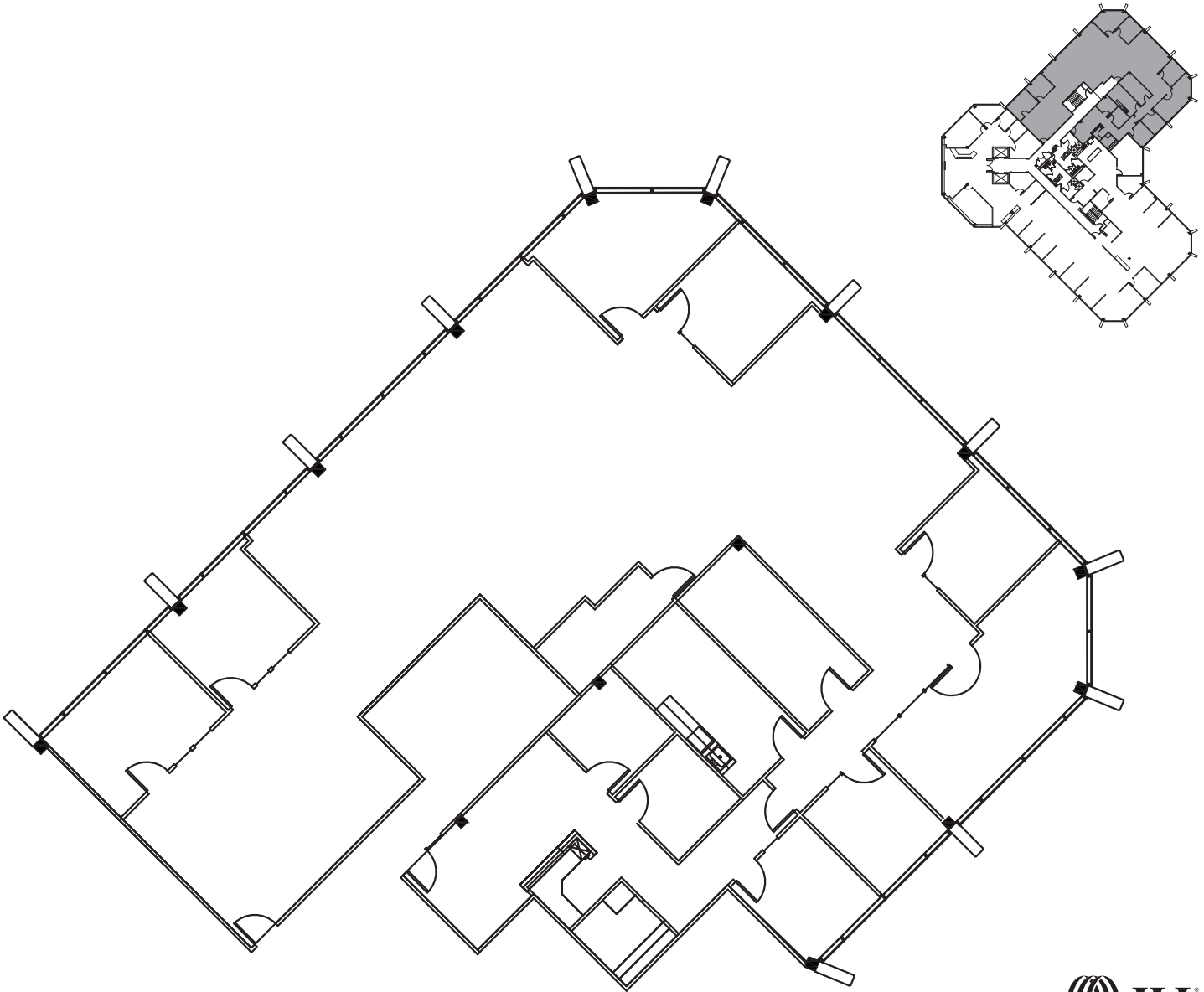


As-built



Riley Shephard
425.974.4041
riley.shephard@am.jll.com

Mark Flippo
425.974.4007
mark.flippo@am.jll.com



Riley Shephard

425.974.4041

riley.shephard@am.jll.com

Mark Flippo

425.974.4007

mark.flippo@am.jll.com