

THE CLAWSONIAN

141-149 E. 14 Mile Road / Clawson, MI



MID-AMERICA®
Real Estate-Michigan, Inc.

DRONE VIDEO



RETAIL OPPORTUNITY

THE CLAWSONIAN



Address

141-149 E. 14 Mile Road
Clawson, MI 48017

Availability

1,905 SF

Features

- New mixed-use development for lease on 14 Mile Road, east of Main Street, in the heart of Clawson, Michigan.
- Project is anchored by Great Lakes Ace Hardware and includes 31 luxury apartments, 123 parking spaces and 7,821 SF of retail space.
- 19' - 6" ceiling heights.
- Adjacent to local institution, Noble Fish.
- 22,844 vpd on 14 Mile Road.
- 1 space remaining.

Area Tenants



Demographics (2022)

	1 MILE	3 MILES	5 MILES
POPULATION	14,782	103,730	318,653
HOUSEHOLDS	6,935	49,370	137,566
AVG HOUSEHOLD INCOME	\$98,309	\$110,150	\$118,638
DAYTIME POPULATION	12,664	154,338	355,429

THE CLAWSONIAN

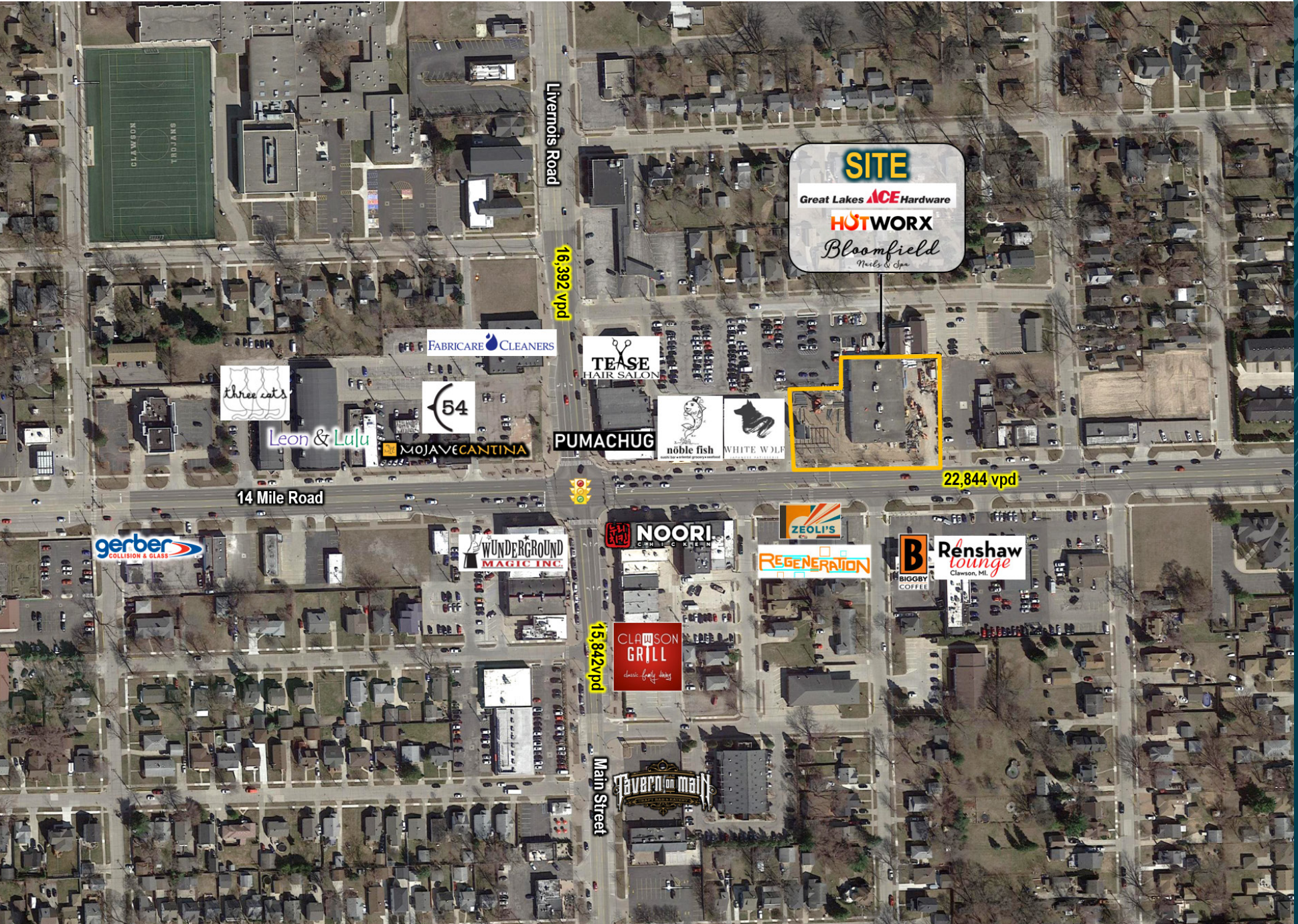


THE CLAWSONIAN



HIGH LEVEL AERIAL

THE CLAWSONIAN



LOW LEVEL AERIAL

THE CLAWSONIAN



Jared
Gell

Mid-America Real Estate -
Michigan, Inc.

T: 248.855.6800

JGell@MidAmericaGrp.com

Eric
Unatin

Mid-America Real Estate -
Michigan, Inc.

T: 248.855.6800

EUnatin@MidAmericaGrp.com



38500 Woodward Ave, Suite 100
Bloomfield Hills, Michigan 48304
248.855.6800

MidAmericaGrp.com

CONTACT