



**3410** EAST 3RD AVENUE

Office & Warehouse for Lease in Foster City / San Mateo

Ideally located near the **San Mateo–Hayward Bridge**, on the corner of **East 3rd Avenue** and **Foster City Blvd.**



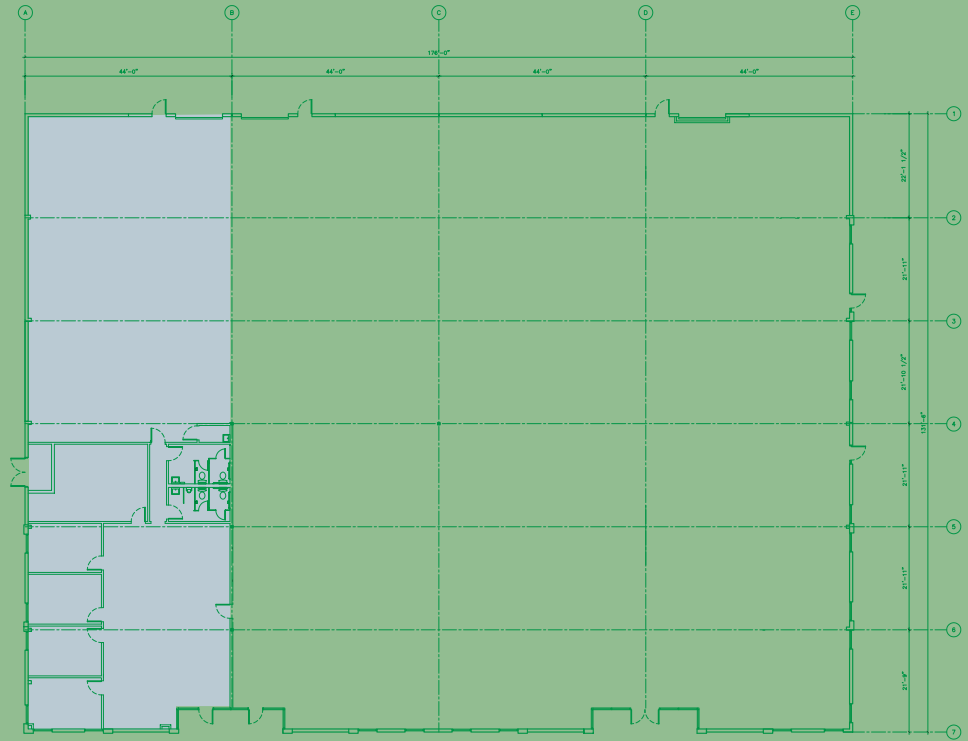
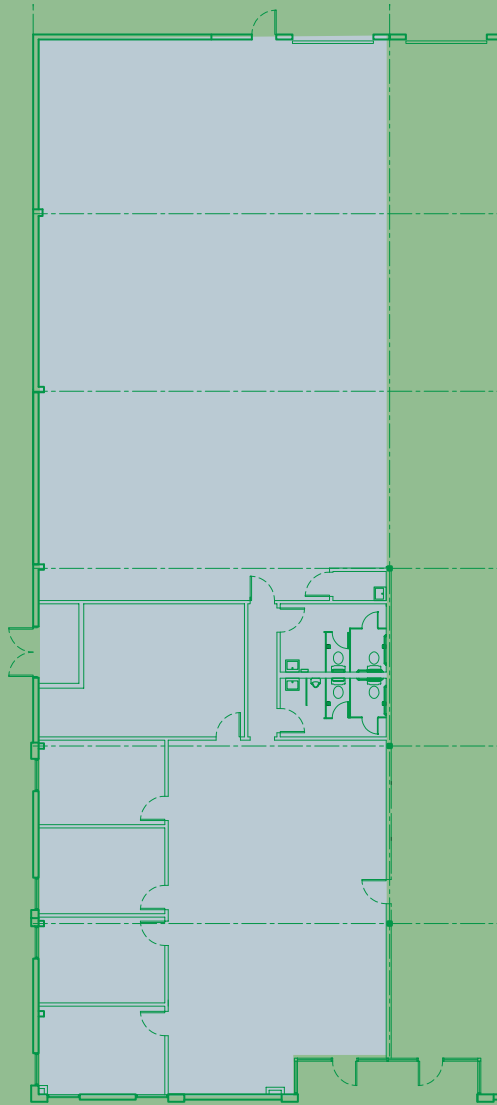
← San Mateo Bridge

92

3410 East 3rd Ave.

Foster City Blvd

East 3rd Ave.



**■ For Lease: 5,786 RSF Total**

**2,882 RSF Office Space:**

Includes 4 private rooms and a conference room & open space for cubicles.

**2,904 RSF Warehouse Space:**

With 18 Feet High Ceiling Clearance and rolling service door.





*Main Entrance*



*Open Area for Cubicle Space*



*Conference Room*



*Warehouse*



*Back Entrance*



For Leasing Information, Contact:

Scott Japczynski

[sjapczynski@blackforestventures.com](mailto:sjapczynski@blackforestventures.com)

Telephone (281) 602-3641

3410 East 3rd Ave. Foster City, CA 94404