



this is a

good space®

149 Wythe Avenue

149 Wythe Avenue Williamsburg, 11249

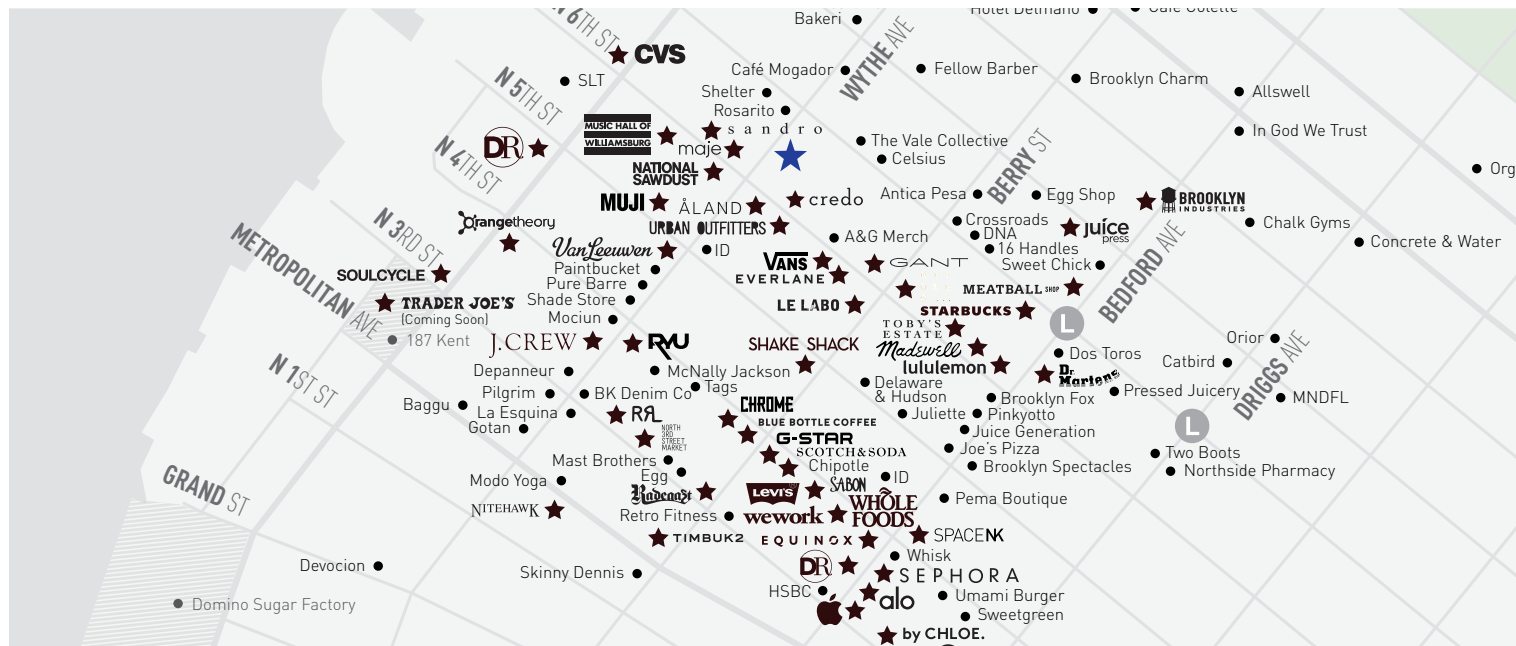


Total Size	Ground Floor	Lower Level
4,305 sf	1,575 sf	1,310 sf
Rear Yard	Frontage	Location
1,410 sf	35 ft on Wythe Avenue	East Block between N 6th and N 7th Streets
Possession	Term	Rent
Immediate	Negotiable	Upon Request
Unique Features	Comments	Neighborhood Tenants

- 11 ft ceiling heights
- Rear yard can potentially be covered
- Potential to vent

Located on prime retail corridor in the heart of Williamsburg, just steps from one of the neighborhood's busiest corners.

Bulletin, Muji, Smorgasburg & Brooklyn Flea, Vans – The General, Aland, Urban Outfitters Space 98, Van Leeuwen, Everlane, National Sawdust, Café Mogador, Bakeri, The Great Eros

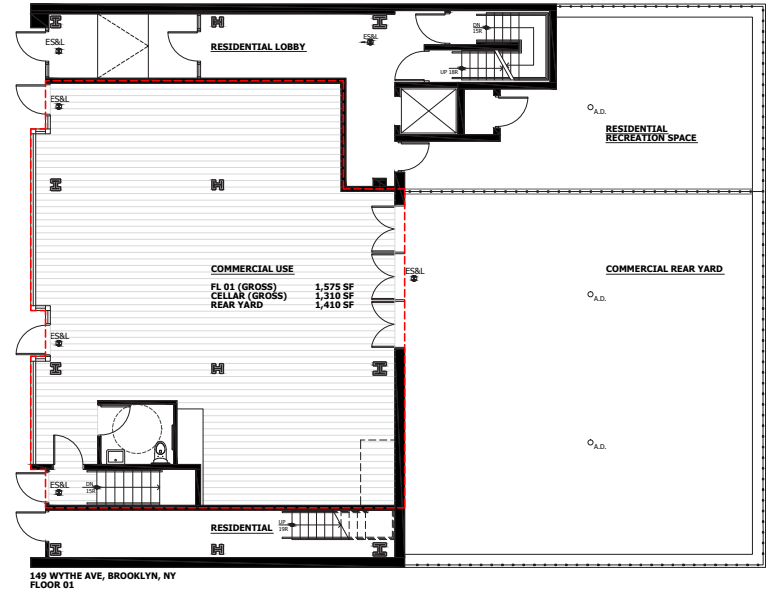


<p>Chris DeCrosta 718.255.9900 x701 cd@goodspace.nyc</p>	<p>Hank O'Donnell 718.255.9900 x702 ho@goodspace.nyc</p>	<p>Roberto Rhett 718.255.9900 x700 rr@goodspace.nyc</p>	
---	---	--	--

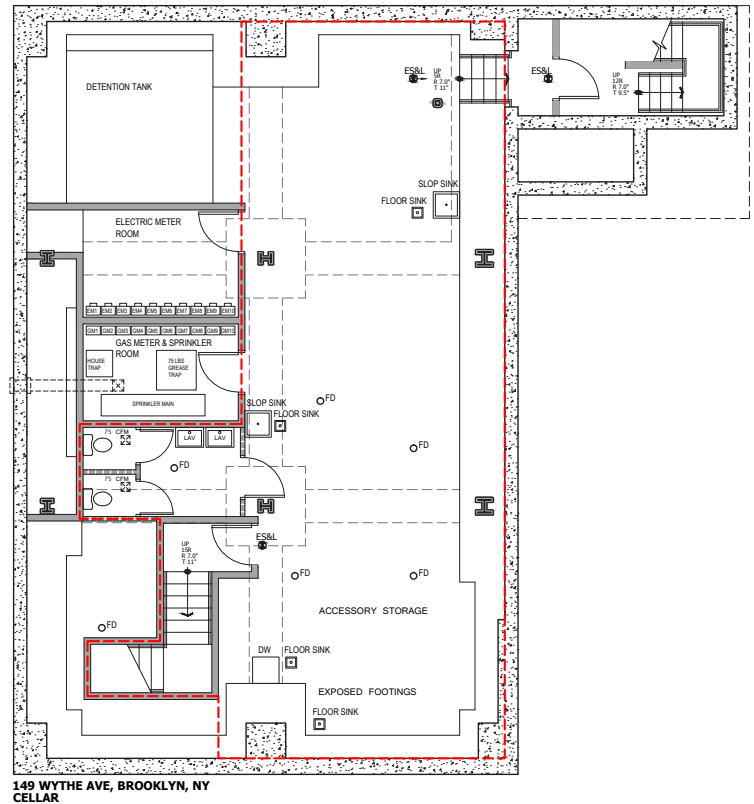
149 Wythe Avenue Williamsburg, 11249



Ground Floor	Square Footage	Frontage
	1,575 sf	35 ft
Ceiling Height	Term	Possession
11 ft	Negotiable	Immediate



Lower Level	Square Footage	
	1,310 sf	
Ceiling Height	Term	Possession
7.5 ft	Negotiable	Immediate



Chris DeCrosta
718.255.9900 x701
cd@goodspace.nyc

Hank O'Donnell
718.255.9900 x702
ho@goodspace.nyc

Roberto Rhett
718.255.9900 x700
rr@goodspace.nyc

