

FOR LEASE - RETAIL

6 CITY CENTER - PORTLAND, ME



**1,580± SF RETAIL SPACE
in the Heart of the Financial District**

- Beautiful open configuration
- Former gallery space
- Suitable for a variety of retail uses
- AVAILABLE NOW

Lease Rate: \$3,450/month

Call Peter to schedule a tour to see this property.



PETER HARRINGTON
207.772.0088 direct
207.358.7616 direct fax
peter@malonecb.com

MALONE COMMERCIAL BROKERS
5 Moulton Street • Suite 3
Portland, ME 04101
207.772.2422 main

PROPERTY SUMMARY

6 CITY CENTER - PORTLAND, ME



BUILDING INFORMATION

LANDLORD:	Six City Center LLC
ZONE:	B-3 Downtown Business
BUILDING SIZE:	21,090± SF
BUILT:	Late 1800s
CONSTRUCTION:	Brick/timber
EXTERIOR:	Brick/granite
STORIES:	4
ELEVATOR:	Yes
RESTROOMS:	1 in space
CEILINGS:	8 to 9±'
LIGHTING:	Spot quartz lighting
HVAC:	Oil/electric
WATER & SEWER:	Public
SPRINKLER:	Wet system

LEASE INFORMATION

SPACE:	1,580± SF - 1st Floor
AVAILABILITY:	Immediate
LEASE RATE:	\$3,450/month Modified Gross Tenant pays electric for HVAC, lights & plugs

INTERIOR PHOTOS

6 CITY CENTER - PORTLAND, ME



PETER HARRINGTON
207.772.0088 direct
207.358.7616 direct fax
peter@malonecb.com

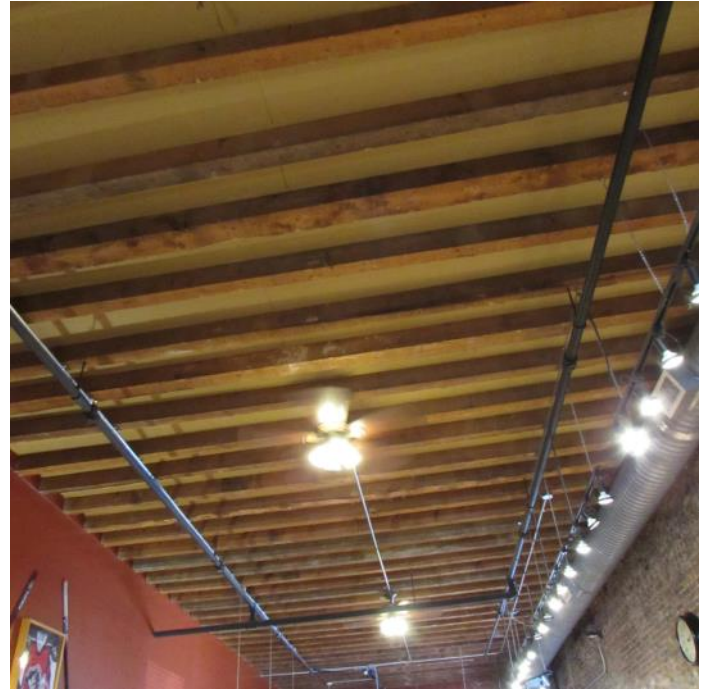
MALONE COMMERCIAL BROKERS
5 Moulton Street • Suite 3
Portland, ME 04101
207.772.2422 main

BRICK AND BEAM PHOTOS

6 CITY CENTER - PORTLAND, ME



OPTION TO HAVE EXPOSED BEAM AND BRICK



PETER HARRINGTON
207.772.0088 direct
207.358.7616 direct fax
peter@malonecb.com

MALONE COMMERCIAL BROKERS
5 Moulton Street • Suite 3
Portland, ME 04101
207.772.2422 main