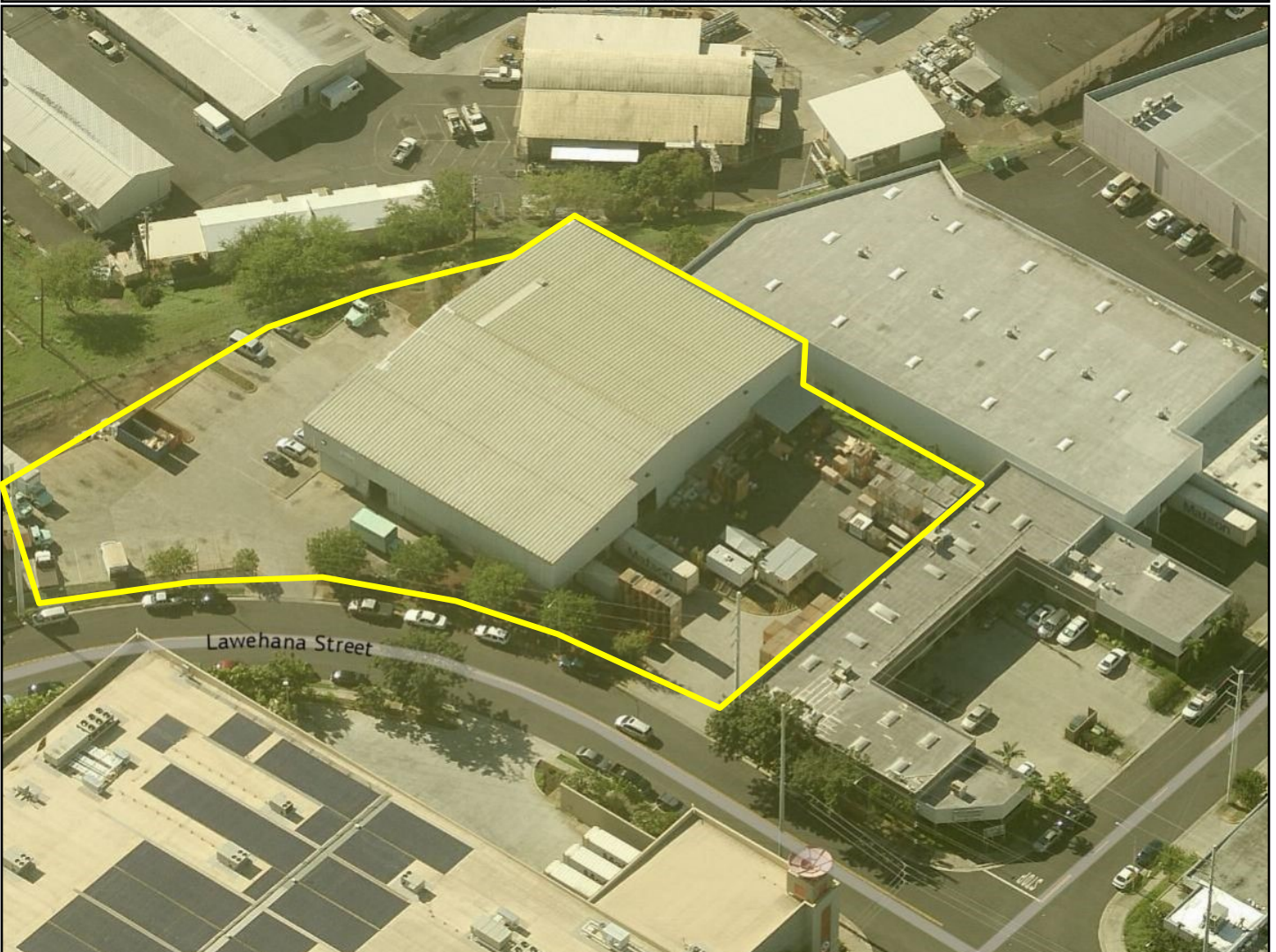


**4397 Lawehana Street, Honolulu, Hawaii**  
**1.6 Acre Lot + 20,500 sf Warehouse - FOR SALE (LH)**



**Kevin Y. Nishikawa, R, CCIM**  
EVP Commercial Division  
RB 17304  
Phone: (808) 220-9220 Cell  
kevin@marcusrealty.com







**4397 Lawehana Street, Honolulu, Hawaii**  
**1.6 Acre Lot + 20,500 sf Warehouse - FOR SALE (LH)**



**TAX MAP KEYS:** 1-9-9-71: 39,40,41

**PRICE:** **\$250,000 (LH)**

**LAND:** Parcel 39 - 23,149 sq. ft.  
 Parcel 55 - 25,783 sq. ft.  
 Parcel 65 - 21,097 sq. ft.  
**Total 70,029 sq. ft.**

**BUILDING:** **20,500 SF**  
 (incl. approx 2,500 sf office)

**TENURE:** **Leasehold**  
 (expires 6/30/2034)

- 7/1/19 - 6/30/22 \$507,205/yr.  
 - 7/1/22 - 6/30/25 \$577,350/yr.  
 - 7/1/25 - 6/30/29 \$664,016/yr.  
 - 7/1/29 - 6/30/34 TBD

**PROPERTY TAX:** \$7,668 per Month

**ZONING:** IMX-1

Prime, central location in the Bougainville neighborhood directly behind Target. Large 1.6 acre lot plus high-cube (25' - 30'), sprinklered warehouse with 3 recessed loading docks with levelers plus 2 drive-in bay doors. Lots of yard space. Approx. 2,500 sf of office/showroom. Lots of parking/staging area. Ground lease expires 2034 and rent is fixed through 6/30/2029. Approximately 1.5 miles from the Honolulu International Airport.

**EXCLUSIVE AGENT:**

**Kevin Y. Nishikawa, R, CCIM**  
 EVP Commercial Division  
 RB 17304  
 Phone: (808) 220-9220 Cell  
 kevin@marcusrealty.com





# 4397 Lawehana Street | For Sale (LH)

