



NAIExcel

COMMERCIAL REAL ESTATE SERVICES, WORLDWIDE

243 E. St. George Blvd. Suite 200
St George, Utah 84770
435.628.1609 | naiexcel.com

1230 S. 1900 E. | Washington, UT 84780

Curren Christensen
435.627.5752
currenc@naiexcel.com

Property Summary

LEASE PRICE **\$.85/SF/NNN**

SALE PRICE **\$779,000**

BUILDING SIZE | SQFT **6,000±**

LOT SIZE | ACRES **.78±**

YEAR BUILT **2020**

- New building for lease off Washington Dam Road
- Lease 3,000 or 6,000 SF
- 3-Phase power and yard space
- Convenient location
- Call Curren for additional info

FOR MORE INFORMATION



CLICK HERE

OR TEXT 19292 TO 39200



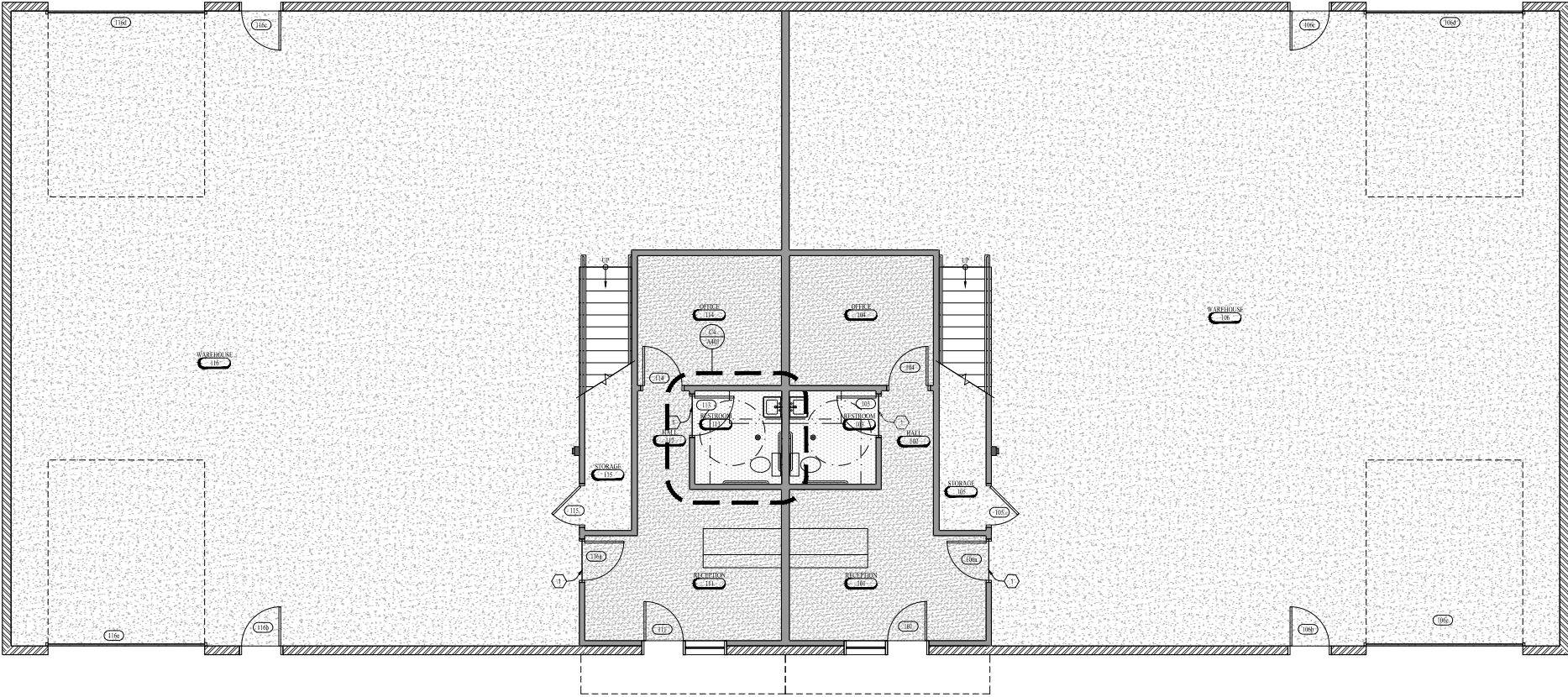
Area Map



Area Map



Floor Plan









Distance to Major Cities

Salt Lake City, Utah	301 MILES
Las Vegas, Nevada	120 MILES
Los Angeles, California	387 MILES
San Diego, California	449 MILES
Denver, Colorado	629 MILES
Phoenix, Arizona	421 MILES

Market Research

Our offices publish commercial and residential market research across Utah and Nevada. NAI Excel and NAI Vegas are known for their deep and rich data. Lending institutions, appraisers, and business consultants look to our market reports as the authority on commercial real estate market trends. We have built and maintained a comprehensive database comprised of data collected from some of the largest appraisal firms in the region, NAI transaction, and other data. NAI publishes statistics for the office, retail, industrial, and multifamily markets. Additionally, single family housing reports are published for every major market from Las Vegas to Salt Lake City, through our affiliate.

CLICK HERE



VIEW MARKET STATISTICS
FOR OFFICE, RETAIL,
INDUSTRIAL & MULTIFAMILY

<https://excelcres.com/market-research>

NAI Excel

COMMERCIAL REAL ESTATE SERVICES, WORLDWIDE

243 E. St. George Blvd. Suite 200
St George, Utah 84770
(435) 628.1609 | naiexcel.com

Curren Christensen
435.627.5752
currenc@naiexcel.com

This offering, including any related digital marketing, contains selected information pertaining to the Property and does not purport to be a representation of the state of the Property, to be all-inclusive, or to contain all or part of the information which interested parties may require to evaluate a purchase or lease of real property.

Neither the seller or NAI Excel, nor any of their respective directors, officers, Affiliates or representatives make any representation or warranty, expressed or implied, as to the accuracy or completeness of this Offering Memorandum or any of its contents, as to the financial performance of the property, or as to the condition of the Property, malfunctions or mechanical defects on the Property or to any improvements thereon, including but not limited to the material, workmanship or mechanical components of the structures, foundations, roof, heating, plumbing, electrical or sewage system, drainage or moisture conditions, air conditioning, or damage by the presence of pests, mold or other organisms, environmental condition, soils conditions, the zoning of the Property, the suitability of the Property for interested parties intended use or purpose, or for any other use or purpose.