

228 Ottley Drive NE

PROPERTY OVERVIEW

Atlanta, GA 30324

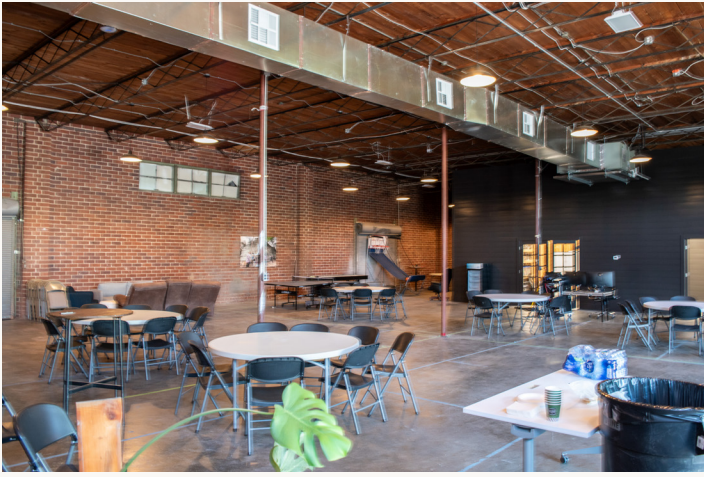
20,665 SF
Available

Existing Parking
Income

1.35
Acres

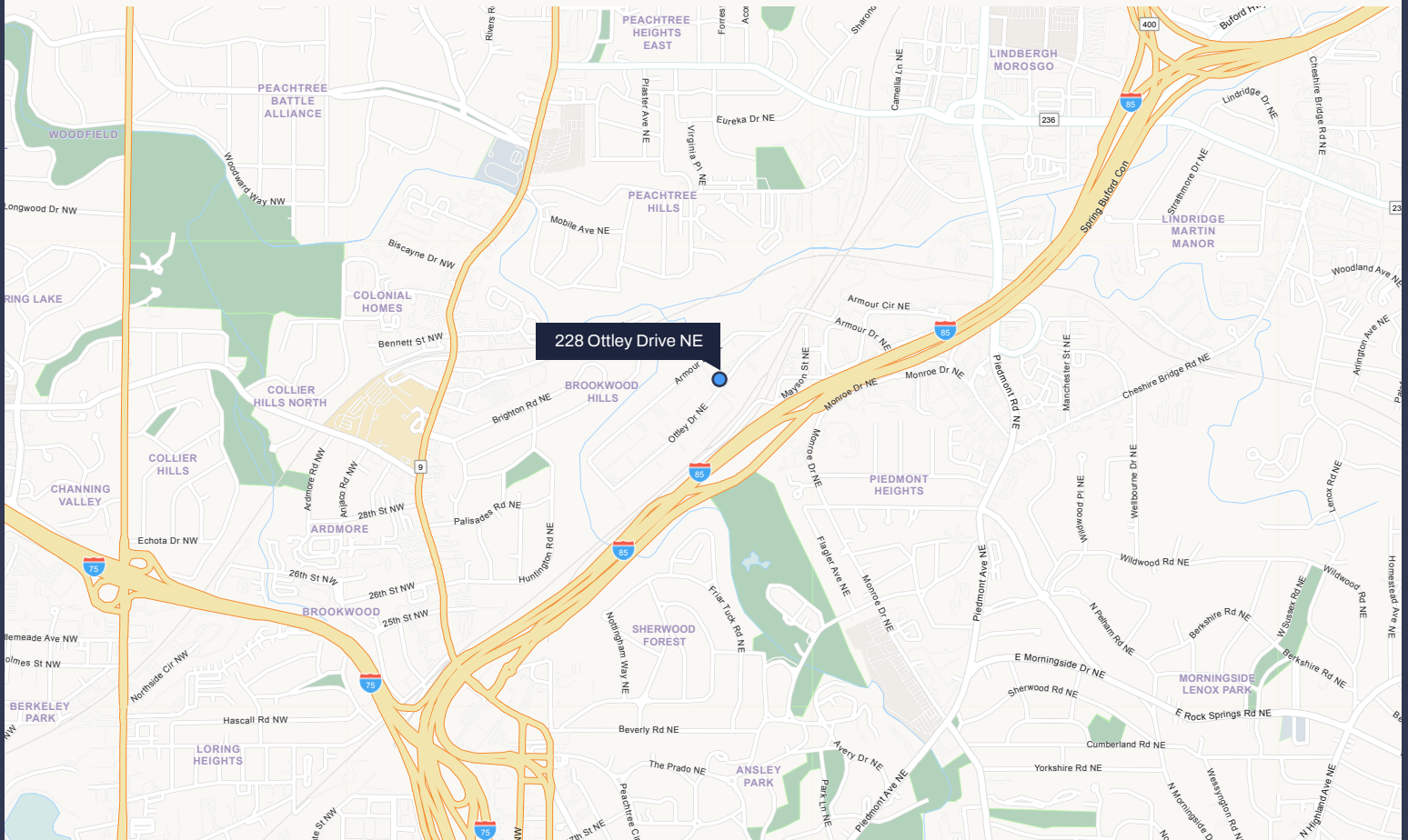
Showroom/
Warehouse/Offices





BUILDING FEATURES

- 17,891 SF Showroom/Warehouse
- 2,775 SF Second Floor Offices
- 1 Block to I-85 on/off ramp
- Full Office or Showroom Conversion Potential
- 3 Dock Doors
- 1 Oversized Drive-in Door
- 125± Parking Spaces
- 18' High Showroom



Austin Hibbard

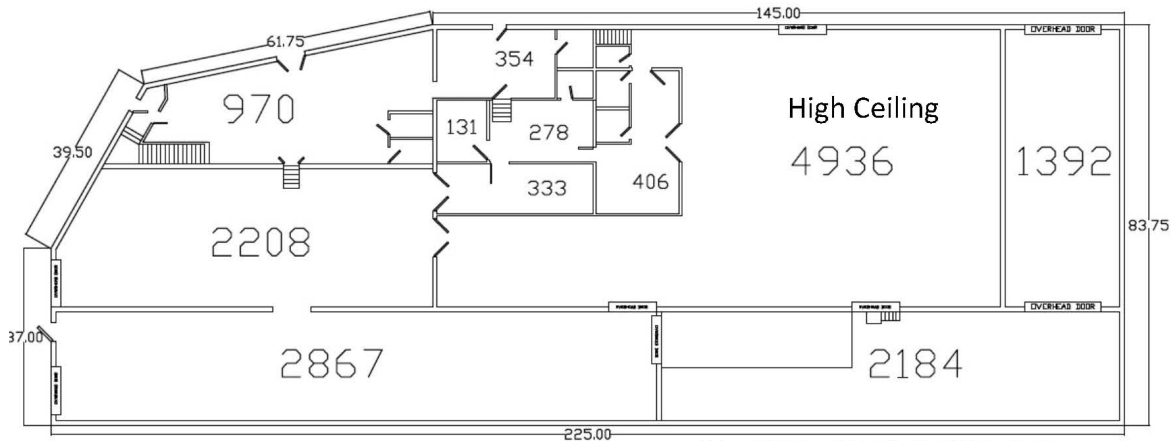
Vice President
 (404) 814-1525
austin.hibbard@transwestern.com

Bradley Fulkerson

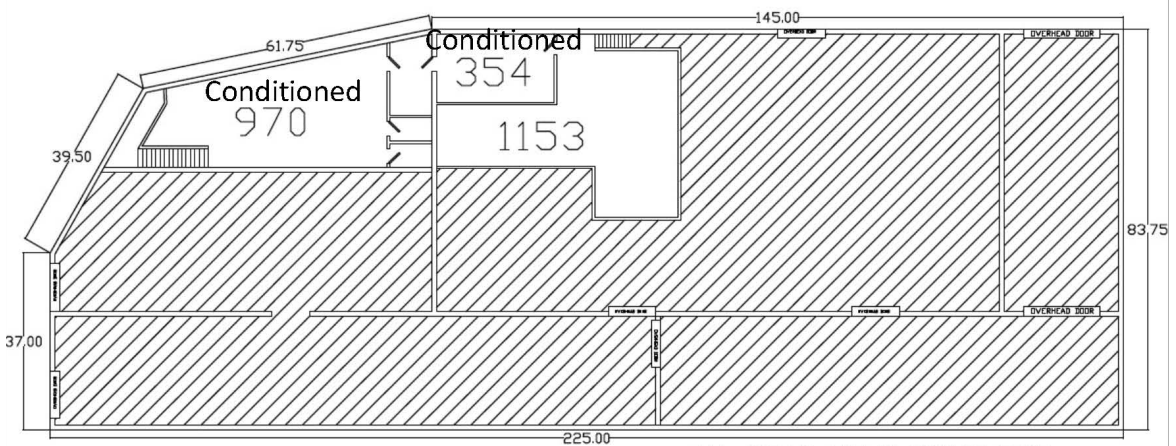
Senior Managing Director, Southeast
 (404) 842-6610
bradley.fulkerson@transwestern.com

First Floor: 17,891 SF

All Spaces Conditioned



Second Floor: 2,775 SF



Total: 20,665 SF



Austin Hibbard

Vice President
(404) 814-1525
austin.hibbard@transwestern.com

Bradley Fulkerson

Senior Managing Director, Southeast
(404) 842-6610
bradley.fulkerson@transwestern.com

