

DATA:

SITE: 3.61 ACRES
 ZONING: UR-H
 DENSITY ALLOWED: 25 UNITS / AC
 MULTI-FAMILY PARCEL = 2.91 AC
 MAX. UNITS ALLOWED = 72

3 BUILDINGS - 3 STORIES EACH

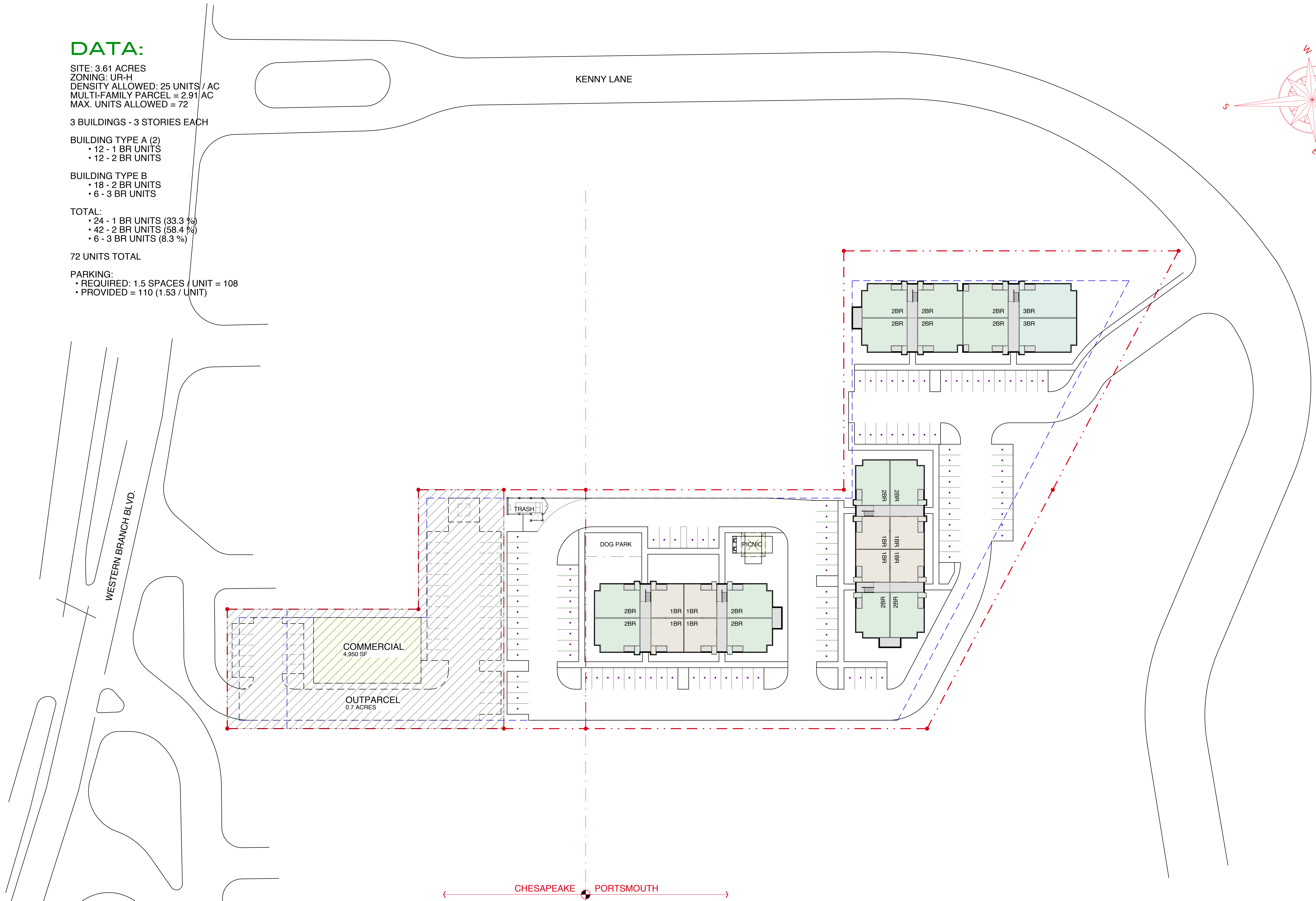
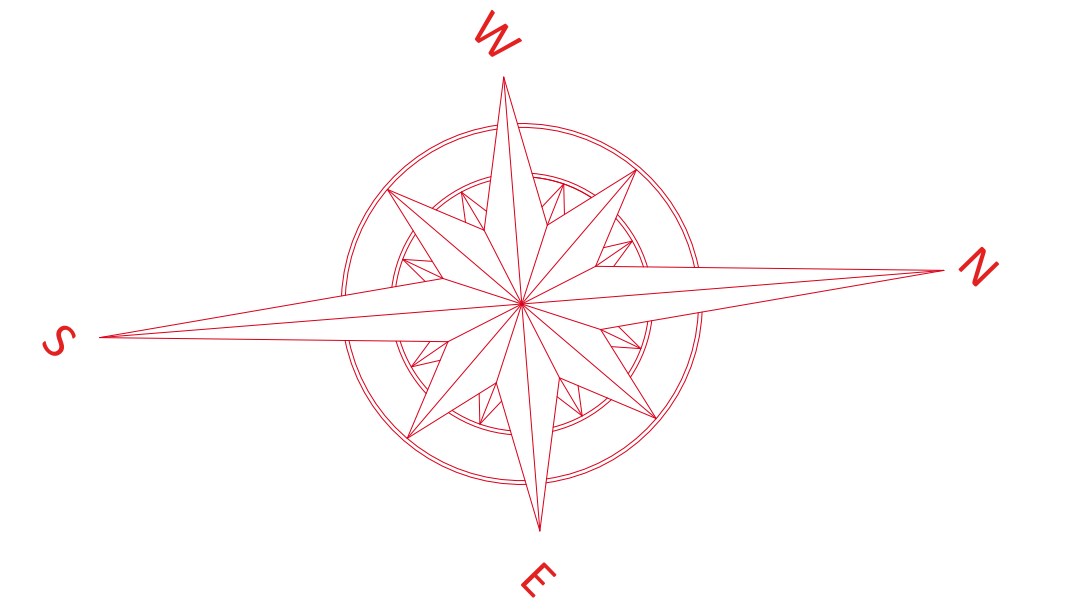
BUILDING TYPE A (2)
 • 12 - 1 BR UNITS
 • 12 - 2 BR UNITS

BUILDING TYPE B
 • 18 - 2 BR UNITS
 • 6 - 3 BR UNITS

TOTAL:
 • 24 - 1 BR UNITS (33.3 %)
 • 42 - 2 BR UNITS (58.4 %)
 • 6 - 3 BR UNITS (8.3 %)

72 UNITS TOTAL

PARKING:
 • REQUIRED: 1.5 SPACES / UNIT = 108
 • PROVIDED = 110 (1.53 / UNIT)



OPTION TWO

1. EXISTING ZONING INFORMATION, PROPERTY AND RIGHT-OF-WAY LINE SHOWN ON THESE PLANS WERE TAKEN FROM INFORMATION PROVIDED - NOT VERIFIED BY SURVEY OR INDEPENDENT RESEARCH.
 2. THIS PLAN IS CONCEPTUAL IN NATURE, AND IS NOT BASED UPON SURVEYED BOUNDARY LINES AND INFORMATION. IN AS MUCH, THE CONFIGURATIONS AND YIELD ARE APPROXIMATE AND MAYBE SUBJECT TO CHANGE.