

FOR SALE

Restaurant with Additional Outparcel

2144 SULLIVAN ROAD, COLLEGE PARK, GA 30337

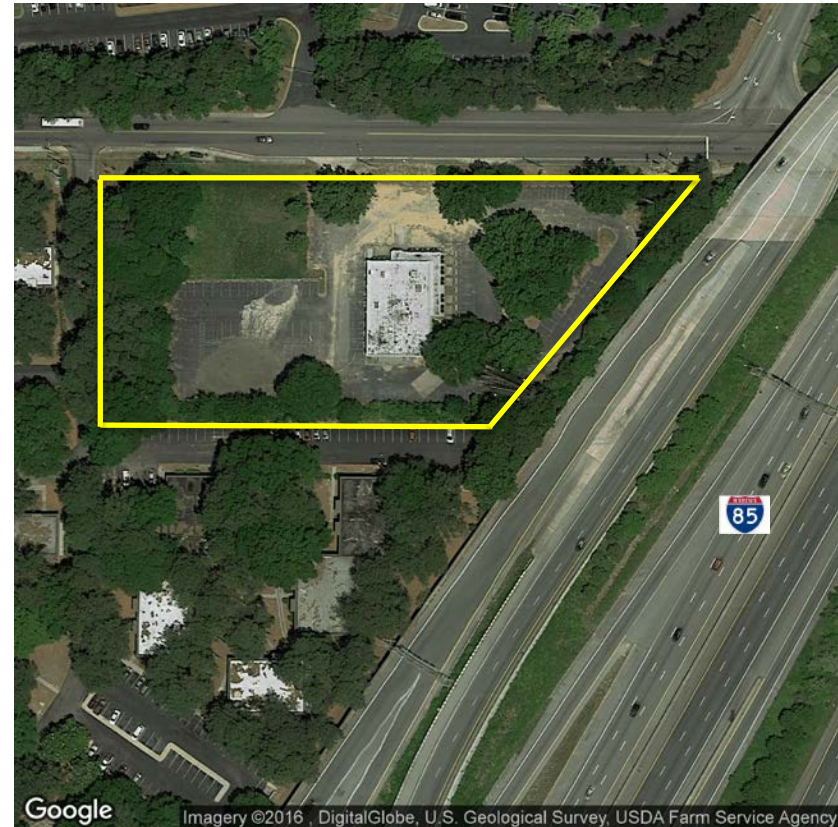
RETAIL



PROPERTY INFO

Hartsfield-Jackson Atlanta International Airport is located seven miles south of the central business district of Atlanta. It has been the world's busiest airport by passenger traffic since 1998. The airport is located mostly in unincorporated areas in Fulton and Clayton counties. The domestic terminal is served by MARTA's rail line.

- + Size: 2.765 acres
- + Zoned: C-2
- + Site can be subdivided
- + Located in a high demand, high occupancy airport location
- + Average daily traffic of 134,600 at I-85/I-285
- + Sullivan Road provides direct access, by the way of Airport View Road to Terminal Parkway and Hartsfield-Jackson Atlanta International Airport
- + Price: \$1,500,000



2016 DEMOGRAPHICS

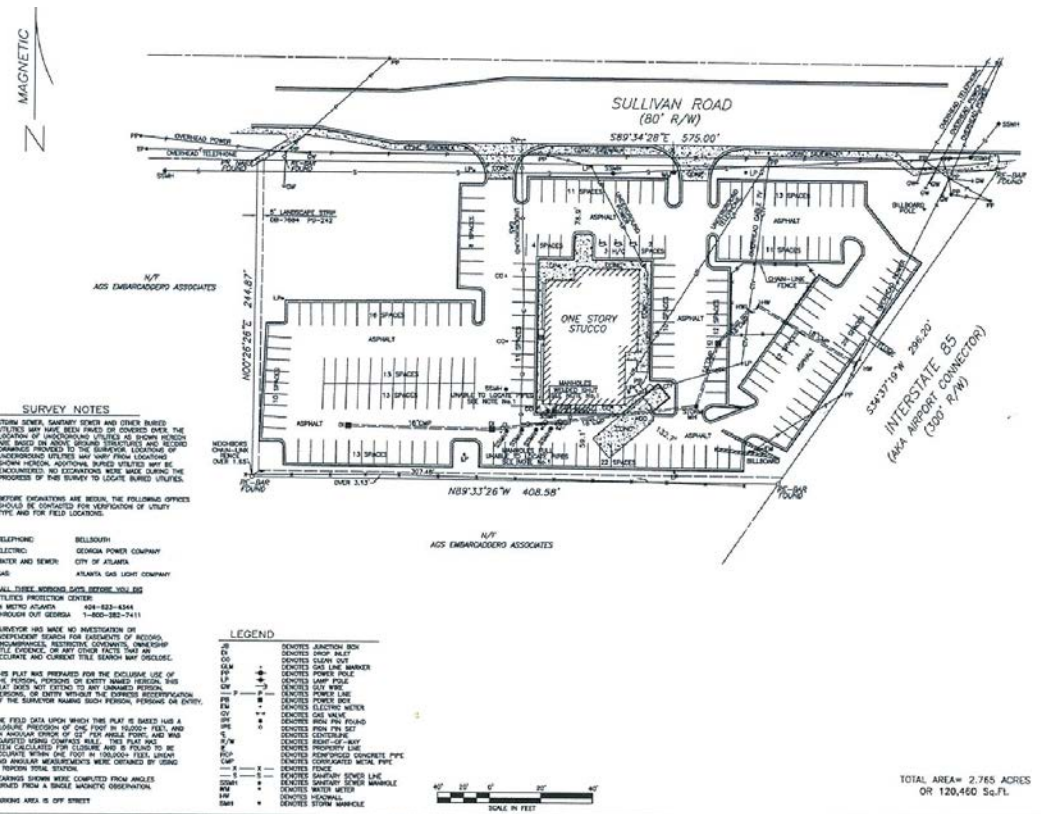
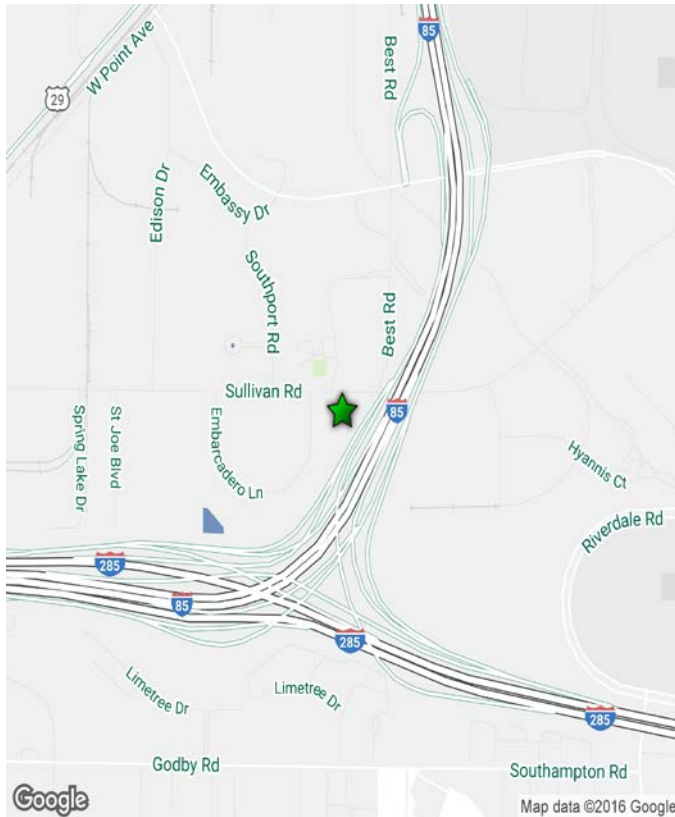
	1 Mile	3 Miles	5 Miles
Population	4,718	53,199	153,190
Average Household Income	\$44,972	\$48,350	\$50,265
Daytime Employment	5,843	43,005	105,992
	XX	XX	XX

FOR SALE

Restaurant with Additional Outparcel

2144 SULLIVAN ROAD, COLLEGE PARK, GA 30337

RETAIL



CONTACT US

Tony Cerniglia

Vice President
+1 404 923 1312
tony.cerniglia@cbre.com
Lic. 109269

CBRE, Inc

+1 303 504 7900
cbre.com/atlanta

© 2016 CBRE, Inc. This information has been obtained from sources believed reliable. We have not verified it and make no guarantee, warranty or representation about it. Any projections, opinions, assumptions or estimates used are for example only and do not represent the current or future performance of the property. You and your advisors should conduct a careful, independent investigation of the property to determine to your satisfaction the suitability of the property for your needs. Photos herein are the property of their respective owners and use of these images without the express written consent of the owner is prohibited. CBRE and the CBRE logo are service marks of CBRE, Inc. and/or its affiliated or related companies in the United States and other countries. All other marks displayed on this document are the property of their respective owners.

www.cbre.com/tony.cerniglia

CBRE