

The property is located in the heart of Mayfair with world class amenities. The immediate surrounding area is well known for the luxury shopping, five star hotels, exclusive restaurants and bars.

Communications are excellent with Green Park, Piccadilly, Bond Street and Oxford Circus underground stations all within easy walking distance providing access to the Piccadilly, Jubilee, Bakerloo, Victoria and Central line. These will be further enhanced by the opening of the nearby Bond Street Crossrail station in 2018/19.

The building is situated on the east side of Old Bond Street close to the junction with Burlington Gardens.

Old Bond Street is world renowned and recognised as one of the most prestigious addresses in Central London.



23 Old Bond Street, Mayfair, London W1. Offices to Let.

Terms

Lease

The accommodation is available on a new lease for a term by arrangement

Quoting Rent

Upon application

Possession

On completion of legal formalities

Viewing

By Appointment

Viewing and further information

**WILSON
McHARDY**

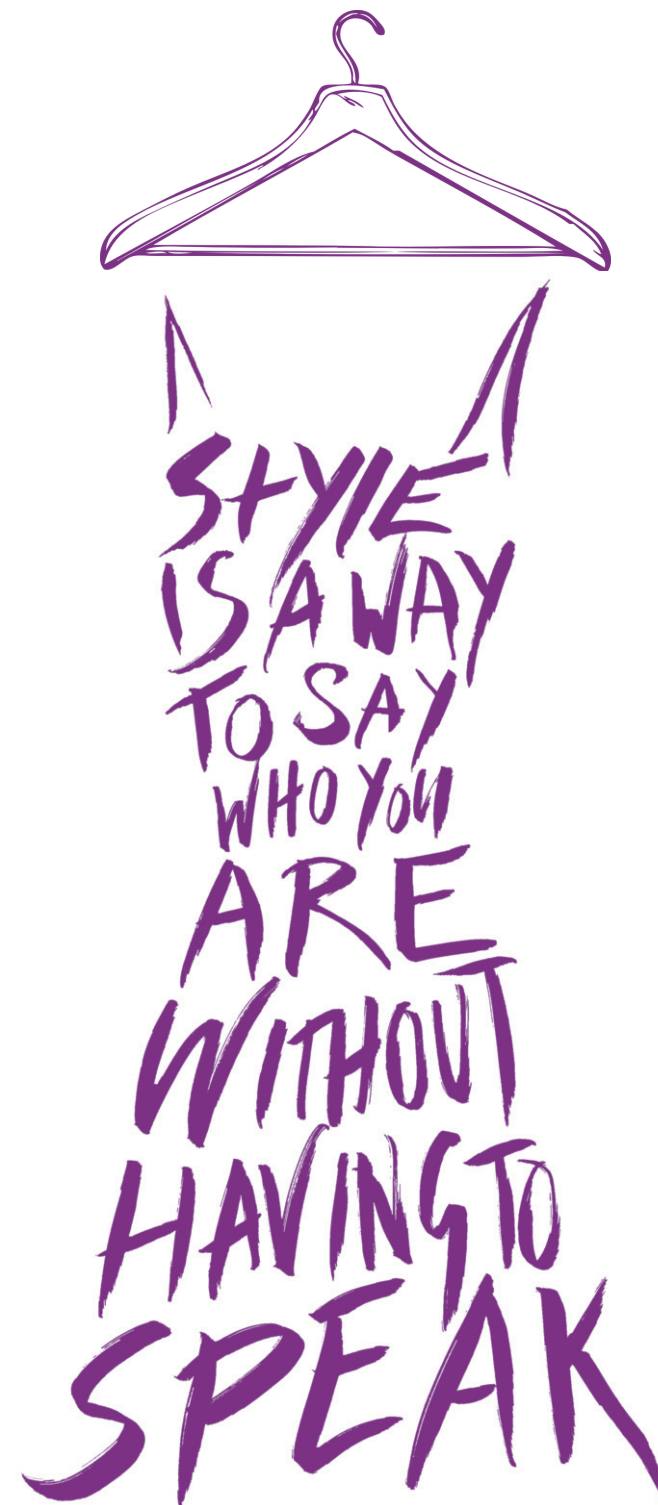
Ewan McHardy
ewan@wilsonmchardy.com

Keith T Wilson
keith@wilsonmchardy.com

Tel: 020 7439 1666

www.wilsonmchardy.com

Misrepresentation Act These particulars have been produced in good faith, are set out as a general guide and do not constitute the whole or part of any contract. All liability, in negligence or otherwise, arising from the use of the particulars is hereby excluded.
Computer Generated Images are for indicative purposes only and do not necessarily represent the finished design specification.



A More
Stylish
Office
Address

23 Old Bond Street,
Mayfair, London W1

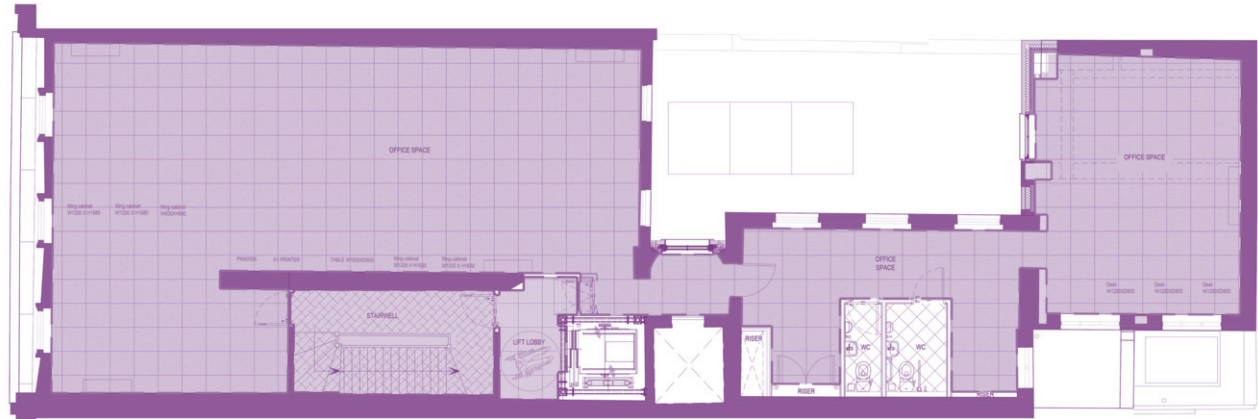
Schedule of Areas

The newly refurbished accommodation is situated on the 3rd, 4th and 5th floor levels with the following approximate floor areas:

Third	1,773 sq. ft	164.68 sq. m
Fourth	1,695 sq. ft	157.45 sq. m
Fifth	1,387 sq. ft	128.81 sq. m
<hr/>		
Total	4,855 sq. ft	450.94 sq. m



Fifth Floor 1,387 sq. ft | 128.81 sq. m



Fourth Floor 1,695 sq. ft | 157.45 sq. m



Third Floor 1,773 sq. ft | 164.68 sq. m

Newly refurbished prestigious offices’

1,387 sq. ft (128.81 sq. m) to 4,855 sq. ft (450.94 sq. m)



Computer generated images. The final finishes may vary.

The offices are located on the third to fifth floors of a period building which has recently been extensively refurbished to provide contemporary finishes combined with period features

- Air conditioning
- New passenger lift
- Refurbished entrance hall
- In floor trunking
- Video entry system
- Commissionaire in the main entrance lobby
- 24/7 fob access
- Good natural light
- Private WC



Computer generated images. The final finishes may vary.