

8945

South Harl Avenue,
Tempe, Arizona

±11,583 SF Available



PHIL HAENEL

Director
+1 602 224 4409
phil.haenel@cushwake.com

MIKE HAENEL

Executive Managing Director
+1 602 224 4404
mike.haenel@cushwake.com

ANDY MARKHAM, SIOR

Executive Managing Director
+1 602 224 4408
andy.markham@cushwake.com

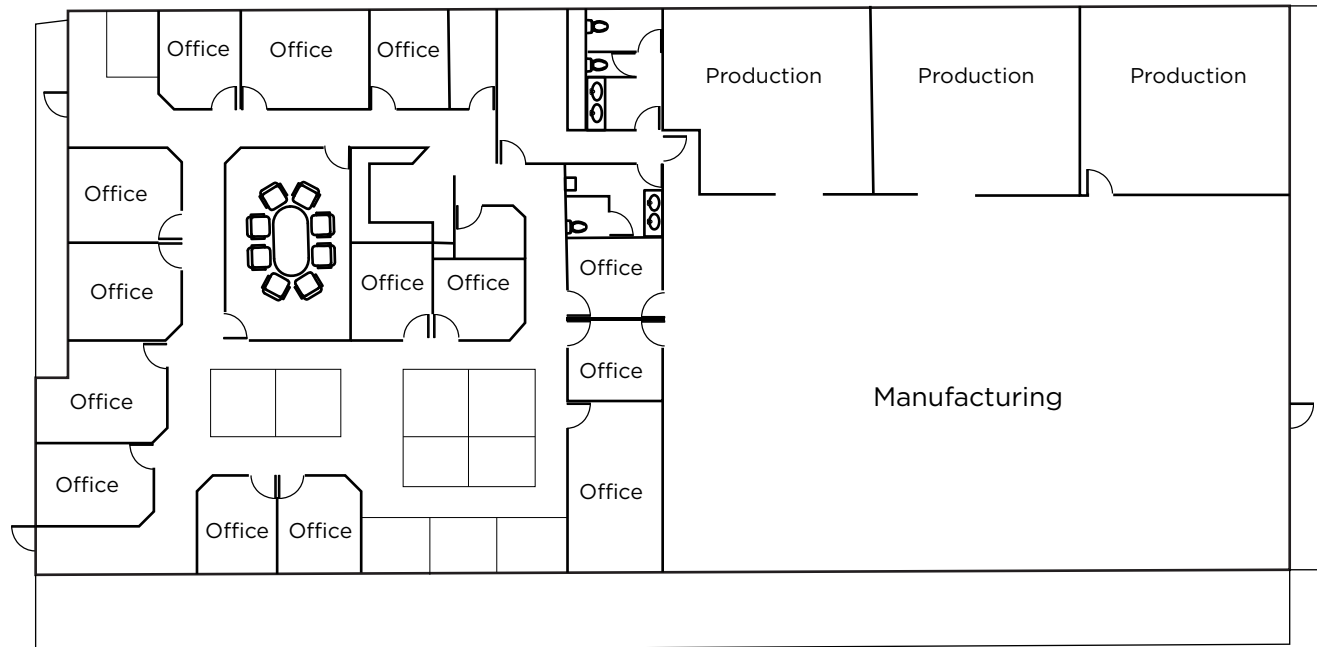


Property Features:

- Suite 108: ±11,583 SF
- Parking: 3.00/1,000
- Built: 2000
- Tempe Southwest Industrial Submarket
- Warehouse and Office
- 100% Spinklered
- Close proximity to I-10 Freeway



Site Plan:



PHIL HAENEL

Director
+1 602 224 4409
phil.haenel@cushwake.com

MIKE HAENEL

Executive Managing Director
+1 602 224 4404
mike.haenel@cushwake.com

ANDY MARKHAM, SIOR

Executive Managing Director
+1 602 224 4408
andy.markham@cushwake.com

