

1202 MARKET STREET
SAN DIEGO, CA.92101
TEL: (619) 239-8156
FAX: (619) 239-2686
www.fsdesigngroup.com

REVISION:

1	HEALTH REVISION 1.4.10
---	---------------------------

2706 5TH AVE
SAN DIEGO, CA 92103

PROJECT NAME:

FOODSERVICE EQUIPMENT
FLOOR PLAN

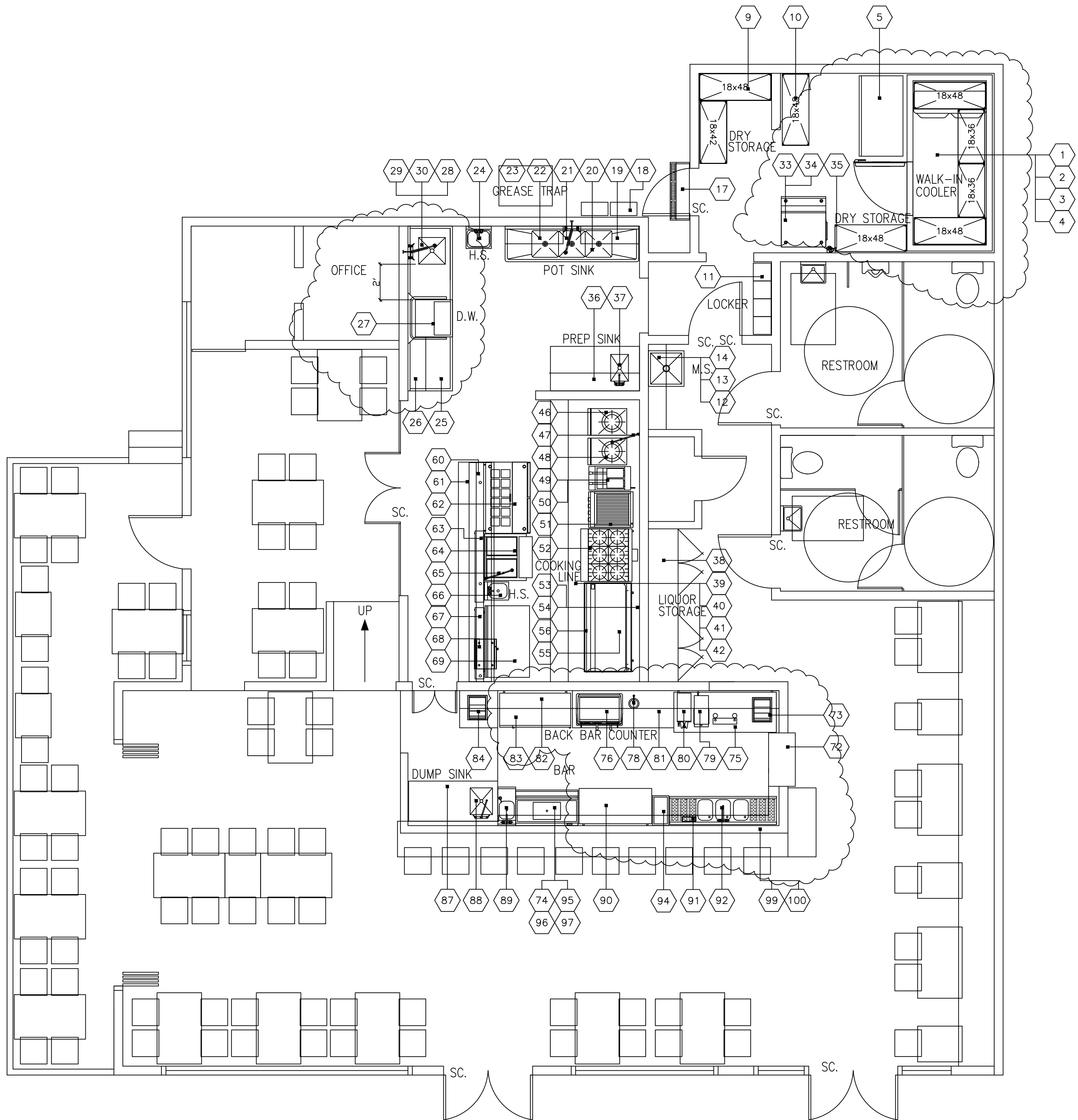
SHEET TITLE:

ATE: 10.28.09
CALE: 1/4"=1'-0"
ESIGNED BY: WK
RAWN BY: WK
ROJECT NO: 113709

SHEET NUMBER

FS-1

EQUIPMENT SCHEDULE																							
ITEM NO.	QTY	DESCRIPTION	AMPS	HWP	HP	VOLTS	PHASES	HEIGHT	NEMA	COLD WATER	HEIGHT	HOT WATER	HEIGHT	DIRECT DRAIN	HEIGHT	INDIR. DRAIN	HEIGHT	GAS SIZE (IN)	METH	HEIGHT	REMARKS		
1	1	MALK-IN COOLER W/LIGHT	VER			120	1 X	TOW													PRE-FABRICATED G.I. PANELS DRAINS TO F.S.		
2	1	MALK-IN COOLER COIL	VER			120	1 X	TOW							1/2"	F.S.					REMOVE, VERIFY LOCATION		
3	1	MALK-IN COOLER CONDENSER	VER			208	1 X	VER													WIRE TYPE W/EPOXY FINISH, 4-TERS PER SECTION		
4	1	MALK-IN COOLER SHELVING																			SELF-CONTAINED		
5	1	REACH-IN FREEZER	15.2			120	1 X	+48"													REMOVE, VERIFY LOCATION		
6		DMT													1/2"	F.S.					DRAINS TO F.S.		
7		DMT																			WIRE TYPE W/EPOXY FINISH, 4-TERS PER SECTION		
8		DMT																			5-TERS PER SECTION		
9	1L	DRIY STORAGE SHELVING																			5-TERS PER SECTION		
10	1L	DRIY STORAGE SHELVING																			PROVIDED BY OWNER		
11	1L	IMPOLITE LOCKERS																			STEEL TYPE PROVIDED BY KEC		
12	1	HOP AND BROOD PACK								1/2"	+36"	1/2"	+36"	3"	0"							STAINLESS STEEL, EXISTING	
13	1	LANTIONAL SHIP																			EXISTING, FLOOR MOUNTED 24" X 24" NON-POROUS, FAUCET WITH VACUUM BREAKER		
14	1	ICE BIN W/SERVICE FAUCET																					
15	-	SFAP# NUMBER																					
16	-	SFAP# NUMBER																					
17	1	AIR CURTAIN, LINEATED	3.8		0.75	208	1 X	+44"										3/4"	230.0	X	SEE HEALTH NOTE NUMBER 8 FOR DETAIL REQUIREMENT.PROVIDED BY KEC, INSTALLED BY G.C.		
18	2	WATER HEATER	1.0			120	1 X	#ROOF	10-50P	1"	VER										ONE EXISTING TANKLESS TYPE AND ONE NEW TANKLESS TYPE		
19	1	SELF - WALL MOUNTED													1 1/2"	F.S.					EXTENDING MIN 18" X 18" X 1/2" D WITH 18" DRAIN BOARD ON EACH SIDE AND 8" BACK SPLASH, DRAINS TO FLOOR SINK, MEETS EXP-883		
20	1	3-COMPARTMENT SINK																			ABLE TO REACH ALL 3-TUBES		
21	1	PRE-RINSE WITH ADDSD FAUCET								1/2"	+12"	1/2"	+12"									EXTENDING 35/OZ LBS CAPACITY	
22	1	SELF - WALL MOUNTED																			SOAP AND TOWEL DISPENSERS BY G.C., 12" SPLASH GUARD BY KEC		
23	1	DISCUSE TRIP								1/2"	+12"	1/2"	+12"	1 1/2"	+15"							STAINLESS STEEL	
24	1	SINK, HAND, WALL MOUNT																			STAINLESS STEEL		
25	1	CLEAN DISH TABLE																			EXTENDING, LOW TEMP, DRAINS TO FLOOR SINK		
26	1	WAREWASHER, DOOR TYPE, LOW TEMP	15.0			120	1 X	+64"	5-20P			3/4"	+58"		2"	F.S.					PART OF DSH TABLE DRAINS TO FLOOR SINK		
27	1	SCOWY SINK WITH DRAN BASKET													1 1/2"	F.S.					STAINLESS STEEL		
28	1	ROLDED DISH TABLE																			FOR SCAMP SINK		
29	1	PRE-RINSE FAUCET, WALL MOUNT								1/2"	+12"	1/2"	+12"										
30	-	SFAP# NUMBER																					
31	-	SFAP# NUMBER																					
32	-	SFAP# NUMBER																					
33	1	ICE BIN														1"	F.S.				DRAINS TO FLOOR SINK		
34	1	ICE MAKER	18.2			208	1 X	+60"		3/8"	48"					3/4"	F.S.				DRAINS TO FLOOR SINK		
35	1	FILTER SYSTEM, KEMAKER								1/2"	+80"											FOR ICE MAKER	
36	1	SELF - WALL MOUNTED																			STAINLESS STEEL		
37	1	PRESS SINK TABLE WITH FAUCET								1/2"	+12"	1/2"	+12"		1 1/2"	F.S.						EXTENDING, MEETS EXP-883, 5/8" DRAINS TO FLOOR SINK	
38	1	LUGGDS STORAGE SHELVING																			EXTENDING, MEETS EXP-883, 5/8" DRAINS TO FLOOR SINK		
39	1	EXISTING, EXHAUST HOOD W/LIGHT	5.0			120	1 X	TOH													5 SHELVES PROVIDED MIN. 48 LIN. FEET TOTAL		
40	1	EXHAUST ELIMVER	VER			208	1 X	RF													UL LISTED HOOD, STAINLESS STEEL		
41	1	MAKE-UP AIR SYSTEM	VER			208	1 X	RF													EXTENDING, VERIFY LOCATION ON THE ROOF		
42	1	FIRE PROTECTION SYSTEM	1.0			120	1 X	VER													VERIFY LOCATION, SPECIFICATIONS PER MECHANICAL ENGINEER		
43	1	REFRIGERATOR, REACH-IN, SHALLOW	3.85	0.33	115	1 X	X	+64"	5-20P												EXISTING, KEC TO PROVIDE/PROVIDE MODIFICATION PER NEW COOKING EQUIPMENTS		
44	-	SFAP# NUMBER																			SELF-CONTAINED		
45	-	SFAP# NUMBER																					
46	1	STOVE, BAKERS/CONNECTIONS/STOCK POT													1/2"	+45"							
47	1	FAUCET, POT FILLER, WALL MOUNT																			FOR STEAM TABLE		
48	1	STOVE, BAKERS/CONNECTIONS/STOCK POT																					
49	1	PIPER, DEEP FAT, GAS														3/8"	90.0	+12"				GAS TYPE	
50	2	FLYER SPLASH GUARD															3/4"	60.0	+30"			STAINLESS STEEL, 18" SPLASH GUARD	
51	1	GRIDDLE, UNDER-FIRE/GRAS WITH STAND															3/4"	60.0	+30"			GAS, INADANT TYPE, COUNTER TOP WITH STAND	
52	1	RANGE, OPEN BURNER, W/COV, 48X60				120	1 X	X	+24"	5-15P							3/4"	23.6	+30"			NATURAL GAS	
53	1L	GAS QUICK DISCONNECT																			VERIFY SIZE, LOCATION AND QUANTITY		
54	1	WALL FLUISING																				STAINLESS STEEL	
55	1	GRIDDLE, GAS															3/4"	120.0	+30"			GAS, COUNTER TOP	
56	1	REFRIGERATOR, SHORTY	8.1	0.33	115	1 X	X	+15"	5-15P								1/2"	40.0	VER.			SELF-CONTAINED	
57		DMT																			WALL MOUNTED, GAS		
58	-	SFAP# NUMBER																					
59	-	SFAP# NUMBER																					
60	1	DOUBLE OVER SHELF																				STAINLESS STEEL	
61	1	PICK-UP COUNTER																				STAINLESS STEEL	
62	1	REFRIGERATOR, SANDWICH/SALAD PREP	8.0			120	1 X	X	+15"	5-20P												SELF-CONTAINED	
63	1	HEAT LAMP	6.7	0.8		120	1 X	VER.															
64	1	STETAM TABLE	17.0			120	1 X	X	+15"	5-15P													
65	1	FAUCET, POT FILLER, WALL MOUNT																				DRAINS TO FLOOR SINK	
66	1	SINK, HAND, WALL MOUNT								1/2"	+12"	1/2"	+12"	1 1/2"	+15"								W/12" SPLASH GUARD, SOAP AND TOWEL DISPENSERS BY G.C.
67	1	MANNER, FOOD OVERHEAD	6.7	0.8		120	1 X	VER.															
68	1	MICROWAVE OVEN	12.4	1.0		120	1 X	X	+62"	5-15P													
69	1	REFRIGERATOR, UNDERCOUNTER	7.8	0.25	120	1 X	X	+15"	5-15P														SELF-CONTAINED
70	-	SFAP# NUMBER																					
71	-	SFAP# NUMBER																					
72	1	BAR GATE														X	F.S.					CUSTOM MLKWORK	
73	1	P.O.S. SYSTEM	5.0			120	1 X	X	+62"	5-15P													PROVIDED BY OWNER
74	1	UNDERBAR SPEED RAIL																					STAINLESS STEEL
75	1	BEER COOLER	8.5			120	1 X	X	+15"	5-15P						X	F.S.						DRAINS TO FLOOR SINK
76	1	ESPRESSO MACHINE	21.0	4.5		208	1 X	X	+60"	18-30P	3/8"	+45"			1 1/4"	F.S.							DRAINS TO FLOOR SINK
77		DMT																					
78	1	DIPPERWELL ASSEMBLY														3/4"	F.S.						DRAINS TO FLOOR SINK
79	1	2ED TEA BREWER	18.0	1.9		120	1 X	X	+60"	5-15P	1/4"	+45"											SELF-CONTAINED
80	1	COTTED MAKER, SATELLITE SYSTEM	18.3	2.2		120	1 X	X	+60"	5-15P	1/4"	+45"											SELF-CONTAINED
81	1	BACK BAR COUNTER AND TOP																					CUSTOM MLKWORK, VERIFY DESIGN W/OWNER
82	1	BACK BAR UPPER CABINET																					CUSTOM MLKWORK, VERIFY DESIGN WITH OWNER
83	1	BACK BAR COOLER	10.3			120	1 X	X	+15"	5-15P													SELF-CONTAINED
84	1	P.O.S. SYSTEM	5.0			120	1 X	X	+62"	5-15P													PROVIDED BY OWNER
85	-	SFAP# NUMBER																					
86	-	SFAP# NUMBER																					
87	1	STAINLESS STEEL TABLE WITH DUMP SINK								1/2"	+12"	1/2"	+12"		1 1/2"	F.S.							STAINLESS STEEL, MEETS EXP-883, DRAINS TO FLOOR SINK
88	1	FAUCET, SINK MOUNT																					FOR DUMP SINK
89	1	UNDERBAR HANDSINK	10.0			120	1 X	X	+15"	5-15P	1/2"	+12"	1/2"	+12"	1 1/2"	+15"							SOAP AND TOWEL DISPENSERS BY G.C.
90	1	INNER COUNTER REFRIGERATOR	7.0			120	1 X	X	+15"	5-15P													SELF-CONTAINED
91	1	3-COMPARTMENT BAR SINK								1/2"	+12"	1/2"	+12"		1 1/2"	F.S.							NEW TOWEL RACK WITH TWO INTERIOR 18" DRAIN BCS EACH SIDE AND A 3" BACK SPLASH
92	1	DISH DRAIN													X	F.S.							MEETS THE DRAIN DRAINS TO FLOOR SINK
93		DMT																					DRAINS TO FLOOR SINK
94	1	MILK JIM																					
95	1	CARBONATOR	5.0			120	1 X	X	+12"	1/2"	+12"				1/2"	F.S.							DRAINS TO FLOOR SINK W/BACKFLOW PREVENTER, PROVIDED BY PURVEYOR
96	1	UNDERBAR ICE CHEST	1.0			120	1 X	X	+39"						X	F.S.							WITH BUILT-IN COLD PLATE, DRAINS TO FLOOR SINK
97	1	SODA GUN																					



NOTE:
ALL DOORS AND WINDOWS ARE EXISTING TO REMAIN.
WINDOWS ARE FIXED.
DOORS ARE SELF CLOSING AND LOCKABLE.