

# Corporate Office Sublease



## 11624 E. Shea Boulevard Scottsdale, AZ 85259

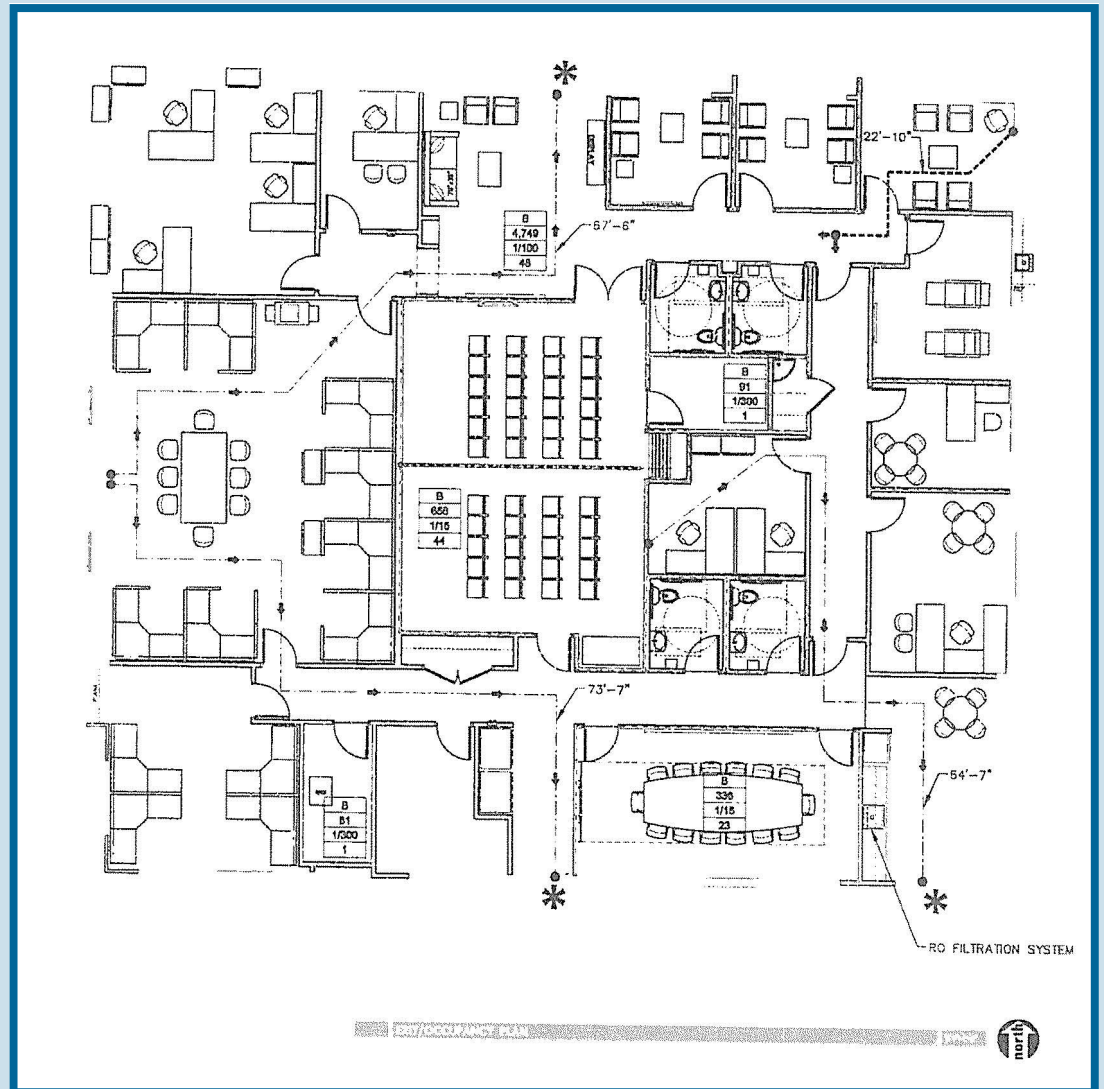
### For Further Information Contact:

**Steve Sapunor**  
Senior Vice President  
BRE Lic. 00969040  
Off: 424.653.1101  
Cell: 323.610.8282  
[sapunor@crealty.com](mailto:sapunor@crealty.com)

- ◆ Entire Building of Approximately 5,912 RSF (possibly divisible)
- ◆ Base Rent - \$14.00 NNN
- ◆ Sublease term through December 17, 2023
- ◆ 3/1000 Free Surface Parking
- ◆ Negotiable Occupancy
- ◆ Floor Plan on reverse

# 11624 E. Shea Boulevard Scottsdale, Arizona

## Floor Plan



For Further Information  
Contact:

**Steve Sapunor**  
Senior Vice President

BRE Lic. 00969040

Off: 424.653.1101

Cell: 323.610.8282

[sapunor@crarealty.com](mailto:sapunor@crarealty.com)