



**CUSHMAN &
WAKEFIELD**

FOR LEASE

PINEVILLE TOWNE CENTRE

600 Towne Centre Blvd.
Pineville, NC 28134

FEATURES:

- 50,000 SF mixed-use building
- Parking Ratio: 4 per 1,000 SF
- Exterior building signage and monument signage with excellent visibility
- Conveniently located just off I-485 (Exit 64), South Blvd./Polk St. and Highway 51
- Walking distance to Carolina Place Mall and numerous retail & restaurant amenities



Contact Information:

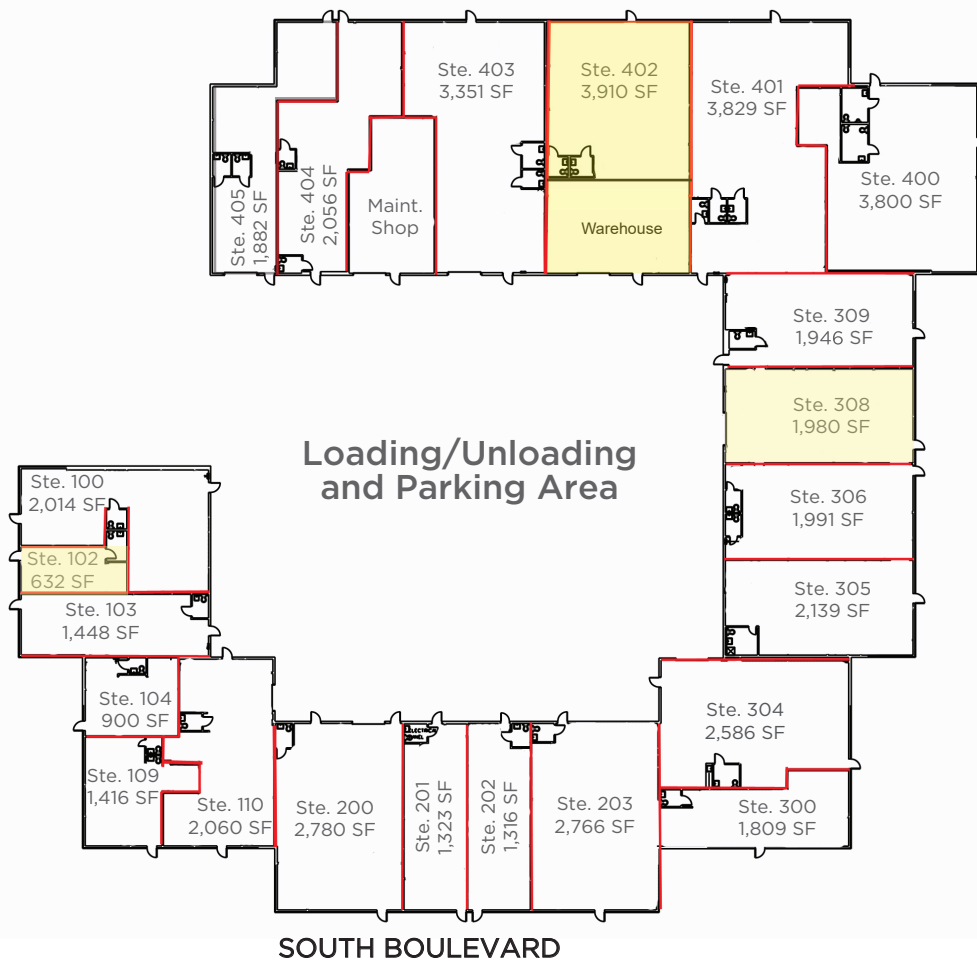
Erin Turulski
+1 704 916 1565
erin.turulski@cushwake.com

Andrew DeLamielleure
+1 704 887 3020
andrew.delamielleure@cushwake.com

Charlotte Office
300 South Tryon Street, Suite 1110
Charlotte, NC 28202
cushmanwakefield.com

PINEVILLE TOWNE CENTRE

600 Towne Centre Blvd. | Charlotte, NC 28217



Contact Information:

Erin Turulski

+1 704 916 1565

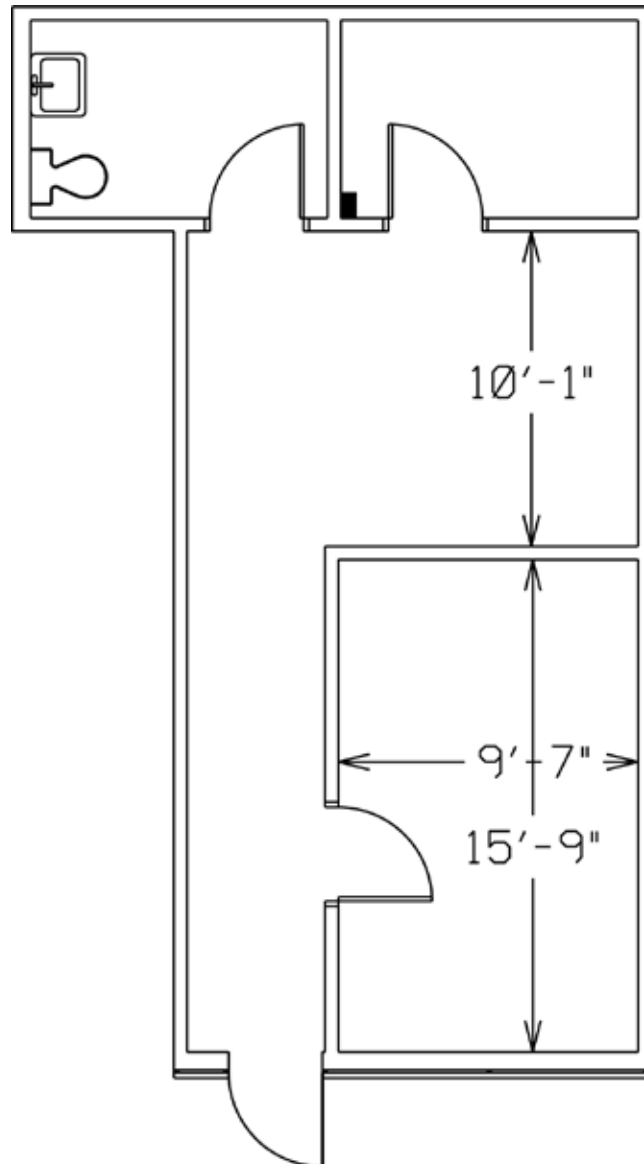
erin.turulski@cushwake.com

Andrew DeLamielleure

+1 704 887 3020

andrew.delamielleure@cushwake.com

AVAILABLE: 12/31/2024

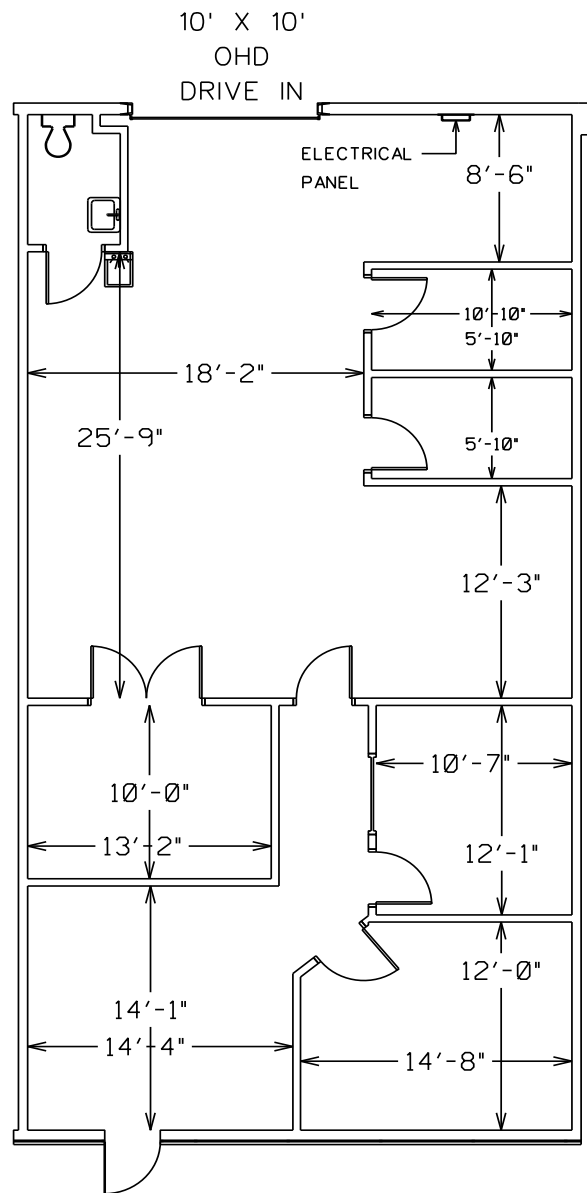


Suite 102
632 SF
DRIP LINE

Contact Information:

Erin Turulski
+1 704 916 1565
erin.turulski@cushwake.com

Andrew DeLamielleure
+1 704 887 3020
andrew.delamielleure@cushwake.com



SUITE 308
1,980 SF
947 SF OFFICE
1,033 SF WAREHOUSE
DRIP LINE

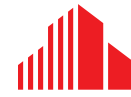
Contact Information:

Erin Turulski
+1 704 916 1565
erin.turulski@cushwake.com

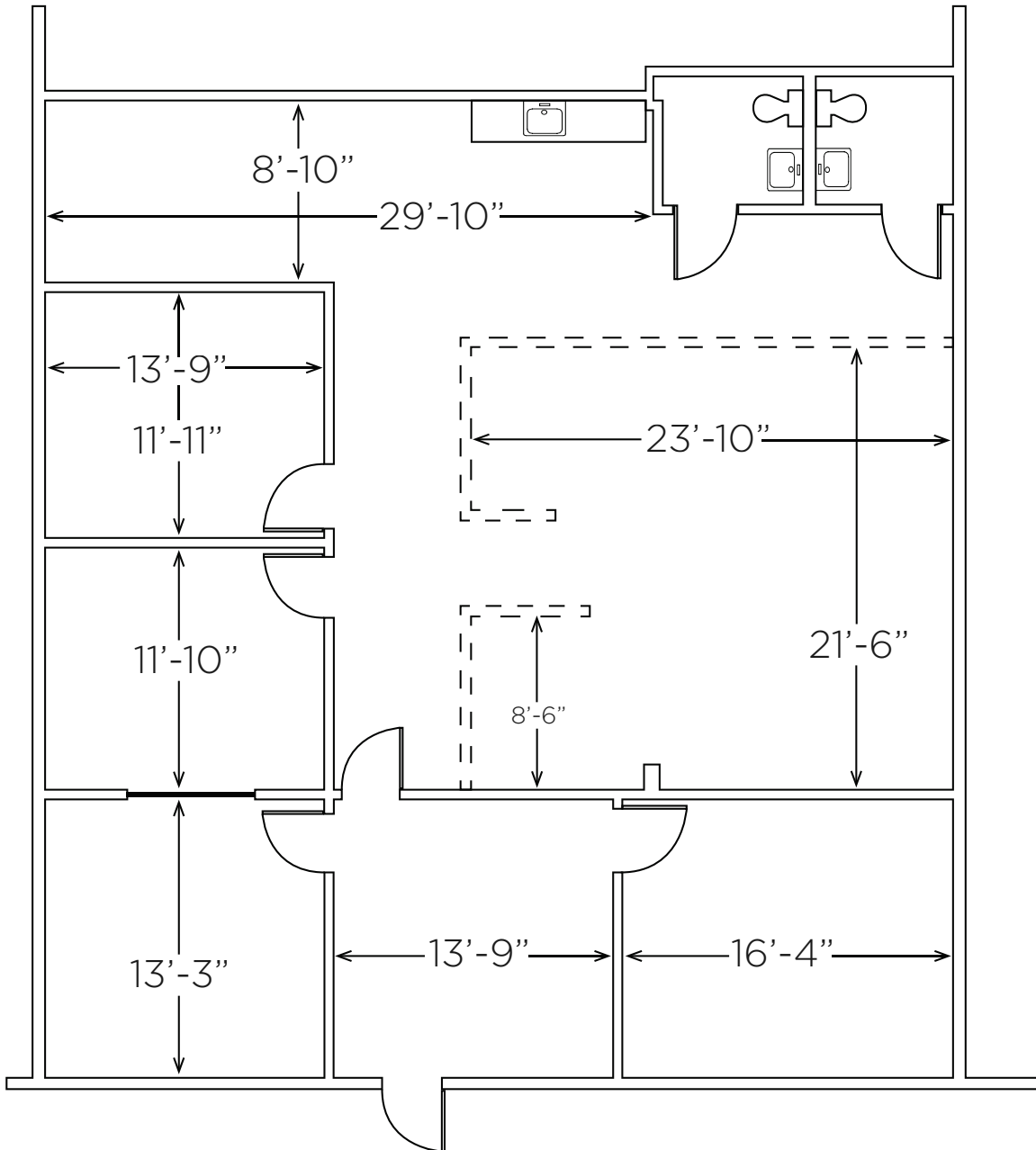
Andrew DeLamielleure
+1 704 887 3020
andrew.delamielleure@cushwake.com

PINEVILLE TOWNE CENTRE

600 Towne Centre Blvd. | Charlotte, NC 28217



CUSHMAN &
WAKEFIELD



SUITE 402
3,910 SF OFFICE
DRIP LINE

Contact Information:

Erin Turulski

+1 704 916 1565

erin.turulski@cushwake.com

Andrew DeLamielleure

+1 704 887 3020

andrew.delamielleure@cushwake.com

300 South Tryon Street, Suite 1110

Charlotte, NC 28202

+1 704 375 7771 cushmanwakefield.com

©2023 Cushman & Wakefield. All rights reserved. The information contained in this communication is strictly confidential. This information has been obtained from sources believed to be reliable but has not been verified. NO WARRANTY OR REPRESENTATION, EXPRESS OR IMPLIED, IS MADE AS TO THE CONDITION OF THE PROPERTY (OR PROPERTIES) REFERENCED HEREIN OR AS TO THE ACCURACY OR COMPLETENESS OF THE INFORMATION CONTAINED HEREIN, AND SAME IS SUBMITTED SUBJECT TO ERRORS, OMISSIONS, CHANGE OF PRICE, RENTAL OR OTHER CONDITIONS, WITHDRAWAL WITHOUT NOTICE, AND TO ANY SPECIAL LISTING CONDITIONS IMPOSED BY THE PROPERTY OWNER(S). ANY PROJECTIONS, OPINIONS OR ESTIMATES ARE SUBJECT TO UNCERTAINTY AND DO NOT SIGNIFY CURRENT OR FUTURE PROPERTY PERFORMANCE.