



Playa

DISTRICT

Rethink
where you
think

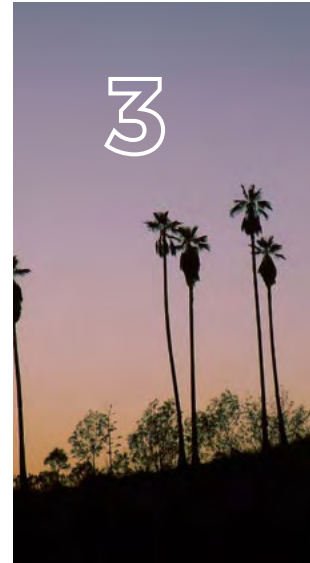


Playa District is an agile campus built to attract talent by providing the flexibility to grow, and spaces to thrive.

Playa District is transforming into a modern work environment. A true metamorphosis of not just the built environment, but also the intangible components that truly enhance the work place experience. Inspired by the coastal Southern California lifestyle, Playa District excites and inspires today's progressive tenant base through innovative workspaces, varied social gathering areas, and collaborative amenity offerings.

**6601 / 6701 / 6100 / 6080 / 6060
Center Drive Los Angeles, CA 90045**





A campus built to extend your company's footprint

1 1.4 MM square foot 33 acre campus provides growth flexibility and a variety of open space options that tenants crave.

2 Above standard parking.

3 Located in Playa Vista and the adjacent pool of pioneering organizations.

4 Convenient and immediate access to the 405 Freeway and LAX.

5 Opportunity for signage in one of the most prominent areas in LA basin; additional campus branding options.



Complete transformation of the environment



shade structure

citrus grove

shade structure

foodtruck area

firepit lounge

basket/pickle ball court

indoor / outdoor cafe

outdoor bbq

event plaza

hammock green

occupiable berm

the boardwalk

chaparral dune

the boardwalk

bocce ball court



Activated spaces that inspire & build community

inspirational art

designed to inspire community

designer furniture & fixtures

onsite café

upgraded lighting

indoor

outdoor

designer touches throughout

communal work space

4 | 6080

lobby view





Beautifully upgraded spaces that shape a memorable first impression

- 1 Beautifully reconfigured and refinished lobbies in all five office buildings.
- 2 Prominent signage posts makes it easy-to-navigate the campus
- 3 Upgraded hardscape/landscape and new outdoor gathering zones at both the north & south campus clusters.
- 4 High quality furniture, fixtures & accents to enhance the campus experience.



onsite gym



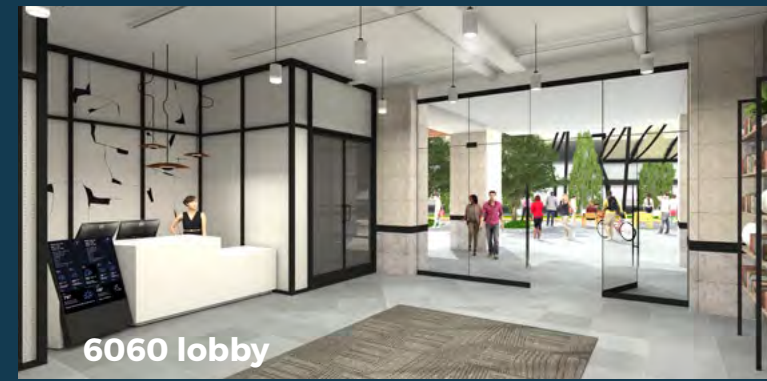
onsite gym



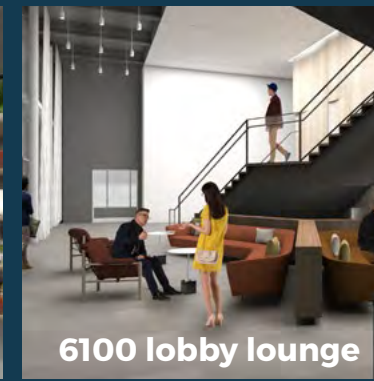
6601 lobby



6100 lobby lounge



6060 lobby



6100 lobby lounge



6701 lobby



6060 exterior



6080 exterior

An interconnected campus experience

adaptable environments

architectural enhancements throughout

indoor



outdoor

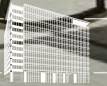
outdoor works and meeting spaces

connected via wifi and campus app

landscape and hardscape with purpose

3 | 6100

exterior view



A new standard in lifestyle and wellness amenities

1 Tenant concierge programs

2 On-site fitness center and yoga

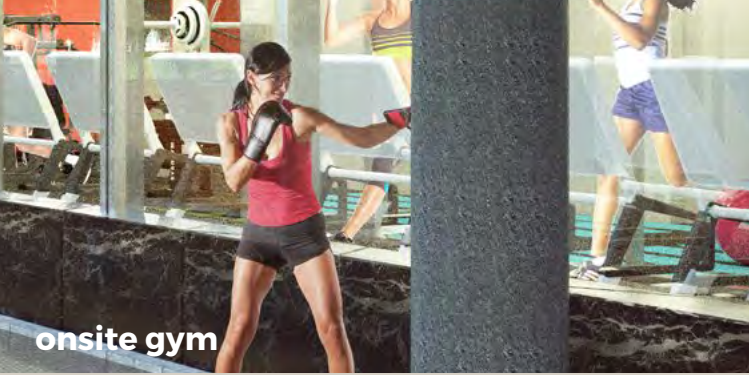
3 Bike lockers and on-site bike sharing program

4 Quality on-site dining options including daily food trucks and a top notch farmers market

5 Outdoor activity centers include volleyball, basketball, bocce ball, and pickle ball courts, as well as a multi-purpose turf activity field

6 Dog-friendly campus





onsite gym



social stairway



integrated food trucks



onsite cafe



trailways



patio experiences



citrus grove



fire pits



activated outdoors

Activated outdoor areas

shade structure

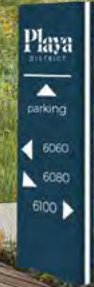
outdoor bbqs

food truck area

parking

improved wayfinding

fire pits





A community that helps attract, support and retain employees

Whether you're looking for a social space, or a more introspective moment, Playa District's thoughtfully designed areas flow seamlessly from inside to outside.

By designing for different workstyles, for varying group sizes, and for the natural rhythms of the day, the campus gives tenants work experiences that extend far beyond their office doors.

Working for you

sculptural
wall lighting

pendant
lighting

indoor

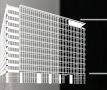
outdoor

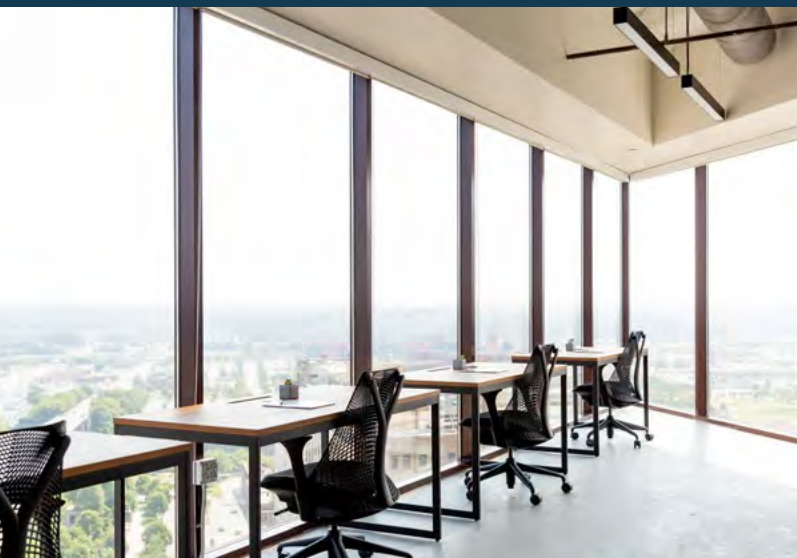
high perch

front desk

pet friendly

3 | 6100
lobby view





Playa District has partnered with Industrious, the largest premium co-working and flexible workplace provider in the US, to offer a full array of space options

From long-term, traditional leases to modern co-working and turnkey build out solutions.


Designed to meet the needs of companies at every stage and of any size.




INDUSTRIOUS

A unified campus


1 | 6601
north campus




dog walk area



outdoor patio



gym



3 | 6100
south campus



event plaza




citrus grove



2 | 6701
north campus



social stair



4 | 6080
south campus



shade structure




outdoor bbq




indoor / outdoor cafe



gym



shade structure



seating area



outdoor lounge



occupiable berm



the boardwalk



boce ball court



hammock green



chaparral dune



5 | 6060
south campus



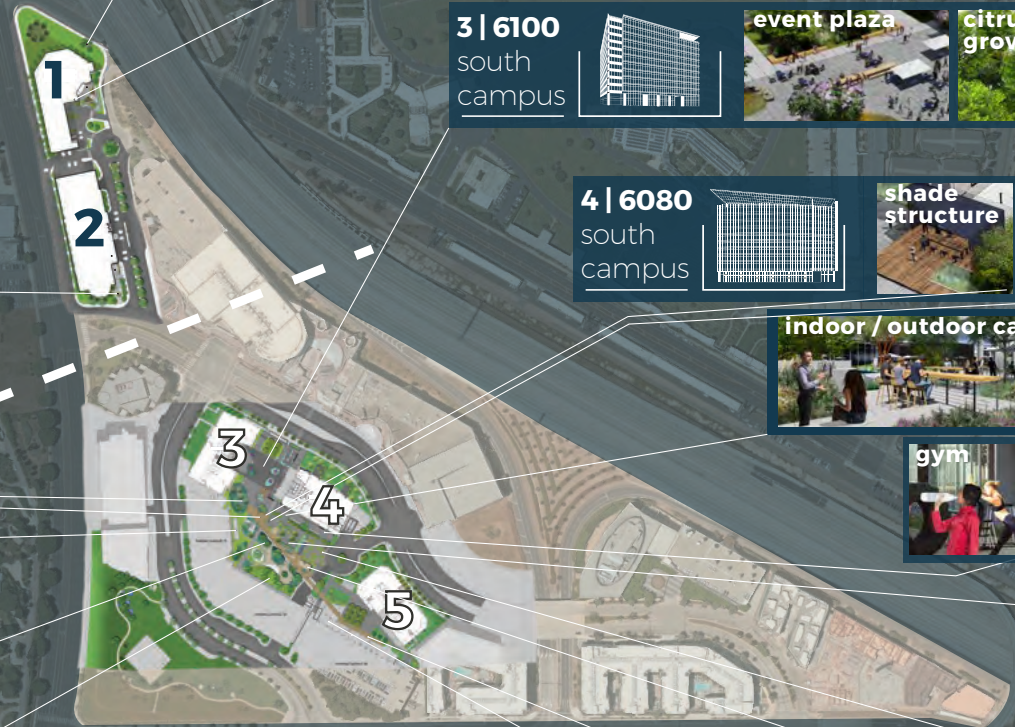
basket/pickle ball court



firepit lounge



food truck area

Won't you be my neighbor?



6 miles PACIFIC OCEAN

SANTA MONICA 9 miles

CENTURY CITY 8 miles

MARINA DEL REY

Villa Marina

VENICE

Thrive Market

Electronic Arts
Pop Network
Vevo
8i
Deutsch

Omnicon
facebook

Tom's Shoes
TBWA\Chiat\Day

Sony
TMZ

The Runway
Google

IMAX
Screen

TESLA

Honest Co.
Group M

WeWork

USC Institute for
Creative Technologies

Loyola Marymount
University
Microsoft
Team One
Verizon Edgecast

YouTube

Fox Sports
Rubicon

72 and Sunny

ICANN
Belkin

Yahoo

Clippers

CULVER CITY 5 miles

PLAYA VISTA



90

I-405

Westfield Culver

Symantec
Ares

Meredith
XPRIZE Foundation
Sony
Thomson Reuters
Syska Hennessy
Dentsu
Hankel
Red Light
Promt



Playa
DISTRICT

- Playa District
- Office Tenants
- Retail Centers
- Residential

**I don't think of work as work
and play as play. It's all living.**

— sir richard branson

Playa
Playa
DISTRICT



EQ Office



INDUSTRIOUS

Josh Wrobel

+1 310 595 3648

Josh.Wrobel@am.jll.com

License #01237972

Carl Muhlstein

+1 213 239 6055

carl.muhlstein@am.jll.com

License #00595250

Hayley English Blockley

+1 213 239 6054

hayley.blockley@am.jll.com

License #01781682

Jaclyn Ward

+1 310 595 3618

jaclyn.ward@am.jll.com

License # 01912455

Peter Hajimihalis

+1 213 239 6399

peter.hajimihalis@am.jll.com

License #01994663