

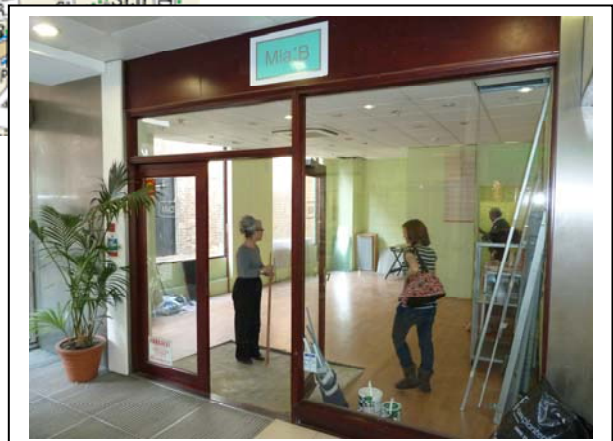
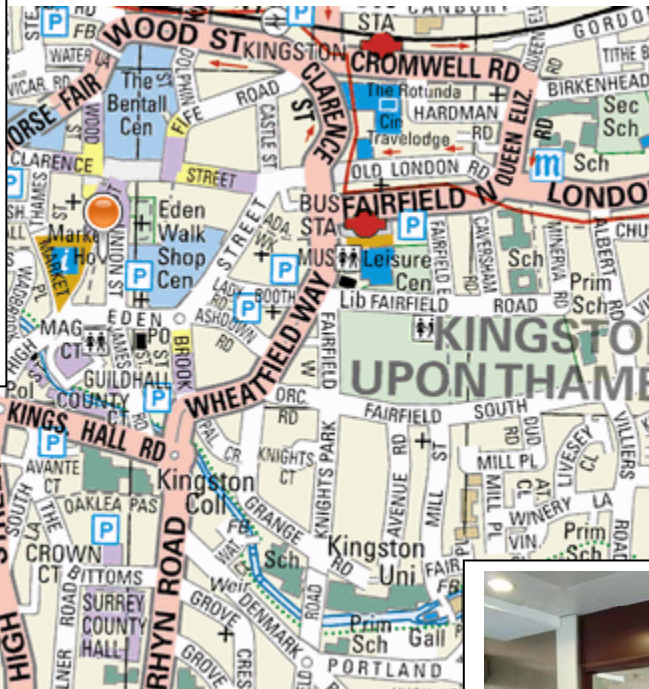
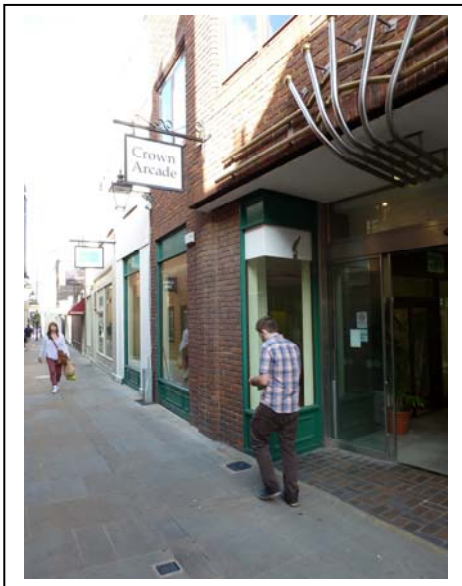
Commercial Property Consultants
Warwick Lodge
75-77 Old London Road
Kingston-upon-Thames Surrey KT2 6ND

Fax 020 8541 1360
E-mail property@bonsors.com
www.bonsors.com



TO LET

*Town Centre Lock Up Shop
approx 331 sq ft (30.75 sq m)*



*Unit E
Crown Arcade
Kingston upon Thames KT1 1JB*

**Unit E Crown Arcade
Kingston upon Thames KT1 1JB**

Location: Kingston upon Thames is a regional shopping centre and is the principal retail town in Surrey and South West London. Major retailers represented in Kingston upon Thames include John Lewis, Marks & Spencer, Bentalls and British Home Stores.

Crown Arcade is located in the centre of the town between The Eden Walk Shopping Centre and the historic Market Place.

Description: Unit E is located at the entrance into Crown Arcade in Crown Passage and has frontages to the Arcade itself and to Crown Passage. There is a single WC and air-conditioning.

Accommodation: Unit E has an approximate net internal retail area of 331 sq ft (30.75 sq m).

Rating Assessment: The unit has rateable value of £16,500.00 with an approximate amount of rates payable for the year from April 2011 of £7,144.50. This is the full amount payable and takes no account of any small business rate or other reliefs that might apply. Interested parties should verify this information with the Royal Borough of Kingston upon Thames on 020 8547 5757.

Terms: Unit E is available to let on a new full repairing and insuring lease for a term by agreement.

Rent: £14,000.00 per annum exclusive.

Legal Costs: Both parties' legal costs are to be borne by the ingoing tenant.

Viewing: Strictly by appointment with joint sole agents.

**Andrew Pollard
BONSORS.COM
020 8546 0022**

PLEASE NOTE THE FOLLOWING:-

- 1) All measurements, areas and distances are approximate
- 2) Any rent or price quoted is exclusive of VAT where applicable
- 3) Rates information is believed to be correct but interested parties should check with rating authority.