

THE DESIGN, DRAWINGS, SPECIFICATIONS, AND ALL OTHER DOCUMENTS PREPARED BY THE ARCHITECT ARE INSTRUMENTS OF THE ARCHITECT'S SERVICE, AND ARE AND SHALL REMAIN THE PROPERTY OF THE ARCHITECT. THE DESIGNS CONTAINED HEREIN ARE INTENDED FOR THE SPECIFIC LOCATION INDICATED AND ARE NOT TO BE USED IN OTHER LOCATIONS WITHOUT THE EXPRESS WRITTEN CONSENT OF THE ARCHITECT. THE ARCHITECT SHALL BE DEEMED THE AUTHOR OF THESE DOCUMENTS AND RETAINS ALL COMMON LAW, STATUTORY, AND OTHER RESERVE RIGHTS, INCLUDING COPYRIGHT.

IT IS A VIOLATION OF THE LAW FOR ANY PERSON UNLESS ACTING UNDER THE DIRECTION OF A LICENSED ARCHITECT, TO ALTER DOCUMENTS BEARING AN ARCHITECTURAL SEAL IN ANY WAY. IF ANY ITEM BEARING THE SEAL OF AN ARCHITECT IS ALTERED THE ALTERING ARCHITECT SHALL AFFIX SEAL TO THE ITEM ALONG WITH THE NOTATION "ALTERED BY" FOLLOWED BY HIS SIGNATURE AND THE DATE OF SUCH ALTERATION AND NOTE THE SPECIFIC DESCRIPTION OF THE ALTERATION. (AS PER THE NEW YORK STATE EDUCATION LAW ARTICLE 147-ARCHITECTURE, SECTION 7307)

NOTES:

1	8/02/2024	
NO.	DATE:	DESCRIPTION:
ISSUANCE:		

**SANDERS EQUITIES**  
 NEW YORK OFFICE  
 301 NORTH BROADWAY SUITE 200  
 JERICHO, NY 11753  
 CONNECTICUT OFFICE  
 88 ARCH STREET  
 GREENWICH, CT. 06830

Copyright ©2024 SANDERS EQUITIES L.L.C. All Rights Reserved.

SEAL:	PROJECT NORTH:

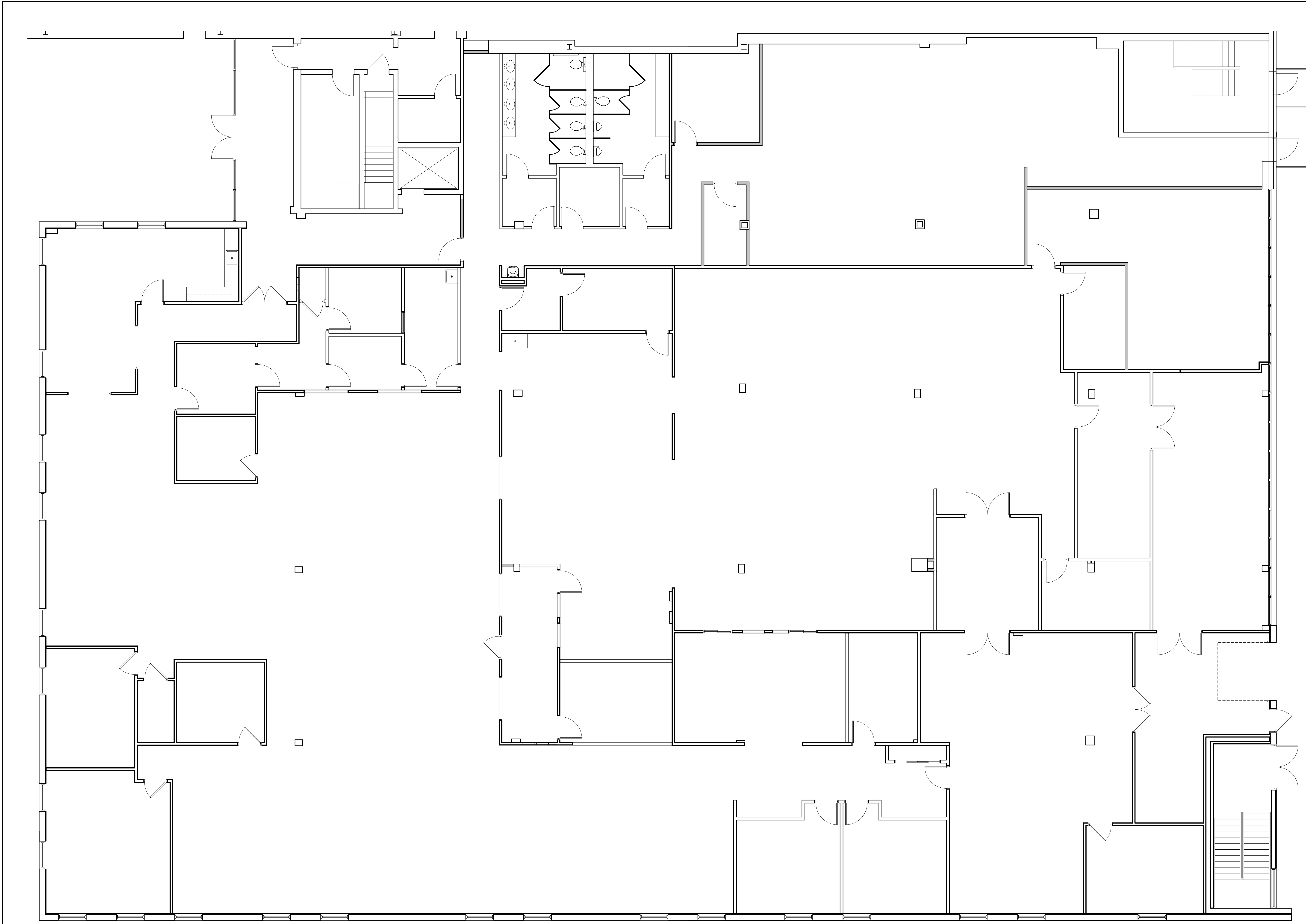
PROJECT TITLE:  
 DESCRIPTION: SUITE 204 BUILD-OUT

**EXISTING PLAN**

123 FROST STREET,  
 WESTBURY, NY 11590

DRAWING TITLE:  
 FLOOR PLAN

DRAWN BY: NCE	SHEET NO.
CHECKED BY: NCE	<b>EC-1</b>
DATE: 08.02.24	
SCALE: AS NOTED	





**EXISTING PLAN**  
 EC-1 N.T.S.